

10850684

10850684
12/02/2009 03:20 PM \$0.00
Book - 9785 Pg - 1034A
GARY W. OTT
RECORDER, SALT LAKE COUNTY, UTAH
LANDMARK TITLE
BY: ZJM, DEPUTY - WI ~~1P~~
2P

Name: NOTICE OF APPROVAL OF LOT
LINE ADJUSTMENT
QUARRY BEND
SUBDIVISION

Desc: 28-05-41,42

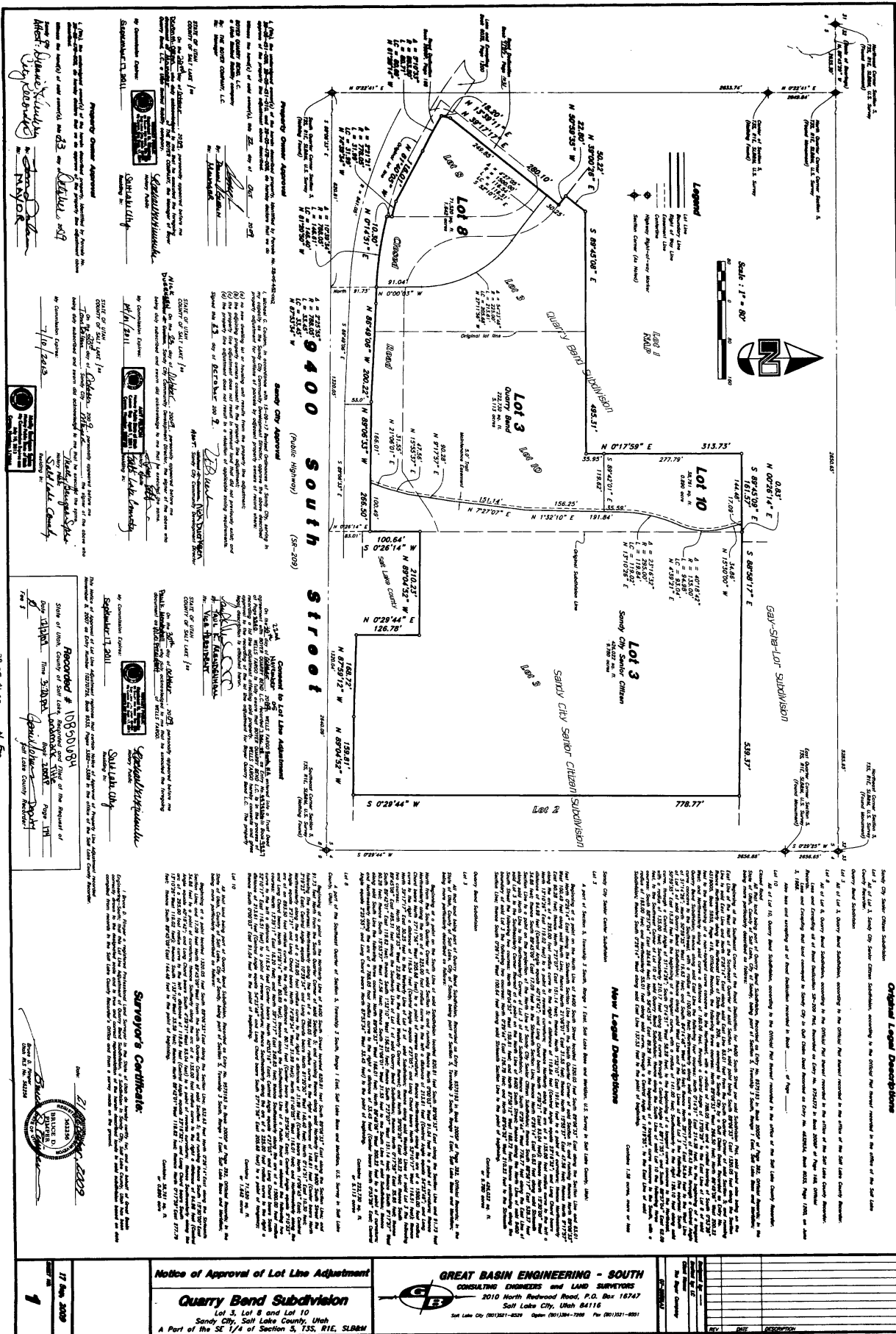
Fee: NO FEE

of Pages: ONE

PLAT

SEE ONLINE PLATS AT
[HTTP://REC.CO.SLC.UT.US](http://rec.co.slc.ut.us)

BK 9785 PG 1034



Property Owner Approval
 I, the undersigned, being the owner of the above described property, hereby approve the above described plat and the same being recorded in the public records of the State of Utah, and I authorize the undersigned to execute and record the same.

 [Signature]

 [Signature]

City Approval
 I, the undersigned, being the Mayor of the City of Sandy, Utah, hereby approve the above described plat and the same being recorded in the public records of the State of Utah, and I authorize the undersigned to execute and record the same.

 [Signature]

 [Signature]

County Approval
 I, the undersigned, being the County Clerk of Salt Lake County, Utah, hereby approve the above described plat and the same being recorded in the public records of the State of Utah, and I authorize the undersigned to execute and record the same.

 [Signature]

 [Signature]

Surveyor's Certificate
 I, the undersigned, being a Licensed Professional Surveyor in the State of Utah, hereby certify that the above described plat was prepared by me or under my direct supervision and that I am a duly Licensed Professional Surveyor in the State of Utah.

 [Signature]

 [Signature]

Notice of Approval of Lot Line Adjustment
Quarry Bend Subdivision
 Lot 3, Lot 6 and Lot 10
 Sandy City, Salt Lake County, Utah
 A Part of the SE 1/4 of Section 3, T35, R1E, S168N

Original Legal Descriptions

Lot 3 of the Quarry Bend Subdivision, according to the Official Plat thereof recorded in the office of the Salt Lake County Assessor, Salt Lake County, Utah, on the 12th day of October, 1978, in Book 118, Page 118, and the same being recorded in the office of the Salt Lake County Assessor, Salt Lake County, Utah, on the 12th day of October, 1978, in Book 118, Page 118, and the same being recorded in the office of the Salt Lake County Assessor, Salt Lake County, Utah, on the 12th day of October, 1978, in Book 118, Page 118.

Lot 6 of the Quarry Bend Subdivision, according to the Official Plat thereof recorded in the office of the Salt Lake County Assessor, Salt Lake County, Utah, on the 12th day of October, 1978, in Book 118, Page 118, and the same being recorded in the office of the Salt Lake County Assessor, Salt Lake County, Utah, on the 12th day of October, 1978, in Book 118, Page 118, and the same being recorded in the office of the Salt Lake County Assessor, Salt Lake County, Utah, on the 12th day of October, 1978, in Book 118, Page 118.

Lot 10 of the Quarry Bend Subdivision, according to the Official Plat thereof recorded in the office of the Salt Lake County Assessor, Salt Lake County, Utah, on the 12th day of October, 1978, in Book 118, Page 118, and the same being recorded in the office of the Salt Lake County Assessor, Salt Lake County, Utah, on the 12th day of October, 1978, in Book 118, Page 118, and the same being recorded in the office of the Salt Lake County Assessor, Salt Lake County, Utah, on the 12th day of October, 1978, in Book 118, Page 118.

New Legal Descriptions

Lot 3 of the Quarry Bend Subdivision, according to the Official Plat thereof recorded in the office of the Salt Lake County Assessor, Salt Lake County, Utah, on the 12th day of October, 1978, in Book 118, Page 118, and the same being recorded in the office of the Salt Lake County Assessor, Salt Lake County, Utah, on the 12th day of October, 1978, in Book 118, Page 118, and the same being recorded in the office of the Salt Lake County Assessor, Salt Lake County, Utah, on the 12th day of October, 1978, in Book 118, Page 118.

Lot 6 of the Quarry Bend Subdivision, according to the Official Plat thereof recorded in the office of the Salt Lake County Assessor, Salt Lake County, Utah, on the 12th day of October, 1978, in Book 118, Page 118, and the same being recorded in the office of the Salt Lake County Assessor, Salt Lake County, Utah, on the 12th day of October, 1978, in Book 118, Page 118, and the same being recorded in the office of the Salt Lake County Assessor, Salt Lake County, Utah, on the 12th day of October, 1978, in Book 118, Page 118.

Lot 10 of the Quarry Bend Subdivision, according to the Official Plat thereof recorded in the office of the Salt Lake County Assessor, Salt Lake County, Utah, on the 12th day of October, 1978, in Book 118, Page 118, and the same being recorded in the office of the Salt Lake County Assessor, Salt Lake County, Utah, on the 12th day of October, 1978, in Book 118, Page 118, and the same being recorded in the office of the Salt Lake County Assessor, Salt Lake County, Utah, on the 12th day of October, 1978, in Book 118, Page 118.