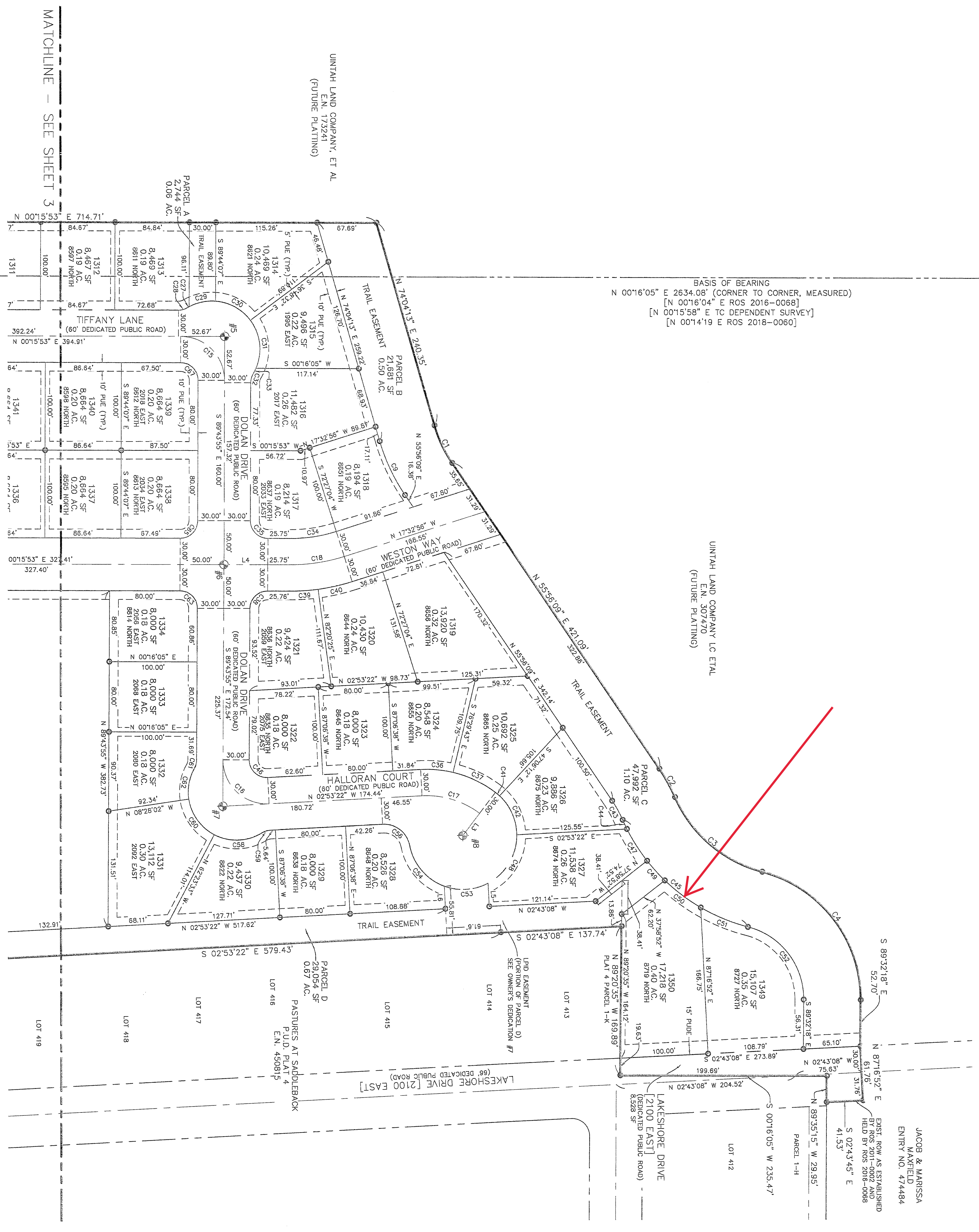


PASTURES AT SADDLEBACK P.U.D. PLAT 13
 A SUBDIVISION LOCATED IN THE SOUTHEAST QUARTER OF SECTION 35 AND THE SOUTHWEST QUARTER OF SECTION 36,
 TOWNSHIP 1 SOUTH, RANGE 4 WEST, SALT LAKE BASE AND MERIDIAN, LAKE POINT, TOOELE COUNTY, UTAH

WEST QUARTER CORNER SECTION 36,
 TOWNSHIP 1 SOUTH, RANGE 4 WEST,
 SALT LAKE BASE & MERIDIAN
 FOUND TOOELE COUNTY DEPENDENT
 RESURVEY MONUMENT
 (BRASS MONUMENT STAMPED 1983)

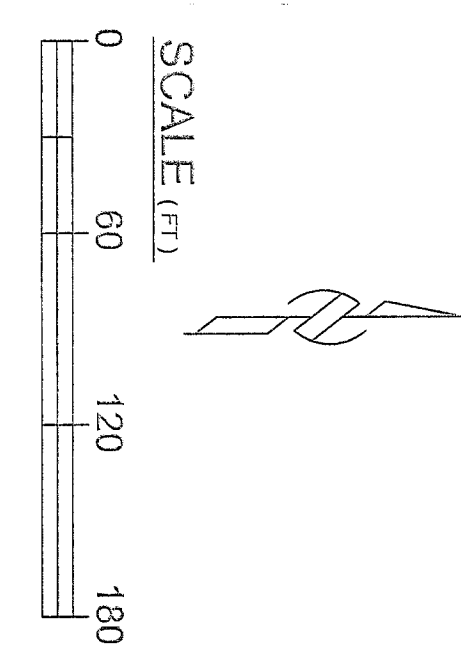
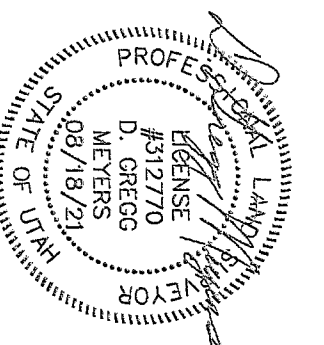


Line #	Direction	Length
L1	N 89°44'07" W	30.00'
L2	N 00°15'53" E	31.70'
L3	S 92°48'47" E	31.50'
L4	N 00°15'53" E	90.00'
L5	S 87°08'38" W	28.63'
L6	N 87°08'38" E	25.81'

STREET MON. #	Direction	Length	STREET MON. #
#1	N 64°31'15" W	280.00'	#2
#2	N 21°18'10" E	447.11'	#3
#3	S 89°44'47" E	260.00'	#4
#4	N 00°15'53" E	494.92'	#5
#5	N 00°15'53" E	494.92'	#6
#6	S 76°12'18" E	312.30'	#7
#7	S 89°43'55" E	280.00'	#8
#8	N 07°03'22" E	275.51'	#9
#9	N 64°35'48" E	359.00'	#10

LEGEND

- ALL SECTION CORNERS ARE TOOELE COUNTY DEPENDANT RESURVEY MONUMENTS (TO BE SET OR AS NOTED)
- EXISTING STREET MONUMENT
- SET REBAR 3/8"x24" W/ CAP STAMPED "BENINGHAM ENG."
- RIGHT-OF-WAY DEDICATION BOUNDARY LINE
- SECTION LINE
- SUBDIVISION BOUNDARY LINE
- LOT LINE
- (60') PUBLIC UTILITY EASEMENT
- PIE ALONG ALL FRONT AND CORNER LOT EXTERIOR SIDE YARDS 5' ALL INTERIOR SIDE YARDS 10' ALL REAR YARDS UNLESS OTHERWISE SPECIFIED.
- ADJOINING LOT LINES
- CENTERLINE



PASTURES AT SADDLEBACK P.U.D. PLAT 13
 A SUBDIVISION LOCATED IN THE SOUTHEAST QUARTER OF SECTION 36, TOWNSHIP 1 SOUTH, RANGE 4 WEST,
 SALT LAKE BASE AND MERIDIAN, LAKE POINT, TOOELE COUNTY, UTAH

RECORDED ENTRY NO. 5144379
 State of Utah, County of Tooele
 Recorded and Filed at the request of Christopher Robinson
 Date: 11/02/22 Time: 2:34 pm
 Robert W. Mays
 Tooele County Recorder

BENINGHAM ENGINEERING
 200 West 1000 South, Suite 100
 Salt Lake City, UT 84119
 (801) 525-2500
 www.beningham.com

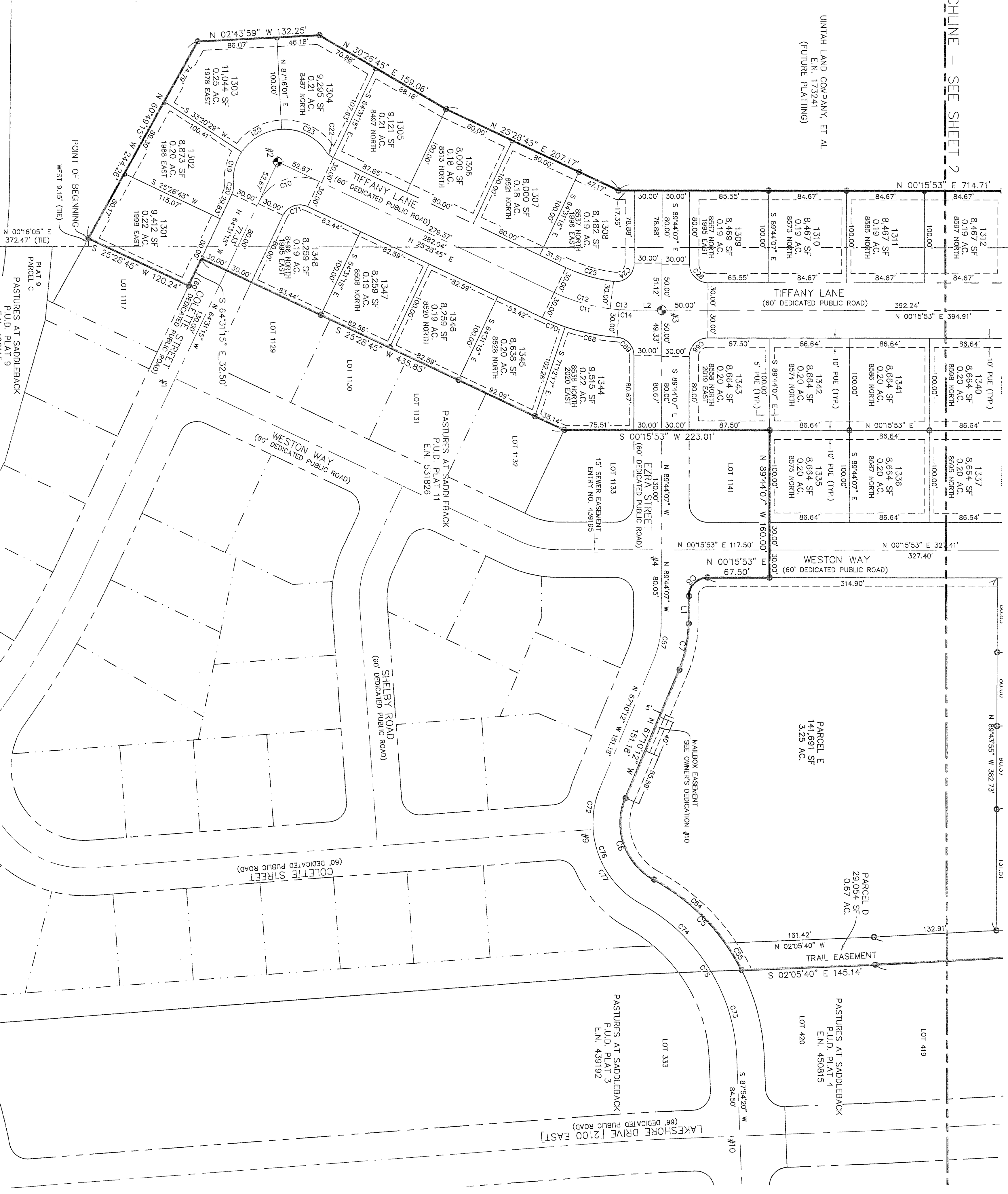
Design: JLS
 Drawn: JLS
 Checked: GML
 Reviewed: JRL

SOUTHWEST CORNER OF SECTION 36,
 TOWNSHIP 1 SOUTH, RANGE 4 WEST,
 TOOELE COUNTY DEPENDANT RESURVEY,
 ESTABLISHED FROM WITNESS CORNER.

WEST QUARTER CORNER SECTION 36, TOWNSHIP 1 SOUTH, RANGE 4 WEST, SALT LAKE BASE AND MERIDIAN FOUND TOOLEE COUNTY DEPENDENT RESERVE MONUMENT

PASTURES AT SADDLEBACK P.U.D. PLAT 13
A SUBDIVISION LOCATED IN THE SOUTHEAST QUARTER OF SECTION 35 AND THE SOUTHWEST QUARTER OF SECTION 36, TOWNSHIP 1 SOUTH, RANGE 4 WEST, SALT LAKE BASE AND MERIDIAN, LAKE POINT, TOOLEE COUNTY, UTAH

MATCHLINE - SEE SHEET 2

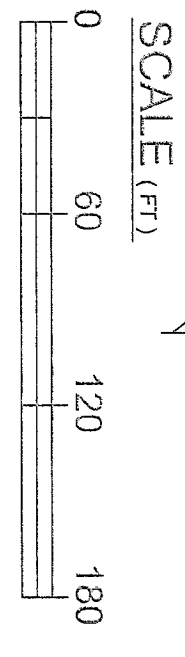
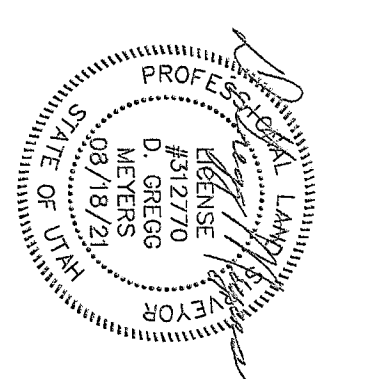


Curve #	Length	Radius	Chord Length	Chord Direction
C1	47.46'	180.00'	180.0005"	E 47.28'
C2	37.00'	200.00'	100.9566"	N 69.0012° E
C3	135.65'	150.00'	51.4644'	N 61.4407° E
C4	182.29'	150.00'	79.9424'	N 40.5742° E
C5	138.67'	230.00'	34.3539'	N 52.5530° E
C6	102.66'	70.00'	64.0305'	S 70.4816° W
C7	61.20'	150.00'	22.5356'	N 78.2710° W
C8	31.42'	200.00'	90.0000'	N 44.4407° W
C9	84.65'	215.00'	180.9044'	N 63.0011° E
C10	78.54'	50.00'	90.0000'	S 19.3118° E
C11	73.37'	200.00'	210.1033'	N 14.5813° E
C12	83.56'	200.00'	181.2320'	N 16.2230° E
C13	24.46'	200.00'	70.0222'	N 03.9603° E
C14	14.65'	200.00'	41.1482'	N 02.2147° E
C15	78.54'	50.00'	90.0013'	S 49.1599° W
C16	81.30'	100.00'	93.9927'	N 43.4122° E
C17	68.95'	100.00'	40.0435'	S 17.0856° W
C18	62.16'	200.00'	174.6448'	N 08.9832° W
C19	36.79'	55.00'	38.9144'	S 79.4822° E
C20	10.63'	20.00'	30.2758'	N 79.1491° W
C21	51.76'	55.00'	53.9530'	S 29.4145° E
C22	10.63'	20.00'	30.2758'	N 40.4244° E
C23	56.32'	55.00'	59.6042'	S 28.5822° W
C24	33.68'	20.00'	97.0022'	N 41.5157° W
C25	54.03'	170.00'	181.2320'	N 16.2230° E
C26	31.42'	20.00'	90.0000'	N 49.1933° E
C27	2.32'	95.00'	22.4955'	S 28.9932° E
C28	10.63'	20.00'	30.2752'	N 14.5804° W
C29	31.07'	55.00'	32.2148'	S 11.9810° E
C30	46.66'	55.00'	48.9544'	S 28.5308° W
C31	57.45'	55.00'	60.6155'	S 83.1916° W
C32	10.63'	20.00'	30.2752'	S 74.9298° E
C33	6.99'	55.00'	7.1655'	N 62.5430° W
C34	52.25'	170.00'	174.6448'	N 08.9832° W
C35	31.42'	20.00'	90.0013'	N 49.1599° E
C36	37.20'	130.00'	187.3399'	S 05.1828° W
C37	53.73'	130.00'	234.0586'	S 29.2048° W
C38	31.41'	20.00'	89.9947'	S 44.4407° E
C39	31.81'	230.00'	7.9528'	N 03.9151° W
C40	39.70'	230.00'	9.9523'	N 12.2816° W

Curve #	Length	Delta	Chord Length	Chord Direction
C41	6.13'	81.50'	54.2525'	S 40.0231° W
C42	48.87'	61.50'	46.2792'	48.52'
C43	24.87'	135.00'	103.5956'	S 4.9447° W
C44	11.30'	215.00'	3.0220'	N 63.0110° E
C45	184.43'	215.00'	51.8437'	N 18.8742° E
C46	32.52'	20.00'	93.9927'	N 43.4122° E
C47	43.08'	215.00'	11.2841'	N 57.4531° E
C48	67.38'	61.50'	62.4631'	N 59.1504° W
C49	30.10'	215.00'	8.0115'	N 48.0017° E
C50	61.63'	215.00'	13.4232'	S 1.5151° W
C51	58.23'	215.00'	15.3102'	N 22.2897° E
C52	112.36'	86.00'	76.4424'	N 104.36°
C53	51.50'	61.50'	47.9542'	N 03.9227° W
C54	63.54'	61.50'	59.1150'	N 48.4248° E
C55	34.27'	230.00'	8.3210'	S 58.0817° W
C56	43.04'	30.00'	82.1206'	S 38.1241° W
C57	38.38'	100.00'	22.5356'	N 78.2710° W
C58	57.08'	55.00'	59.2820'	S 45.53°
C59	10.10'	20.00'	29.9537'	N 02.0848° W
C60	51.76'	55.00'	53.9532'	N 54.5412° E
C61	10.10'	20.00'	29.9537'	N 75.1538° W
C62	36.17'	55.00'	37.4044'	S 35.52°
C63	31.42'	20.00'	90.0013'	S 45.1599° W
C64	104.60'	230.00'	26.0329'	N 103.70°
C65	31.41'	20.00'	89.9947'	N 44.4407° W
C66	31.42'	20.00'	90.0000'	S 44.4407° E
C67	31.42'	20.00'	90.0013'	S 45.1599° W
C68	57.54'	230.00'	14.2070'	S 7.39°
C69	28.85'	20.00'	89.9911'	N 22.22°
C70	28.83'	230.00'	6.4102'	N 22.0814° E
C71	31.42'	20.00'	90.0000'	S 28.28°
C72	48.62'	100.00'	28.9433'	S 80.9128° E
C73	98.56'	200.00'	28.9119'	98.54°
C74	108.53'	200.00'	30.7615'	N 105.57°
C75	206.39'	200.00'	59.0737'	S 58.2032° W
C76	146.70'	100.00'	84.0305'	N 70.4816° E
C77	101.08'	101.00'	57.2932'	92.98°

LEGEND

- ALL SECTION CORNERS ARE TOOLEE COUNTY DEPENDANT RESERVE MONUMENTS UNLESS OTHERWISE NOTED (STREET MONUMENT TO BE SET ON AS NOTED)
- EXISTING STREET MONUMENT
- SET REBAR 5/8"x24" W/ CAP STAMPED "BINGHAM ENG."
- RIGHT-OF-WAY DEDICATION BOUNDARY LINE
- SECTION BOUNDARY LINE
- SUBDIVISION BOUNDARY LINE
- LOT LINE
- (PUE) PUBLIC UTILITY EASEMENT
- 10' PUE ALONG ALL FRONT AND CORNER LOT EXTERIOR SIDE YARDS, 5' ALL INTERIOR SIDE YARDS, 10' ALL REAR YARDS UNLESS OTHERWISE SPECIFIED.
- ADJOINING LOT LINES
- CENTERLINE



PASTURES AT SADDLEBACK P.U.D. PLAT 13
A SUBDIVISION LOCATED IN THE SOUTHEAST QUARTER OF SECTION 35 AND THE SOUTHWEST QUARTER OF SECTION 36, TOWNSHIP 1 SOUTH, RANGE 4 WEST, SALT LAKE BASE AND MERIDIAN, LAKE POINT, TOOLEE COUNTY, UTAH

RECORDED ENTRY NO. 51443719
State of Utah County of Toolee
Recorded and Filed at the request of: **Christophe Robinson**
Date: **1/6/2022** Time: **2:31pm**
Kristin A. Lynn, Deputy Toolee County Recorder

This map is provided solely for the purpose of assisting in locating the property and Cottonwood Title Insurance Agency, Inc. assumes no liability for variation, if any, with any actual survey.

BINGHAM ENGINEERING
DESIGN: JLS
DRAWN: JLS
CHECKED: GML
DATE: 1/10/2022
PROJECT: BK 22 PG 1

FOUND W.C. TCS 2.5" BRASS MONUMENT 1985 DEPENDENT RESERVE (STAMPED 1983)
SOUTHWEST CORNER OF SECTION 36, TOWNSHIP 1 SOUTH, RANGE 4 WEST, SALT LAKE BASE AND MERIDIAN, TOOLEE COUNTY DEPENDANT RESERVE, ESTABLISHED FROM WITNESS CORNER.
FOUND RE-ESTABLISHED W.C. TCS 3" BRASS MONUMENT YEAR NOT STAMPED, BELIEVED TO BE 2010 (ROS 2012-0027-01) S17.2517E 9.19' FROM PREVIOUS SET W.C. (THE TO 1984 WD)