

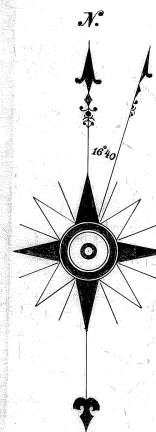
Plat of **CENTRAL PARK,**

A SUBDIVISION OF
Lots, 1, 2, 3 and 16, Block 41.

10 Acre Plat A.

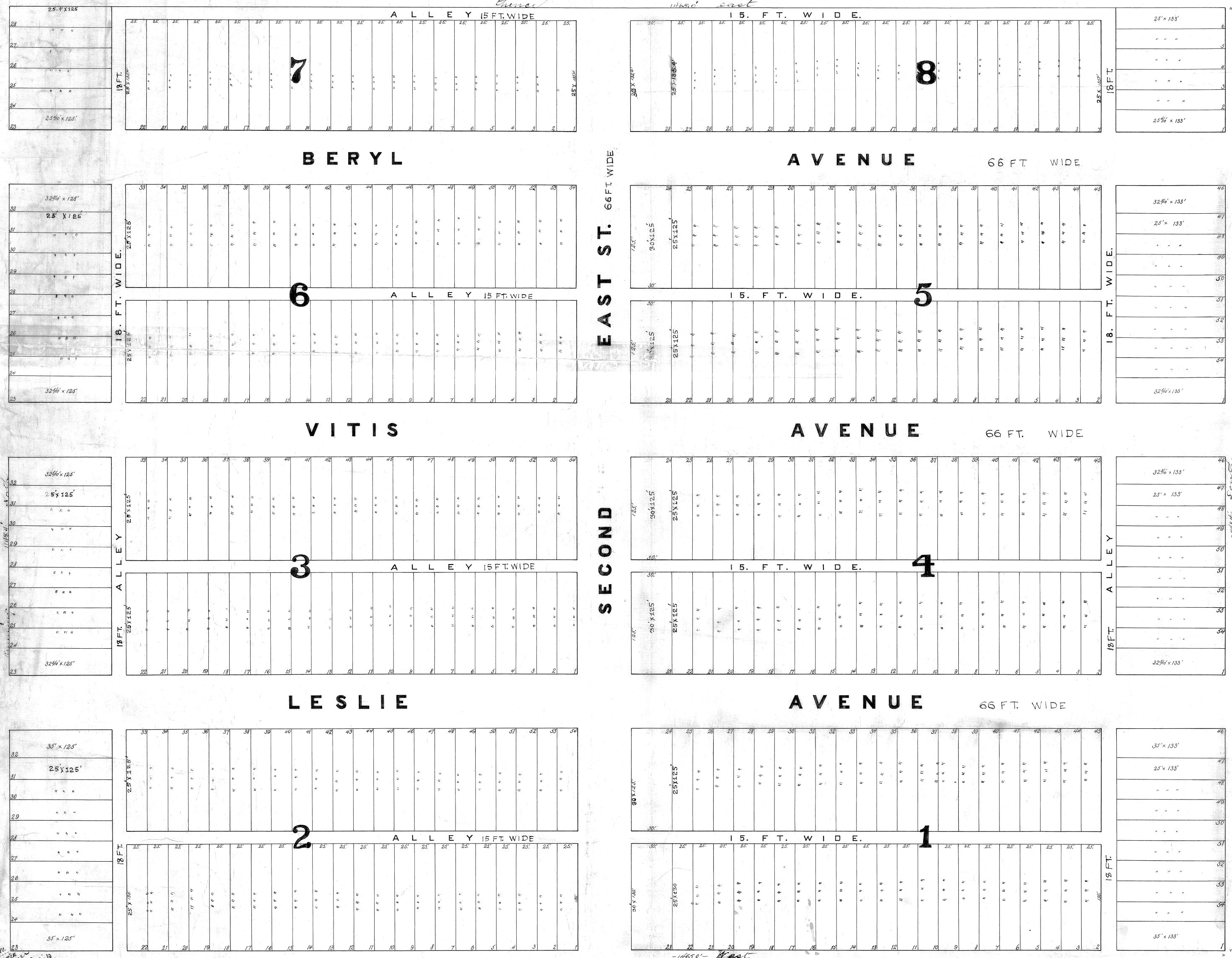
Scale, 50 Ft. to 1 Inch.

*Streets 66 feet wide.
Dimensions of all lots not otherwise
marked, 25' x 125'.*



FIRST EAST ST. OR STATE ROAD 132 FT. WIDE.

13th SOUTH ST. OR COUNTY ROAD



THIRD EAST ST. OR COUNTY ROAD

B 155

B 122

B-155

Notes:
1. All lots are to be improved with sidewalks and curbs.
2. All lots are to be improved with water and sewer lines.
3. All lots are to be improved with gas lines.
4. All lots are to be improved with electric lines.
5. All lots are to be improved with telephone lines.
6. All lots are to be improved with fire hydrants.
7. All lots are to be improved with street lighting.
8. All lots are to be improved with street cleaning.
9. All lots are to be improved with street maintenance.
10. All lots are to be improved with street parking.

8120

B-155

I Lafayette G. Reardon a Civil Engineer and Surveyor residing in Salt Lake City Utah Territory, do hereby certify that the accompanying map entitled "Plat of Central Park a subdivision of Lots 1, 2, 3, & 16 of Block 41 New Ace Plat A," is correctly made from a survey of mine marking and staking out said subdivision and correctly shows its connection by course and distance with the section corner common to Sections 19, 24, 25, & 30 Township 1 South Range 1 East 2d 1 West Salt Lake Meridian; and particularly sets forth and describes all the parcels of ground laid out, and platted by their boundaries course and extent, and all the portions dedicated to Streets, Roads, Alleys, and other public uses.

I further certify that to the best of my knowledge and belief the above mentioned Plat correctly, and in all respects complies with an act of the Territorial Legislature of Utah, entitled "A bill concerning the laying out and platting of cities and towns" and approved March 13th 1870; and that any person familiar with the reading of maps will have no difficulty in understanding the full meaning and intent of all figures, words, signs, and symbols used on said plat.

Lafayette G. Reardon
Civil Engineer

Salt Lake City, April 22nd 1890

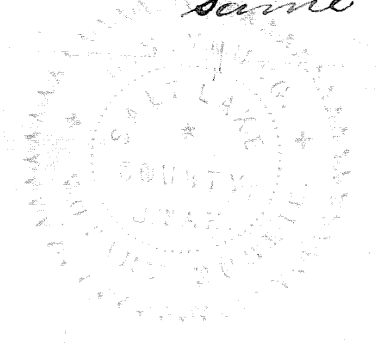
Know all men by these presents that I
Elias A. Smith owner of Central Park a sub-
division of Salt Lake City, County of Salt Lake,
Territory of Utah do hereby dedicate forever for
the use of the Public, all streets & alleys
in said Central Park.

Witness my hand
Elias A. Smith

Elias A. Smith

Territory of Utah }
County of Salt Lake }

On this twenty second day of April
A.D. 1890 personally appeared before me
H. S. Young Notary Public in and for
Salt Lake County Utah Territory, the signor
of the above instrument who duly ack-
nowledged to me that he executed the
same



H. S. Young
Notary Public Salt Lake
County Utah Territory
my Commission expires
October 10th 1891

Approved April 22nd 1890.
A. W. Bartch,
Probate Judge.

22322.

Filed April 23rd 1890 at 10 a.m.
George McCannon
Recorder Salt Lake County, Utah.

B-155