

VICINITY MAP N.T.S.

Trail Easement Line Table and Trail Easement Curve Table

ADDRESS BLOCK

Address block listing units 1 through 25.

FEMA NOTES

- Zone A, B, and C flood zone information.

GENERAL NOTES

- General notes regarding utility easements and parking.

ROCKY MOUNTAIN POWER

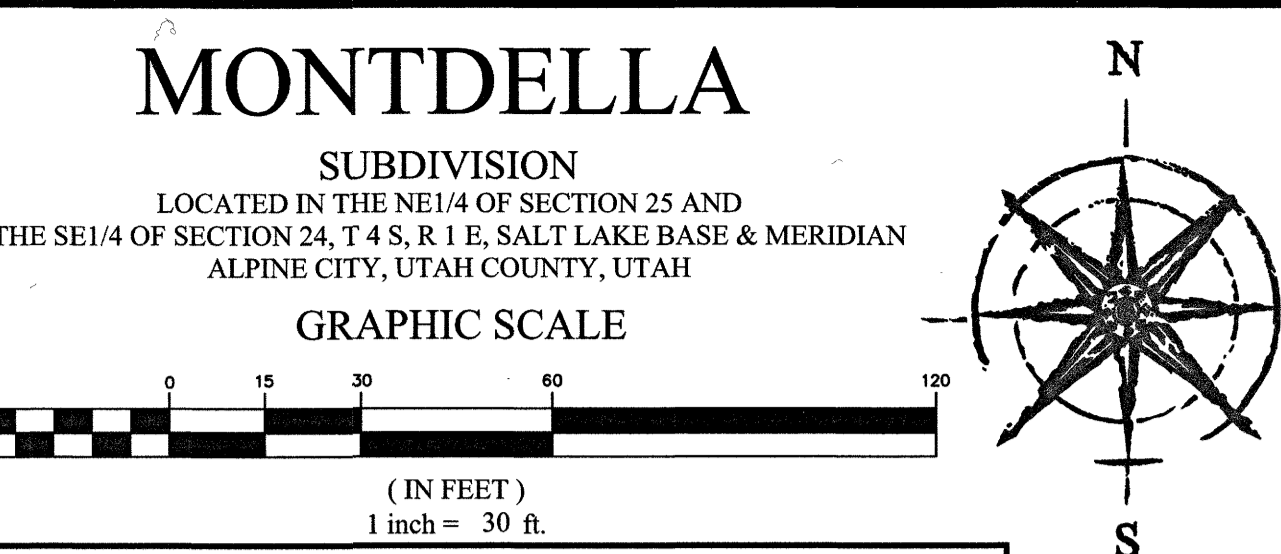
1. PURSUANT TO UTAH CODE ANN. 54-3-27 THIS PLAT CONVEYS TO THE OWNER(S) OR OPERATORS OF UTILITY FACILITIES A PUBLIC UTILITY EASEMENT ALONG WITH ALL THE RIGHTS AND DUTIES DESCRIBED THEREIN.

APPROVED THIS 16 DAY OF January 2020

BY: Jon Walker, ROCKY MOUNTAIN POWER

02.002.078 BROADSTONE LLC ENTRY No. 89737-2015

POINT OF BEGINNING N88°14'00"W 28.89



AREA TABULATIONS

Area tabulations table with columns: OPEN SPACE AREA, BUILDING PAD/DRIVEWAY AREA, ROW AREA, TOTAL AREA.

Line Table and Curve Table with columns for LINE, DIRECTION, LENGTH, CURVE, RADIUS, DELTA, LENGTH, CHORD DIRECTION, CHORD LENGTH.

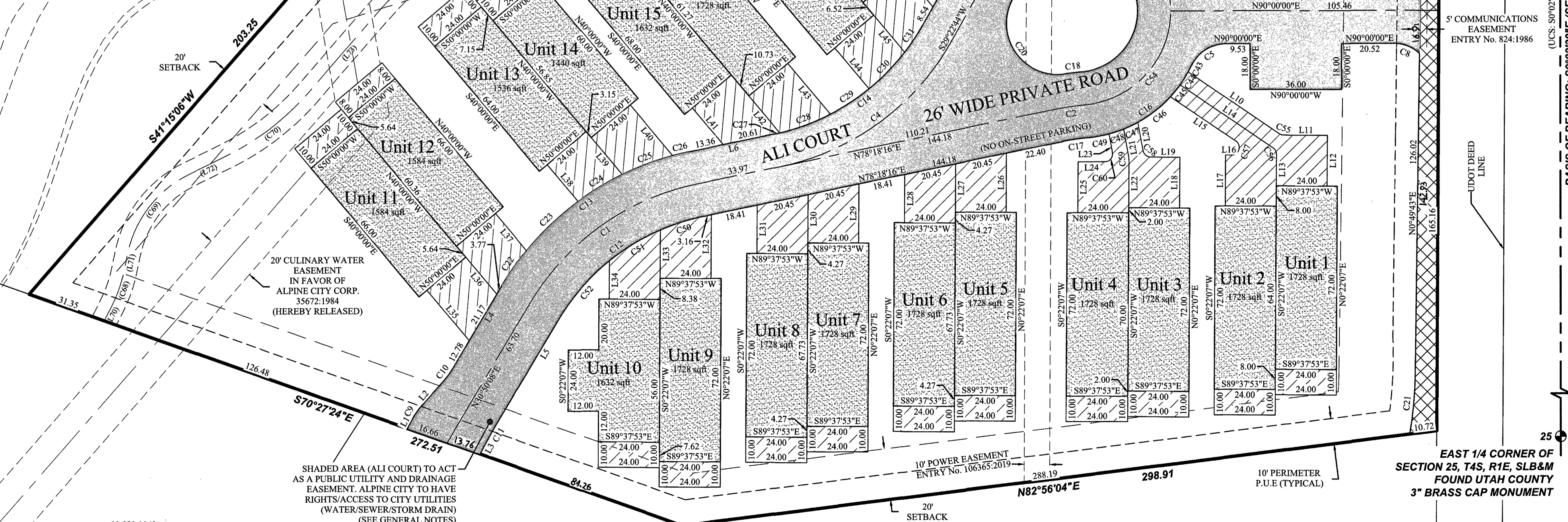
NORTH 1/4 CORNER OF SECTION 25, T4S, R1E, SLB8M FOUND UTAH COUNTY 3" BRASS CAP MONUMENT



LEGEND: PRIVATE OWNERSHIP, LIMITED COMMON AREA, COMMON AREA, ALL COURT SHADED AREA (SEE NOTE).

11-023-0035 JEFFREY M. & KRISTI COLLINS ENTRY NO. 73344-2016

11-023-0190 BRIG G. & MACKENZIE ARNOLD ENTRY NO. 74046-2016



11-023-0042 160 W CANYON CREST ROAD LLC ENTRY NO. 6905-2014

PLAT "A" 4TH AMENDMENT ALPINE MAIN STREET VILLAGE 57666.2016 MAP #15114

OWNER'S DEDICATION

KNOW ALL MEN BY THESE PRESENT THAT WE, ALL OF THE UNDERSIGNED OWNERS OF ALL OF THE PROPERTY DESCRIBED IN THE SURVEYOR'S CERTIFICATE HEREON AND SHOWN ON THIS MAP, HAVE CAUSED THE SAME TO BE SUBDIVIDED INTO LOTS, STREETS AND EASEMENTS AND DO HEREBY DEDICATE ANY PUBLIC STREETS AND OTHER PUBLIC AREAS AS INDICATED HEREON FOR PERPETUAL USE OF THE PUBLIC.

Manager Alan Cottle

STATE OF UTAH S.S. COUNTY OF Davis

LIMITED LIABILITY ACKNOWLEDGMENT

ON THE 16th DAY OF January A.D. 2020 PERSONALLY APPEARED BEFORE ME, THE UNDERSIGNED NOTARY PUBLIC, IN AND FOR THE COUNTY OF Davis...

My Commission Expires 07-27-2022

APPROVED BY MAYOR: Thomas J. Smith

ATTEST: CITY RECORDER

PLANNING COMMISSION APPROVAL

APPROVED THIS 7 DAY OF May, A.D. 2019 BY THE ALPINE CITY PLANNING COMMISSION.

APPROVED AS TO FORM THIS 17th DAY OF Feb

CITY ATTORNEY: [Signature]

ACCEPTANCE BY LEGISLATIVE BODY

THE CITY COUNCIL OF ALPINE CITY, COUNTY OF UTAH, APPROVES THIS SUBDIVISION AND HEREBY ACCEPTS THE DEDICATION OF ALL STREETS, EASEMENTS AND OTHER PARCELS OF LAND INTENDED FOR PUBLIC PURPOSES FOR THE PERPETUAL USE OF THE PUBLIC THIS 14 DAY OF May, A.D. 2019.

APPROVED BY MAYOR: Thomas J. Smith

ATTEST: CITY RECORDER

APPROVAL AS TO FORM

APPROVED AS TO FORM THIS 17th DAY OF Feb

CITY ATTORNEY: [Signature]

MONTDELLA SUBDIVISION

LOCATED IN THE NE1/4 OF SECTION 25 AND THE SE1/4 OF SECTION 24, T 4 S, R 1 E, SALT LAKE BASE & MERIDIAN ALPINE CITY, UTAH COUNTY, UTAH

16958 HOMEOWNERS ASSOCIATION

MONTELLA HOMEOWNERS ASSOCIATION 801 NORTH 500 WEST #103 BOUNTIFUL, UTAH 84010

FOCUS ENGINEERING AND SURVEYING, LLC 6949 SOUTH HIGH TECH DRIVE SUITE 300 MIDVALE, UT 84047 PH: (801) 352-0075 www.focusutah.com

16958

16958

16958

16958

16958

16958

16958

16958

16958

16958

16958

16958

16958

16958

16958

16958

16958

16958

16958

16958

16958

16958

16958

16958

16958

16958

16958

16958

16958

16958

16958

16958

16958