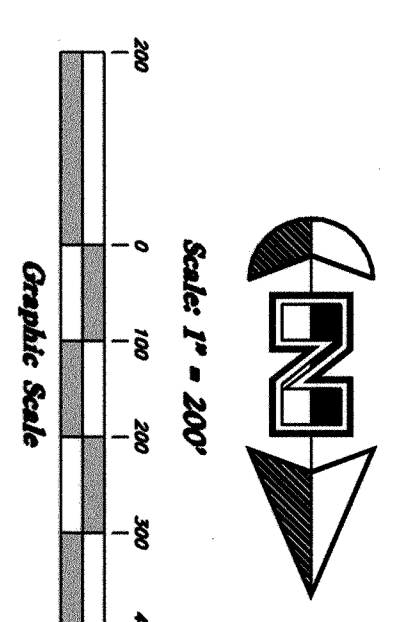
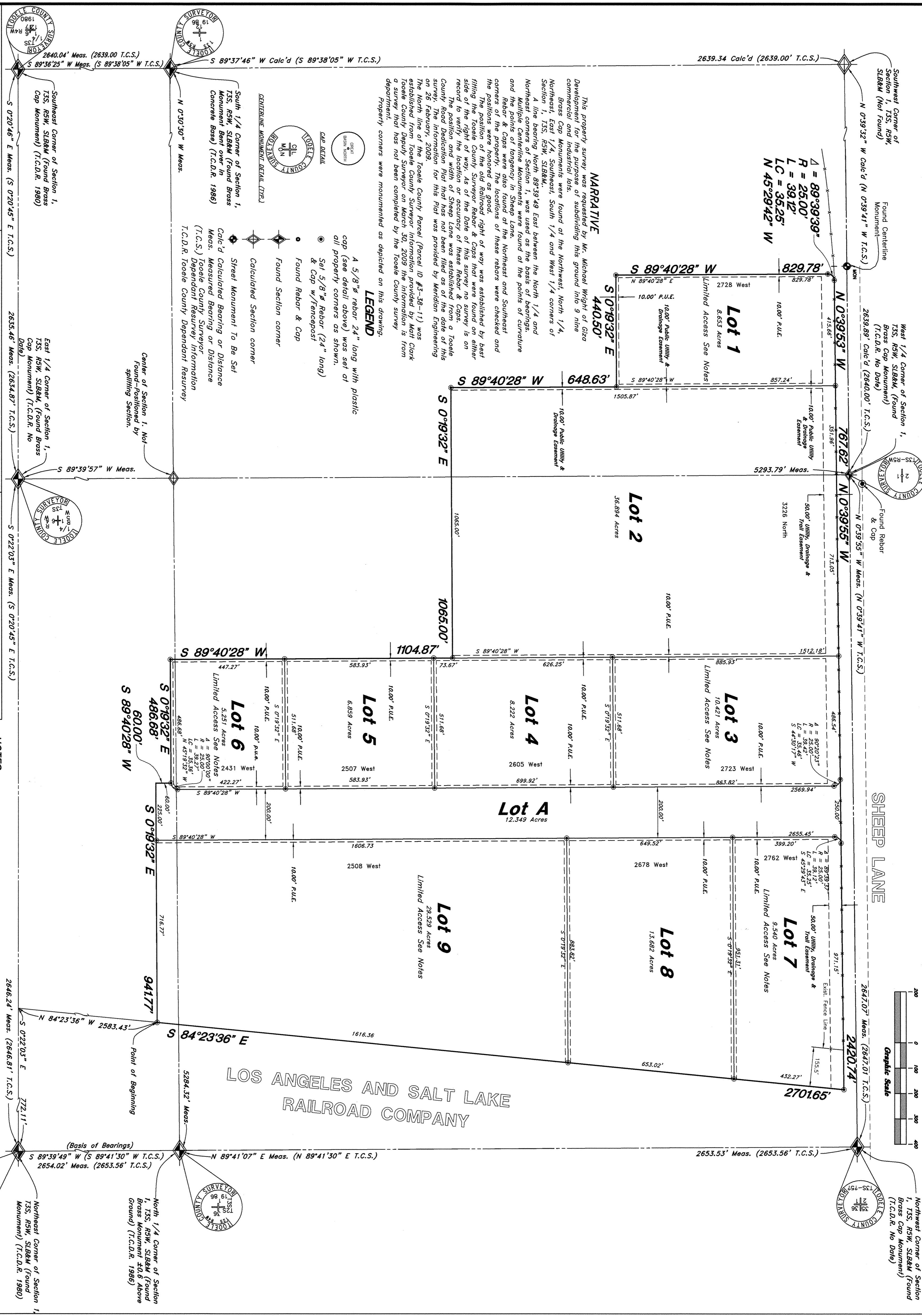


MILLER MOTORSPORTS BUSINESS PARK PUD No. 1

A part of Section 1 Township 3 South, Range 5 West, Salt Lake Base and Meridian, Tooele County, Utah



NARRATIVE

This property survey was requested by Mr. Michael Wright of Giza Development for the purpose of subdividing this ground into 9 nine acre lots. Brass Cap Monuments were found at the Northwest, North 1/4, Northeast, East 1/4, Southeast, South 1/4 and West 1/4 corners of Section 1, T3S, R5W, S18&M.

A line bearing North 89°39'49" East between the North 1/4 and Northeast corners of Section 1, was used as the basis of bearings. The positions were also found of the Northeast and Southeast corners of the property. The locations of these rabors were checked and the positions were located as good.

Right of way was established by left fitting the Tooele County Surveyor's Rabor & Caps that were found on either side of the right of way. As of the date of this survey no survey is on record to verify the location or accuracy of these Rabor & Caps.

The position and width of Sheep Lane was established from a Tooele County Road Dedication for this Plt was provided as a condition of this on 26 February, 2009.

The North line of the Tooele County Parcel (Parcel ID #3-38-11) was established from Tooele County Surveyor Information provided by Matt Clark Tooele County Deputy Surveyor on March 30, 2009. The information is from a department that has not been completed by the Tooele County survey.

Property corners were monumented as depicted on this drawing.

LEGEND

- Found Rabor & Cap
- Found Section corner
- Calculated Section corner
- Street Monument To Be Set
- Calculated Bearing or Distance Meas. Measured Bearing or Distance (T.C.S.) Tooele County Surveyor (T.C.D.R.) Tooele County Dependent Resurveyer
- 5/8" rebar 24" long with plastic cap (see detail above) was set at all property corners as shown.
- 5/8" rebar (24" long) & Cap w/ Fencopost
- Found Rabor & Cap
- Found Section corner
- Calculated Section corner
- Street Monument To Be Set
- Calculated Bearing or Distance Meas. Measured Bearing or Distance (T.C.S.) Tooele County Surveyor (T.C.D.R.) Tooele County Dependent Resurveyer

DESERT PEAK SPECIAL SERVICE DISTRICT
Approved this 31 day of March, 2009.

TOOELE COUNTY ENGINEER
Approved this 15 day of April, 2009.

DESERT PEAK COMMERCIAL PROJECT AREA
Approved this 31 day of March, 2009.

TOOELE COUNTY PLANNING COMMISSION
Approved this 31 day of March, 2009.

TOOELE COUNTY SURVEYOR
Approved this 31 day of March, 2009.

NORTH TOOELE COUNTY FIRE DEPARTMENT
Approved this 31 day of March, 2009.

TOOELE COUNTY RECORDER
RECORDED NO. 324129

BOARD OF HEALTH
Approved this 31 day of March, 2009.

TOOELE COUNTY TREASURER
Approved this 31 day of March, 2009.

TOOELE COUNTY ATTORNEY
Approved this 31 day of March, 2009.

TOOELE COUNTY PLANNING COMMISSION
Approved this 31 day of March, 2009.

TOOELE COUNTY SURVEYOR
Approved this 31 day of March, 2009.

NORTH TOOELE COUNTY FIRE DEPARTMENT
Approved this 31 day of March, 2009.

TOOELE COUNTY RECORDER
RECORDED NO. 324129

SURVEYOR'S CERTIFICATE

I, Andy Hubbard, do hereby certify that I am a Professional Land Surveyor in the State of Utah, and that I hold Certification No. 6242920 in accordance with Title 58, Chapter 22, of the Utah Code. I also certify that this plat of Miller Motorsports Business Park PUD No. 1 in Tooele County, Utah has been correctly drawn to the designated scale and is a true and correct representation of the following description of lands included in said subdivision, based on data compiled from records in the Tooele County Recorder's Office, and of a survey made on the ground in accordance with Section 17-23-17. Monuments have been set as depicted on this drawing.

Signed this 31st day of March, 2009.

Andy Hubbard
Professional Land Surveyor

OWNER'S DEDICATION

Know all men by these presents that the undersigned, the owners of the herein described tract of land have divided the same into lots and streets together with easements as set forth hereafter to be known as Miller Motorsports Business Park PUD No. 1. The undersigned owners hereby dedicate to Tooele County those certain strips of easements for utility drainage and recreational trail purposes as shown hereon, the same to be used for the installation, maintenance, and operation of utility lines, drainage, and recreational trails as may be authorized by Tooele County.

The undersigned owners also hereby convey to any and all public and private utility companies a perpetual, non-exclusive easement over the public utility easements shown on this plat, the same to be used for drainage and the installation, maintenance and operation of utility service lines and facilities.

Miller Motorsports Estate, LLC
Gregory S. Miller - Operating Manager
Tooele County Commission
Chairman
Caleb S. Johnson
Tooele County Clerk
Marlin K. Gilliffe - Tooele County Clerk

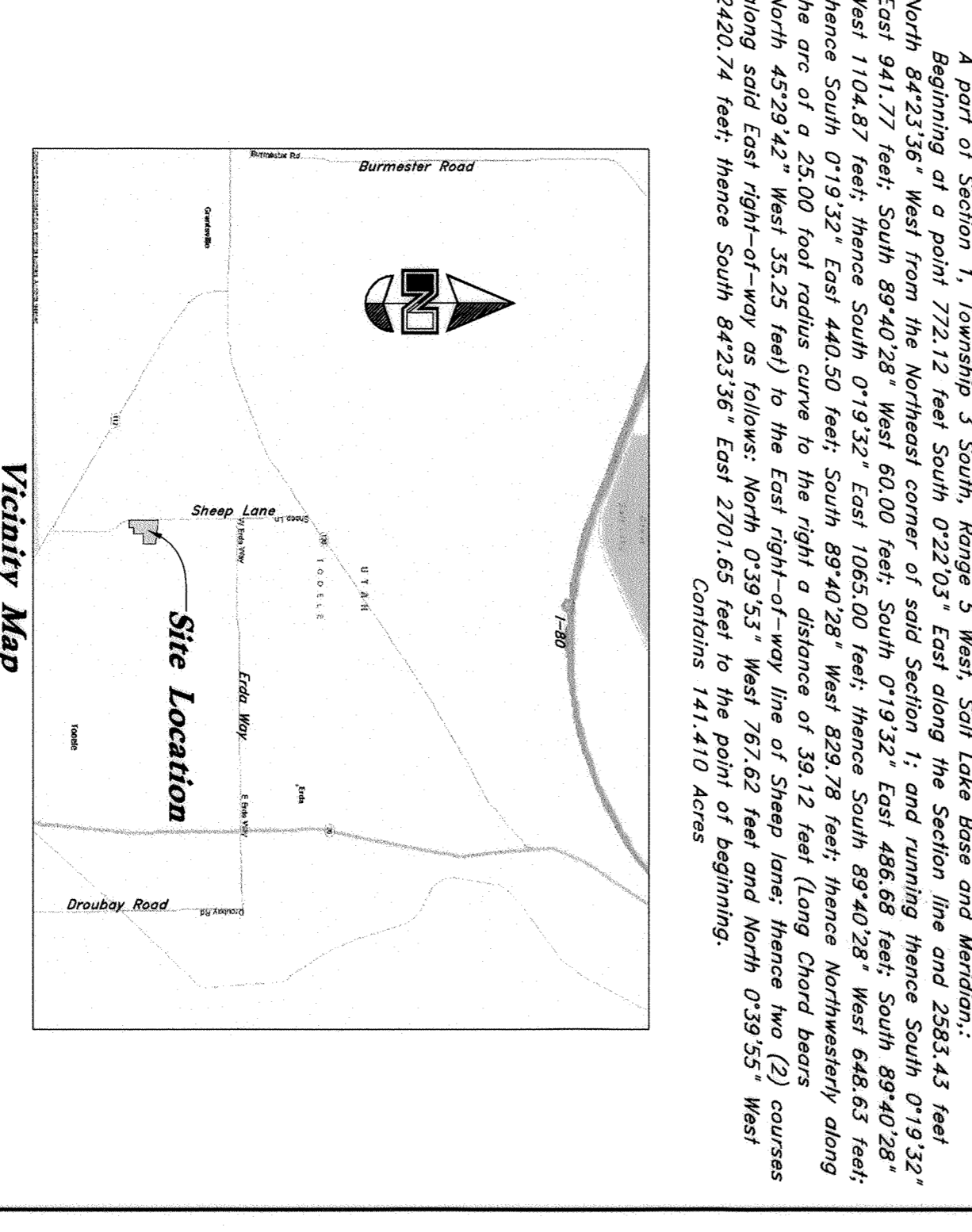
ACKNOWLEDGMENTS

State of Utah
County of Utah
City of Salt Lake
On the 31st day of March, 2009, personally appeared before me Gregory S. Miller, who being by me duly sworn did say that he is Operating Manager of the Miller Motorsports Estate, LLC and that said instrument was signed in behalf of said LLC by a resolution of its Members and Gregory S. Miller acknowledged to me that said LLC executed the same.

Residing At: Tooele County, Utah
A Notary Public Commissioned in Utah
Commission Expires: 09-15-2010
TAMARA A. WILSON
Notary

BOUNDARY DESCRIPTION

A part of Section 1, Township 3 South, Range 5 West, Salt Lake Base and Meridian, beginning at a point 772.12 feet South 0°22'03" East along the Section line and 2583.43 feet North 84°23'36" West from the Northeast corner of said Section 1; and running thence South 0°19'32" East 941.77 feet; South 89°40'28" West 60.00 feet; East 486.68 feet; South 89°40'28" West 1104.87 feet; thence South 0°19'32" East 440.50 feet; thence Northwesterly along the arc of a 25.00 foot radius curve to the right a distance of 33.12 feet (Long Chord bears North 45°29'42" West 35.25 feet) to the East right-of-way line of Sheep Lane; thence two (2) courses along said East right-of-way as follows: North 0°39'53" West 767.62 feet and North 0°39'53" West 2420.74 feet; thence South 84°23'36" East 2701.65 feet to the point of beginning. Contains 141,410 Acres.



Final Plat for Miller Motorsports Business Park PUD No. 1

A part of Section 1, Township 3 South, Range 5 West, Salt Lake Base and Meridian, Tooele County, Utah

GREAT BASIN ENGINEERING NORTH
5746 South 1500th Avenue, Suite 200
P.O. Box 150046, Ogden, Utah 84415
(801)244-4111 Fax (801)244-4222 Fax (801)244-7944

TOOELE COUNTY RECORDER
RECORDED NO. 324129
STATE OF UTAH, COUNTY OF TOOELE, RECORDED AND FILED AT THE OFFICE OF THE COUNTY CLERK, TOOELE COUNTY, UTAH, ON THIS 31st DAY OF MARCH, 2009.
FEE PAID \$ 37.00