

SALEM IRRIGATION & CANAL COMPANY EASEMENT

SALEM CANAL EASEMENT DESCRIPTION:
 BEGINNING AT A POINT LOCATED
 192.73 FEET EAST AND 382.81 FEET
 SOUTH FROM FOUND EAST QUARTER CORNER
 OF SECTION 9, TOWNSHIP 9 SOUTH,
 RANGE 2 EAST, SALT LAKE BASE AND
 MERIDIAN, AND THEN ALONG A 20 FEET
 WIDE EASEMENT, (10 FEET) EACH SIDE
 OF THE FOLLOWING DESCRIBED CENTERLINE

LINE	BEARING	LENGTH
L1	S33°40'52"E	99.66'
L2	N79°29'24"E	38.24'
L3	S10°37'27"E	157.19'
L4	S07°36'54"E	160.07'
L5	S07°39'39"E	432.62'
L6	S77°42'31"W	507.54'
L7	S77°38'14"W	630.39'
L8	S79°10'12"W	389.26'
L9	S75°35'06"W	144.85'
L10	S86°32'11"W	78.80'
L11	S07°33'11"E	144.31'
L12	S00°06'34"W	508.26'
L13	S12°00'38"W	79.80'
L14	S02°11'40"W	680.35'
L15	S02°38'55"E	612.63'
L16	S35°25'17"E	97.38'
L17	S34°10'17"E	101.83'
L18	S34°31'48"E	526.36'
L19	S28°14'46"E	22.41'
L20	S33°28'16"E	268.00'
L21	S32°10'04"E	251.26'
L22	S23°33'36"E	107.73'
L23	S11°08'23"E	28.06'
L24	S03°51'24"E	226.38'
L25	S06°44'38"E	169.62'

CHANGING TO A 30 FOOT WIDE CANAL
 EASEMENT, 15 FEET EACH SIDE OF
 THE FOLLOWING CONTINUED DESCRIBED
 CENTERLINE. THENCE AS FOLLOWS:

L26	S33°24'05"E	126.30'
L27	S53°06'36"E	29.68'
L28	S72°57'33"E	105.36'
L29	S77°15'58"E	143.75'
L30	S74°30'59"E	427.91'
L31	S80°13'32"E	100.24'
L32	S86°57'03"E	35.80'
L33	S81°25'26"E	49.31'
L34	N85°21'51"E	108.47'
L35	N78°53'27"E	276.35'
L36	N77°12'48"E	475.47'
L37	N77°57'10"E	80.73'
L38	N80°32'52"E	109.60'
L39	N82°15'58"E	298.86'
L40	N79°18'32"E	41.34'
L41	N73°06'26"E	66.65'
L42	N78°22'04"E	490.90'
L43	N74°16'00"E	257.52'
L44	N75°49'04"E	76.78'
L45	N74°20'31"E	49.24'
L46	N78°48'43"E	36.49'
L47	N77°53'23"E	133.15'
L48	N73°14'43"E	195.81'
L49	N72°39'48"E	165.98'
L50	N69°22'43"E	199.81'
L51	N73°06'08"E	230.23'
L52	N73°10'32"E	115.80'
L53	N71°41'06"E	64.80'
L54	N68°00'39"E	114.24'
L55	N64°30'39"E	147.83'
L56	N66°07'23"E	49.17'
L57	N69°43'03"E	203.82'
L58	N69°45'58"E	348.22'
L59	N70°26'04"E	50.86'
L60	N66°00'00"E	292.63'
L61	N65°56'02"E	393.80'
L62	N66°09'06"E	81.70'
L63	N66°19'43"E	129.16'
L64	N68°55'47"E	37.20'
L65	N74°13'10"E	112.33'
L66	N77°54'41"E	45.36'
L67	N82°24'40"E	58.11'
L68	N73°58'19"E	152.42'
L69	N70°42'50"E	108.31'
L70	N68°10'31"E	166.70'
L71	N68°20'32"E	246.80'
L72	N67°39'22"E	206.15'
L73	N67°20'26"E	301.86'
L74	N70°02'52"E	137.66'
L75	N67°05'47"E	151.74'
L76	N67°03'06"E	82.48'
L77	N62°23'44"E	56.40'
L78	N55°30'06"E	73.50'
L79	N50°10'52"E	117.70'
L80	N59°07'01"E	124.40'
L81	N63°22'15"E	326.65'
L82	N61°56'55"E	74.75'
L83	N53°05'34"E	99.99'
L84	N52°13'26"E	158.64'
L85	N56°56'03"E	82.78'
L86	N64°31'40"E	92.27'
L87	N73°15'19"E	154.00'

LINE	BEARING	LENGTH
L88	N73°06'04"E	83.80'
L89	N66°37'43"E	153.70'
L90	N67°33'39"E	117.55'
L91	N73°17'54"E	96.06'
L92	N84°32'22"E	96.45'
L93	N81°12'53"E	49.62'
L94	N62°01'18"E	51.19'
L95	N46°25'02"E	209.39'
L96	N52°17'23"E	103.34'
L97	N60°45'26"E	99.08'
L98	N67°46'42"E	154.95'
L99	N63°53'29"E	89.53'
L100	N56°40'02"E	117.92'
L101	N57°06'45"E	66.77'
L102	N67°31'13"E	48.46'
L103	N73°46'55"E	40.93'
L104	N79°43'07"E	151.34'
L105	N76°25'43"E	54.61'
L106	N66°27'19"E	74.53'
L107	N68°07'09"E	157.42'
L108	N59°44'48"E	168.83'
L109	N60°30'09"E	151.64'
L110	N63°41'27"E	135.26'
L111	N64°52'18"E	217.94'
L112	N61°05'09"E	170.30'
L113	N61°03'39"E	140.88'
L114	N55°51'04"E	103.77'
L115	N70°25'32"E	339.53'
L116	N62°43'07"E	68.31'
L117	N46°28'01"E	206.45'
L118	N60°38'43"E	197.92'
L119	N65°38'20"E	182.55'
L120	N66°40'03"E	27.76'
L121	N58°27'58"E	107.14'
L122	N41°59'07"E	158.02'
L123	N59°48'39"E	101.81'
L124	N67°35'53"E	397.04'
L125	N78°25'00"E	108.84'
L126	N84°20'14"E	119.96'
L127	N72°08'04"E	59.36'
L128	N45°45'39"E	222.19'
L129	N37°37'26"E	295.17'
L130	N37°05'26"E	149.96'
L131	N50°47'00"E	189.04'
L132	N50°01'04"E	437.83'
L133	N58°33'18"E	230.19'
L134	N54°47'50"E	625.11'
L135	N59°02'21"E	522.54'
L136	N55°45'27"E	173.46'
L137	N52°39'47"E	746.86'
L138	N49°22'56"E	228.18'
L139	N49°22'32"E	349.84'
L140	N53°55'01"E	235.55'
L141	N54°26'16"E	178.66'
L142	N46°18'40"E	81.74'
L143	N22°53'07"E	52.62'
L144	N12°31'55"E	113.74'
L145	N17°07'51"E	81.09'
L146	N20°46'32"E	63.59'
L147	N25°27'09"E	66.70'
L148	N32°16'39"E	143.80'
L149	N36°09'10"E	137.65'
L150	N40°43'06"E	185.61'
L151	N55°20'24"E	161.13'
L152	N45°06'55"E	256.05'
L153	N41°55'04"E	70.47'
L154	N53°56'29"E	48.44'
L155	N74°11'06"E	52.79'
L156	S85°52'29"E	65.41'
L157	S78°03'47"E	375.26'
L158	S72°35'12"E	51.22'
L159	S38°58'00"E	134.14'
L160	S42°08'00"E	252.14'
L161	S61°14'07"E	277.41'
L162	S28°15'51"E	15.20'
L163	S16°57'10"E	164.92'
L164	S44°47'03"E	80.89'
L165	S62°58'15"E	28.32'
L166	N87°52'44"E	104.08'
L167	N85°49'26"E	343.49'
L168	N85°44'59"E	59.12'
L169	S52°46'28"E	146.37'
L170	S68°49'30"E	99.69'
L171	N87°18'01"E	226.56'
L172	N67°48'25"E	133.26'
L173	N49°02'21"E	328.58'
L174	N48°46'22"E	57.60'
L175	N75°39'00"E	82.72'
L176	N82°32'21"E	156.52'
L177	N86°32'59"E	248.42'
L178	N86°41'34"E	61.81'

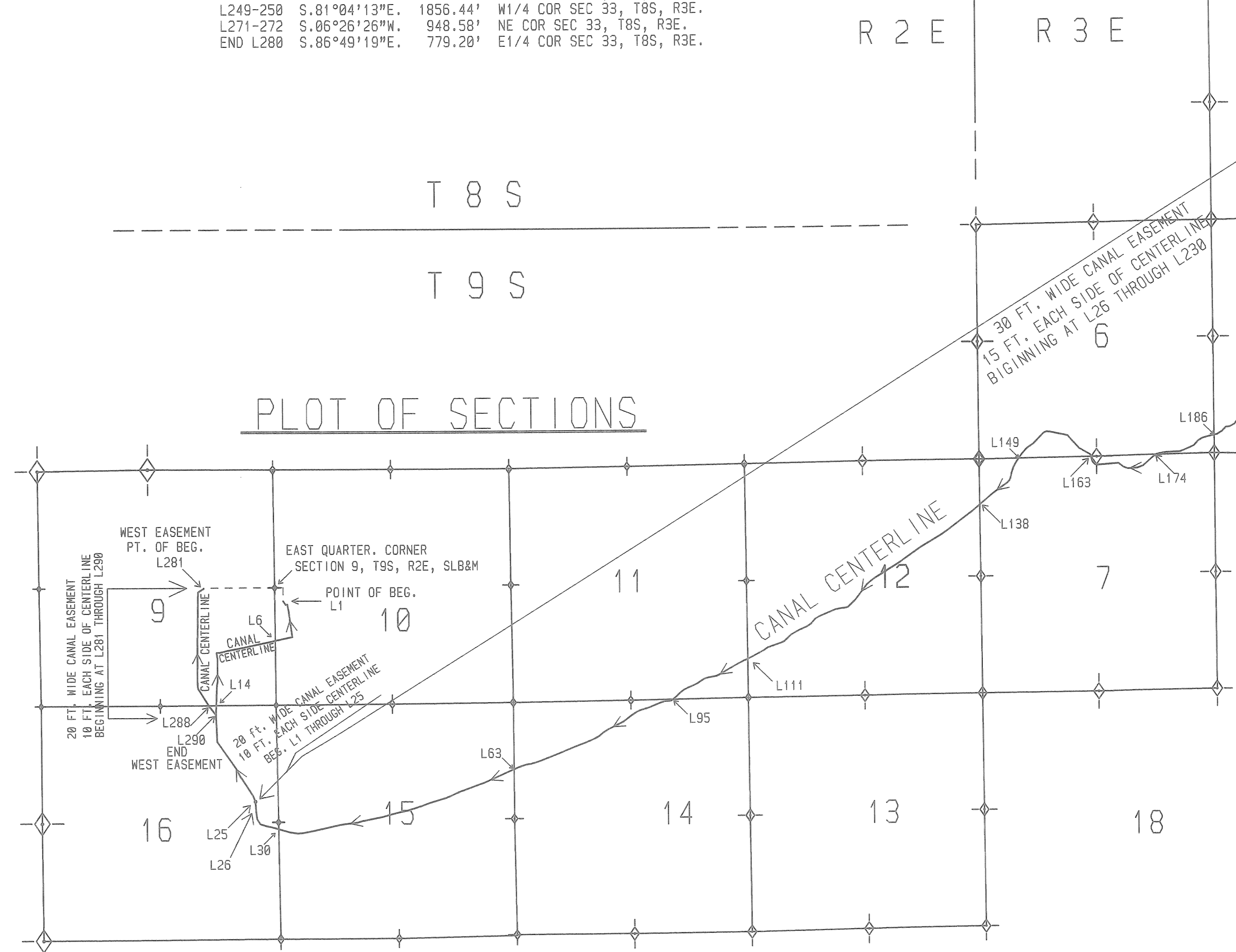
LINE	BEARING	LENGTH
L179	N67°46'46"E	27.24'
L180	N68°01'22"E	82.57'
L181	N67°50'24"E	134.92'
L182	N62°38'42"E	103.52'
L183	N42°04'16"E	138.63'
L184	N57°28'25"E	112.78'
L185	N74°39'02"E	266.25'
L186	N80°31'44"E	75.95'
L187	N57°46'40"E	139.48'
L188	N42°38'07"E	121.54'
L189	N83°30'32"E	88.18'
L190	N61°39'39"E	123.53'
L191	N34°42'30"E	175.48'
L192	N25°30'10"E	321.37'
L193	N31°22'22"E	73.60'
L194	N42°05'17"E	369.18'
L195	N33°47'41"E	96.45'
L196	N05°00'25"E	102.75'
L197	N13°38'53"W	256.91'
L198	N00°09'43"W	222.07'
L199	N01°00'25"E	305.37'
L200	N17°31'05"E	119.45'
L201	N22°00'27"E	363.40'
L202	N26°07'32"E	219.75'
L203	N31°03'57"E	158.86'
L204	N21°26'09"E	74.39'
L205	N14°10'11"E	472.83'
L206	N31°25'22"E	53.60'
L207	N59°06'14"E	54.98'
L208	N67°09'23"E	192.44'
L209	N79°57'39"E	177.71'
L210	N69°21'36"E	213.40'
L211	S89°37'58"E	83.16'
L212	S79°09'43"E	172.73'
L213	N85°31'10"E	344.49'
L214	N85°25'10"E	397.55'
L215	N75°56'49"E	208.70'
L216	N70°05'52"E	341.81'
L217	N58°32'49"E	74.24'
L218	N47°18'12"E	78.23'
L219	N39°24'31"E	176.05'
L220	N24°07'55"E	157.87'
L221	N27°29'28"E	126.56'
L222	N37°54'36"E	173.76'
L223	N35°17'32"E	115.66'
L224	N28°28'25"E	46.96'
L225	N17°45'12"E	168.82'
L226	N00°54'39"E	149.79'
L227	N20°20'06"E	136.50'
L228	N30°34'13"E	286.79'
L229	N54°03'39"E	400.59'
L230	N42°49'08"E	38.65'

CHANGING TO A 40 FOOT WIDE CANAL
 EASEMENT, 20 FEET EACH SIDE OF
 THE FOLLOWING CONTINUED DESCRIBED
 CENTERLINE. THENCE AS FOLLOWS:

L231	N04°24'54"W	108.34'
L232	N60°23'13"E	586.65'
L233	N72°52'38"E	120.01'
L234	N47°50'58"E	141.62'
L235	N62°35'00"E	69.46'
L236	N72°26'54"E	122.85'
L237	N56°21'36"E	66.61'
L238	N39°38'54"E	153.03'
L239	N27°05'27"E	140.27'
L240	N31°30'30"E	87.65'
L241	N58°33'27"E	318.23'
L242	N73°06'23"E	70.54'
L243	N85°35'20"E	175.52'
L244	N46°19'01"E	246.14'
L245	N38°09'26"E	186.95'
L246	N31°20'20"E	104.79'
L247	N35°28'54"E	144.36'
L248	N41°07'35"E	65.33'
L249	N50°00'08"E	332.52'
L250	N62°46'43"E	136.63'
L251	N63°26'06"E	88.32'
L252	N69°23'43"E	137.82'
L253	N64°15'55"E	77.15'
L254	N54°18'01"E	182.82'
L255	N59°59'31"E	107.97'
L256	N63°48'43"E	169.94'
L257	N50°18'52"E	152.68'
L258	N59°38'18"E	97.93'
L259	N47°22'19"E	179.41'
L260	N63°51'02"E	184.93'
L261	N54°32'47"E	99.32'
L262	N56°55'36"E	489.99'
L263	S63°40'55"E	51.88'
L264	N67°29'20"E	282.42'
L265	N64°37'12"E	443.28'

LOCATION OF EASEMENT CENTER LINE INTERSECTION POINTS

INTERSECT PT.	BEARING	DISTANCE	FROM SECTION OR QTR. CORNER
END L290	S.80°50'01"W	1379.22'	NE COR SEC.16, T9S, R2E,
L30-31	S.48°39'47"E	346.60'	E 1/4 COR SEC. 16, T9S, R2E.
L64-65	S.05°49'28"E	1460.51'	W1/4 COR SEC 14, T9S, R2E
L95-96	N.85°34'38"W	1553.28'	S1/4 COR SEC 11, T9S, R2E.
L126-127	N.12°03'16"W	2040.71'	S1/4 COR SEC 12, T9S, R2E.
L139-140	S.20°17'23"E	839.03'	NW COR SEC 7, T9S, R3E.
L158-159	N.53°27'48"W	803.70'	S1/4COR SEC 6, T9S, R3E.
L183-184	N.52°28'46"W	460.92'	SE COR SEC 6, T9S, R3E.
L205-206	S.43°19'04"E	2204.94'	NW COR SEC 5, T9S, R3E.
L230-231	N.77°35'15"W	927.77'	SE COR SEC 32, T8S, R3E.
L249-250	S.81°04'13"E	1856.44'	W1/4 COR SEC 33, T8S, R3E.
L271-272	S.06°26'26"W	948.58'	NE COR SEC 33, T8S, R3E.
END L280	S.86°49'19"E	779.20'	E1/4 COR SEC 33, T8S, R3E.



CONTINUED 40 FEET WIDE CANAL
 EASEMENT, 20 FEET EACH SIDE OF
 CENTERLINE FROM LINE 265 AND;
 CONTINUED AS FOLLOWS:

LINE	BEARING	LENGTH
L266	N60°01'50"E	79.07'
L267	N54°23'54"E	103.93'
L268	N53°08'55"E	383.20'
L269	N50°06'12"E	337.57'
L270	N44°53'03"E	175.81'
L271	N56°35'06"E	144.36'
L272	N86°02'35"E	253.60'
L273	S74°19'38"E	72.18'
L274	S21°52'31"E	456.81'
L275	S17°38'12"E	382.50'
L276	S25°48'59"E	309.74'