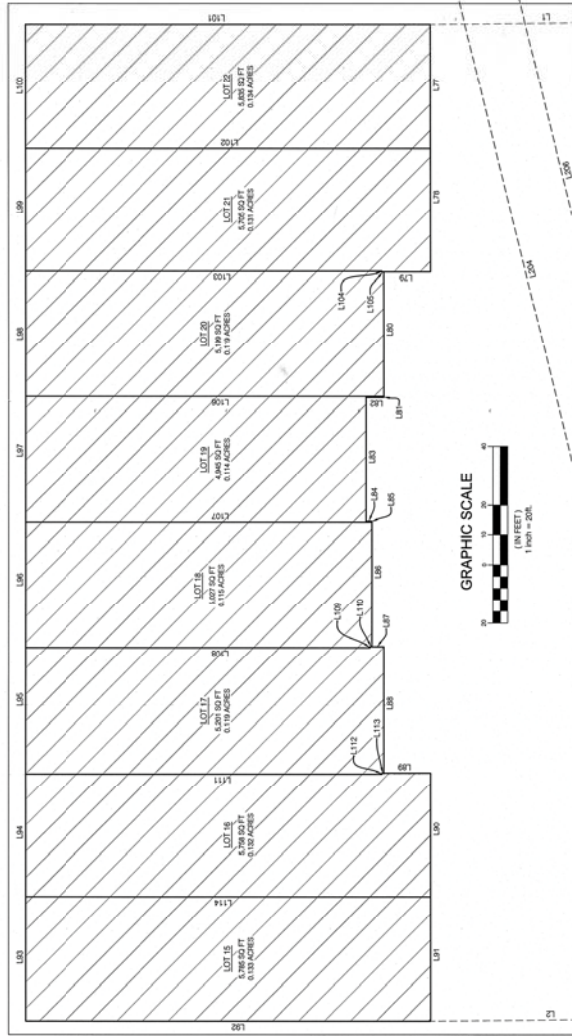
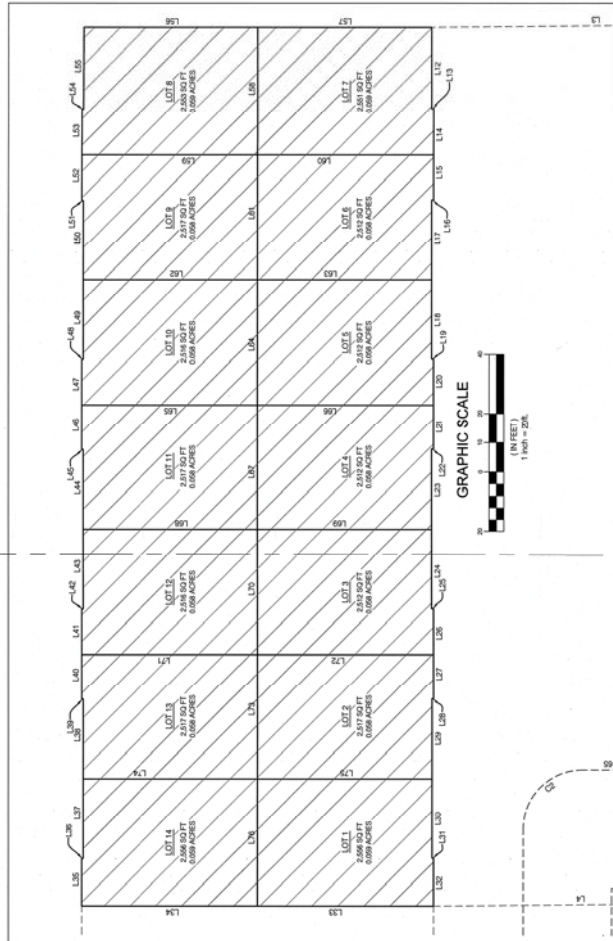
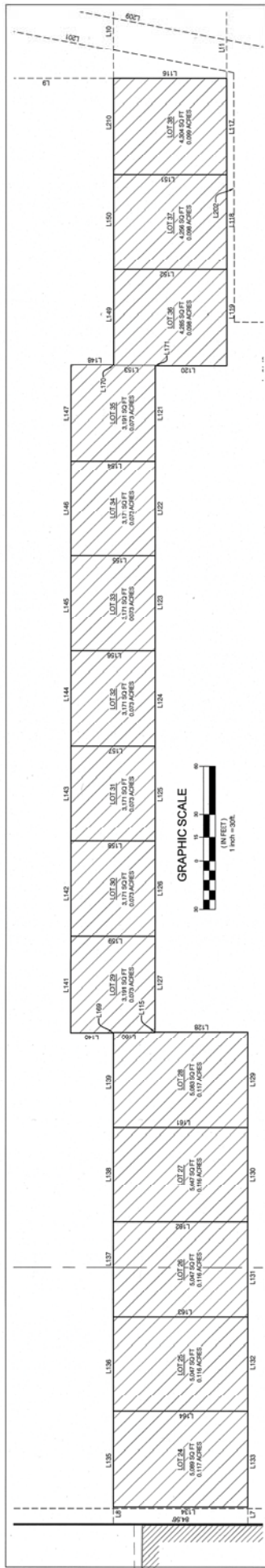




TLS AT WOODS CROSS SUBDIVISION

LOCATED IN THE NORTHWEST AND SOUTHWEST QUARTERS
OF SECTION 35,
TOWNSHIP 2 NORTH, RANGE 1 WEST,
SALT LAKE BASE AND MERIDIAN
WOODS CROSS CITY, DAVIS COUNTY, UTAH

This map is provided solely for the purpose of assisting in locating the property and Cottonwood Title Insurance Agency, Inc. assumes no liability for variation, if any, with any actual survey.



BENCHMARK
ENGINEERING &
LAND SURVEYING
1000 W. 1000 S. SUITE 100
SALT LAKE CITY, UT 84143
www.benchmarkcivil.com

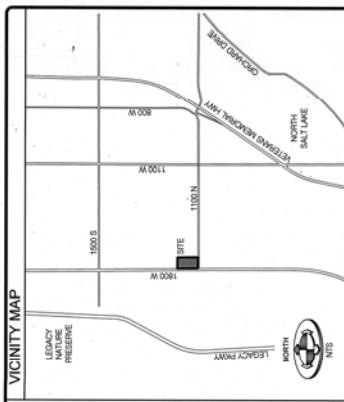


DAVIS COUNTY RECORDER
RECORDED # 2332737
STATE OF UTAH, COUNTY OF DAVIS, RECORDED AND
FILED AT THE REQUEST OF *David J. Wilshire, D.E.*
DATE 5-9-21 TIME 2:33 BOOK 2303 PAGE 183
FEE \$242.00
David J. Wilshire, D.E.
DAVIS COUNTY RECORDER

This map is provided solely for the purpose of assisting in locating the property and Cottonwood Title Insurance Agency, Inc. assumes no liability for variation, if any, with any actual survey.

TLS AT WOODS CROSS SUBDIVISION

LOCATED IN THE NORTHWEST AND SOUTHWEST QUARTERS
 TOWNSHIP 21, SECTION 35, RANGE 1 WEST,
 SALT LAKE BASE AND MERIDIAN,
 WOODS CROSS CITY, DAVIS COUNTY, UTAH



CURVE #	LENGTH	RADIUS	DELTA	CHORD BEARING	CHORD DISTANCE
C1	20.19	20.00	57°51'00"	S 42°00'00" W	20.54
C2	31.42	20.00	90°00'00"	S 45°00'00" W	20.39
C3	30.22	20.00	58°42'00"	S 67°30'00" E	20.92

LINE #	BEARING	DISTANCE
L101	N 80°00'00" E	84.59
L102	N 80°00'00" E	84.59
L103	N 80°00'00" E	84.59
L104	N 80°00'00" E	84.59
L105	N 80°00'00" E	20.50
L106	S 0°00'00" E	68.80
L107	S 0°00'00" E	68.80
L108	N 80°00'00" W	13.92
L109	S 0°00'00" E	0.26
L110	S 0°00'00" E	0.26
L111	S 0°00'00" E	0.26
L112	N 79°14'11" W	180.00
L113	N 80°00'00" E	186.70
L114	N 80°00'00" E	205.33
L115	N 84°23'11" W	275.87
L116	N 80°00'00" E	6.42
L117	N 13°47'31" W	203.98
L118	N 89°47'42" W	207.00
L119	N 80°00'00" E	103.30
L120	N 79°14'11" W	203.30
L121	S 0°00'00" E	60.52

LINE #	BEARING	DISTANCE
L122	N 0°00'00" E	59.90
L123	N 0°00'00" E	59.90
L124	N 0°00'00" E	59.90
L125	N 0°00'00" E	59.90
L126	N 0°00'00" E	59.90
L127	N 0°00'00" E	59.90
L128	N 0°00'00" E	59.90
L129	N 0°00'00" E	59.90
L130	N 0°00'00" E	59.90
L131	N 0°00'00" E	59.90
L132	N 0°00'00" E	59.90
L133	N 0°00'00" E	59.90
L134	N 0°00'00" E	59.90
L135	N 0°00'00" E	59.90
L136	N 0°00'00" E	59.90
L137	N 0°00'00" E	59.90
L138	S 0°00'00" E	59.90
L139	S 0°00'00" E	59.90
L140	N 80°00'00" E	26.97
L141	S 0°00'00" E	59.90
L142	S 0°00'00" E	59.90
L143	S 0°00'00" E	59.90
L144	S 0°00'00" E	59.90
L145	S 0°00'00" E	59.90
L146	S 0°00'00" E	59.90
L147	S 0°00'00" E	59.90
L148	N 80°00'00" W	26.97
L149	S 0°00'00" E	59.90
L150	S 0°00'00" E	59.90
L151	N 80°00'00" E	71.11
L152	N 80°00'00" E	71.11
L153	N 80°00'00" E	26.04
L154	N 80°00'00" E	52.89
L155	N 80°00'00" E	52.89
L156	N 80°00'00" E	52.89
L157	N 80°00'00" E	52.89
L158	N 80°00'00" E	52.89
L159	N 80°00'00" E	52.89
L160	N 80°00'00" E	26.04

LINE #	BEARING	DISTANCE
L161	N 0°00'00" E	0.58
L162	N 0°00'00" E	0.58
L163	N 0°00'00" E	41.87
L164	N 0°00'00" E	2.00
L165	N 0°00'00" E	0.30
L166	N 0°00'00" E	42.20
L167	N 0°00'00" E	4.04
L168	N 0°00'00" E	40.57
L169	N 80°00'00" W	13.89
L170	N 0°00'00" E	42.00
L171	N 0°00'00" E	41.87
L172	N 0°00'00" E	138.04
L173	S 0°00'00" E	41.87
L174	S 0°00'00" E	41.87
L175	S 0°00'00" E	42.57
L176	S 0°00'00" E	42.57
L177	S 0°00'00" E	42.57
L178	S 0°00'00" E	42.57
L179	S 0°00'00" E	41.30
L180	S 0°00'00" E	42.20
L181	N 80°00'00" W	138.04
L182	N 80°00'00" W	121.46
L183	N 80°00'00" E	0.24
L184	S 0°00'00" E	0.24
L185	N 80°00'00" E	0.67
L186	N 80°00'00" E	122.14
L187	N 80°00'00" W	118.92
L188	N 90°00'00" E	117.43
L189	S 0°00'00" E	0.26
L190	S 0°00'00" E	0.26
L191	N 80°00'00" E	121.46
L192	N 0°00'00" E	0.36
L193	N 80°00'00" E	0.67
L194	N 80°00'00" W	99.30
L195	N 80°00'00" W	99.30
L196	N 80°00'00" W	99.30
L197	S 0°00'00" E	42.89
L198	S 0°00'00" E	42.20
L199	N 80°00'00" W	99.30
L200	S 0°00'00" E	41.54
L201	N 80°00'00" E	15.89
L202	N 80°00'00" E	42.20
L203	N 0°00'00" E	20.70
L204	N 80°00'00" E	15.89
L205	S 0°00'00" E	99.89
L206	N 80°00'00" W	99.30
L207	S 0°00'00" E	42.89
L208	S 0°00'00" E	42.20
L209	N 0°00'00" E	41.54
L210	S 0°00'00" E	15.89
L211	S 0°00'00" E	42.39

LINE #	BEARING	DISTANCE
L212	S 0°00'00" E	15.30
L213	S 0°00'00" E	0.59
L214	S 0°00'00" E	26.87
L215	S 0°00'00" E	0.59
L216	N 0°00'00" E	15.34
L217	S 0°00'00" E	15.37
L218	N 80°00'00" W	0.59
L219	S 0°00'00" E	26.87
L220	N 80°00'00" E	0.59
L221	S 0°00'00" E	15.34
L222	S 0°00'00" E	15.37
L223	S 0°00'00" E	0.59
L224	N 80°00'00" E	0.59
L225	S 0°00'00" E	27.67
L226	N 80°00'00" W	99.19
L227	N 80°00'00" W	99.19
L228	S 0°00'00" E	42.80
L229	N 80°00'00" E	99.89
L230	N 80°00'00" E	99.89
L231	S 0°00'00" E	42.20
L232	N 80°00'00" W	99.19
L233	S 0°00'00" E	42.20
L234	N 80°00'00" W	99.19
L235	S 0°00'00" E	16.07
L236	N 80°00'00" E	15.87
L237	S 0°00'00" E	15.97
L238	S 0°00'00" E	42.80
L239	N 80°00'00" W	0.67
L240	N 0°00'00" E	15.90
L241	S 0°00'00" E	42.20
L242	N 80°00'00" W	99.30
L243	N 80°00'00" E	27.11
L244	S 0°00'00" E	26.79
L245	N 80°00'00" E	0.67
L246	N 80°00'00" E	15.87
L247	S 0°00'00" E	15.97
L248	N 80°00'00" E	0.67
L249	N 80°00'00" W	26.79
L250	N 0°00'00" E	15.30
L251	N 80°00'00" E	15.90
L252	N 80°00'00" W	0.67
L253	N 80°00'00" W	99.30
L254	N 80°00'00" W	99.30
L255	S 0°00'00" E	16.07
L256	N 80°00'00" W	99.30
L257	S 0°00'00" E	42.89
L258	S 0°00'00" E	42.20
L259	N 80°00'00" W	99.30
L260	S 0°00'00" E	41.54
L261	S 0°00'00" E	15.89
L262	S 0°00'00" E	42.39

LINE #	BEARING	DISTANCE
L263	S 0°00'00" E	15.34
L264	S 0°00'00" E	15.34
L265	S 0°00'00" E	15.34
L266	S 0°00'00" E	15.34
L267	S 0°00'00" E	15.34
L268	S 0°00'00" E	15.34
L269	S 0°00'00" E	15.34
L270	S 0°00'00" E	15.34
L271	S 0°00'00" E	15.34
L272	S 0°00'00" E	15.34
L273	S 0°00'00" E	15.34
L274	S 0°00'00" E	15.34
L275	S 0°00'00" E	15.34
L276	S 0°00'00" E	15.34
L277	S 0°00'00" E	15.34
L278	S 0°00'00" E	15.34
L279	S 0°00'00" E	15.34
L280	S 0°00'00" E	15.34

DAVIS COUNTY RECORDER
 RECORDED # 20233 237
 FILED AT THE COUNTY OF DAVIS, RECORDED AND
 DATE 6-19-21 TIME 2:53. BOOK 2743 PAGE 264
 FEE \$ 237



BENCHMARK CIVIL
 BENCHMARK ENGINEERING & LAND SURVEYING
 510 SOUTH STATE STREET SUITE 100
 SANDY, UTAH 84070 (801) 462-7100
 www.benchmarkcivil.com