

ST 940.62 FEET; (3) WEST 0.31 FEET;

36 FEET; (2) NORTH 88°05'17" EAST 398.01 FEET; (3) SOUTH 82°51'30" EAST 112.52 FEET; (4) SOUTH
(8) SOUTH 14°55'00" EAST 231.00 FEET; (9) SOUTH 58°50'00" EAST 188.10 FEET; (10) SOUTH 02°45'00"
NORTH 89°12'00" WEST 28.29 FEET; (15) SOUTH 162.09 FEET; (16) EAST 193.40 FEET; (17) SOUTH
ORD BEARING NORTH 86°42'19" WEST 573.44 FEET); (19) SOUTH 84°53'00" WEST 368.15 FEET; (20) WEST
1 89°10'30" WEST 635.34 FEET; (25) NORTH 62°12'51" WEST 99.70 FEET; (26) NORTH 61°55'16" WEST
3'39" WEST 48.70 FEET; (31) NORTH 05°43'59" WEST 88.57 FEET; (32) NORTH 02°04'43" WEST 183.14 FEET;

(2) WEST 257.81 FEET; (3) SOUTH 32.00 FEET; (4) WEST 54.00 FEET; (5) NORTH 32.00 FEET; (6)
UTH 89°29'02" WEST 714.18 FEET; (11) SOUTH 89°19'07" WEST 148.04 FEET; (12) SOUTH 89°50'22" WEST
19°49'24" EAST 18.36 FEET; (17) NORTH 00°43'35" EAST 445.08 FEET; (18) WEST 18.35 FEET; (19) NORTH
; (23) NORTH 06°02'00" EAST 140.13 FEET; (24) SOUTH 89°53'00" EAST 935.26 FEET; (25) NORTH

Ent 360652 Bk 1017 Pg 636-665
Date: 06-JUL-2010 3:28:44PM
Fee: None Filed By: JP
ELIZABETH PALMIER, Recorder
WASATCH COUNTY CORPORATION
For: MIDWAY CITY

EST 3992.08 FEET;

0°33'14" WEST 1000.00 FEET; (3) SOUTH 89°26'46" WEST 1066.00 FEET; (4) SOUTH 45°33'46" WEST 255.59
AST 82.93 FEET; (9) SOUTH 65°23'46" WEST 264.94 FEET; (10) SOUTH 44°54'46" WEST 263.32 FEET; (11)
16 FEET; (15) SOUTH 00°33'14" EAST 10.00 FEET; (16) SOUTH 77°15'18" EAST 155.67 FEET; (17) NORTH

RTH 00°11'02" EAST 792.00 FEET; (3) SOUTH 89°48'58" EAST 1590.62 FEET;

(3) SOUTH 15°10'00" EAST 453.64 FEET; (4) NORTH 84°02'01" EAST 33.43 FEET; (5) SOUTH 09°34'58" EAST

EAST 328.60 FEET;

" WEST 296.64 FEET; (3) SOUTH 75°50'35" WEST 36.83 FEET; (4) NORTH 89°59'18" WEST 890.69 FEET;

(3) NORTH 82°24'00" EAST 32.00 FEET; (4) NORTH 00°00'31" WEST 756.30 FEET; (5) EAST 108.57 FEET;

DE SOUTH 0.86 FEET; (3) EAST 263.17 FEET; (4) SOUTH 192.73 FEET; (5) EAST 100.70 FEET; (6) NORTH
FEET;

" EAST 333.23 FEET;

THE ARC OF A 1378.98 FOOT RADIUS CURVE TO THE RIGHT 65.85 FEET (CENTRAL ANGLE OF 02°44'09" AND A
THE LEFT 693.50 FEET (CENTRAL ANGLE OF 38°14'33" AND A CHORD BEARING SOUTH 52°39'18" EAST 680.70
1'29" EAST 80.14 FEET); (6) SOUTH 00°56'48" EAST 10.86 FEET;

154.24 FEET; (3) SOUTH 75°00'18" EAST 148.72 FEET; (4) SOUTH 58°01'10" EAST 125.33 FEET; (5) SOUTH

5 FEET; (3) NORTH 12°24'36" WEST 11.19 FEET; (4) EAST 1379.31 FEET; (5) NORTH 337.13 FEET; (6)

1 01°17'22" EAST

16.31 FEET;

3) NORTH 00°20'41"

**COMMUNITY DEVELOPMENT
AND RENEWAL AGENCY
OF MIDWAY CITY**
MIDWAY CITY, WASATCH COUNTY, STATE OF UTAH

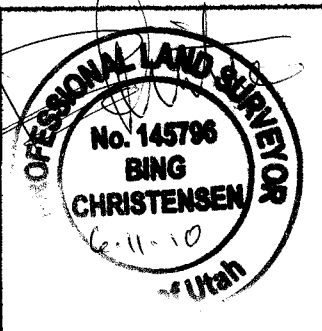
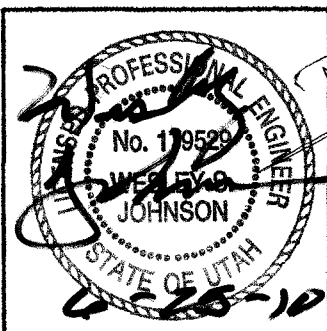
SHEET 1 OF 3

ORDER

CITY ENGINEER

SURVEYOR'S SEAL

RECORDER SEAL



THE SOLDIER HOLLOW MOUNTAIN ANNEXATION SOUTH 04°56'47" EAST 465.62 FEET;

THE HIGH VALLEY RANCH ANNEXATION THE FOLLOWING THREE (3) CALLS: (1) EAST 0.30 FEET; (2) SOUTH 00°19'01" EAST 940.62

THE SOLDIER HOLLOW MOUNTAIN ANNEXATION THE FOLLOWING THIRTY FOUR (34) CALLS: (1) SOUTH 00°17'19" EAST 1534.36 FEET; (2) SOUTH 06°40'00" EAST 128.93 FEET; (3) SOUTH 10°00'00" WEST 523.38 FEET; (4) SOUTH 27°30'00" WEST 192.06 FEET; (5) SOUTH 10°00'00" WEST 462.00 FEET; (6) SOUTH 17°20'00" EAST 284.00 FEET; (7) SOUTH 06°00'00" EAST 430.98 FEET; (8) NORTH 89°10'00" WEST 1394.92 FEET; (9) NORTH 89°27'19" WEST 434.88 FEET; (10) NORTH 89°06'17" WEST 351.27 FEET; (11) NORTH 89°10'30" WEST 263.40; (12) NORTH 54°57'10" WEST 42.00 FEET; (13) NORTH 27°13'48" WEST 304.22 FEET; (14) NORTH 15°53'39" WEST 263.40; (15) NORTH 01°50'05" WEST 622.81 FEET; (16) SOUTH 06°40'00" EAST 128.93 FEET; (17) SOUTH 10°00'00" WEST 523.38 FEET; (18) SOUTH 27°30'00" WEST 192.06 FEET; (19) SOUTH 10°00'00" WEST 462.00 FEET; (20) SOUTH 17°20'00" EAST 284.00 FEET; (21) SOUTH 06°00'00" EAST 430.98 FEET; (22) NORTH 89°10'00" WEST 1394.92 FEET; (23) NORTH 89°27'19" WEST 434.88 FEET; (24) NORTH 89°06'17" WEST 351.27 FEET; (25) NORTH 89°10'30" WEST 263.40; (26) NORTH 54°57'10" WEST 42.00 FEET; (27) NORTH 27°13'48" WEST 304.22 FEET; (28) NORTH 15°53'39" WEST 263.40; (29) NORTH 01°50'05" WEST 622.81 FEET; (30) SOUTH 06°40'00" EAST 128.93 FEET; (31) SOUTH 10°00'00" WEST 523.38 FEET; (32) SOUTH 27°30'00" WEST 192.06 FEET; (33) SOUTH 10°00'00" WEST 462.00 FEET; (34) SOUTH 17°20'00" EAST 284.00 FEET; (35) SOUTH 06°00'00" EAST 430.98 FEET; (36) NORTH 89°10'00" WEST 1394.92 FEET; (37) NORTH 89°27'19" WEST 434.88 FEET; (38) NORTH 89°06'17" WEST 351.27 FEET; (39) NORTH 89°10'30" WEST 263.40; (40) NORTH 54°57'10" WEST 42.00 FEET; (41) NORTH 27°13'48" WEST 304.22 FEET; (42) NORTH 15°53'39" WEST 263.40; (43) NORTH 01°50'05" WEST 622.81 FEET; Ent 360652 Bk 1017 Pg 0637

THE WASATCH MOUNTAIN DEVELOPMENT ANNEXATION THE FOLLOWING TWENTY EIGHT (28) CALLS: (1) NORTH 2.94 FEET; (2) WEST 7.96 FEET; (3) SOUTH 00°56'15" EAST 327.04 FEET; (4) WEST 454.98 FEET; (5) NORTH 89°32'07" WEST 944.35 FEET; (6) SOUTH 89°28'00" WEST 269.00 FEET; (7) NORTH 00°08'05" WEST 781.46 FEET; (8) NORTH 10°57'27" EAST 28.04 FEET; (9) NORTH 19°49'24" WEST 89°51'55" EAST 1320.00 FEET; (10) NORTH 00°08'05" WEST 252.27 FEET; (11) NORTH 01°08'00" EAST 288.69 FEET; (12) NORTH 41°08'04" EAST 10.75 FEET; (13) NORTH 10°47'21" WEST 51.75 FEET; (14) SOUTH 89°40'58" EAST 216.75 FEET; (15) NORTH 2.94 FEET; (16) WEST 7.96 FEET; (17) SOUTH 00°56'15" EAST 327.04 FEET; (18) WEST 454.98 FEET; (19) NORTH 89°32'07" WEST 944.35 FEET; (20) SOUTH 89°28'00" WEST 269.00 FEET; (21) NORTH 00°08'05" WEST 781.46 FEET; (22) NORTH 10°57'27" EAST 28.04 FEET; (23) NORTH 19°49'24" WEST 89°51'55" EAST 1320.00 FEET; (24) NORTH 00°08'05" WEST 252.27 FEET; (25) NORTH 01°08'00" EAST 288.69 FEET; (26) NORTH 41°08'04" EAST 10.75 FEET; (27) NORTH 10°47'21" WEST 51.75 FEET; (28) SOUTH 89°40'58" EAST 216.75 FEET;

THE MIDWAY CITY LIMITS OF THE SOLDIER HOLLOW MOUNTAIN ANNEXATION NORTH 00°24'22" WEST 1271.73 FEET;

THE MIDWAY CITY LIMITS THE FOLLOWING TWO (2) CALLS: (1) SOUTH 89°49'45" WEST 2597.37 FEET; (2) NORTH 00°26'51" WEST 3992.1

THE KOHLER ANNEXATION THE FOLLOWING NINETEEN (19) CALLS: (1) SOUTH 89°26'46" WEST 702.52 FEET; (2) NORTH 00°33'14" WEST 3.96 FEET; (3) SOUTH 89°26'46" WEST 480.00 FEET; (4) SOUTH 00°33'14" EAST 225.00 FEET; (5) NORTH 89°26'46" EAST 82.93 FEET; (6) SOUTH 89°26'46" WEST 480.00 FEET; (7) SOUTH 00°33'14" EAST 225.00 FEET; (8) NORTH 89°26'46" EAST 82.93 FEET; (9) NORTH 04°01'11" WEST 369.19 FEET; (10) NORTH 13°07'32" WEST 119.04 FEET; (11) NORTH 76°36'31" EAST 433.16 FEET; (12) SOUTH 89°47'42" EAST 8.64 FEET; (13) NORTH 00°33'14" WEST 46.05 FEET; (14) NORTH 00°33'14" WEST 46.05 FEET;

THE SUNBURST RANCH ANNEXATION THE FOLLOWING THREE (3) CALLS: (1) NORTH 89°48'58" WEST 194.80 FEET; (2) NORTH 00°11'00" WEST 194.80 FEET; (3) NORTH 89°48'58" WEST 194.80 FEET;

THE HILL ANNEXATION THE FOLLOWING FIVE (5) CALLS: (1) NORTH 25°03'08" WEST 9.17 FEET; (2) EAST 330.00 FEET; (3) SOUTH 89°47'42" EAST 8.64 FEET; (4) NORTH 00°33'14" WEST 46.05 FEET; (5) NORTH 00°33'14" WEST 46.05 FEET;

THE KOHLER ANNEXATION THE FOLLOWING TWO (2) CALLS: (1) NORTH 84°01'13" EAST 36.81 FEET; (2) NORTH 85°44'32" EAST 328.16 FEET;

THE MIDWAY CITY LIMITS NORTH 00°26'51" WEST 1947.96 FEET;

THE FULLER ANNEXATION THE FOLLOWING FIVE (5) CALLS: (1) SOUTH 59°47'26" WEST 153.99 FEET; (2) SOUTH 61°25'34" WEST 290.00 FEET; (3) SOUTH 59°47'26" WEST 153.99 FEET; (4) SOUTH 61°25'34" WEST 290.00 FEET; (5) SOUTH 59°47'26" WEST 153.99 FEET;

THE CLARK-CONDIE ANNEXATION THE FOLLOWING TEN (10) CALLS: (1) WEST 1319.99 FEET; (2) NORTH 1153.00 FEET; (3) NORTH 108.50 FEET; (4) NORTH 157.07 FEET; (5) EAST 1881.00 FEET; (6) NORTH 7.76 FEET; (7) WEST 1319.99 FEET; (8) NORTH 1153.00 FEET; (9) NORTH 108.50 FEET; (10) NORTH 157.07 FEET;

THE TURNBERRY WOODS DISCONNECT THE FOLLOWING TEN (10) CALLS: (1) NORTH 89°59'29" EAST 6.36 FEET; (2) THENCE SOUTH 89°59'29" EAST 6.36 FEET; (3) NORTH 25.65 FEET; (4) NORTH 43°34'51" WEST 505.29 FEET; (5) NORTH 13°03'31" WEST 502.60 FEET; (6) NORTH 89°59'29" EAST 6.36 FEET; (7) THENCE SOUTH 89°59'29" EAST 6.36 FEET; (8) NORTH 25.65 FEET; (9) NORTH 43°34'51" WEST 505.29 FEET; (10) NORTH 13°03'31" WEST 502.60 FEET;

THE CLARK-CONDIE ANNEXATION THE FOLLOWING TWO (2) CALLS: (1) NORTH 144.46 FEET; (2) THENCE SOUTH 25°33'43" EAST 330.00 FEET; (3) NORTH 144.46 FEET; (4) THENCE SOUTH 25°33'43" EAST 330.00 FEET; (5) NORTH 144.46 FEET; (6) THENCE SOUTH 25°33'43" EAST 330.00 FEET; (7) NORTH 144.46 FEET; (8) THENCE SOUTH 25°33'43" EAST 330.00 FEET; (9) NORTH 144.46 FEET; (10) THENCE SOUTH 25°33'43" EAST 330.00 FEET; (11) NORTH 144.46 FEET; (12) THENCE SOUTH 25°33'43" EAST 330.00 FEET; (13) NORTH 144.46 FEET; (14) THENCE SOUTH 25°33'43" EAST 330.00 FEET; (15) NORTH 144.46 FEET; (16) THENCE SOUTH 25°33'43" EAST 330.00 FEET; (17) NORTH 144.46 FEET; (18) THENCE SOUTH 25°33'43" EAST 330.00 FEET; (19) NORTH 144.46 FEET; (20) THENCE SOUTH 25°33'43" EAST 330.00 FEET; (21) NORTH 144.46 FEET; (22) THENCE SOUTH 25°33'43" EAST 330.00 FEET; (23) NORTH 144.46 FEET; (24) THENCE SOUTH 25°33'43" EAST 330.00 FEET; (25) NORTH 144.46 FEET; (26) THENCE SOUTH 25°33'43" EAST 330.00 FEET; (27) NORTH 144.46 FEET; (28) THENCE SOUTH 25°33'43" EAST 330.00 FEET; (29) NORTH 144.46 FEET; (30) THENCE SOUTH 25°33'43" EAST 330.00 FEET; (31) NORTH 144.46 FEET; (32) THENCE SOUTH 25°33'43" EAST 330.00 FEET; (33) NORTH 144.46 FEET; (34) THENCE SOUTH 25°33'43" EAST 330.00 FEET; (35) NORTH 144.46 FEET; (36) THENCE SOUTH 25°33'43" EAST 330.00 FEET; (37) NORTH 144.46 FEET; (38) THENCE SOUTH 25°33'43" EAST 330.00 FEET; (39) NORTH 144.46 FEET; (40) THENCE SOUTH 25°33'43" EAST 330.00 FEET; (41) NORTH 144.46 FEET; (42) THENCE SOUTH 25°33'43" EAST 330.00 FEET; (43) NORTH 144.46 FEET; (44) THENCE SOUTH 25°33'43" EAST 330.00 FEET; (45) NORTH 144.46 FEET; (46) THENCE SOUTH 25°33'43" EAST 330.00 FEET; (47) NORTH 144.46 FEET; (48) THENCE SOUTH 25°33'43" EAST 330.00 FEET; (49) NORTH 144.46 FEET; (50) THENCE SOUTH 25°33'43" EAST 330.00 FEET; (51) NORTH 144.46 FEET; (52) THENCE SOUTH 25°33'43" EAST 330.00 FEET; (53) NORTH 144.46 FEET; (54) THENCE SOUTH 25°33'43" EAST 330.00 FEET; (55) NORTH 144.46 FEET; (56) THENCE SOUTH 25°33'43" EAST 330.00 FEET; (57) NORTH 144.46 FEET; (58) THENCE SOUTH 25°33'43" EAST 330.00 FEET; (59) NORTH 144.46 FEET; (60) THENCE SOUTH 25°33'43" EAST 330.00 FEET; (61) NORTH 144.46 FEET; (62) THENCE SOUTH 25°33'43" EAST 330.00 FEET; (63) NORTH 144.46 FEET; (64) THENCE SOUTH 25°33'43" EAST 330.00 FEET; (65) NORTH 144.46 FEET; (66) THENCE SOUTH 25°33'43" EAST 330.00 FEET; (67) NORTH 144.46 FEET; (68) THENCE SOUTH 25°33'43" EAST 330.00 FEET; (69) NORTH 144.46 FEET; (70) THENCE SOUTH 25°33'43" EAST 330.00 FEET; (71) NORTH 144.46 FEET; (72) THENCE SOUTH 25°33'43" EAST 330.00 FEET; (73) NORTH 144.46 FEET; (74) THENCE SOUTH 25°33'43" EAST 330.00 FEET; (75) NORTH 144.46 FEET; (76) THENCE SOUTH 25°33'43" EAST 330.00 FEET; (77) NORTH 144.46 FEET; (78) THENCE SOUTH 25°33'43" EAST 330.00 FEET; (79) NORTH 144.46 FEET; (80) THENCE SOUTH 25°33'43" EAST 330.00 FEET; (81) NORTH 144.46 FEET; (82) THENCE SOUTH 25°33'43" EAST 330.00 FEET; (83) NORTH 144.46 FEET; (84) THENCE SOUTH 25°33'43" EAST 330.00 FEET; (85) NORTH 144.46 FEET; (86) THENCE SOUTH 25°33'43" EAST 330.00 FEET; (87) NORTH 144.46 FEET; (88) THENCE SOUTH 25°33'43" EAST 330.00 FEET; (89) NORTH 144.46 FEET; (90) THENCE SOUTH 25°33'43" EAST 330.00 FEET; (91) NORTH 144.46 FEET; (92) THENCE SOUTH 25°33'43" EAST 330.00 FEET; (93) NORTH 144.46 FEET; (94) THENCE SOUTH 25°33'43" EAST 330.00 FEET; (95) NORTH 144.46 FEET; (96) THENCE SOUTH 25°33'43" EAST 330.00 FEET; (97) NORTH 144.46 FEET; (98) THENCE SOUTH 25°33'43" EAST 330.00 FEET; (99) NORTH 144.46 FEET; (100) THENCE SOUTH 25°33'43" EAST 330.00 FEET;

THE TURNBERRY WOODS ANNEXATION THE FOLLOWING SIX (6) CALLS: (1) NORTH 53°43'50" EAST 6.74 FEET; (2) ALONG THE ARC OF A 1039.02 FOOT RADIUS CURVE TO THE LEFT 20.50 FOOT RADIUS CURVE TO THE LEFT 80.22 FEET (CENTRAL ANGLE OF 08°49'50" AND A CHORD BEARING SOUTH 76°11'29" EAST 76.11 FEET); (3) SOUTH 33°32'01" EAST 261.06 FEET; (4) ALONG THE ARC OF A 1039.02 FOOT RADIUS CURVE TO THE LEFT 20.50 FOOT RADIUS CURVE TO THE LEFT 80.22 FEET (CENTRAL ANGLE OF 08°49'50" AND A CHORD BEARING SOUTH 76°11'29" EAST 76.11 FEET); (5) SOUTH 33°32'01" EAST 261.06 FEET; (6) NORTH 53°43'50" EAST 6.74 FEET;

THE CLARK-CONDIE ANNEXATION THE FOLLOWING SEVEN (7) CALLS: (1) SOUTH 88°34'39" EAST 212.03 FEET; (2) EAST 154.24 FEET; (3) SOUTH 24°28'21" EAST 48.38 FEET; (4) SOUTH 00°36'55" WEST 175.00 FEET; (5) EAST 154.24 FEET; (6) SOUTH 88°34'39" EAST 212.03 FEET; (7) SOUTH 88°34'39" EAST 212.03 FEET;

THE JOHNSON ANNEXATION THE FOLLOWING TEN (10) CALLS: (1) EAST 304.85 FEET; (2) NORTH 13°30'57" WEST 169.05 FEET; (3) EAST 300.00 FEET; (4) SOUTH 00°28'17" EAST 200.00 FEET; (5) SOUTH 145.20 FEET; (6) EAST 227.10 FEET; (7) EAST 300.00 FEET; (8) SOUTH 00°28'17" EAST 200.00 FEET; (9) SOUTH 145.20 FEET; (10) EAST 227.10 FEET;

THE HUBER ANNEXATION THE FOLLOWING THREE (3) CALLS: (1) NORTH 86.20 FEET; (2) EAST 768.42 FEET; (3) SOUTH 01°17'22" WEST 768.42 FEET;

THE VARGA PARCEL ANNEXATION THE FOLLOWING TWO (2) CALLS: (1) SOUTH 89°16'14" EAST 15.53 FEET; (2) SOUTH 796.31 FEET;

THE MIDWAY CITY LIMITS SOUTH 89°59'43" EAST 621.83 FEET;

THE MIDWAY VILLAGE ANNEXATION THE FOLLOWING THREE (3) CALLS: (1) NORTH 2329.61 FEET; (2) EAST 2.41 FEET; (3) NORTH BEGINNING.

COUNTY RECORDER

WASATCH COUNTY SURVEYOR

DATE: 6-18-10

[Empty box for stamp or signature]

THENCE ALONG THE BOUNDARY OF THE SOLDIER HOLLOW MOUNTAIN ANNEXATION SO

THENCE ALONG THE BOUNDARY OF THE HIGH VALLEY RANCH ANNEXATION THE FOLLI

THENCE ALONG THE BOUNDARY OF THE SOLDIER HOLLOW MOUNTAIN ANNEXATION TH
77°58'24" EAST 385.12 FEET; (5) SOUTH 06°40'00" EAST 128.93 FEET; (6) SOUTH
WEST 217.80 FEET; (11) SOUTH 85°40'00" WEST 462.00 FEET; (12) SOUTH 17°20'00"
16°36'00" EAST 635.03 FEET; (18) ALONG THE ARC OF A 1960.10 FOOT RADIUS CU
55.16 FEET; (21) NORTH 00°17'18" WEST 1394.92 FEET; (22) NORTH 89°27'19" WE
263.40 FEET; (27) NORTH 61°55'16" WEST 263.40; (28) NORTH 54°57'10" WEST 4
(33) NORTH 01°53'20" WEST 205.90 FEET; (34) NORTH 01°50'05" WEST 622.81 FEE

THENCE ALONG THE BOUNDARY OF THE WASATCH MOUNTAIN DEVELOPMENT ANNEXA
NORTH 58°56'07" WEST 288.53 FEET; (7) SOUTH 00°56'15" EAST 327.04 FEET; (8)
177.68 FEET; (13) NORTH 89°59'24" WEST 269.00 FEET; (14) NORTH 00°08'05" W
00°08'05" WEST 63.30 FEET; (20) NORTH 89°51'55" EAST 1320.00 FEET; (21) NORTH
89°27'11" EAST 110.19 FEET; (26) NORTH 41°08'04" EAST 10.75 FEET; (27) NORTH

THENCE THENCE ALONG THE BOUNDARY OF THE SOLDIER HOLLOW MOUNTAIN ANNEX

THENCE ALONG THE 1885 ORIGINAL MIDWAY CITY LIMITS THE FOLLOWING TWO (2) CA

THENCE ALONG THE BOUNDARY OF THE KOHLER ANNEXATION THE FOLLOWING NINETE
FEET; (5) NORTH 00°33'14" WEST 59.96 FEET; (6) SOUTH 89°26'46" WEST 480.00
NORTH 00°33'14" WEST 751.69 FEET; (12) NORTH 04°01'11" WEST 369.19 FEET; (1
08°11'24" EAST 163.58 FEET; (18) SOUTH 89°47'42" EAST 8.64 FEET; (19) NORTH

THENCE ALONG THE BOUNDARY OF THE SUNBURST RANCH ANNEXATION THE FOLLO

THENCE ALONG THE BOUNDARY OF THE HILL ANNEXATION THE FOLLOWING FIVE (5)
0.74 FEET;

THENCE ALONG THE BOUNDARY OF THE KOHLER ANNEXATION THE FOLLOWING TWO (2)

THENCE ALONG THE 1885 ORIGINAL MIDWAY CITY LIMITS NORTH 00°26'51" WEST 194

THENCE ALONG THE BOUNDARY OF THE FULLER ANNEXATION THE FOLLOWING FIVE (5)
(5) NORTH 23.27 FEET;

THENCE ALONG THE BOUNDARY OF THE CLARK-CONDIE ANNEXATION THE FOLLOWING
(6) NORTH 727.00 FEET; (7) WEST 108.50 FEET; (8) NORTH 157.07 FEET; (9) NORTH

THENCE ALONG THE BOUNDARY OF THE TURNBERRY WOODS DISCONNECT THE FOLLI
30°10'00" WEST 1.83 FEET; (7) EAST 92.59 FEET; (8) NORTH 25.65 FEET; (9) NORTH

THENCE ALONG THE BOUNDARY OF THE CLARK-CONDIE ANNEXATION THE FOLLOWING
THENCE SOUTH 37°23'31" EAST 84.33 FEET;

THENCE ALONG THE BOUNDARY OF THE TURNBERRY WOODS ANNEXATION THE FOLLI
CHORD BEARING SOUTH 34°54'05" EAST 65.84 FEET); (3) SOUTH 33°32'01" EAST
FEET); (5) ALONG THE ARC OF A 520.50 FOOT RADIUS CURVE TO THE LEFT 80.2

THENCE ALONG THE BOUNDARY OF THE CLARK-CONDIE ANNEXATION THE FOLLOWING
29°38'57" EAST 202.81 FEET; (6) SOUTH 24°28'21" EAST 48.38 FEET; (7) SOUTH

THENCE ALONG THE BOUNDARY OF THE JOHNSON ANNEXATION THE FOLLOWING TEN
NORTH 00°28'17" WEST 200.01 FEET; (7) EAST 300.00 FEET; (8) SOUTH 00°28'1

THENCE ALONG THE BOUNDARY OF THE HUBER ANNEXATION THE FOLLOWING THREE
382.07 FEET;

THENCE ALONG THE BOUNDARY OF THE VARGA PARCEL ANNEXATION THE FOLLOWING
THENCE ALONG THE 1885 ORIGINAL MIDWAY CITY LIMITS SOUTH 89°59'43" EAST 62

THENCE ALONG THE BOUNDARY OF THE MIDWAY VILLAGE ANNEXATION THE FOLLOWING
WEST 338.36 FEET TO THE POINT OF BEGINNING.

CONTAINING: 3,314.33 ACRES

Ent 360652 Bk 1017 Pg 0638

WASATCH COUNTY SURVEYOR

LINE	LENGTH	BEARING
L251	502.60'	N 13°03'31" W
L252	144.46'	NORTH
L253	333.23'	S 25°33'43" E
L254	84.33'	S 37°23'31" E
L255	6.74'	N 53°43'50" E
L256	261.06'	S 33°32'01" E
L257	10.66'	S 00°56'48" E
L258	212.03'	S 88°34'39" E
L259	154.24'	EAST
L260	148.72'	S 75°00'18" E
L261	125.33'	S 58°01'10" E
L262	202.81'	S 29°38'57" E
L263	48.38'	S 24°28'21" E
L264	175.00'	S 00°36'55" W
L265	304.85'	EAST
L266	169.05'	N 13°30'57" W
L267	11.19'	N 12°24'36" W
L268	337.13'	NORTH
L269	200.01'	N 00°28'17" W
L270	300.00'	EAST
L271	200.00'	S 00°28'17" E
L272	145.20'	SOUTH
L273	227.10'	EAST
L274	86.20'	NORTH
L275	768.42'	EAST
L276	382.07'	S 01°17'22" E
L277	15.53'	S 89°16'14" E
L278	796.31'	SOUTH
L279	621.83'	S 89°59'43" E
L280	2.41'	EAST
L281	338.36'	N 00°20'41" W
L282	2.94'	NORTH
L283	99.70'	N 62°12'51" W
L284	31.59'	N 62°22'36" W

OF MIDWAY

Ent 360652 Bk 1017 Pg 0639

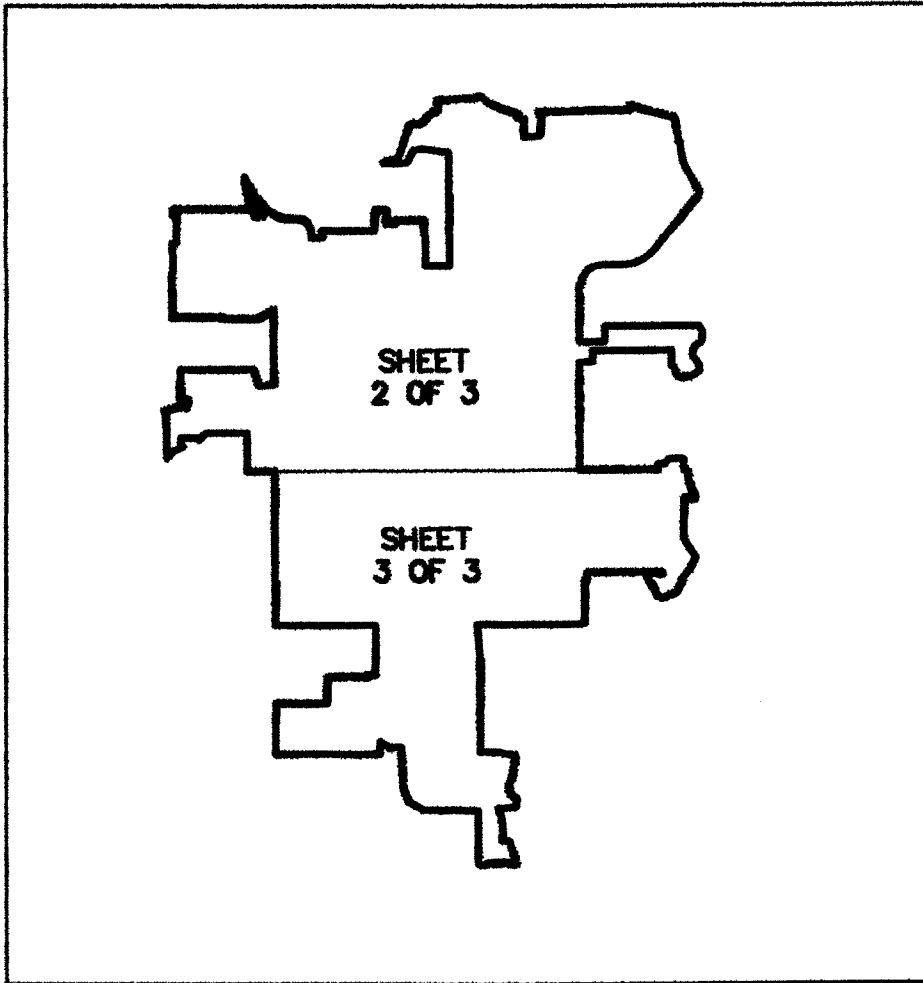
51.51'	S 11°17'37" W
41.28'	S 11°31'02" W
42.49'	S 00°17'12" E
573.44'	N 86°42'19" W
65.84'	S 34°54'05" E
680.70'	S 52°39'18" E
80.14'	S 76°11'29" E

LENGTH	BEARING	LINE	LENGTH	BEARING	LINE	LENGTH	BEARING	LINE	LENGTH
10.00'	S 00°53'17" W	L101	101.40'	N 34°31'10" W	L151	398.01'	N 88°05'17" E	L201	110.
238.13'	N 84°09'19" E	L102	94.00'	N 10°16'10" W	L152	112.52'	S 82°51'30" E	L202	10.
464.41'	N 02°52'36" E	L103	66.51'	N 18°25'10" W	L153	385.12'	S 77°58'24" E	L203	51.
196.98'	N 22°18'42" W	L104	61.85'	S 89°46'06" W	L154	128.93'	S 06°40'00" E	L204	216.
0.66'	S 00°13'42" E	L105	421.74'	N 00°10'10" W	L155	523.38'	S 10°00'00" W	L205	702.
133.42'	N 00°05'01" E	L106	293.20'	S 00°02'18" E	L156	192.06'	S 27°30'00" W	L206	255.
335.17'	S 70°24'45" E	L107	339.08'	S 89°46'06" W	L157	231.00'	S 14°55'00" E	L207	59.
381.69'	S 75°27'48" E	L108	27.95'	S 03°00'00" E	L158	188.10'	S 58°50'00" E	L208	480.
3.40'	S 01°08'08" E	L109	17.75'	S 89°47'29" E	L159	217.80'	S 02°45'00" W	L209	225.
36.49'	S 74°32'43" E	L110	171.43'	N 00°12'31" E	L160	462.00'	S 85°40'00" W	L210	62.
41.83'	S 80°52'41" E	L111	198.07'	N 85°12'31" E	L161	264.00'	S 17°20'00" E	L211	264.
98.15'	S 75°39'56" E	L112	150.48'	N 42°42'31" E	L162	430.98'	S 06°00'00" E	L212	263.
78.35'	S 73°56'53" E	L113	376.87'	S 89°47'29" E	L163	26.29'	N 89°12'00" W	L213	751.
15.18'	S 54°51'49" E	L114	204.49'	SOUTH	L164	162.09'	SOUTH	L214	369.
117.29'	S 75°51'23" E	L115	104.25'	S 19°50'51" E	L165	193.40'	EAST	L215	119.
84.20'	S 76°40'42" E	L116	57.30'	S 88°11'00" E	L166	635.03'	S 16°36'00" E	L216	433.
9.36'	S 08°58'43" E	L117	358.50'	S 09°30'09" E	L167	368.15'	S 84°53'00" W	L217	10.
23.40'	S 76°55'29" E	L118	331.50'	S 23°00'11" E	L168	55.16'	WEST	L218	155.
20.69'	S 04°42'37" E	L119	43.40'	S 07°05'14" E	L169	434.88'	N 89°27'19" W	L219	163.
90.75'	S 13°48'53" E	L120	29.80'	S 24°23'18" W	L170	351.27'	N 89°06'17" W	L220	8.
202.51'	S 11°46'47" E	L121	35.20'	S 47°44'14" W	L171	635.34'	N 89°10'30" W	L221	46.
156.04'	S 10°23'03" E	L122	30.60'	N 88°51'35" W	L172	263.40'	N 61°55'16" W	L222	194.
129.27'	S 09°33'11" E	L123	27.80'	NORTH	L173	42.00'	N 54°57'10" W	L223	792.
52.22'	S 05°19'13" E	L124	217.80'	WEST	L174	304.22'	N 27°13'48" W	L224	9.
43.04'	N 88°16'31" E	L125	198.09'	SOUTH	L175	48.70'	N 15°53'39" W	L225	330.
141.32'	S 00°16'45" E	L126	0.31'	WEST	L176	88.57'	N 05°43'59" W	L226	453.
10.47'	N 80°56'30" E	L127	408.64'	S 33°32'30" E	L177	183.14'	N 02°04'43" W	L227	33.
276.88'	S 09°03'30" E	L128	214.73'	S 22°52'31" W	L178	205.90'	N 01°53'20" W	L228	0.
779.59'	S 29°33'26" E	L129	219.26'	S 33°54'05" W	L179	622.81'	N 01°50'05" W	L229	36.
511.76'	S 38°11'44" W	L130	179.68'	S 38°48'43" W	L180	257.81'	WEST	L230	328.
523.86'	S 89°39'22" W	L131	470.31'	S 27°36'16" W	L181	32.00'	SOUTH	L231	153.
34.09'	S 89°53'07" W	L132	26.66'	N 88°21'08" W	L182	54.00'	WEST	L232	296.
660.86'	N 89°46'06" E	L133	105.77'	S 79°17'06" W	L183	32.00'	NORTH	L233	36.
396.39'	N 00°02'18" W	L134	132.39'	S 66°43'16" W	L184	288.53'	N 58°56'07" W	L234	23.
5.11'	S 05°07'44" W	L135	88.88'	S 68°39'05" W	L185	327.04'	S 00°56'15" E	L235	32.
172.21'	S 34°10'46" E	L136	126.31'	S 87°23'03" W	L186	454.98'	WEST	L236	756.
130.02'	S 01°50'45" W	L137	702.31'	N 27°32'18" W	L187	944.35'	N 89°32'07" W	L237	108.
157.26'	S 10°37'48" W	L138	447.65'	S 89°59'59" E	L188	714.18'	S 89°29'02" W	L238	727.
152.04'	S 62°59'15" W	L139	36.39'	N 03°00'00" W	L189	148.04'	S 89°19'07" W	L239	108.
188.44'	S 29°30'28" W	L140	67.68'	S 00°02'34" E	L190	177.68'	S 89°50'22" W	L240	157.
118.10'	S 01°42'26" W	L141	27.81'	S 00°29'55" W	L191	269.00'	N 89°59'24" W	L241	7.
80.16'	S 39°02'51" E	L142	114.48'	S 22°05'19" W	L192	781.46'	N 00°08'05" W	L242	6.
203.18'	S 35°12'43" E	L143	219.85'	S 00°56'45" W	L193	28.04'	N 10°57'27" E	L243	0.
160.69'	S 04°28'15" E	L144	765.40'	S 01°31'10" E	L194	18.36'	N 19°49'24" E	L244	263.
111.63'	S 53°55'42" W	L145	74.72'	S 89°58'32" W	L195	445.08'	N 00°43'35" E	L245	192.
126.68'	S 64°04'20" W	L146	15.32'	S 00°16'57" E	L196	18.35'	WEST	L246	100.
56.93'	S 45°57'10" W	L147	364.24'	S 04°56'47" E	L197	63.30'	N 00°08'05" W	L247	1.
218.16'	S 89°37'32" W	L148	0.31'	WEST	L198	252.27'	N 00°08'05" W	L248	92.
21.05'	S 00°10'10" E	L149	465.62'	S 04°56'47" E	L199	288.69'	N 01°08'00" E	L249	25.
126.70'	N 58°19'10" W	L150	0.30'	EAST	L200	140.13'	N 06°02'00" E	L250	505.

C5	157.75'	1482.69'	06°05'46"	157.68'	S 36°35'13" E
C6	51.81'	137.50'	21°35'24"	51.51'	S 11°17'37" W
C7	41.51'	112.50'	21°08'34"	41.28'	S 11°31'02" W
C8	42.49'	987.50'	02°27'55"	42.49'	S 00°17'12" E
C9	575.50'	1960.10'	16°49'21"	573.44'	N 86°42'19" W
C10	65.85'	1378.98'	02°44'09"	65.84'	S 34°54'05" E
C11	693.50'	1039.02'	38°14'33"	680.70'	S 52°39'18" E
C12	80.22'	520.50'	08°49'50"	80.14'	S 76°11'29" E

Ent 360652 Bk 1017 Pg 0640

LINE	LENGTH	BEARING	LINE	LENGTH	BEARING	LINE	LENGTH	BE
L1	3.92'	N 00°20'41" W	L51	10.00'	S 00°53'17" W	L101	101.40'	N 3
L2	259.92'	N 01°48'43" W	L52	238.13'	N 84°09'19" E	L102	94.00'	N 11
L3	542.29'	N 82°04'13" W	L53	464.41'	N 02°52'36" E	L103	66.51'	N 18
L4	147.18'	N 81°50'41" W	L54	196.98'	N 22°18'42" W	L104	61.85'	S 89
L5	231.00'	S 79°54'19" W	L55	0.66'	S 00°13'42" E	L105	421.74'	N 01
L6	374.41'	S 27°39'19" W	L56	133.42'	N 00°05'01" E	L106	293.20'	S 01
L7	616.25'	S 89°20'00" W	L57	335.17'	S 70°24'45" E	L107	339.08'	S 89
L8	13.54'	NORTH	L58	381.69'	S 75°27'48" E	L108	27.95'	S 01
L9	111.65'	N 57°28'01" E	L59	3.40'	S 01°08'08" E	L109	17.75'	S 89
L10	121.73'	N 76°31'03" E	L60	36.49'	S 74°32'43" E	L110	171.43'	N 01
L11	132.84'	N 88°21'03" E	L61	41.83'	S 80°52'41" E	L111	198.07'	N 81
L12	16.49'	N 57°29'29" E	L62	98.15'	S 75°39'56" E	L112	150.48'	N 41
L13	36.07'	N 38°53'56" E	L63	78.35'	S 73°56'53" E	L113	376.87'	S 89
L14	235.00'	N 24°29'22" E	L64	15.18'	S 54°51'49" E	L114	204.49'	
L15	657.66'	N 17°00'31" E	L65	117.29'	S 75°51'23" E	L115	104.25'	S 11
L16	53.67'	N 42°06'42" E	L66	84.20'	S 76°40'42" E	L116	57.30'	S 81
L17	44.49'	N 71°48'38" E	L67	9.36'	S 08°58'43" E	L117	358.50'	S 09
L18	46.80'	N 77°56'45" E	L68	23.40'	S 76°55'29" E	L118	331.50'	S 21
L19	79.51'	S 77°04'59" E	L69	20.69'	S 04°42'37" E	L119	43.40'	S 01
L20	71.83'	N 52°33'29" E	L70	90.75'	S 13°48'53" E	L120	29.80'	S 24
L21	99.13'	N 45°26'02" E	L71	202.51'	S 11°46'47" E	L121	35.20'	S 47
L22	22.16'	N 52°45'41" W	L72	156.04'	S 10°23'03" E	L122	30.60'	N 88
L23	226.50'	N 47°54'01" E	L73	129.27'	S 09°33'11" E	L123	27.80'	
L24	69.57'	S 83°24'41" E	L74	52.22'	S 05°19'13" E	L124	217.80'	
L25	60.05'	N 78°55'13" E	L75	43.04'	N 88°16'31" E	L125	198.09'	
L26	291.80'	N 00°17'08" W	L76	141.32'	S 00°16'45" E	L126	0.31'	
L27	51.33'	N 87°35'13" E	L77	10.47'	N 80°56'30" E	L127	408.64'	S 31
L28	111.17'	N 87°01'48" E	L78	276.88'	S 09°03'30" E	L128	214.73'	S 22
L29	112.71'	N 87°20'22" E	L79	779.59'	S 29°33'26" E	L129	219.26'	S 33
L30	103.28'	N 88°02'09" E	L80	511.76'	S 38°11'44" W	L130	179.68'	S 38
L31	104.87'	N 86°44'49" E	L81	523.86'	S 89°39'22" W	L131	470.31'	S 27
L32	99.25'	N 87°02'01" E	L82	34.09'	S 89°53'07" W	L132	26.66'	N 88
L33	99.12'	N 86°41'09" E	L83	660.86'	N 89°46'06" E	L133	105.77'	S 79
L34	350.71'	N 87°10'15" E	L84	396.39'	N 00°02'18" W	L134	132.39'	S 66
L35	43.25'	N 08°29'38" W	L85	5.11'	S 05°07'44" W	L135	88.88'	S 68
L36	62.08'	N 87°27'20" E	L86	172.21'	S 34°10'46" E	L136	126.31'	S 87
L37	101.85'	S 65°16'58" E	L87	130.02'	S 01°50'45" W	L137	702.31'	N 27
L38	60.03'	S 60°23'31" E	L88	157.26'	S 10°37'48" W	L138	447.65'	S 89
L39	69.85'	S 60°32'44" E	L89	152.04'	S 62°59'15" W	L139	36.39'	N 03
L40	199.49'	S 56°00'54" E	L90	188.44'	S 29°30'28" W	L140	67.68'	S 00
L41	153.22'	S 67°46'44" E	L91	118.10'	S 01°42'26" W	L141	27.81'	S 00
L42	129.45'	S 67°36'37" E	L92	80.16'	S 39°02'51" E	L142	114.48'	S 22
L43	131.14'	S 73°50'55" E	L93	203.18'	S 35°12'43" E	L143	219.85'	S 00
L44	129.27'	S 71°44'36" E	L94	160.69'	S 04°28'15" E	L144	765.40'	S 01
L45	130.89'	S 74°47'35" E	L95	111.63'	S 53°55'42" W	L145	74.72'	S 89
L46	88.71'	S 20°26'25" W	L96	126.68'	S 64°04'20" W	L146	15.32'	S 00
L47	129.90'	S 74°20'40" E	L97	56.93'	S 45°57'10" W	L147	364.24'	S 04
L48	64.80'	S 79°36'33" E	L98	218.16'	S 89°37'32" W	L148	0.31'	
L49	487.69'	S 00°05'32" E	L99	21.05'	S 00°10'10" E	L149	465.62'	S 04
L50	197.10'	N 84°09'59" E	L100	126.70'	N 58°19'10" W	L150	0.30'	



PLAT KEY

CURVE	LENGTH	RADIUS	DELTA	CHORD	BEARING
C1	131.84'	150.00'	50°21'32"	127.64'	N 77°44'15" E
C2	239.71'	670.00'	20°29'56"	238.43'	S 19°18'28" E
C3	1038.21'	1155.93'	51°27'38"	1003.66'	S 63°55'33" W
C4	859.83'	548.78'	89°46'15"	774.54'	S 44°46'15" W
C5	157.75'	1482.69'	06°05'46"	157.68'	S 36°35'13" E
C6	51.81'	137.50'	21°35'24"	51.51'	S 11°17'37" W
C7	41.51'	112.50'	21°08'34"	41.28'	S 11°31'02" W
C8	42.49'	987.50'	02°27'55"	42.49'	S 00°17'12" E
C9	575.50'	1960.10'	16°49'21"	573.44'	N 86°42'19" W
C10	65.85'	1378.98'	02°44'09"	65.84'	S 34°54'05" E
C11	693.50'	1039.02'	38°14'33"	680.70'	S 52°39'18" E
C12	80.22'	520.50'	08°49'50"	80.14'	S 76°11'29" E

LINE	LENGTH	BEARING	LINE	LENGTH	BEARING	LINE	LENGTH
L1	3.92'	N 00°20'41" W	L51	10.00'	S 00°53'17" W	L101	101.40' N
L2	259.92'	N 01°48'43" W	L52	238.13'	N 84°09'19" E	L102	94.00' N
L3	542.29'	N 82°04'13" W	L53	464.41'	N 02°52'36" E	L103	66.51' N
L4	147.18'	N 81°50'41" W	L54	196.98'	N 22°18'42" W	L104	61.85' S
L5	231.00'	S 79°54'19" W	L55	0.66'	S 00°13'42" E	L105	421.74' N
L6	374.41'	S 27°39'19" W	L56	133.42'	N 00°05'01" E	L106	293.20' S
L7	616.25'	S 89°20'00" W	L57	335.17'	S 70°24'45" E	L107	339.08' S


DWAY CITY PLAT - 10 JUNE 2010

SURVEYOR'S CERTIFICATE

I, BING CHRISTENSEN, DO HEREBY CERTIFY THAT I AM A PROFESSIONAL SURVEYOR HOLDING LICENSE NUMBER 145796 IN ACCORDANCE WITH TITLE CHAPTER 22, OF THE PROFESSIONAL ENGINEERS AND PROFESSIONAL LAND SURVEYORS LICENSING ACT.

I FURTHER CERTIFY THAT THIS PLAT WAS PREPARED UNDER MY DIRECT CONFORMANCE WITH INFORMATION AND DATA PROVIDED BY THE OFFICE OF WASATCH COUNTY SURVEYOR. UNDER NO CIRCUMSTANCE SHOULD THIS PLAT OR ITS ACCOMPANYING BOUNDARY DESCRIPTION BE INTERPRETED AS REPRESENTING AN ACTUAL SURVEY OR THE RESULTS OF AN ACTUAL SURVEY CONDUCTED IN CONFORMANCE WITH SECTION 17-23-17 OF THE UTAH CODE. FURTHERMORE, THIS BOUNDARY DESCRIPTION AS SHOWN HEREON MAKES NO ATTEMPT TO RECONCILE OR UNIFY, EITHER BY SURVEY OR OTHERWISE, THE SEPARATE BASIS OF BEARING POINTS OF BEGINNING OF ALL THE OFFICIALLY RECORDED ANNEXATION PLATS OF THE TOWN OF MIDWAY REFERENCED THEREIN.

6-11-10
DATE


SURVEYOR (SEE SEAL BELOW)

CERTIFICATION

THE CITY OF MIDWAY, A BODY POLITIC LOCATED IN WASATCH COUNTY, UTAH, CERTIFIES THAT IT HAS CREATED THE COMMUNITY DEVELOPMENT AND REDEVELOPMENT AGENCY OF MIDWAY CITY, AS DEPICTED ON THIS PLAT, PURSUANT TO UTAH CODE SECTION 17C-1-201.

APPROVED Carrie Tatton
MAYOR

ATTEST Bradley
CLERK-RECORDS
(SEE SEAL BELOW)

APPROVED Kraig J. Powell
CITY ATTORNEY

APPROVED Deborah Lee
CITY ENGINEER

COMMUNITY DEVELOPMENT AND RENEWAL AGENCY OF MIDWAY CITY

BEARING	LINE	LENGTH	BEARING	LINE	LENGTH	BEARING	LINE	LENGTH	BEARING
N 34°31'10" W	L151	398.01'	N 88°05'17" E	L201	110.19'	N 89°27'11" E	L251	502.60'	N 13°00'00" E
N 10°16'10" W	L152	112.52'	S 82°51'30" E	L202	10.75'	N 41°08'04" E	L252	144.46'	
N 18°25'10" W	L153	385.12'	S 77°58'24" E	L203	51.75'	N 10°47'21" W	L253	333.23'	S 25°00'00" E
S 89°46'06" W	L154	128.93'	S 06°40'00" E	L204	216.75'	S 89°40'58" E	L254	84.33'	S 37°00'00" E
N 00°10'10" W	L155	523.38'	S 10°00'00" W	L205	702.52'	S 89°26'46" W	L255	6.74'	N 53°00'00" E
S 00°02'18" E	L156	192.06'	S 27°30'00" W	L206	255.59'	S 45°33'46" W	L256	261.06'	S 33°00'00" E
S 89°46'06" W	L157	231.00'	S 14°55'00" E	L207	59.96'	N 00°33'14" W	L257	10.66'	S 00°00'00" E
S 03°00'00" E	L158	188.10'	S 58°50'00" E	L208	480.00'	S 89°26'46" W	L258	0.00'	S 00°00'00" E

IFICATE

AM A PROFESSIONAL LAND
 ACCORDANCE WITH TITLE 58,
 AND PROFESSIONAL LAND

EPARED UNDER MY DIRECTION IN
 IDED BY THE OFFICE OF THE
 STANCE SHOULD THIS PLAT AND
 TERPRETED AS REPRESENTING AN
 SURVEY CONDUCTED BY ME IN
 UTAH CODE. FURTHERMORE, THE
 NO ATTEMPT TO RECONCILE OR
 PARATE BASIS OF BEARINGS AND
 RDED ANNEXATION PLATS FOR

[Signature]

 YOR (SEE SEAL BELOW)

WASATCH COUNTY, UTAH, HEREBY
 DEVELOPMENT AND RENEWAL
 LAT, PURSUANT TO UTAH CODE

ST *Brad Wilson*

 CLERK-RECORDER
 (SEE SEAL BELOW)

ED *[Signature]*

 CITY ENGINEER

NT
Y

LINE	LENGTH	BEARING
L251	502.60'	N 13°03'31" W
L252	144.46'	NORTH
L253	333.23'	S 25°33'43" E
L254	84.33'	S 37°23'31" E
L255	6.74'	N 53°43'50" E
L256	261.06'	S 33°32'01" E
L257	10.66'	S 00°58'48" E

BEGINNING AT A POINT WHICH IS SOUTH 89°20'05" WEST 700.91 FEET ALONG THE

THENCE ALONG THE BOUNDARY OF THE ZENGER ANNEXATION THE FOLLOWING FIFTY
 SOUTH 79°54'19" WEST 231.00 FEET; (6) SOUTH 27°39'19" WEST 374.41 FEET; (7)
 132.84 FEET; (12) NORTH 57°29'29" EAST 16.49 FEET; (13) NORTH 38°53'56" E
 FEET; (18) NORTH 77°56'45" EAST 46.80 FEET; (19) SOUTH 77°04'59" EAST 79
 FEET); (21) NORTH 52°33'29" EAST 71.83 FEET; (22) NORTH 45°26'02" EAST 91
 (27) NORTH 00°17'08" WEST 291.80 FEET; (28) NORTH 87°35'13" EAST 51.33 FE
 NORTH 87°02'01" EAST 99.25 FEET; (34) NORTH 86°41'09" EAST 99.12 FEET; (35)
 60°23'31" EAST 60.03 FEET; (40) SOUTH 60°32'44" EAST 69.85 FEET; (41) SOU
 71°44'36" EAST 129.27 FEET; (46) SOUTH 74°47'35" EAST 130.89 FEET; (47) SO

THENCE ALONG THE BOUNDARY OF THE SCOTT WHIMPEY ANNEXATION THE FOLLOW
 FEET; (5) NORTH 22°18'42" WEST 196.98 FEET; (6) NORTH 89°23'54" EAST 128.

THENCE ALONG THE BOUNDARY OF THE REMUND ANNEXATION THE FOLLOWING FIVE
 (5) SOUTH 01°08'08" EAST 3.40 FEET;

THENCE ALONG THE BOUNDARY OF THE DUTCH HOLLOW ANNEXATION THE FOLLOWI
 78.35 FEET; (5) SOUTH 54°51'49" EAST 15.18 FEET; (6) SOUTH 75°51'23" EAST
 SOUTH 13°48'53" EAST 90.75 FEET; (12) SOUTH 11°46'47" EAST 202.51 FEET; (13)
 00°16'45" EAST 141.32 FEET;

THENCE ALONG THE BOUNDARY OF THE KAM KOHLER ANNEXATION THE FOLLOWING
 (CENTRAL ANGLE OF 20°29'56" AND A CHORD BEARING SOUTH 19°18'28" EAST 238
 RADIUS CURVE TO THE RIGHT 1038.21 FEET (CENTRAL ANGLE OF 51°27'38" AND A
 (CENTRAL ANGLE OF 89°46'15" AND A CHORD BEARING SOUTH 44°46'15" WEST 77.

THENCE ALONG THE 1885 ORIGINAL MIDWAY CITY LIMITS SOUTH 00°06'47" EAST 14.

THENCE ALONG THE BOUNDARY OF THE 808 RIVER ROAD ANNEXATION THE FOLLO
 (5) SOUTH 34°10'48" EAST 172.21 FEET; (6) SOUTH 01°50'45" WEST 130.02 FEET;
 39°02'51" EAST 80.16 FEET; (12) SOUTH 35°12'43" EAST 203.18 FEET; (13) SOU
 WEST 218.16 FEET; (18) SOUTH 00°10'10" EAST 21.05 FEET; (19) NORTH 58°19'11
 61.85 FEET; (24) NORTH 00°10'10" WEST 421.74 FEET; (25) SOUTH 89°46'06" W

THENCE ALONG THE BOUNDARY OF THE RALPH HALL ANNEXATION THE FOLLOWING

THENCE ALONG THE 1885 ORIGINAL MIDWAY CITY LIMITS THE FOLLOWING THREE (3)

THENCE ALONG THE BOUNDARY OF THE JOHNSON'S MILL ANNEXATION THE FOLLO
 150.48 FEET; (5) SOUTH 89°47'29" EAST 376.87 FEET; (6) SOUTH 204.49 FEET;
 07°05'14" EAST 43.40 FEET; (12) SOUTH 24°23'18" WEST 29.80 FEET; (13) SOU

THENCE ALONG THE BOUNDARY OF THE HAMLET PUD ANNEXATION THE FOLLOWING
 ANGLE OF 06°05'46" AND A CHORD BEARING SOUTH 36°35'13" EAST 157.68 FEET);
 88°21'08" WEST 26.66 FEET; (9) SOUTH 79°17'08" WEST 105.77 FEET; (10) SOU
 EAST 447.65 FEET; (15) NORTH 03°00'00" WEST 36.39 FEET;

THENCE ALONG THE 1885 ORIGINAL MIDWAY CITY LIMITS SOUTH 89°54'33" WEST 19.

THENCE ALONG THE BOUNDARY OF THE FOX DEN ROAD ANNEXATION THE FOLLO
 (CENTRAL ANGLE OF 21°35'24" AND A CHORD BEARING SOUTH 11°17'37" WEST 51.5
 BEARING SOUTH 11°31'02" WEST 41.28 FEET); (8) SOUTH 00°56'45" WEST 219.85
 (8) SOUTH 01°31'10" EAST 765.40 FEET; (9) SOUTH 89°58'32" WEST 74.72 FEET;

THENCE ALONG THE 1885 ORIGINAL MIDWAY CITY LIMITS THE FOLLOWING TWO (2) C

THENCE ALONG THE BOUNDARY OF THE ARENA ANNEXATION THE FOLLOWING TWO (2)

THENCE ALONG THE BOUNDARY OF THE SOLDIER HOLLOW MOUNTAIN ANNEXATION S

THENCE ALONG THE BOUNDARY OF THE HIGH VALLEY RANCH ANNEXATION THE FOL

THENCE ALONG THE BOUNDARY OF THE SOLDIER HOLLOW MOUNTAIN ANNEXATION TI
 77°58'24" EAST 385.12 FEET; (5) SOUTH 06°40'00" EAST 128.93 FEET; (6) SOUT
 WEST 217.80 FEET; (11) SOUTH 85°40'00" WEST 462.00 FEET; (12) SOUTH 17°20'
 16°36'00" EAST 635.03 FEET; (18) ALONG THE ARC OF A 1960.10 FOOT RADIUS C
 55.16 FEET; (21) NORTH 00°17'18" WEST 1394.92 FEET; (22) NORTH 89°27'19" W
 263.40 FEET; (27) NORTH 61°55'16" WEST 263.40; (28) NORTH 54°57'10" WEST 4
 (33) NORTH 01°53'20" WEST 205.90 FEET; (34) NORTH 01°50'05" WEST 622.81 FE

THENCE ALONG THE BOUNDARY OF THE WASATCH MOUNTAIN DEVELOPMENT ANNEXA
 NORTH 58°56'07" WEST 288.53 FEET; (7) SOUTH 00°56'15" EAST 327.04 FEET; (11)
 177.68 FEET; (13) NORTH 89°59'24" WEST 269.00 FEET; (14) NORTH 00°08'05" W
 00°08'05" WEST 63.30 FEET; (20) NORTH 89°51'55" EAST 1320.00 FEET; (21) NORT
 89°27'11" EAST 110.19 FEET; (26) NORTH 41°08'04" EAST 10.75 FEET; (27) NORT

THENCE THENCE ALONG THE BOUNDARY OF THE SOLDIER HOLLOW MOUNTAIN ANNEX

THENCE ALONG THE 1885 ORIGINAL MIDWAY CITY LIMITS THE FOLLOWING TWO (2) C

THENCE ALONG THE BOUNDARY OF THE KOHLER ANNEXATION THE FOLLOWING NINETE
 FEET; (5) NORTH 00°33'14" WEST 59.96 FEET; (6) SOUTH 89°26'46" WEST 480.00
 NORTH 00°33'14" WEST 59.96 FEET; (6) SOUTH 89°26'46" WEST 480.00

BOUNDARY DESCRIPTION

ALONG THE SECTION LINE FROM THE NORTHWEST CORNER OF SECTION 26, TOWNSHIP 3 SOUTH, RANGE 4 EAST, SALT LAKE BASE & MERIDIAN

FIFTY (50) CALLS: (1) NORTH 00°20'41" WEST 3.92 FEET; (2) NORTH 01°48'43" WEST 259.92 FEET; (3) NORTH 82°04'13" WEST 111.65 FEET; (4) NORTH 71°56'00" WEST 616.25 FEET; (5) NORTH 13.54 FEET; (6) NORTH 57°28'01" EAST 111.65 FEET; (7) NORTH 42°08'56" EAST 38.07 FEET; (8) NORTH 24°29'22" EAST 235.00 FEET; (9) NORTH 17°00'31" EAST 657.86 FEET; (10) NORTH 79.51 FEET; (11) ALONG THE ARC OF A 150.00 FOOT RADIUS CURVE TO THE LEFT 131.84 FEET (CENTRAL ANGLE OF 50°21'32"); (12) NORTH 83°24'41" EAST 99.13 FEET; (13) NORTH 52°45'41" WEST 22.18 FEET; (14) NORTH 47°54'01" EAST 226.50 FEET; (15) SOUTH 83°24'41" EAST 101.33 FEET; (16) NORTH 87°01'48" EAST 111.17 FEET; (17) NORTH 87°20'22" EAST 112.71 FEET; (18) NORTH 88°02'09" EAST 101.33 FEET; (19) NORTH 87°10'15" EAST 350.71 FEET; (20) NORTH 08°29'38" WEST 43.25 FEET; (21) NORTH 87°27'20" EAST 62.08 FEET; (22) SOUTH 56°00'54" EAST 199.49 FEET; (23) SOUTH 67°46'44" EAST 153.22 FEET; (24) SOUTH 67°36'37" EAST 129.45 FEET; (25) SOUTH 20°26'25" WEST 88.71 FEET; (26) SOUTH 74°20'40" EAST 129.90 FEET; (27) SOUTH 79°36'33" EAST 64.80 FEET; (28) SOUTH 79°36'33" EAST 64.80 FEET; (29) SOUTH 79°36'33" EAST 64.80 FEET; (30) SOUTH 79°36'33" EAST 64.80 FEET; (31) SOUTH 79°36'33" EAST 64.80 FEET; (32) SOUTH 79°36'33" EAST 64.80 FEET; (33) SOUTH 79°36'33" EAST 64.80 FEET; (34) SOUTH 79°36'33" EAST 64.80 FEET; (35) SOUTH 79°36'33" EAST 64.80 FEET; (36) SOUTH 79°36'33" EAST 64.80 FEET; (37) SOUTH 79°36'33" EAST 64.80 FEET; (38) SOUTH 79°36'33" EAST 64.80 FEET; (39) SOUTH 79°36'33" EAST 64.80 FEET; (40) SOUTH 79°36'33" EAST 64.80 FEET; (41) SOUTH 79°36'33" EAST 64.80 FEET; (42) SOUTH 79°36'33" EAST 64.80 FEET; (43) SOUTH 79°36'33" EAST 64.80 FEET; (44) SOUTH 79°36'33" EAST 64.80 FEET; (45) SOUTH 79°36'33" EAST 64.80 FEET; (46) SOUTH 79°36'33" EAST 64.80 FEET; (47) SOUTH 79°36'33" EAST 64.80 FEET; (48) SOUTH 79°36'33" EAST 64.80 FEET; (49) SOUTH 79°36'33" EAST 64.80 FEET; (50) SOUTH 79°36'33" EAST 64.80 FEET;

FOLLOWING SEVEN (7) CALLS: (1) NORTH 84°09'59" EAST 197.10 FEET; (2) SOUTH 00°53'17" WEST 10.00 FEET; (3) NORTH 84°09'59" EAST 197.10 FEET; (4) SOUTH 00°53'17" WEST 10.00 FEET; (5) NORTH 84°09'59" EAST 197.10 FEET; (6) SOUTH 00°53'17" WEST 10.00 FEET; (7) SOUTH 00°53'17" WEST 10.00 FEET;

FOLLOWING FIVE (5) CALLS: (1) NORTH 89°24'42" EAST 1092.67 FEET; (2) NORTH 00°05'01" EAST 133.42 FEET; (3) SOUTH 70°24'45" EAST 1429.73 FEET; (4) NORTH 89°24'42" EAST 1092.67 FEET; (5) NORTH 00°05'01" EAST 133.42 FEET;

FOLLOWING SEVENTEEN (17) CALLS: (1) SOUTH 74°32'43" EAST 36.49 FEET; (2) SOUTH 80°52'41" EAST 41.83 FEET; (3) SOUTH 74°32'43" EAST 36.49 FEET; (4) SOUTH 80°52'41" EAST 41.83 FEET; (5) SOUTH 74°32'43" EAST 36.49 FEET; (6) SOUTH 80°52'41" EAST 41.83 FEET; (7) SOUTH 74°32'43" EAST 36.49 FEET; (8) SOUTH 80°52'41" EAST 41.83 FEET; (9) SOUTH 74°32'43" EAST 36.49 FEET; (10) SOUTH 80°52'41" EAST 41.83 FEET; (11) SOUTH 74°32'43" EAST 36.49 FEET; (12) SOUTH 80°52'41" EAST 41.83 FEET; (13) SOUTH 74°32'43" EAST 36.49 FEET; (14) SOUTH 80°52'41" EAST 41.83 FEET; (15) SOUTH 74°32'43" EAST 36.49 FEET; (16) SOUTH 80°52'41" EAST 41.83 FEET; (17) SOUTH 74°32'43" EAST 36.49 FEET;

FOLLOWING TEN (10) CALLS: (1) NORTH 80°56'30" EAST 10.47 FEET; (2) SOUTH 09°03'30" EAST 276.88 FEET; (3) ALONG THE ARC OF A 150.00 FOOT RADIUS CURVE TO THE LEFT 131.84 FEET (CENTRAL ANGLE OF 50°21'32"); (4) SOUTH 29°33'26" EAST 779.59 FEET; (5) SOUTH 40°20'06" WEST 1313.71 FEET; (6) SOUTH 38°11'44" WEST 774.54 FEET; (7) SOUTH 29°33'26" EAST 779.59 FEET; (8) SOUTH 40°20'06" WEST 1313.71 FEET; (9) SOUTH 38°11'44" WEST 774.54 FEET; (10) SOUTH 29°33'26" EAST 779.59 FEET;

EAST 1429.73 FEET;

FOLLOWING TWENTY FIVE (25) CALLS: (1) NORTH 89°46'06" EAST 660.86 FEET; (2) NORTH 00°02'18" WEST 396.39 FEET; (3) SOUTH 10°37'48" WEST 157.26 FEET; (4) SOUTH 82°59'15" WEST 152.04 FEET; (5) SOUTH 29°30'28" WEST 188.44 FEET; (6) SOUTH 04°28'15" EAST 160.69 FEET; (7) SOUTH 53°55'42" WEST 111.63 FEET; (8) SOUTH 64°04'20" WEST 126.68 FEET; (9) SOUTH 58°19'10" WEST 126.70 FEET; (10) NORTH 34°31'10" WEST 101.40 FEET; (11) NORTH 10°16'10" WEST 94.00 FEET; (12) NORTH 46°06" WEST 2059.68 FEET;

FOLLOWING TWO (2) CALLS: (1) SOUTH 00°02'18" EAST 293.20 FEET; (2) SOUTH 89°46'06" WEST 339.08 FEET;

FOLLOWING THREE (3) CALLS: (1) SOUTH 00°06'47" EAST 2775.76 FEET; (2) NORTH 89°48'58" EAST 2015.18 FEET; (3) SOUTH 03°00'00" EAST 1975.65 FEET;

FOLLOWING SEVENTEEN (17) CALLS: (1) SOUTH 89°47'29" EAST 17.75 FEET; (2) NORTH 00°12'31" EAST 171.43 FEET; (3) NORTH 00°12'31" EAST 171.43 FEET; (4) SOUTH 19°50'51" EAST 104.25 FEET; (5) SOUTH 88°11'00" EAST 57.30 FEET; (6) SOUTH 09°30'09" EAST 358.50 FEET; (7) SOUTH 47°44'14" WEST 35.20 FEET; (8) NORTH 88°51'35" WEST 30.60 FEET; (9) NORTH 27.80 FEET; (10) WEST 217.80 FEET; (11) SOUTH 47°44'14" WEST 35.20 FEET; (12) NORTH 88°51'35" WEST 30.60 FEET; (13) NORTH 27.80 FEET; (14) WEST 217.80 FEET; (15) SOUTH 47°44'14" WEST 35.20 FEET; (16) NORTH 88°51'35" WEST 30.60 FEET; (17) NORTH 27.80 FEET;

FOLLOWING FIFTEEN (15) CALLS: (1) SOUTH 850.32 FEET; (2) SOUTH 33°32'30" EAST 408.64 FEET; (3) ALONG THE ARC OF A 142.50 FOOT RADIUS CURVE TO THE LEFT 42.49 FEET (CENTRAL ANGLE OF 02°27'55"); (4) SOUTH 22°52'31" WEST 214.73 FEET; (5) SOUTH 33°54'05" WEST 219.26 FEET; (6) SOUTH 38°48'43" WEST 179.68 FEET; (7) SOUTH 66°43'16" WEST 132.39 FEET; (8) SOUTH 88°39'05" WEST 88.88 FEET; (9) SOUTH 87°23'03" WEST 126.31 FEET; (10) SOUTH 66°43'16" WEST 132.39 FEET; (11) SOUTH 88°39'05" WEST 88.88 FEET; (12) SOUTH 87°23'03" WEST 126.31 FEET; (13) SOUTH 66°43'16" WEST 132.39 FEET; (14) SOUTH 88°39'05" WEST 88.88 FEET; (15) SOUTH 87°23'03" WEST 126.31 FEET;

WEST 1975.65 FEET;

FOLLOWING NINE (9) CALLS: (1) SOUTH 00°02'34" EAST 67.68 FEET; (2) SOUTH 00°29'55" WEST 27.81 FEET; (3) ALONG THE ARC OF A 112.50 FOOT RADIUS CURVE TO THE LEFT 42.49 FEET (CENTRAL ANGLE OF 02°27'55"); (4) SOUTH 22°05'19" WEST 114.48 FEET; (5) ALONG THE ARC OF A 112.50 FOOT RADIUS CURVE TO THE LEFT 42.49 FEET (CENTRAL ANGLE OF 02°27'55"); (6) SOUTH 22°05'19" WEST 114.48 FEET; (7) ALONG THE ARC OF A 987.50 FOOT RADIUS CURVE TO THE LEFT 42.49 FEET (CENTRAL ANGLE OF 02°27'55"); (8) SOUTH 22°05'19" WEST 114.48 FEET; (9) ALONG THE ARC OF A 987.50 FOOT RADIUS CURVE TO THE LEFT 42.49 FEET (CENTRAL ANGLE OF 02°27'55");

FOLLOWING TWO (2) CALLS: (1) SOUTH 00°16'57" EAST 15.32 FEET; (2) SOUTH 89°49'45" WEST 2733.68 FEET;

FOLLOWING TWO (2) CALLS: (1) SOUTH 04°56'47" EAST 364.24 FEET; (2) WEST 0.31 FEET;

EXAMINATION SOUTH 04°56'47" EAST 465.62 FEET;

ON THE FOLLOWING THREE (3) CALLS: (1) EAST 0.30 FEET; (2) SOUTH 00°19'01" EAST 940.62 FEET; (3) WEST 0.31 FEET;

EXAMINATION THE FOLLOWING THIRTY FOUR (34) CALLS: (1) SOUTH 00°17'19" EAST 1534.36 FEET; (2) NORTH 88°05'17" EAST 398.01 FEET; (3) SOUTH 10°00'00" WEST 523.38 FEET; (4) SOUTH 27°30'00" WEST 192.06 FEET; (5) SOUTH 14°55'00" EAST 231.00 FEET; (6) SOUTH 10°00'00" WEST 523.38 FEET; (7) SOUTH 27°30'00" WEST 192.06 FEET; (8) SOUTH 14°55'00" EAST 231.00 FEET; (9) SOUTH 10°00'00" WEST 523.38 FEET; (10) SOUTH 27°30'00" WEST 192.06 FEET; (11) SOUTH 14°55'00" EAST 231.00 FEET; (12) SOUTH 10°00'00" WEST 523.38 FEET; (13) SOUTH 08°00'00" EAST 430.98 FEET; (14) NORTH 89°12'00" WEST 26.29 FEET; (15) SOUTH 17°20'00" EAST 284.00 FEET; (16) SOUTH 08°00'00" EAST 430.98 FEET; (17) NORTH 89°12'00" WEST 26.29 FEET; (18) SOUTH 17°20'00" EAST 284.00 FEET; (19) ALONG THE ARC OF A 16°49'21" AND A CHORD BEARING NORTH 86°42'19" WEST 573.44 FEET; (20) SOUTH 39°27'19" WEST 434.88 FEET; (21) NORTH 89°06'17" WEST 351.27 FEET; (22) NORTH 89°10'30" WEST 635.34 FEET; (23) NORTH 39°27'19" WEST 434.88 FEET; (24) NORTH 89°06'17" WEST 351.27 FEET; (25) NORTH 89°10'30" WEST 635.34 FEET; (26) NORTH 39°27'19" WEST 434.88 FEET; (27) NORTH 89°06'17" WEST 351.27 FEET; (28) NORTH 89°10'30" WEST 635.34 FEET; (29) NORTH 39°27'19" WEST 434.88 FEET; (30) NORTH 89°06'17" WEST 351.27 FEET; (31) NORTH 89°10'30" WEST 635.34 FEET; (32) NORTH 39°27'19" WEST 434.88 FEET; (33) NORTH 89°06'17" WEST 351.27 FEET; (34) NORTH 89°10'30" WEST 635.34 FEET;

ON THE ANNEXATION THE FOLLOWING TWENTY EIGHT (28) CALLS: (1) NORTH 2.94 FEET; (2) WEST 257.81 FEET; (3) SOUTH 32.00 FEET; (4) WEST 454.98 FEET; (5) NORTH 89°32'07" WEST 944.35 FEET; (6) SOUTH 89°29'02" WEST 714.18 FEET; (7) SOUTH 00°08'05" WEST 781.46 FEET; (8) NORTH 10°57'27" EAST 28.04 FEET; (9) NORTH 19°49'24" EAST 18.36 FEET; (10) NORTH 00°08'05" WEST 781.46 FEET; (11) NORTH 10°57'27" EAST 28.04 FEET; (12) NORTH 19°49'24" EAST 18.36 FEET; (13) NORTH 00°08'05" WEST 781.46 FEET; (14) NORTH 10°57'27" EAST 28.04 FEET; (15) NORTH 19°49'24" EAST 18.36 FEET; (16) NORTH 00°08'05" WEST 781.46 FEET; (17) NORTH 10°57'27" EAST 28.04 FEET; (18) NORTH 19°49'24" EAST 18.36 FEET; (19) NORTH 00°08'05" WEST 781.46 FEET; (20) NORTH 10°57'27" EAST 28.04 FEET; (21) NORTH 19°49'24" EAST 18.36 FEET; (22) NORTH 00°08'05" WEST 781.46 FEET; (23) NORTH 10°57'27" EAST 28.04 FEET; (24) NORTH 19°49'24" EAST 18.36 FEET; (25) NORTH 00°08'05" WEST 781.46 FEET; (26) NORTH 10°57'27" EAST 28.04 FEET; (27) NORTH 19°49'24" EAST 18.36 FEET; (28) NORTH 00°08'05" WEST 781.46 FEET;

ON THE ANNEXATION NORTH 00°24'22" WEST 1271.73 FEET;

FOLLOWING TWO (2) CALLS: (1) SOUTH 89°49'45" WEST 2597.37 FEET; (2) NORTH 00°26'51" WEST 3992.08 FEET;

FOLLOWING NINETEEN (19) CALLS: (1) SOUTH 89°26'46" WEST 702.52 FEET; (2) NORTH 00°33'14" WEST 1000.00 FEET; (3) SOUTH 89°26'46" WEST 702.52 FEET; (4) NORTH 00°33'14" WEST 1000.00 FEET; (5) SOUTH 89°26'46" WEST 702.52 FEET; (6) NORTH 00°33'14" WEST 1000.00 FEET; (7) SOUTH 89°26'46" WEST 702.52 FEET; (8) NORTH 00°33'14" WEST 1000.00 FEET; (9) SOUTH 89°26'46" WEST 702.52 FEET; (10) NORTH 00°33'14" WEST 1000.00 FEET; (11) SOUTH 89°26'46" WEST 702.52 FEET; (12) NORTH 00°33'14" WEST 1000.00 FEET; (13) SOUTH 89°26'46" WEST 702.52 FEET; (14) NORTH 00°33'14" WEST 1000.00 FEET; (15) SOUTH 89°26'46" WEST 702.52 FEET; (16) NORTH 00°33'14" WEST 1000.00 FEET; (17) SOUTH 89°26'46" WEST 702.52 FEET; (18) NORTH 00°33'14" WEST 1000.00 FEET; (19) SOUTH 89°26'46" WEST 702.52 FEET;

DN

3 SOUTH, RANGE 4 EAST, SALT LAKE BASE & MERIDIAN.

'43" WEST 259.92 FEET; (3) NORTH 82°04'13" WEST 542.29 FEET; (4) NORTH 81°50'41" WEST 147.18 FEET; (5) NORTH 57°28'01" EAST 111.65 FEET; (10) NORTH 76°31'03" EAST 121.73 FEET; (11) NORTH 88°21'03" EAST 17°00'31" EAST 657.66 FEET; (16) NORTH 42°06'42" EAST 53.67 FEET; (17) NORTH 71°48'38" EAST 44.49 THE LEFT 131.84 FEET (CENTRAL ANGLE OF 50°21'32" AND A CHORD BEARING NORTH 77°44'15" EAST 127.64 1'01" EAST 226.50 FEET; (25) SOUTH 83°24'41" EAST 69.57 FEET; (26) NORTH 78°55'13" EAST 60.05 FEET; EAST 112.71 FEET; (31) NORTH 88°02'09" EAST 103.28 FEET; (32) NORTH 86°44'49" EAST 104.87 FEET; (33) 3.25 FEET; (37) NORTH 87°27'20" EAST 62.08 FEET; (38) SOUTH 65°16'58" EAST 101.85 FEET; (39) SOUTH FEET; (43) SOUTH 67°36'37" EAST 129.45 FEET; (44) SOUTH 73°50'55" EAST 131.14 FEET; (45) SOUTH FEET; (49) SOUTH 79°36'33" EAST 64.80 FEET; (50) SOUTH 00°05'32" EAST 487.69 FEET;

OUTH 00°53'17" WEST 10.00 FEET; (3) NORTH 84°09'19" EAST 238.13 FEET; (4) NORTH 02°52'36" EAST 464.41

'05'01" EAST 133.42 FEET; (3) SOUTH 70°24'45" EAST 335.17 FEET; (4) SOUTH 75°27'48" EAST 381.69 FEET;

2) SOUTH 80°52'41" EAST 41.83 FEET; (3) SOUTH 75°39'56" EAST 98.15 FEET; (4) SOUTH 73°58'53" EAST 58°43" EAST 9.38 FEET; (8) SOUTH 76°55'29" EAST 23.40 FEET; (10) SOUTH 04°42'37" EAST 20.69 FEET; (11) 29.27 FEET; (15) SOUTH 05°19'13" EAST 52.22 FEET; (16) NORTH 88°16'31" EAST 43.04 FEET; (17) SOUTH

09°03'30" EAST 276.88 FEET; (3) ALONG THE ARC OF A 670.00 FOOT RADIUS CURVE TO THE LEFT 239.71 FEET 0°06" WEST 1313.71 FEET; (6) SOUTH 38°11'44" WEST 511.76 FEET; (7) ALONG THE ARC OF A 1155.93 FOOT 1°39'22" WEST 523.86 FEET; (9) ALONG THE ARC OF A 548.78 FOOT RADIUS CURVE TO THE LEFT 859.83 FEET

; (2) NORTH 00°02'18" WEST 396.39 FEET; (3) EAST 2456.84 FEET; (4) SOUTH 05°07'44" WEST 5.11 FEET; 152.04 FEET; (9) SOUTH 29°30'28" WEST 188.44 FEET; (10) SOUTH 01°42'28" WEST 118.10 FEET; (11) SOUTH FEET; (15) SOUTH 64°04'20" WEST 126.68 FEET; (16) SOUTH 45°57'10" WEST 56.93 FEET; (17) SOUTH 89°37'32" NORTH 10°16'10" WEST 94.00 FEET; (22) NORTH 18°25'10" WEST 66.51 FEET; (23) SOUTH 89°46'06" WEST

89°46'06" WEST 339.08 FEET;

58" EAST 2015.18 FEET; (3) SOUTH 03°00'00" EAST 27.95 FEET;

2) NORTH 00°12'31" EAST 171.43 FEET; (3) NORTH 85°12'31" EAST 198.07 FEET; (4) NORTH 42°42'31" EAST 57.30 FEET; (9) SOUTH 09°30'09" EAST 358.50 FEET; (10) SOUTH 23°00'11" EAST 331.50 FEET; (11) SOUTH T; (15) NORTH 27.80 FEET; (16) WEST 217.80 FEET; (17) SOUTH 198.09 FEET;

EAST 408.64 FEET; (3) ALONG THE ARC OF A 1482.69 FOOT RADIUS CURVE TO THE LEFT 157.75 FEET (CENTRAL 219.28 FEET; (6) SOUTH 38°48'43" WEST 179.88 FEET; (7) SOUTH 27°36'16" WEST 470.31 FEET; (8) NORTH ET; (12) SOUTH 87°23'03" WEST 126.31 FEET; (13) NORTH 27°32'18" WEST 702.31 FEET; (14) SOUTH 89°59'59"

TH 00°29'55" WEST 27.81 FEET; (3) ALONG THE ARC OF A 137.50 FOOT RADIUS CURVE TO THE RIGHT 51.81 FEET IC OF A 112.50 FOOT RADIUS CURVE TO THE LEFT 41.51 FEET (CENTRAL ANGLE OF 21°08'34" AND A CHORD LEFT 42.49 FEET (CENTRAL ANGLE OF 02°27'55" AND A CHORD BEARING SOUTH 00°17'12" EAST 42.49 FEET);

EST 2733.68 FEET;

EET;

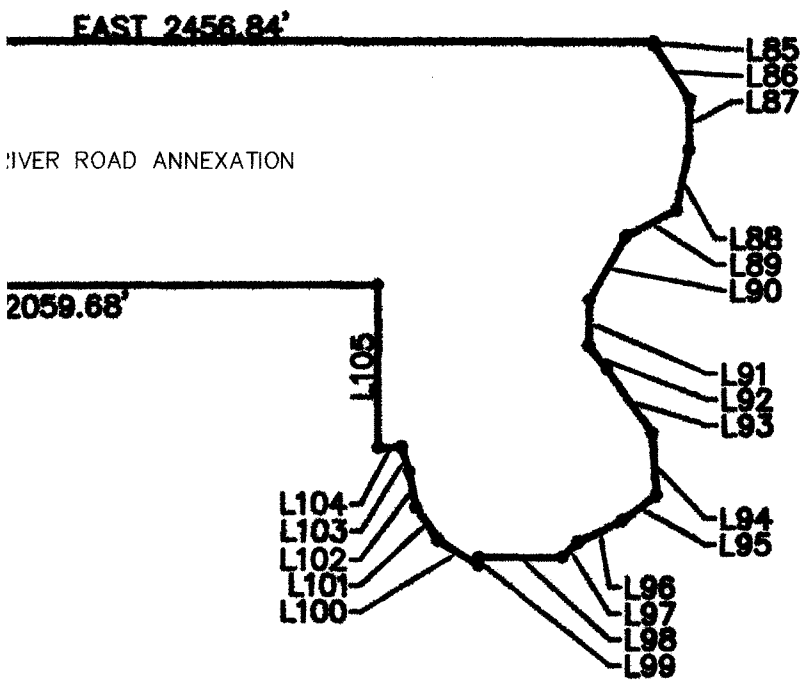
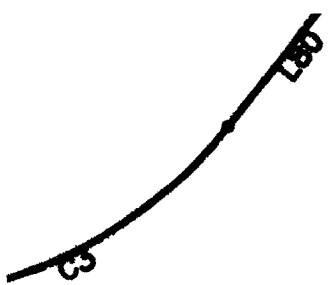
EAST 940.62 FEET; (3) WEST 0.31 FEET;

534.36 FEET; (2) NORTH 88°05'17" EAST 398.01 FEET; (3) SOUTH 82°51'30" EAST 112.52 FEET; (4) SOUTH EET; (8) SOUTH 14°55'00" EAST 231.00 FEET; (9) SOUTH 58°50'00" EAST 188.10 FEET; (10) SOUTH 02°45'00" 14) NORTH 89°12'00" WEST 28.29 FEET; (15) SOUTH 162.09 FEET; (16) EAST 193.40 FEET; (17) SOUTH CHORD BEARING NORTH 86°42'19" WEST 573.44 FEET); (19) SOUTH 84°53'00" WEST 368.15 FEET; (20) WEST RTH 89°10'30" WEST 635.34 FEET; (25) NORTH 62°12'51" WEST 99.70 FEET; (26) NORTH 61°55'16" WEST 15°53'39" WEST 48.70 FEET; (31) NORTH 05°43'59" WEST 88.57 FEET; (32) NORTH 02°04'43" WEST 183.14 FEET;

T; (2) WEST 257.81 FEET; (3) SOUTH 32.00 FEET; (4) WEST 54.00 FEET; (5) NORTH 32.00 FEET; (6) SOUTH 89°29'02" WEST 714.18 FEET; (11) SOUTH 89°19'07" WEST 148.04 FEET; (12) SOUTH 89°50'22" WEST RTH 19°49'24" EAST 18.36 FEET; (17) NORTH 00°43'35" EAST 445.08 FEET; (18) WEST 18.35 FEET; (19) NORTH FEET; (23) NORTH 06°02'00" EAST 140.13 FEET; (24) SOUTH 89°53'00" EAST 935.26 FEET; (25) NORTH ET;

* WEST 3992.08 FEET;

H 00°33'14" WEST 1000.00 FEET; (3) SOUTH 89°26'46" WEST 1066.00 FEET; (4) SOUTH 45°33'46" WEST 255.59 5" EAST 62.93 FEET; (9) SOUTH 65°23'46" WEST 264.94 FEET; (10) SOUTH 44°54'46" WEST 263.32 FEET; (11) 433.16 FEET; (15) SOUTH 00°33'14" EAST 10.00 FEET; (16) SOUTH 77°15'18" EAST 155.67 FEET; (17) NORTH



COMMUNITY DEVELOPMENT AND RENEWAL AGENCY OF MIDWAY CITY

MIDWAY CITY, WASATCH COUNTY, STATE OF UTAH

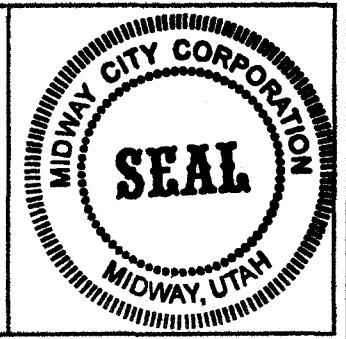
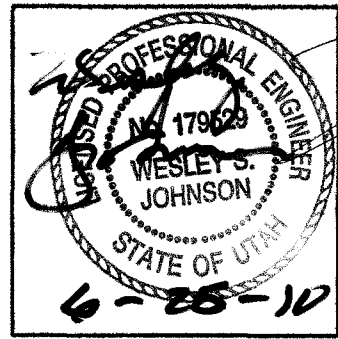
SCALE: 1" = 500 FEET

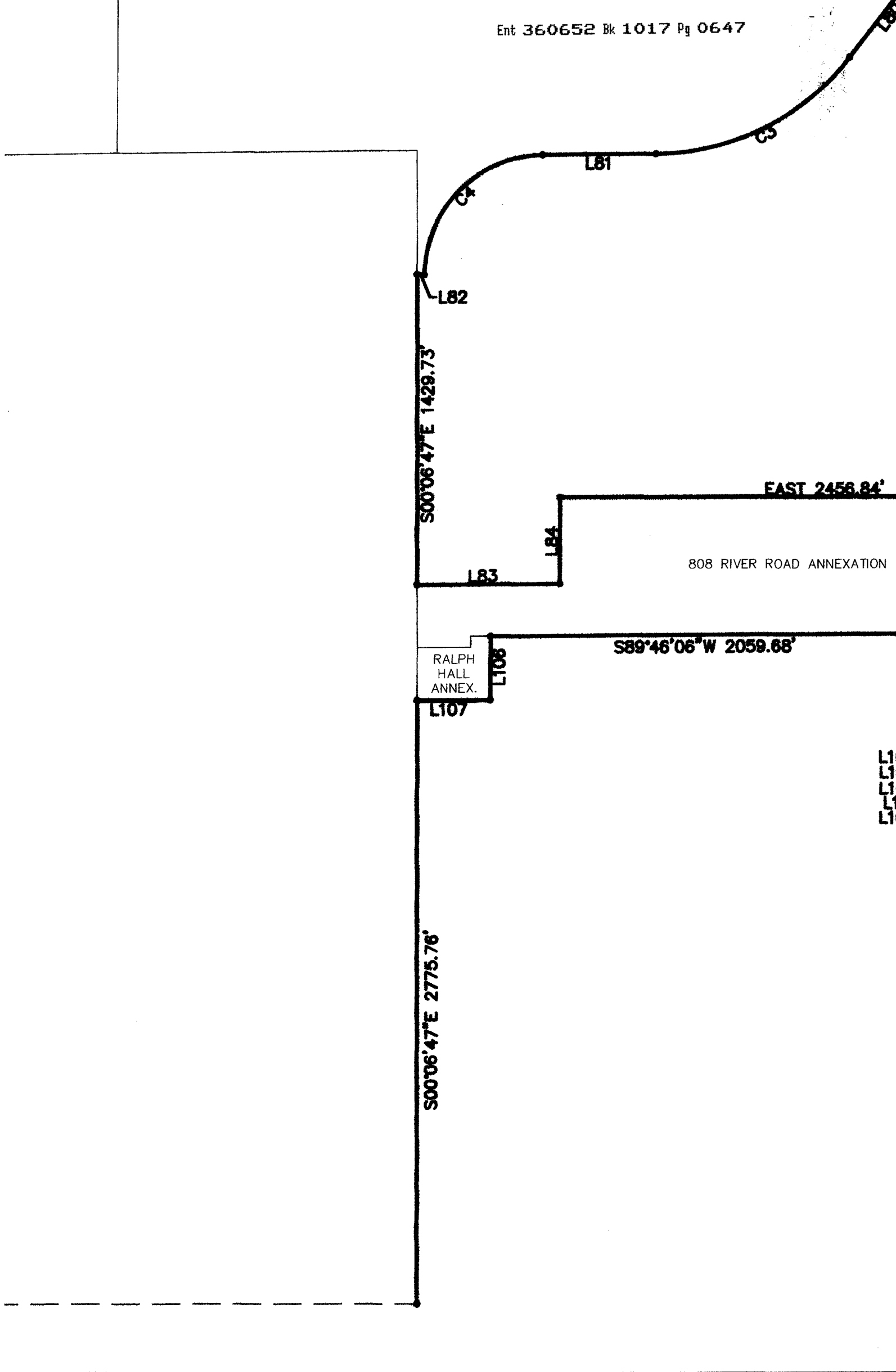
SHEET 2 OF 3

CITY ENGINEER

SURVEYOR'S SEAL

RECORDER SEAL





VARGA PARCEL
ANNEXATION

1278

1279

E
E
X.

MIDWAY CITY

ORIGINAL MIDWAY CITY LIMITS - 1885

TCH LINE SEE PLAT SHEET 3 OF 3

L200

JOHNSON ANNEXATION

Ent 360652 Bk 1017 Pg 0649

VARGA PARCEI ANNEXATION

OLSEN ANNEX.

STEVE WHITE ANNEX.

L232
L231

N00°26'51"W 1947.96'

L227
L228
L229
L230

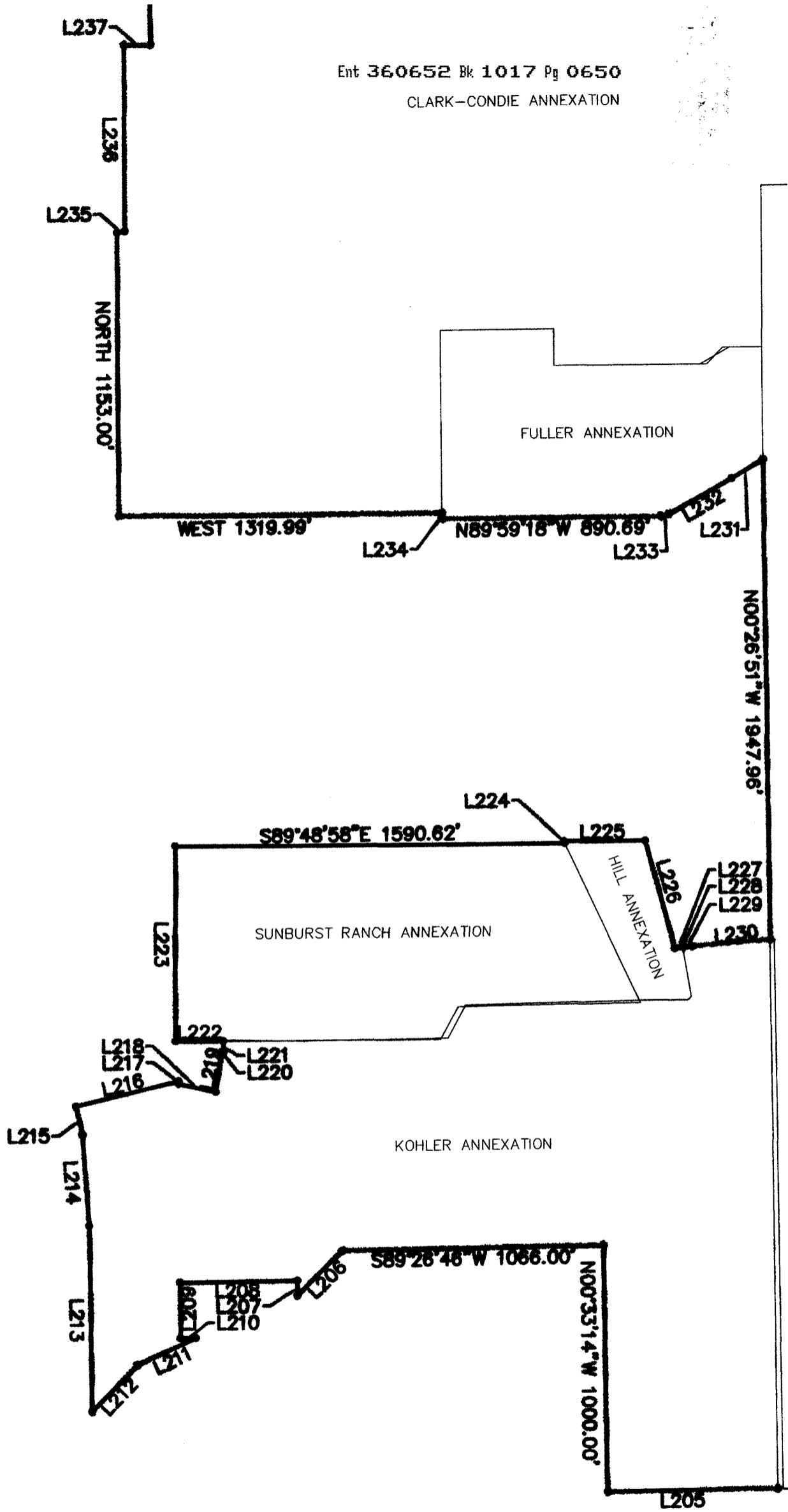
MIDV

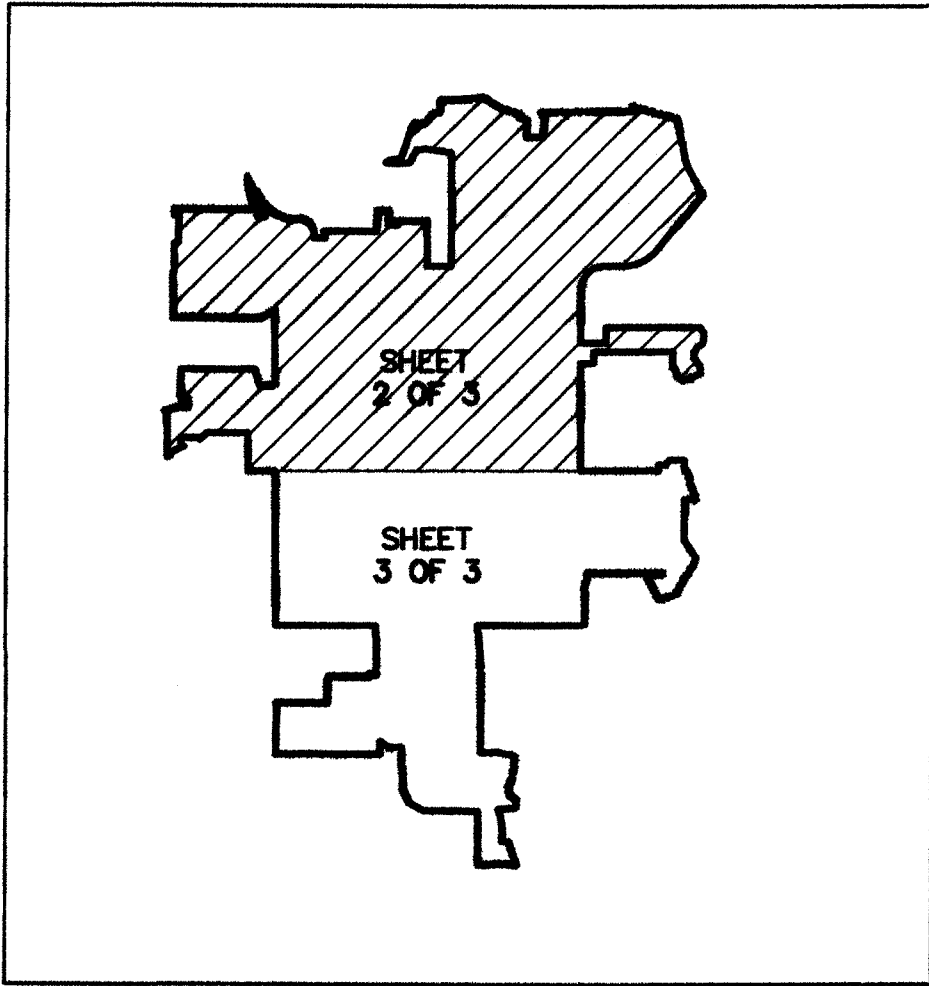
ORIGINAL M

05

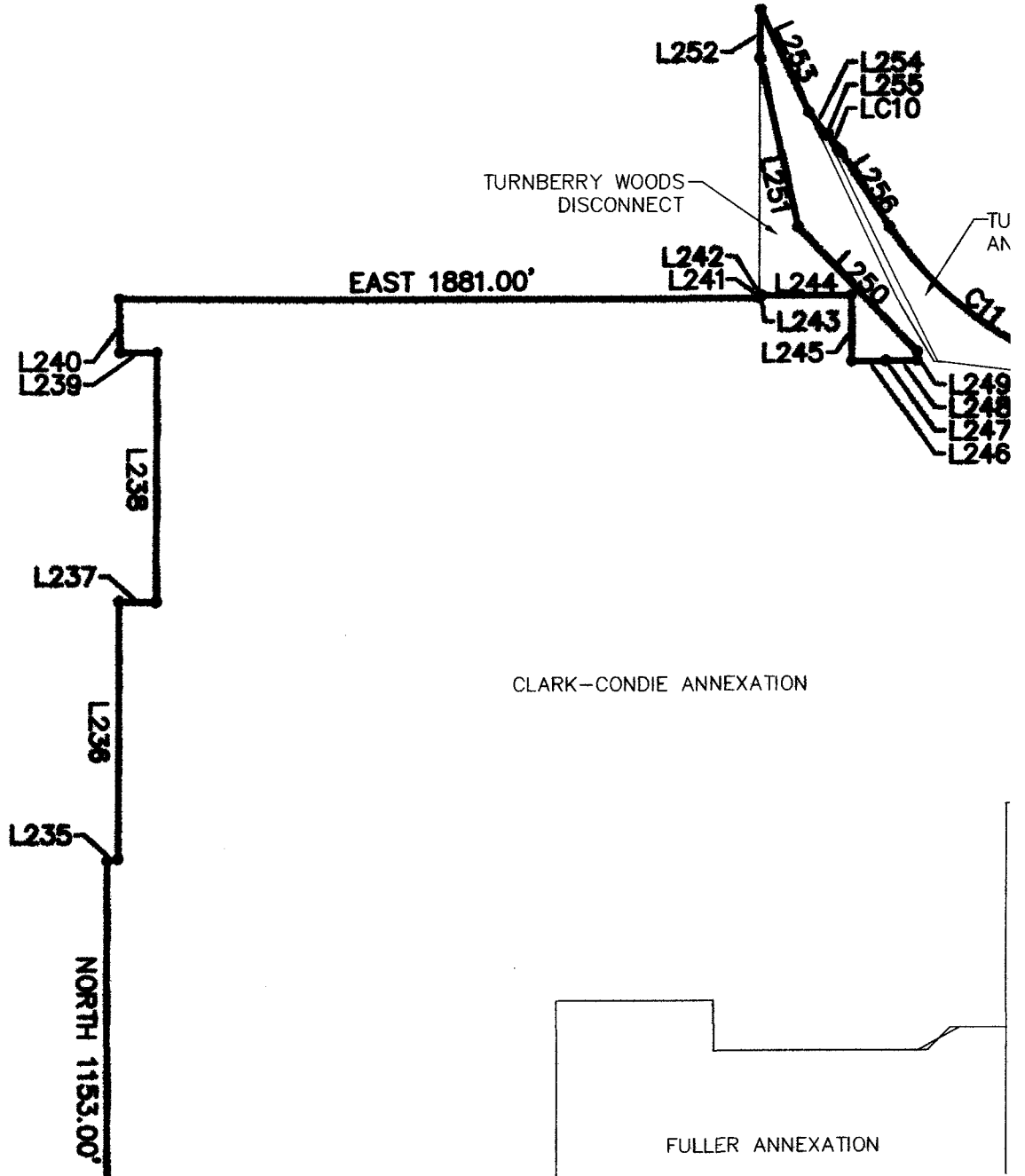
MATCH LINE SEE I

COMMUNITY DEVELOPMENT AND RENEWAL AGENCY OF MIDWAY CITY PLAT - 10 JUNE 2010



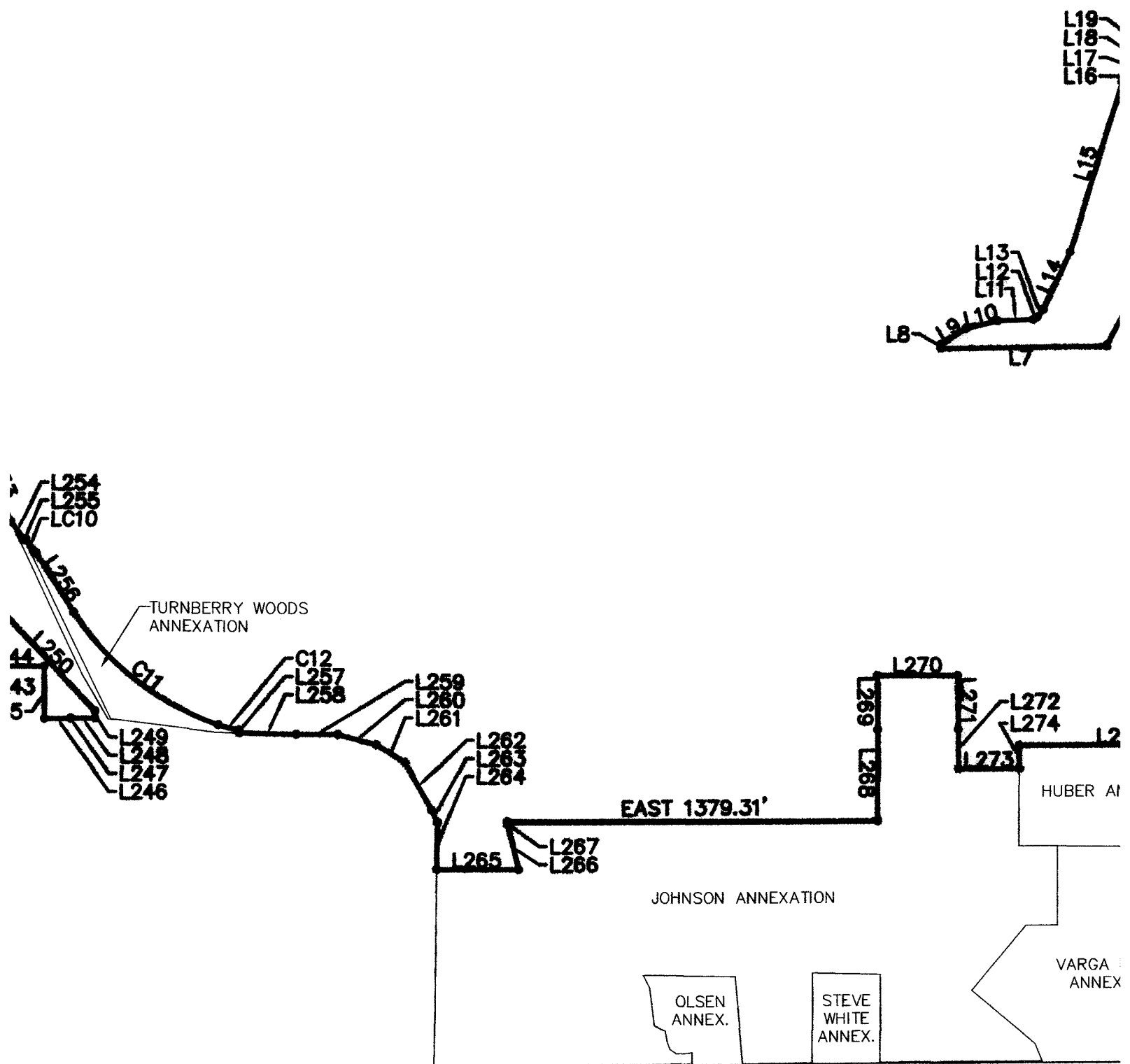


PLAT KEY

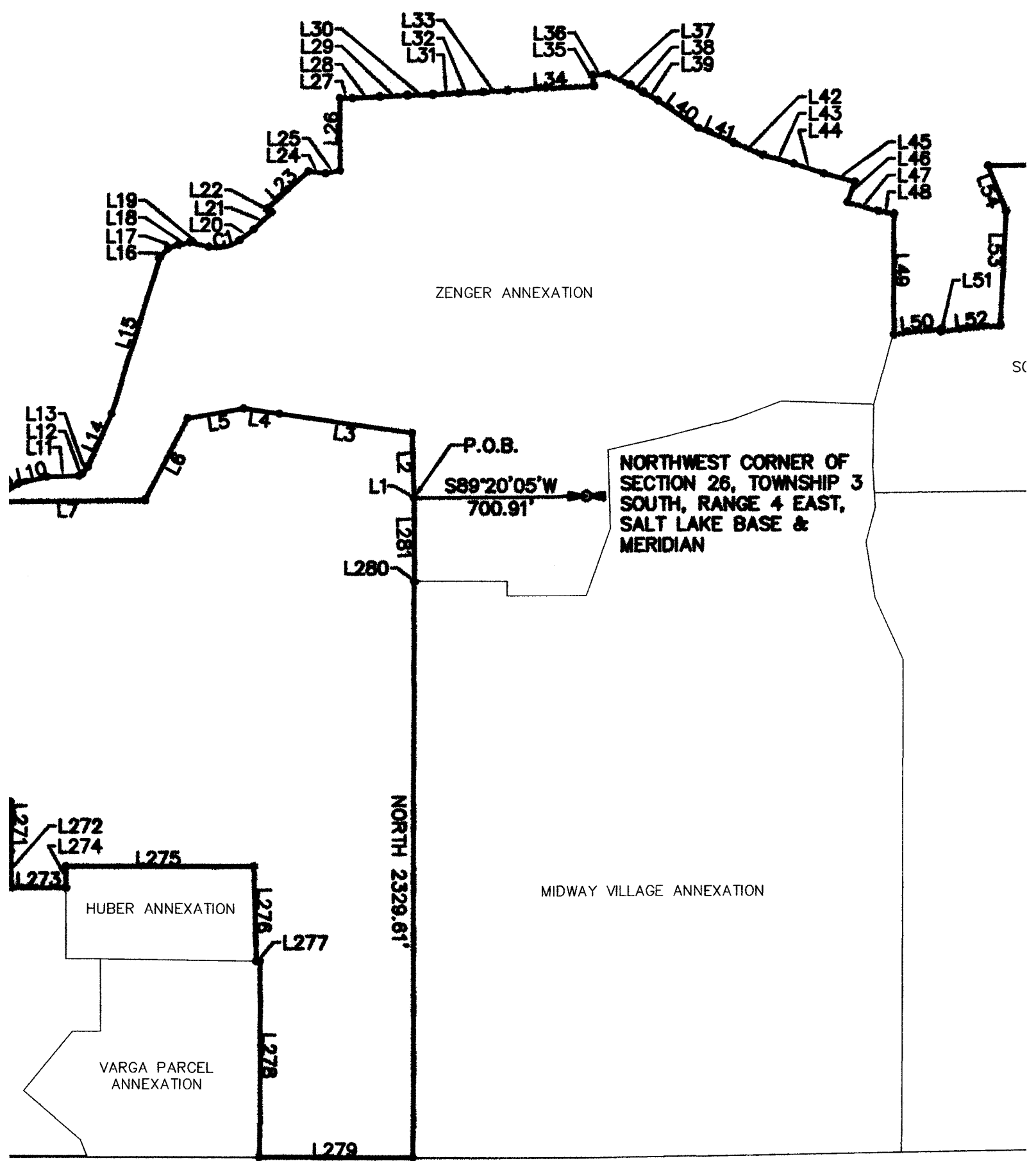


DWAY CITY PLAT - 10 JUNE 2010

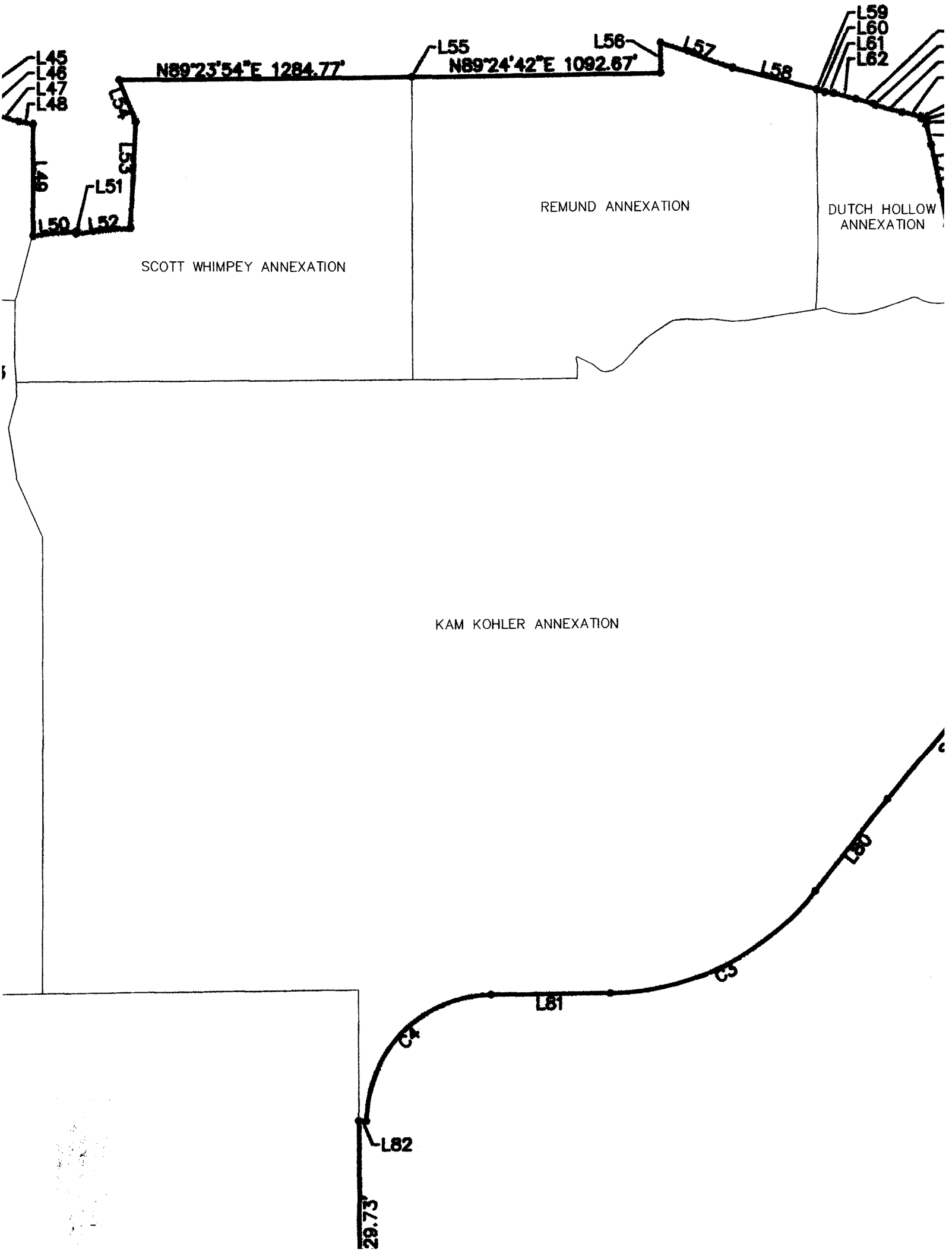
COMMUNITY DEVELOPMENT

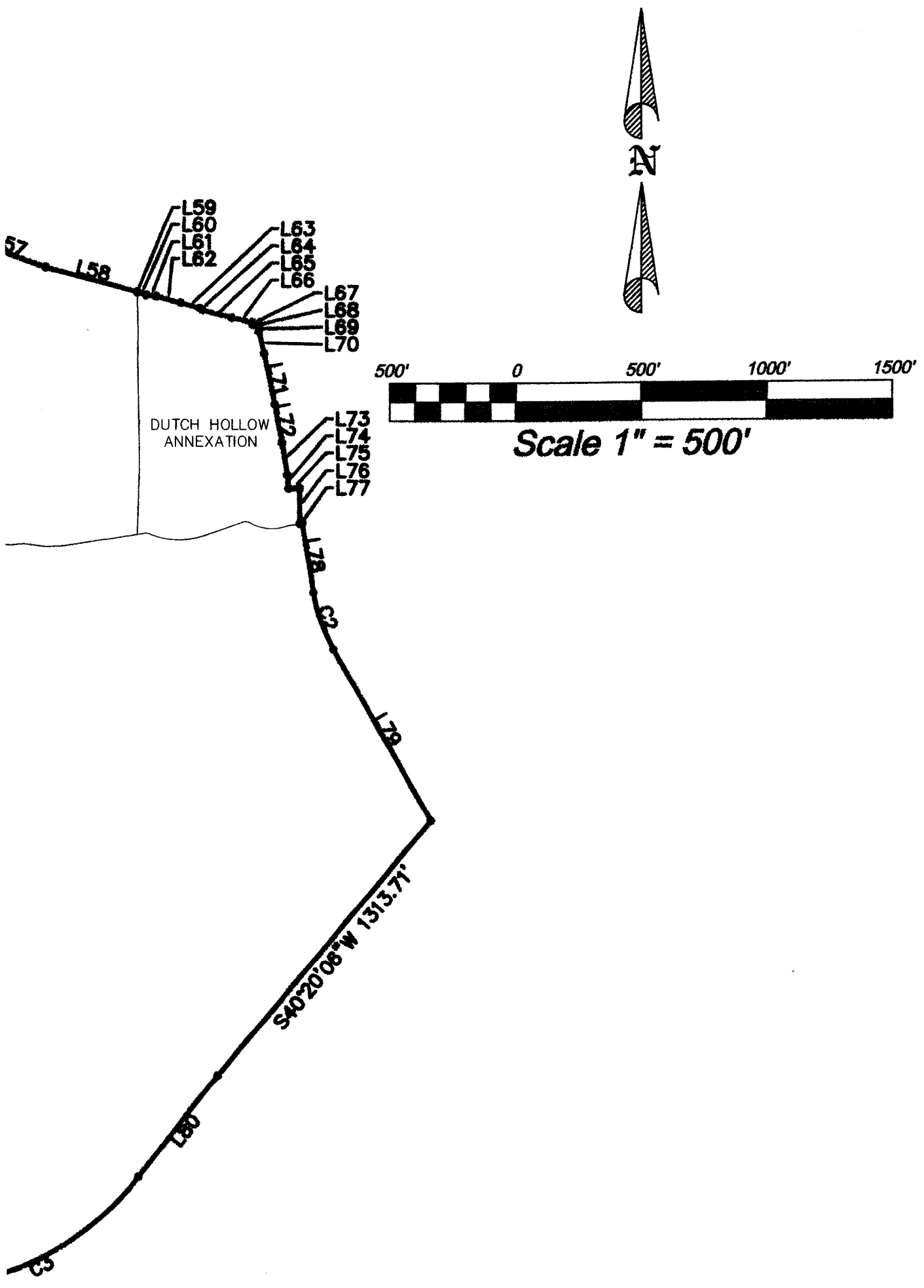


MENT AND RENEWAL AGENCY OF MI



OF MIDWAY CITY





COMMUNITY DEVELOPMENT AND RENEWAL AGENCY OF MIDWAY CITY

MIDWAY CITY, WASATCH COUNTY, STATE OF UTAH

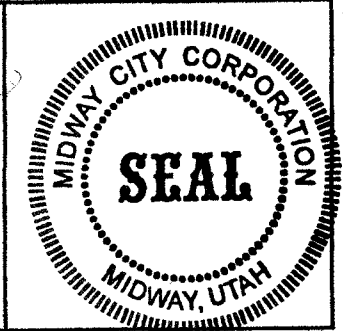
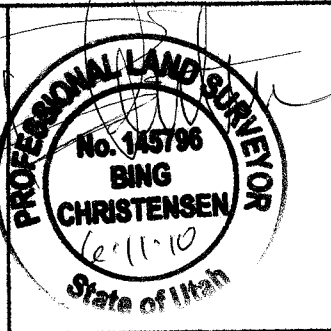
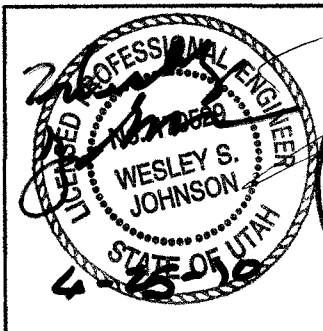
SCALE: 1" = 500 FEET

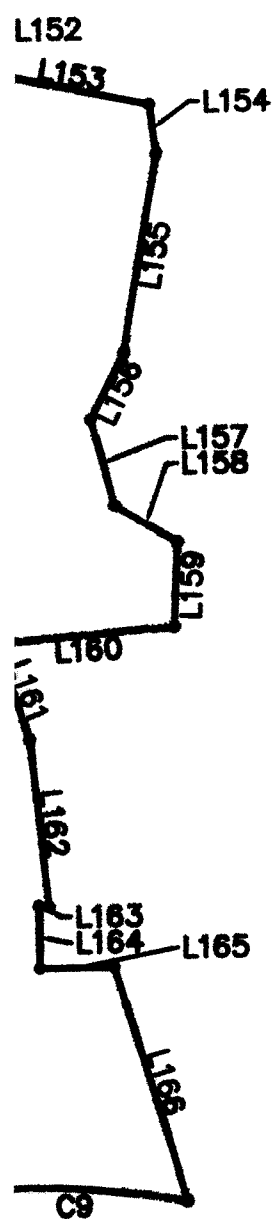
SHEET 3 OF 3

CITY ENGINEER

SURVEYOR'S SEAL

RECORDER SEAL



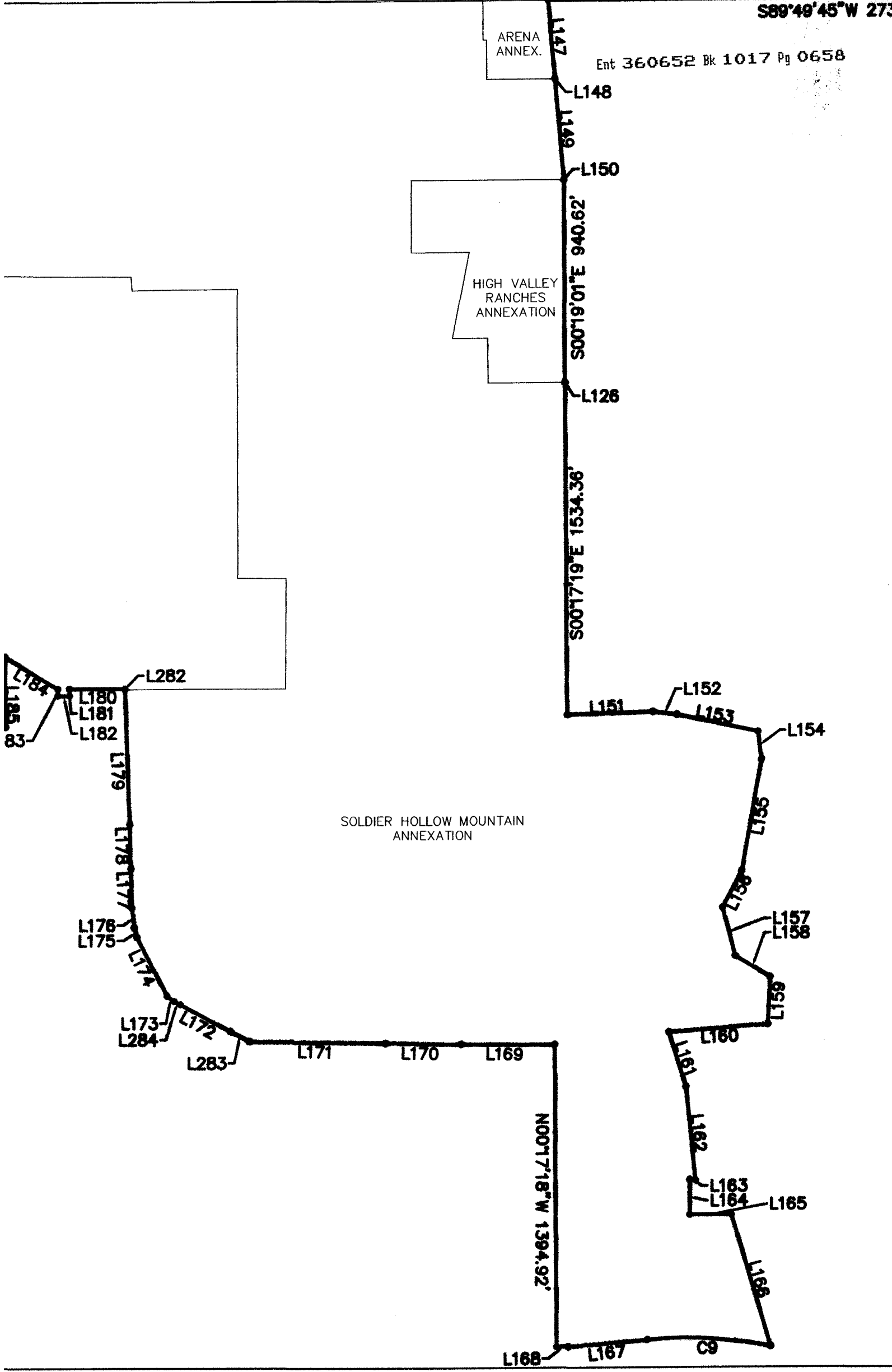


ARENA ANNEX.

Ent 360652 Bk 1017 Pg 0658

HIGH VALLEY RANCHES ANNEXATION

SOLDIER HOLLOW MOUNTAIN ANNEXATION



S89°49'45"W 2597.37'

Ent 360652 Bk 1017 Pg 0659

N00°24'22"W 1271.73'

L203
L202
L201

L204

S89°53'00"E 935.26'

L200

L199
L198

N89°51'55"E 1320.00'

L197
L196

L195

L194
L193

L192

WASATCH MOUNTAIN DEVELOPMENT
ANNEXATION

L191

L189
L190

L188

L187

L186

L183

L184
L185

L180
L181
L182

L179

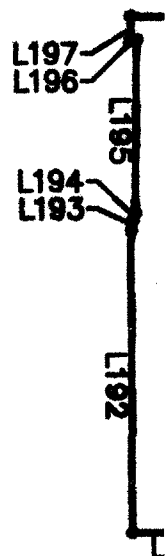
L178

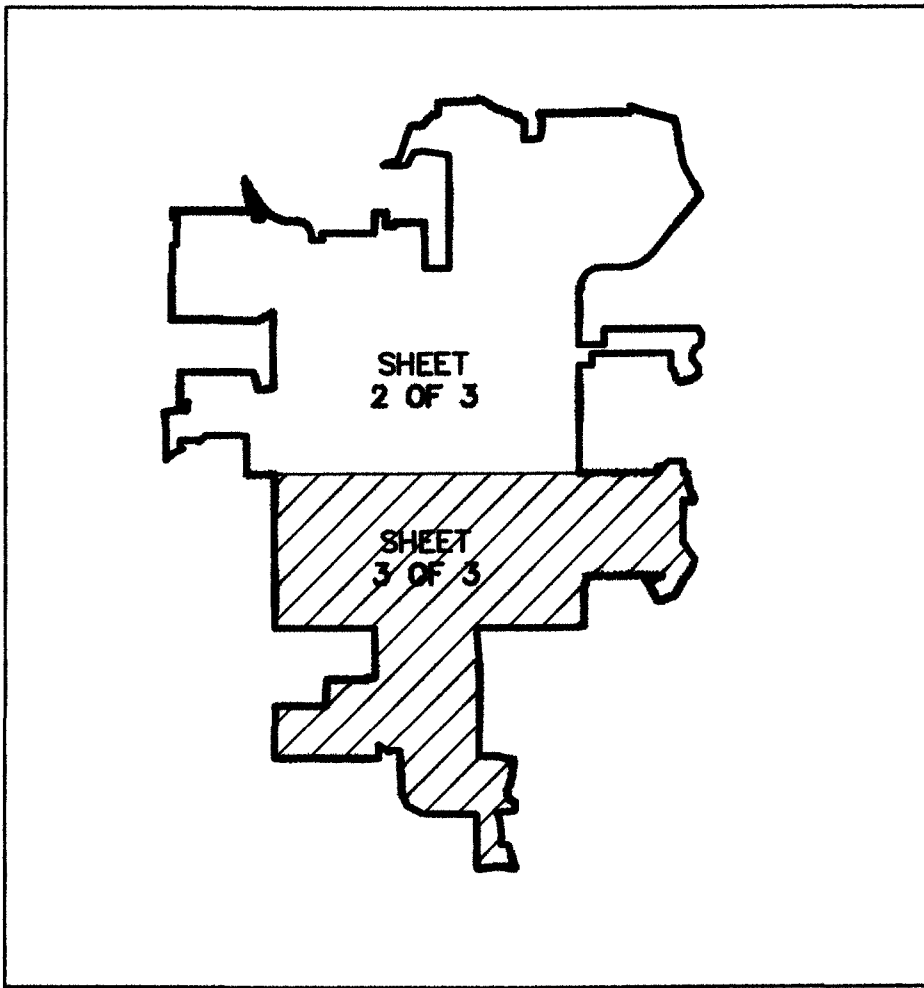
L177

L176
L175

L17
L28

COMMUNITY DEVELOPMENT AND RENEWAL AGENCY OF MIDWAY CITY PLAT - 10 JUNE 2010

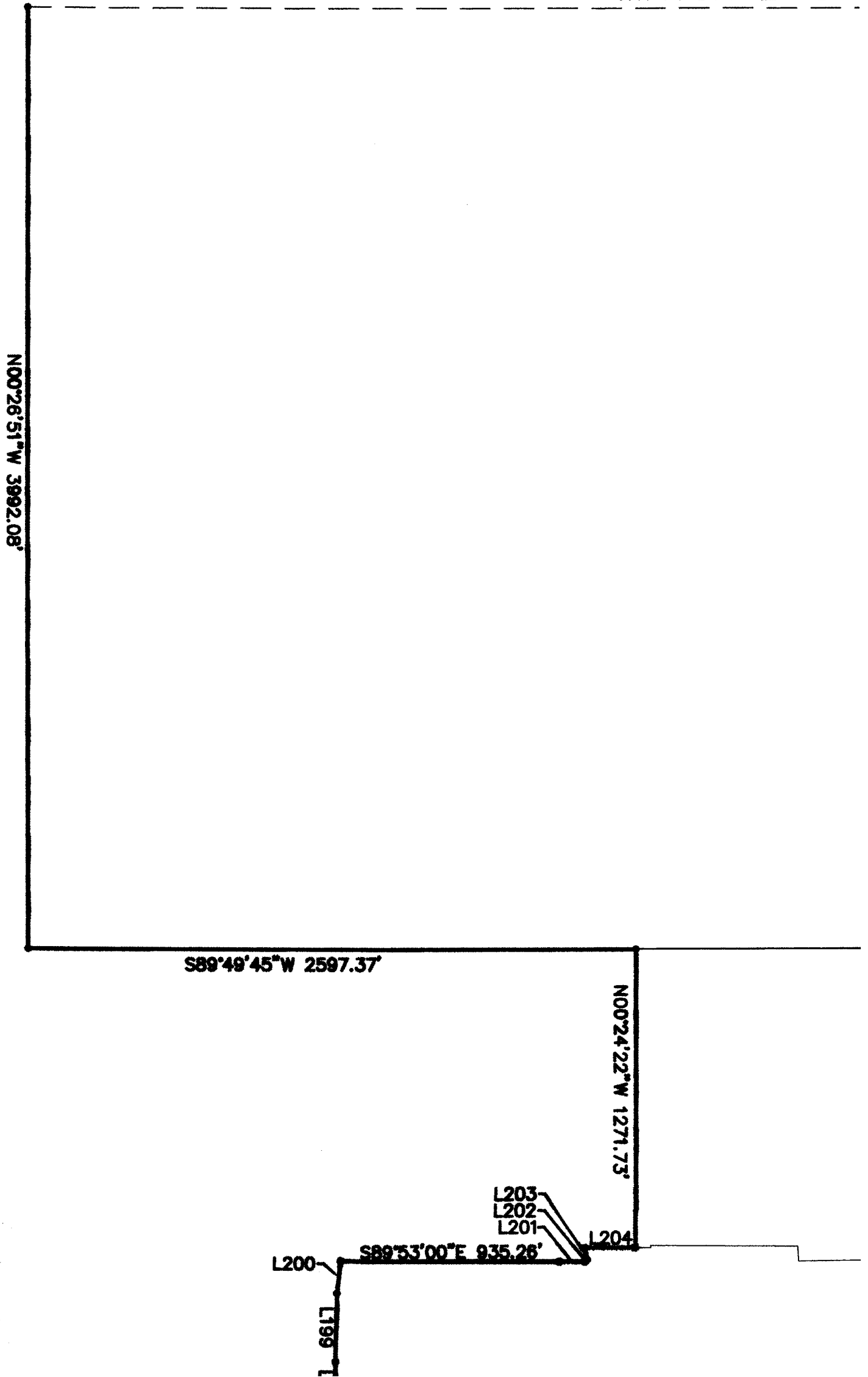




PLAT KEY

COMMUNITY DEVELOPMENT

MATCH LINE S



AND RENEWAL AGENCY OF MIDWA

SEE PLAT SHEET 2 OF 3

ORIGINAL MIDWAY CITY LIMITS - 1885

MIDWAY CITY

S89°49'45"W 2733.68'

ARENA
ANNEX.

L147

L148

L149

L150

HIGH VALLEY
RANCHES
ANNEXATION

S00°19'01"E 940.62'

MIDWAY CITY

