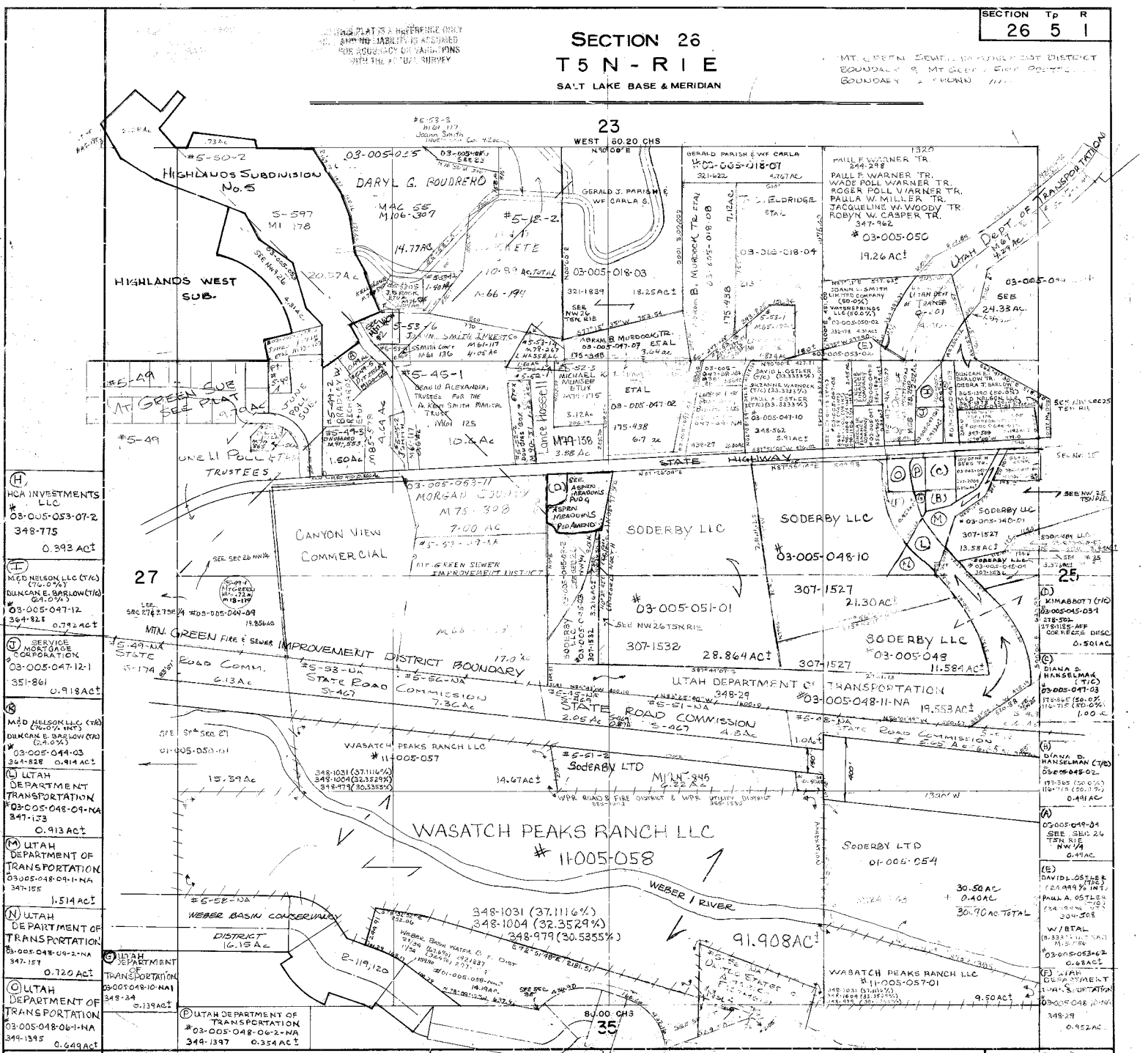


SECTION 26
T5 N - R1 E
SALT LAKE BASE & MERIDIAN

SECTION T P R
26 5 1

MT. COPEN, SEWA, WASHCREEK DISTRICT
BOUNDARY & MT. COPEN DISTRICT
BOUNDARY & MOUNTAIN



- (H) HCA INVESTMENTS LLC
03-005-053-07-2
348-775
0.393 AC
- (I) M&D NELSON, LLC (C/O)
DUNCAN E. BARLOW (C/O)
03-005-047-12
347-823
0.792 AC
- (J) SERVICE MORTGAGE CORPORATION
03-005-047-12-1
351-861
0.918 AC
- (K) M&D NELSON, LLC (C/O)
DUNCAN E. BARLOW (C/O)
03-005-044-03
347-828
0.914 AC
- (L) UTAH DEPARTMENT OF TRANSPORTATION
03-005-048-09-NA
347-153
0.913 AC
- (M) UTAH DEPARTMENT OF TRANSPORTATION
03-005-048-09-1-NA
347-155
1.514 AC
- (N) UTAH DEPARTMENT OF TRANSPORTATION
03-005-048-06-1-NA
349-1395
0.649 AC

Approved	Utah State Tax Comm	REVISIONS	DATE AND INITIAL	(In Pencil)
		1/22/82	HB	1/22/82
		1/22/82	HB	1/22/82
		1/22/82	HB	1/22/82
		1/22/82	HB	1/22/82
		1/22/82	HB	1/22/82

MORGAN COUNTY, UTAH

SCALE
ONE INCH = 400 FEET
SECTION T P R
26 5 1

Date By
Engineering Associates Inc.