

1181-5

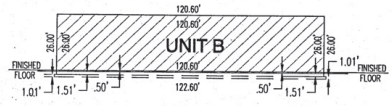
1181-5

This map is provided solely for the purpose of assisting in locating the property and Cottonwood Title Insurance Agency, Inc. assumes no liability for variation, if any, with any actual survey.

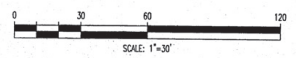
LAYTON WAREHOUSE PHASE 2 A CONDOMINIUM PROJECT

LOCATED IN THE SOUTHEAST 1/4 OF SECTION 9,
TOWNSHIP 4 NORTH, RANGE 1 WEST, SALT LAKE BASE & MERIDIAN
LAYTON CITY, DAVIS COUNTY, UTAH
PART OF LOTS 102 AND 103
SUGAR STREET COMMERCIAL
SUBDIVISION PLAT 1

2-2817



UNIT B
SECTION B-B

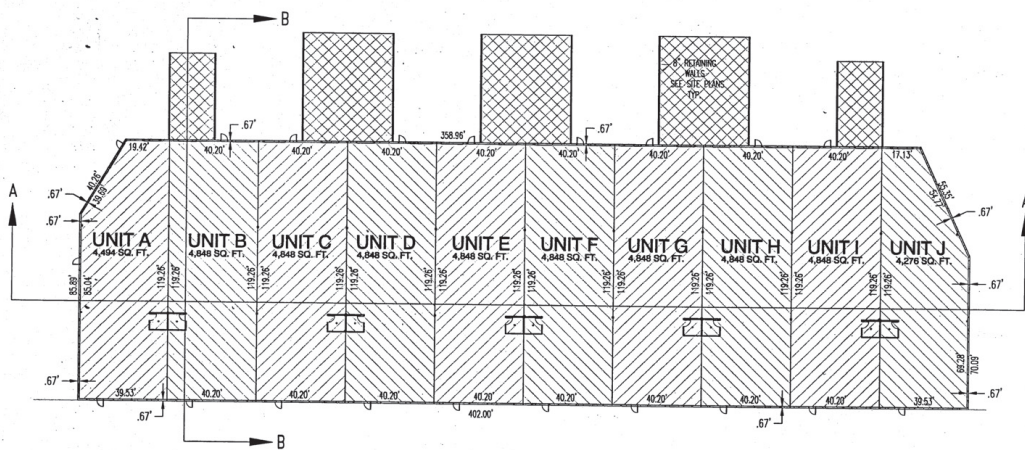


UNIT A
AIR SPACE 4,370 SQ. FT.
WALL SPACE 124 SQ. FT.
OVERALL AREA 4,494 SQ. FT.

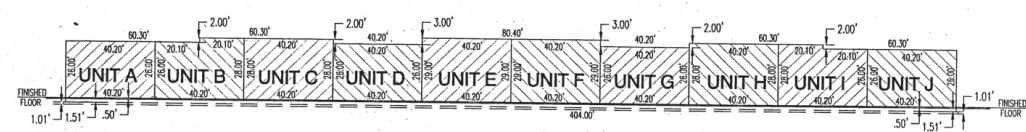
UNITS B - I
AIR SPACE 4,794 SQ. FT.
WALL SPACE 54 SQ. FT.
OVERALL AREA 4,276 SQ. FT.

UNIT J
AIR SPACE 4,155 SQ. FT.
WALL SPACE 121 SQ. FT.
OVERALL AREA 4,276 SQ. FT.

- NOTE:
- BUILDING CONSTRUCTION OF THIS PROJECT WAS COMPLETE AT THE TIME THIS RECORD OF SURVEY MAP WAS PREPARED.
 - EACH CONDOMINIUM UNIT CONTAINED WITHIN THE PROJECT IS AS SHOWN AND IS DESIGNATED BY A NUMBER. (SEE SHEETS 2 THROUGH 4)
- COMMON AREAS AND FACILITIES - [diagonal lines] COMMON AREA TO INCLUDE A CROSS ACCESS INGRESS/EGRESS EASEMENT FOR VEHICULAR TRAFFIC AND STORM DRAINAGE
- PRIVATE OWNERSHIP - [cross-hatch] [diagonal lines]
- LIMITED COMMON AREAS AND FACILITIES - [cross-hatch]
- EXTERIOR FOUNDATION OF BUILDING - [diagonal lines]
- ALL RAMPS & DOCKING AREAS, CONTAINED WITHIN THE PROJECT ARE CONSIDERED LIMITED COMMON AREAS. THEY ARE SET ASIDE AND RESERVED FOR THE USE OF THE RESPECTIVE CONDOMINIUM UNIT TO WHICH THEY ARE ATTACHED AND/OR APPURTENANT.
 - ALL OTHER AREA CONTAINED WITHIN THE PROJECT, BUT NOT SHOWN ON DIAGONAL STRIPE OR CROSS HATCHED LINES ARE CONSIDERED COMMON AREA, INCLUDING COVERED AND UNCOVERED PARKING, STORM WATER DETENTION AND DRAINAGE EASEMENT AREA.
 - DIMENSIONS ON SHEET 1 OF 1 ARE TO EXTERIOR FOUNDATION ONLY.
 - ALL COMMON AREA IS CONSIDERED TO BE AN EASEMENT FOR PUBLIC UTILITY AND DRAINAGE PURPOSES.



UNITS A - J
FLOOR PLAN



UNITS A - J
SECTION A-A

SHEET 2 OF 2

LAYTON WAREHOUSE PHASE 2

PINNACLE
Engineering & Land Surveying, Inc.
1513 North 1300th Rd., Suite #2
Layton, UT 84041 Phone: (801) 428-7271 Fax: (801) 544-0051



DAVIS COUNTY RECORDER

ENTRY NO. 2026879 FEE PAID 17.00 FILED FOR RECORD AND RECORDED THIS 28th DAY OF OCTOBER 2024 AT 12:59 PM IN BOOK 3651 OF OFFICIAL RECORDS PAGE 292

Michael Maclean
DAVIS COUNTY RECORDER

DEPUTY RECORDER

2-2817