

NINIGRET NORTH I AMENDED
 An Industrial Subdivision Amending Lots 1, 2, 3 and 4 of Ninigret North I Subdivision
 Located in the Southeast Quarter of Section 3, Township 4 North, Range 2 West,
 Salt Lake Base & Meridian
 Syracuse City, Davis County, Utah

SURVEYOR'S CERTIFICATE

I, Mark N Gregory, do hereby certify that I am a Professional Land Surveyor in the State of Utah holding certificate number 334576 as prescribed by Title 58, Chapter 22 of the Professional Engineers and Land Surveyors Licensing Act. I further certify that by the authority of the owners, I have made an accurate survey of the tract of land shown and described hereon in accordance with Section 17-23-17 of the Utah State Code, have verified all measurements shown and have subdivided said property into lots and streets hereafter to be known as **NINIGRET NORTH I AMENDED** and that the same has been surveyed and monuments have been placed on the ground as represented on this plot.

BOUNDARY DESCRIPTION
 former
 A parcel of land being part of Lots 1, 2, 3 and 4 of Ninigret North I Subdivision recorded August 27, 2012 as Entry No. 2682688 of the official records, located in the Southeast Quarter of Section 3, Township 4 North, Range 2 West, Salt Lake Base and Meridian, Syracuse City, Davis County, Utah described as follows:

BEGINNING at a point on the west line of 1000 West Street, said point being South 00°06'46" West 194.05 feet along the east line of Section 3, Township 4 North, Range 2 West, Salt Lake Base and Meridian and North 89°53'14" West 50.00 feet from the East Quarter corner of said Section 3, and thence along said west line the following three courses: 1) South 00°06'46" West 329.95 feet, 2) South 89°53'14" East 12.00 feet and 3) South 00°06'46" West 545.49 feet to the northerly line of 450 South Street and a point of tangency of a 30.00 foot radius curve to the right; thence along said line the following four courses: 1) Southwesterly 47.13 feet along said curve through a central angle of 90°00'14" and a long chord of South 45°06'53" West 42.43 feet, 2) North 89°53'00" West 660.89 feet to a point of tangency of a 30.00 foot radius curve to the right, 3) Northwesterly 25.37 feet along said curve through a central angle of 48°27'32" and a long chord of North 65°39'14" West 24.62 feet to a point of reverse curvature of a 65.00 foot radius curve to the left and 4) Southwesterly 191.69 feet along said curve through a central angle of 188°58'09" and a long chord of South 54°05'27" West 129.40 feet to the north line of Lot 5, Ninigret North I, a subdivision recorded August 27, 2012 as Entry No. 2682688 in Book 5593 at Page 1027 of the Davis County records; thence along said line the following three courses: 1) North 89°53'00" West 169.96 feet to a point of tangency of a 567.00 foot radius curve to the left, 2) Westerly 205.39 feet along said curve through a central angle of 20°45'16" and a long chord of South 79°44'22" West 204.27 feet and 3) South 69°21'44" West 364.80 feet to the east line of the property described in that certain Warranty Deed recorded November 03, 1982 as Entry No. 626040 in Book 919 at Page 699 of said records; thence along said line North 13°11'31" West 1,205.29 feet to a point on the south line of SR-193; thence along said line the following four courses: 1) North 87°59'13" East 368.47 feet to a point of tangency of a 7,842.50 foot radius curve to the right, 2) Easterly 299.69 feet along said curve through a central angle of 02°11'22" and a long chord of North 89°04'54" East 299.67 feet, 3) South 89°49'25" East 1,074.16 feet and 4) South 44°53'14" East 75.53 feet to the POINT OF BEGINNING. Said parcel contains 1,705,861 square feet or 39.16 acres, more or less.

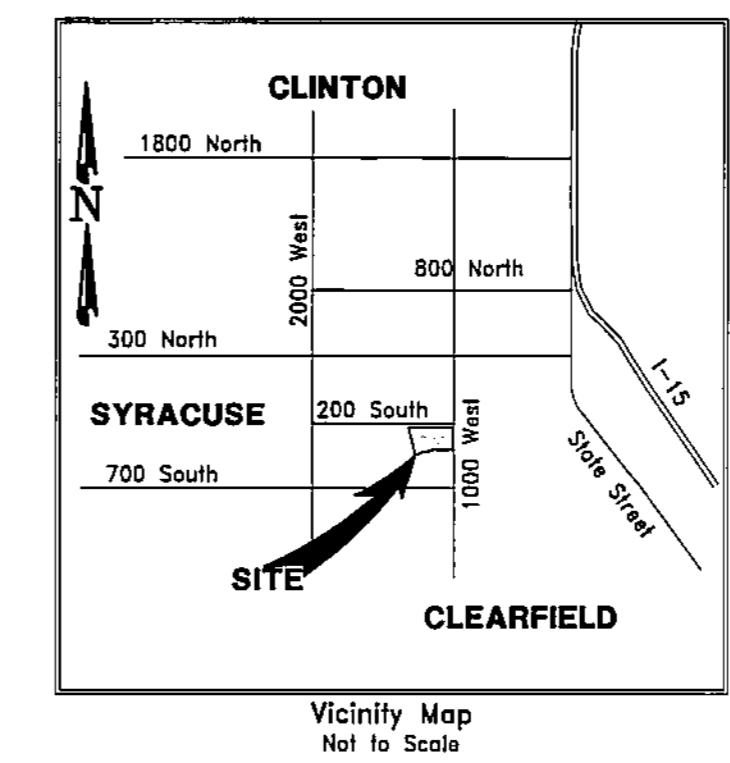
Notice to Purchasers:
 1. Each lot owner will be required to install a pressure booster pump on the secondary irrigation system to insure adequate operating pressures.

ACREAGE SUMMARY:

Gross Area	39.16 acres
1080 West Dedication	0.71 acres
350 South Dedication	1.51 acres
Net Area	36.94 acres
Area of Lots 1A-4A	36.94 acres

Date July 13, 2015

Mark N Gregory
P.L.S. No. 334576



CURVE TABLE

CURVE	RADIUS	LENGTH	DELTA	BEARING	CHORD	TANGENT
C1	30.00'	47.13'	90°00'14"	S 45°06'53" W	42.43'	30.00'
C2	30.00'	25.37'	48°27'32"	N 65°39'14" W	24.62'	13.50'
C3	65.00'	191.69'	168°58'09"	S 54°05'27" W	129.40'	673.15'
C4	30.00'	47.12'	90°00'00"	N 44°53'00" W	42.43'	30.00'
C5	30.00'	44.01'	84°02'52"	N 42°08'26" E	40.17'	27.03'
C6	30.00'	47.12'	90°00'00"	N 45°07'00" E	42.43'	30.00'
C7	30.00'	47.12'	90°00'00"	N 44°53'00" W	42.43'	30.00'
C8	65.00'	287.29'	253°14'31"	N 36°42'15" E	104.34'	87.46'
C9	25.00'	31.94'	73°12'31"	S 53°16'45" E	29.81'	18.57'
C10	30.00'	47.13'	90°00'14"	N 45°06'53" E	42.43'	30.00'
C11	30.00'	47.12'	89°59'46"	S 44°53'07" E	42.42'	30.00'
C12	65.00'	61.73'	94°24'40"	N 89°37'45" W	59.45'	33.41'
C13	65.00'	121.76'	114°53'25"	S 26°53'08" W	109.87'	101.12'

Southeast Corner Section 3,
 T.4 N., R. 2 W., S.L.B.&M.
 Found Davis County Brass Monument

NINIGRET NORTH I AMENDED
 An Industrial Subdivision Amending Lots
 1, 2, 3 and 4 of Ninigret North I Subdivision
 Located in the Southeast Quarter of Section 3, Township
 4 North, Range 2 West, Salt Lake Base & Meridian
 Syracuse City, Davis County, Utah

OWNERS DEDICATION AND CERTIFICATION

Know to all persons that this document presents, that Ninigret Construction Company North L.C., a Utah limited liability company the owner of the above described tract of land, having caused same to be subdivided into lots, hereby set apart and subdivide the same tract into lots as shown on this plot, hereafter known as Ninigret North I Amended, and do hereby dedicate for the public use all those portions of said tract of land designated as public utility easements forever, for the public access and public utility use, and warrant, defend and save the City harmless against any encumbrances on the easements, which interfere with the City's use, operation, and maintenance.

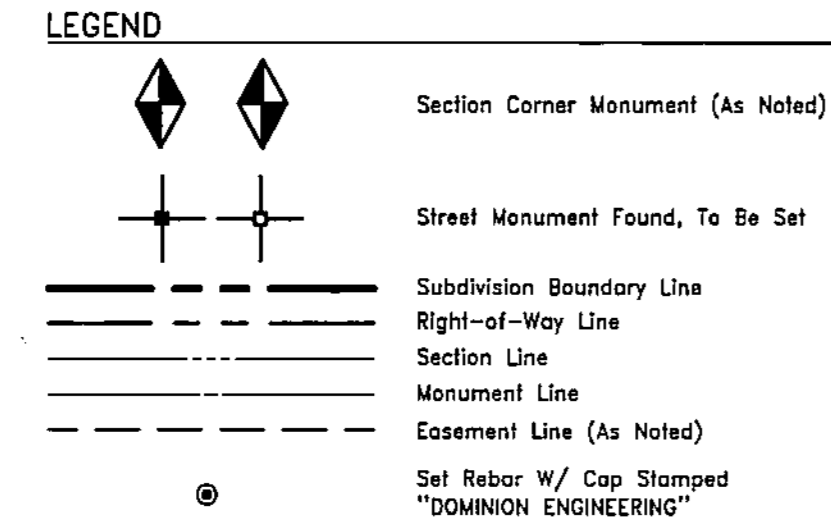
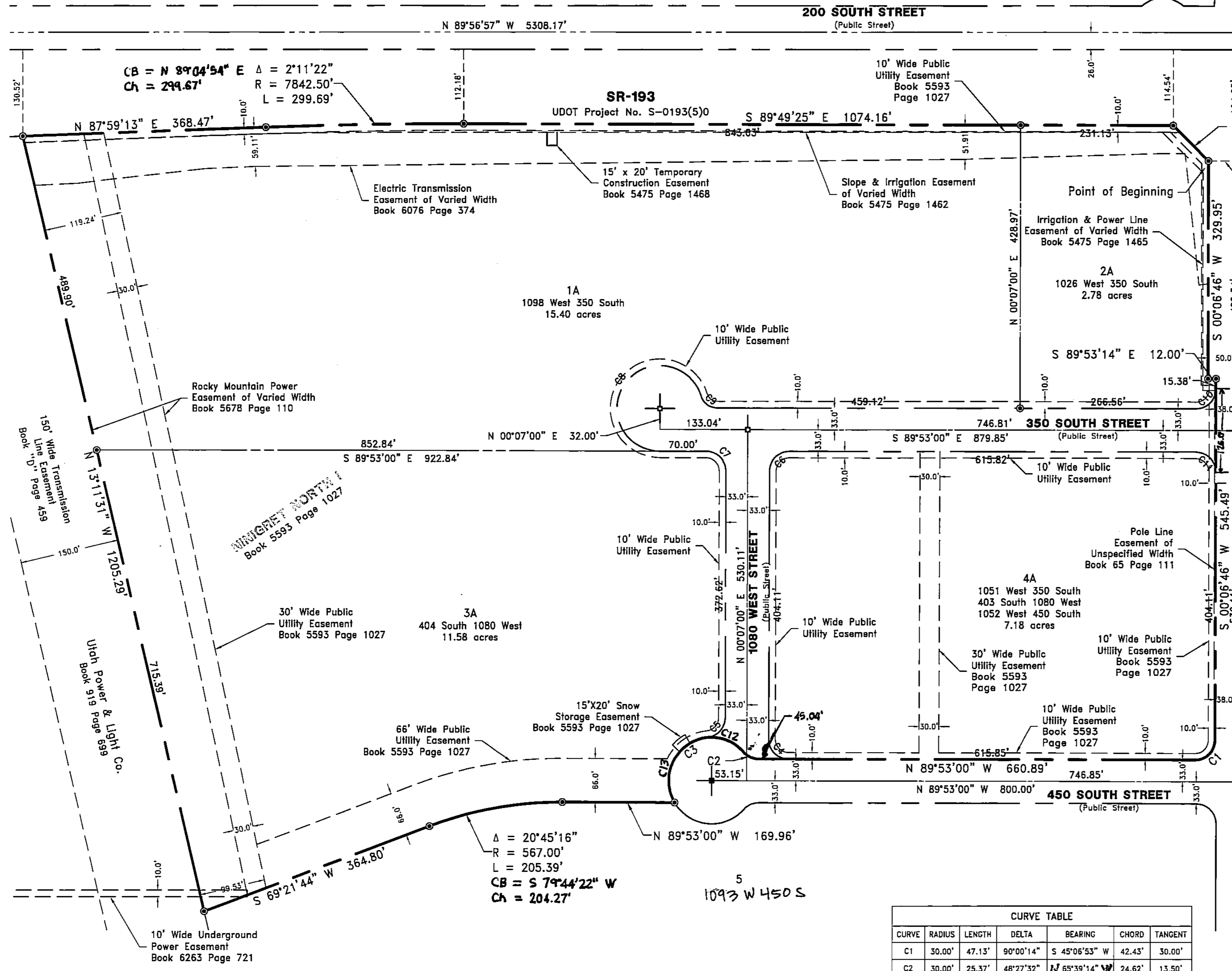
Eric Rice
 Ninigret Construction Company North L.C.

ACKNOWLEDGMENT

STATE OF UTAH }
 COUNTY OF Salt Lake } ss

On this 28th day of July, 2015 personally appeared before me, Eric Rice, the signer of the foregoing instrument, who duly acknowledged to me that (s)he is a MANAGER of Ninigret Construction Company North L.C., a Utah limited liability company, and and is authorized to execute the foregoing Agreement in its behalf and that he or she executed it in such capacity.

WITNESS my hand and official seal.
 Signature of Notary Heather Mitchell
 My Commission Expires 10/24/18
 Notary Seal



SYRACUSE CITY ATTORNEY	CENTURY LINK
Approved this <u>29th</u> day of <u>July</u> , 2015 by <u>Heather Mitchell</u> Syracuse City Attorney	Approved this <u>22nd</u> day of <u>July</u> , 2015 by <u>Eric Rice</u> CenturyLink

PREPARED BY: DOMINION Engineering Associates, L.C. 5684 South Green Street Murray, Utah 84123 801-713-3000	SUBDIVIDER: Ninigret Construction Company North L.C. 1700 South 4650 West Salt Lake City, UT 84104 (801) 973-9090	QUESTAR: Approved this <u>22</u> day of <u>July</u> , 2015 by <u>Mike Jones</u> Questar Gas	ROCKY MOUNTAIN POWER: Approved this <u>22</u> day of <u>JULY</u> , 2015 by <u>Tony Teague</u> Rocky Mountain Power	SYRACUSE CITY PLANNING COMMISSION: Approved this <u>12th</u> day of <u>AUGUST</u> , 2015 by the <u>Chairman, Syracuse City Planning Commission</u>	SYRACUSE CITY ENGINEER: I hereby certify that this office has examined this plot and it is correct in accordance with information on file in this office. <u>8-10-15</u> Syracuse City Engineer	SYRACUSE CITY COUNCIL: Presented to the Syracuse City Council this <u>20</u> day of <u>July</u> , 2015 by the Syracuse City Planning Commission. <u>T. Palmer</u> Syracuse City Mayor	DAVIS COUNTY RECORDER #: State of Utah, County of Davis, recorded and filed at the request of <u>Syracuse City</u> Date <u>8-18-2015</u> Time <u>4:08</u> Book <u>6332</u> Page <u>1361</u> Fees <u>\$34.00</u> <u>Richard Maughan</u> Davis County Recorder
----------------------------------------------------------------------------------------------------------------------------	-------------------------------------------------------------------------------------------------------------------------------	---------------------------------------------------------------------------------------------------	--------------------------------------------------------------------------------------------------------------------------	------------------------------------------------------------------------------------------------------------------------------------------------------------------	----------------------------------------------------------------------------------------------------------------------------------------------------------------------------------------------------------	------------------------------------------------------------------------------------------------------------------------------------------------------------------------------------------------	-----------------------------------------------------------------------------------------------------------------------------------------------------------------------------------------------------------------------------------------------------------------------------

5565

P:\NINIGRET - SYRACUSE 1891\PLAT 1 AMENDED\SURVEY\dwg\Plot 1 Amended.dwg