

CEDAR CREST OF ALLEN HOLLOW SUBDIVISION

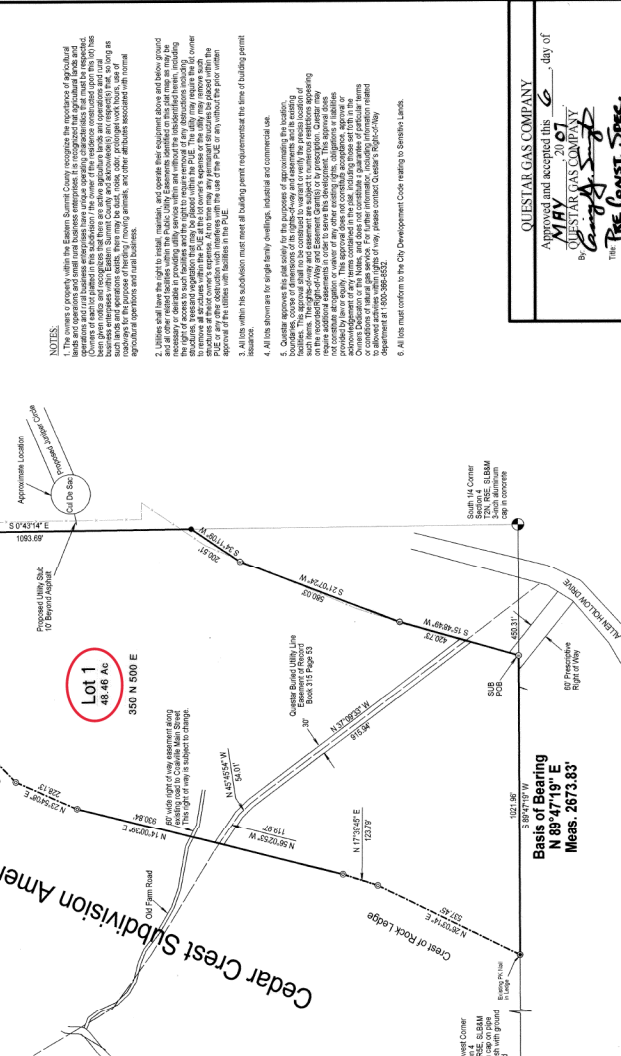
LOCATED IN THE SOUTH HALF SECTION 4, TOWNSHIP 2 NORTH, RANGE 5 EAST, SALT LAKE BASE & MERIDIAN
COALVILLE CITY, SUMMIT COUNTY, UTAH

SHEET 1 OF 1

OWNER & DEVELOPER:
CRA ENTERPRISES



This map is provided solely for the purpose of assisting in locating the property and Cottonwood Title Insurance Agency, Inc. assumes no liability for variation, if any, with any actual survey.



- NOTES:**
- The owner or property within the Eastern Summit County recognizes the importance of agricultural lands and operations and shall use business enterprises in accordance with the zoning ordinance...
 - Utilities shall have the right to install, maintain, and operate their equipment above and below ground...
 - All lots within this subdivision must meet all building permit requirements at the time of building permit issuance.
 - All lots must conform to the City Development Code relating to Single-Family Lots.

QUESTAR GAS COMPANY
Approved and accepted this 6 day of MAY, 2007
QUESTAR GAS COMPANY
Campy S. G. S. G.
The PRE CONST. SPEC.

City Public Works Department
Approved and Accepted this 7th day of May, 2007.
BY: Director

North Summit Fire District
Approved and Accepted this 7th day of May, 2007.
BY: Chair

Rocky Mountain Power
Approved and Accepted this 7th day of May, 2007.
BY: Mayor

Summit County Health Department
Approved and Accepted this 7th day of May, 2007.
BY: Director

City Council Approval
Presented to the Coalville City Council on this 7th day of May, 2007, at which time this record of survey was approved.
BY: Mayor

City Planning Commission
Approved and accepted by the Coalville City Planning Commission on this 23rd day of April, 2007.
BY: Chair

City Engineer
I have examined the proposed plat and it is correct in accordance with information on file in this office on this 7th day of MAY, 2007.
BY: Coalville City Engineer

Attorneys Certificate
I have examined the proposed plat of this subdivision and in my opinion it conforms with the ordinances applicable thereto and now in force and effect.
BY: Coalville City Attorney

SURVEYORS CERTIFICATE

I, WILDE DO CERTIFY THAT I AM A PROFESSIONAL LAND SURVEYOR, AND THAT I HAVE PREPARED THIS SURVEY IN ACCORDANCE WITH THE UTAH SURVEYING ACT AND THE RULES THEREUNDER. I HAVE MADE A RISKY OF THE TRACT OF LAND SHOWN ON THIS PLAN AND DESCRIBED HEREON, AND HAVE SUBMITTED SAID TRACT OF LAND TO THE COUNTY CLERK OF COALVILLE CITY, SUMMIT COUNTY, UTAH, AND THAT SAME HAS BEEN CORRECTLY SURVEYED AND STAKED ON THE GROUND AS SHOWN ON THIS PLAN.

BOUNDARY DESCRIPTION

Reference is made to the plat of Section 4, Township 2 North, Range 5 East, Salt Lake Base and Meridian and being a Block of Bearing Tracts as shown on Plat 89-47-19-E, recorded in the Southern Corner of the South Quarter of said Section 4, described as follows:

Block of bearing Tracts 89-47-19-E, 89-47-20-E, 89-47-21-E, 89-47-22-E, 89-47-23-E, 89-47-24-E, 89-47-25-E, 89-47-26-E, 89-47-27-E, 89-47-28-E, 89-47-29-E, 89-47-30-E, 89-47-31-E, 89-47-32-E, 89-47-33-E, 89-47-34-E, 89-47-35-E, 89-47-36-E, 89-47-37-E, 89-47-38-E, 89-47-39-E, 89-47-40-E, 89-47-41-E, 89-47-42-E, 89-47-43-E, 89-47-44-E, 89-47-45-E, 89-47-46-E, 89-47-47-E, 89-47-48-E, 89-47-49-E, 89-47-50-E, 89-47-51-E, 89-47-52-E, 89-47-53-E, 89-47-54-E, 89-47-55-E, 89-47-56-E, 89-47-57-E, 89-47-58-E, 89-47-59-E, 89-47-60-E, 89-47-61-E, 89-47-62-E, 89-47-63-E, 89-47-64-E, 89-47-65-E, 89-47-66-E, 89-47-67-E, 89-47-68-E, 89-47-69-E, 89-47-70-E, 89-47-71-E, 89-47-72-E, 89-47-73-E, 89-47-74-E, 89-47-75-E, 89-47-76-E, 89-47-77-E, 89-47-78-E, 89-47-79-E, 89-47-80-E, 89-47-81-E, 89-47-82-E, 89-47-83-E, 89-47-84-E, 89-47-85-E, 89-47-86-E, 89-47-87-E, 89-47-88-E, 89-47-89-E, 89-47-90-E, 89-47-91-E, 89-47-92-E, 89-47-93-E, 89-47-94-E, 89-47-95-E, 89-47-96-E, 89-47-97-E, 89-47-98-E, 89-47-99-E, 89-47-100-E.

OWNERS DEDICATION

WE THE UNDERSIGNED OWNERS OF THE HEREBY DESCRIBED TRACT OF LAND, HEREBY SET ASIDE AND DEDICATE TO THE PUBLIC THE TRACT OF LAND DESCRIBED IN THE NAME OF THE SAID TRACT CEDAR CREST OF ALLEN HOLLOW AND HEREBY DEDICATE, GRANT AND CONVEY TO COALVILLE CITY, SUMMIT COUNTY, UTAH, ALL THE STRIPS OR PORTIONS OF SAID TRACT OF LAND WHICH ARE SHOWN ON THIS PLAN AS BEING NECESSARY FOR THE PUBLIC USE AND ALSO DEDICATE TO COALVILLE CITY, UTAH, THESE STRIPS OR PORTIONS OF SAID TRACT OF LAND WHICH ARE SHOWN ON THIS PLAN AS BEING NECESSARY FOR THE PUBLIC UTILITY AND DRAINAGE PURPOSES AS SHOWN HEREON. THE SAME TO BE USED FOR THE DRAINAGE AS MAY BE AUTHORIZED BY COALVILLE CITY.

IN WITNESS WHEREOF, I HAVE HEREIN TO SET
THIS 7th DAY OF May, 2007.

David G. Rees
Center of Surveying, Planning, & Design

STATE OF UTAH
COUNTY OF SUMMIT
PERSONALLY APPEARED BEFORE ME THIS 7th DAY OF May, 2007, THE FOLLOWING:
David G. Rees
Elwin Rees

WHO ACKNOWLEDGED TO ME THAT THEY EXECUTED THE ABOVE OWNERS DEDICATION.
MY COMMISSION EXPIRES 02-01-2009
RESIDING IN Summit County
NOTARY PUBLIC

STATE OF UTAH
COUNTY OF SUMMIT
THE UNDERSIGNED LIEN HOLDER HEREBY CONSENTS TO THE RECORDED OF THIS PLAT.
BY: AUTHORIZED OFFICIAL
THE FOREGOING CONSENT TO RECORD WAS ACKNOWLEDGED BEFORE ME
THIS 7th DAY OF May, 2007, BY: _____
MY COMMISSION EXPIRES _____ BY: _____
RESIDING IN: _____ NOTARY PUBLIC

STATE OF UTAH
COUNTY OF SUMMIT
RECORDED AND FILED AT THE REQUEST OF
Cedar Crest Farm
Date: 6-28-07 Time: 10:29 P.M.
Entry # 814943 Fee: \$ 31.00
COUNTY RECORDER

STATE OF UTAH
COUNTY OF SUMMIT
COUNTY RECORDER

STATE OF UTAH
COUNTY OF SUMMIT
COUNTY RECORDER

STATE OF UTAH
COUNTY OF SUMMIT
COUNTY RECORDER

STATE OF UTAH
COUNTY OF SUMMIT
COUNTY RECORDER

STATE OF UTAH
COUNTY OF SUMMIT
COUNTY RECORDER

STATE OF UTAH
COUNTY OF SUMMIT
COUNTY RECORDER

STATE OF UTAH
COUNTY OF SUMMIT
COUNTY RECORDER

STATE OF UTAH
COUNTY OF SUMMIT
COUNTY RECORDER

STATE OF UTAH
COUNTY OF SUMMIT
COUNTY RECORDER