

N 1/4 CORNER OF SECTION 23,
TOWNSHIP 5 NORTH, RANGE 2 WEST,
S. L. B. & M.

5600 SOUTH STREET

NORTHEAST CORNER OF SECTION 23,
TOWNSHIP 5 NORTH, RANGE 2 WEST,
S. L. B. & M.

ROY CITY CENTRE

PART OF THE N.E. 1/4 OF SEC.23, T.5N., R.2W., S.L.B. & M.
ROY CITY, WEBER COUNTY, UTAH
JULY 1991

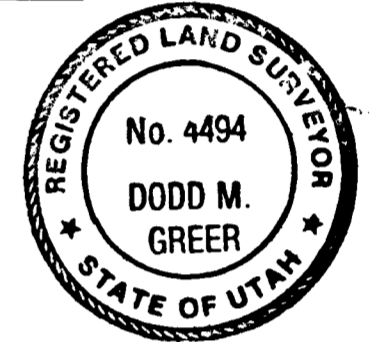
SURVEYOR'S CERTIFICATE

I, DODD M. GREER, A REGISTERED LAND SURVEYOR IN THE STATE OF UTAH, DO HEREBY CERTIFY THAT THIS PLAT OF ROY CITY CENTRE IN WEBER COUNTY, UTAH HAS BEEN CORRECTLY DRAWN TO THE DESIGNATED SCALE AND IS A TRUE AND CORRECT REPRESENTATION OF THE FOLLOWING DESCRIPTION OF LANDS INCLUDED IN SAID SUBDIVISION BASED ON DATA COMPILED FROM RECORDS IN THE WEBER COUNTY RECORDER'S OFFICE AND OF A SURVEY MADE ON THE GROUND.

SIGNED THIS 19th DAY OF August, 1991.

4494
LICENSE NO.

Dodd M. Greer
SIGNATURE



BOUNDARY DESCRIPTION

BEGINNING AT A POINT ON THE SOUTH RIGHT-OF-WAY LINE OF 5600 SOUTH STREET, SAID POINT BEING SOUTH 39.03 FEET AND WEST 200.32 FEET FROM THE NORTHEAST CORNER OF SECTION 23, TOWNSHIP 5 NORTH, RANGE 2 WEST, SALT LAKE BASE AND MERIDIAN AND RUNNING THENCE S 0°27'51" W 137.78 FEET; THENCE S 89°32'09" EAST 150.00 FEET; THENCE ALONG THE WESTERLY RIGHT-OF-WAY LINE OF 1900 WEST STREET, S 0°27'51" W 447.76 FEET; THENCE N 89°40'56" W 90.00 FEET; THENCE S 0°27'51" W 90.00 FEET; THENCE ALONG THE NORTHERLY RIGHT-OF-WAY LINE OF 5700 SOUTH STREET, N 89°40'56" W 585.89 FEET, THENCE N 0°27'45" E 674.38 FEET; THENCE ALONG THE SOUTH RIGHT-OF-WAY LINE OF 5600 SOUTH STREET, S 89°50'57" E 525.91 FEET TO THE POINT OF BEGINNING. CONTAINS 9.81 ACRES.

BASIS OF BEARING: SECTION LINE FROM THE NORTHEAST CORNER TO THE EAST QUARTER CORNER S 0°27'51" W.

EXCEPT THAT PORTION SHOWN AS PARCEL 10.

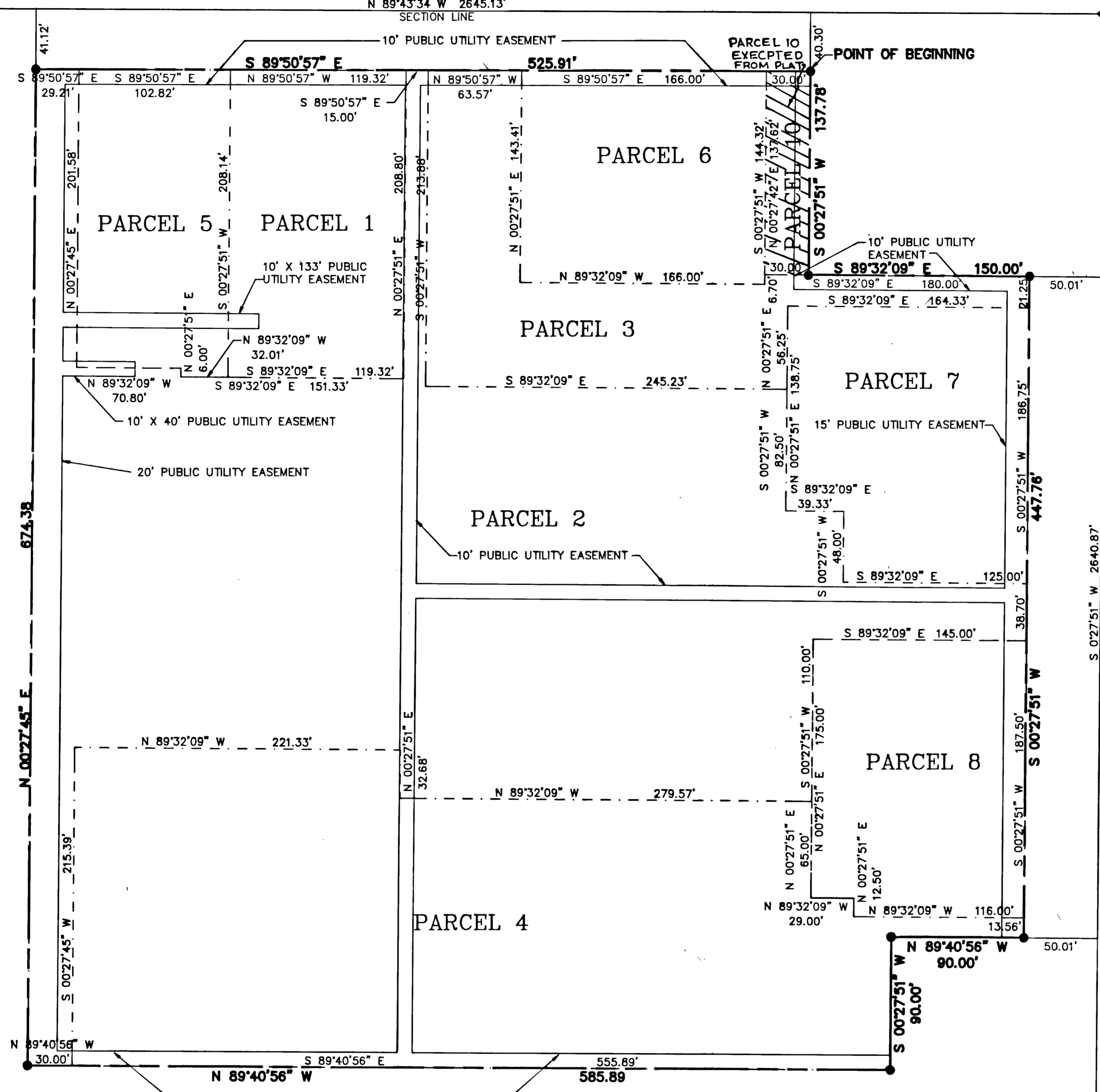
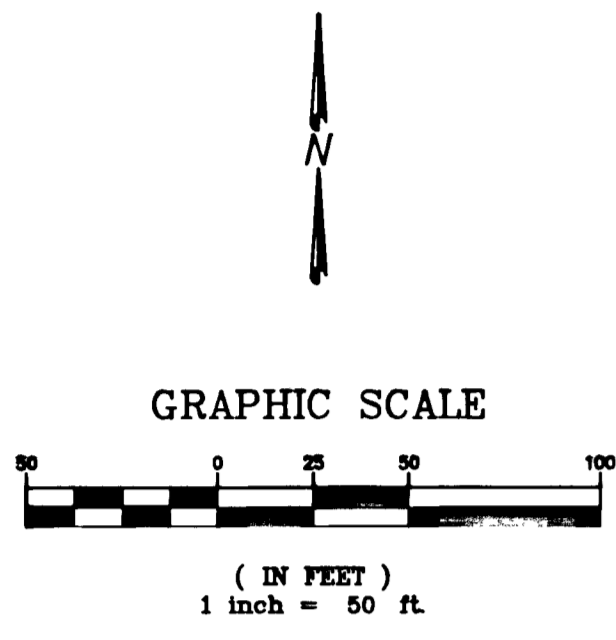
ROY CITY CENTRE REALTY LIMITED, A LIMITED PARTNERSHIP
BY: WOODBURY AMSOURCE INC., A UTAH CORPORATION ITS GENERAL PARTNER

BY: *John R. Gaskill*
JOHN R. GASKILL, ITS PRESIDENT

BY: *W. Richards Woodbury*
W. RICHARDS WOODBURY, ITS VICE PRESIDENT

ALBERTSON'S INC., A DELAWARE CORPORATION

BY: *Thomas R. Salter*
SENIOR VICE PRESIDENT



1900 WEST STREET

5700 SOUTH STREET

EAST 1/4 CORNER OF SECTION 23,
TOWNSHIP 5 NORTH, RANGE 2 WEST,
S. L. B. & M.

ROY CITY PLANNING COMMISSION
APPROVED BY THE ROY CITY PLANNING COMMISSION ON THE 19 DAY OF August, 1991.
D. Russell Johnson
CHAIRMAN

ROY CITY APPROVAL
THIS IS TO CERTIFY THAT THIS PLAT AND DEDICATION OF THIS PLAT WERE DULY APPROVED AND ACCEPTED BY THE CITY COUNCIL OF ROY CITY, UTAH. THIS 20 DAY OF August, 1991.
ATTEST: *Lyne Clark*
CITY CLERK
Heather Romberg
MAYOR

ROY CITY ENGINEER
I hereby certify that I have carefully investigated the lines of survey of the foregoing plat and legal description of the land embraced therein and find them to be correct and to agree with the lines and monuments on record in this office.
Signed this 16th day of SEPTEMBER, 1991.
Kent Jones
City Engineer

ROY CITY ATTORNEY
I have examined the foregoing plat and description of ROY CITY CENTRE and in my opinion they conform with the city ordinances applicable thereto and now in force and effect.
9/9/91
Christopher Adams
City Attorney

COUNTY RECORDER
ENTRY NO. 1169234 FEE PAID \$24.00 FILED FOR RECORD AND RECORDED MARCH 4, 1992 AT 9:06 A.M. IN BOOK 33 OF OFFICIAL RECORDS, PAGE 89 FOR: ROY CITY CENTER
Doug Crofts
COUNTY RECORDER
BY: *Karla Rasmussen*
DEPUTY