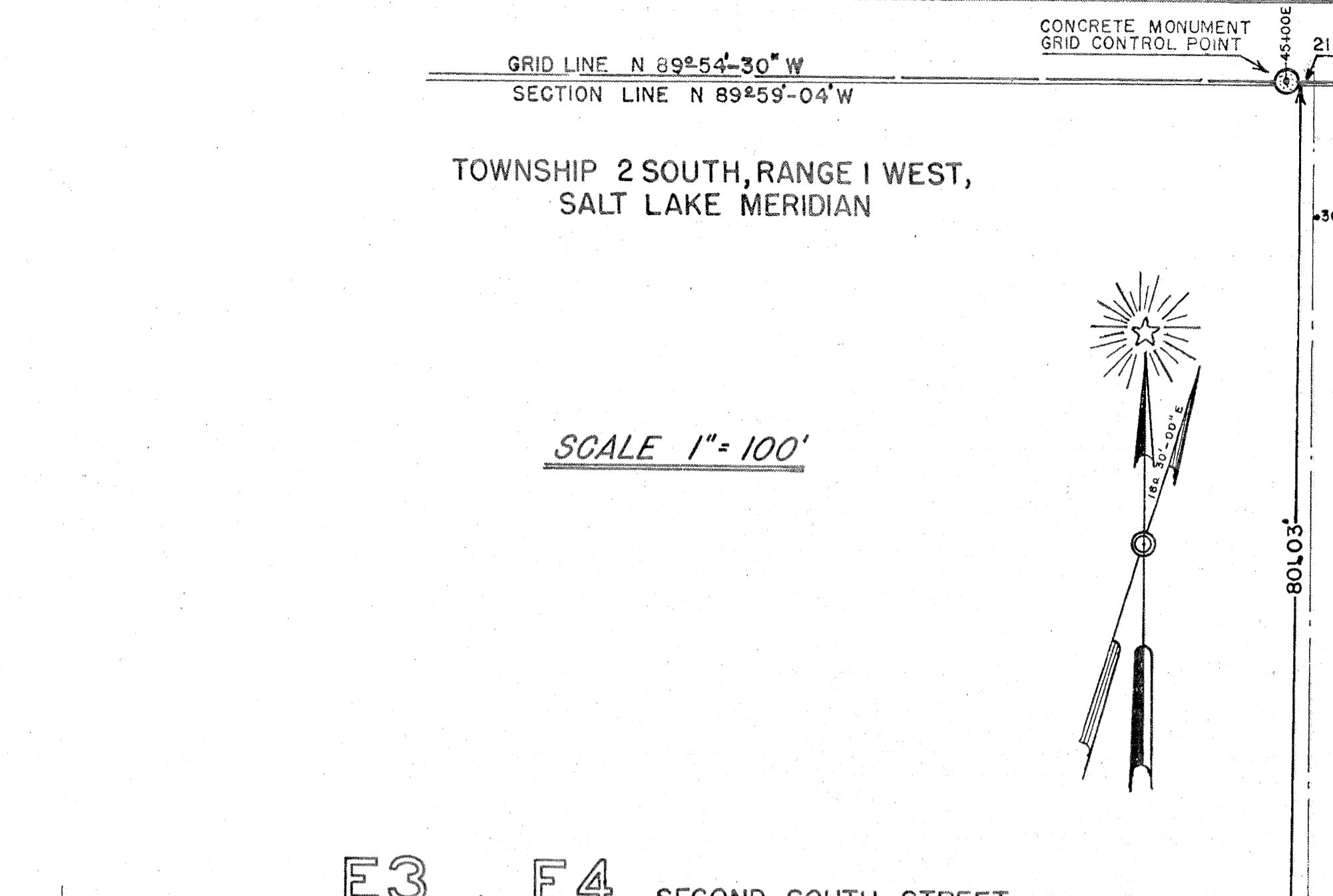
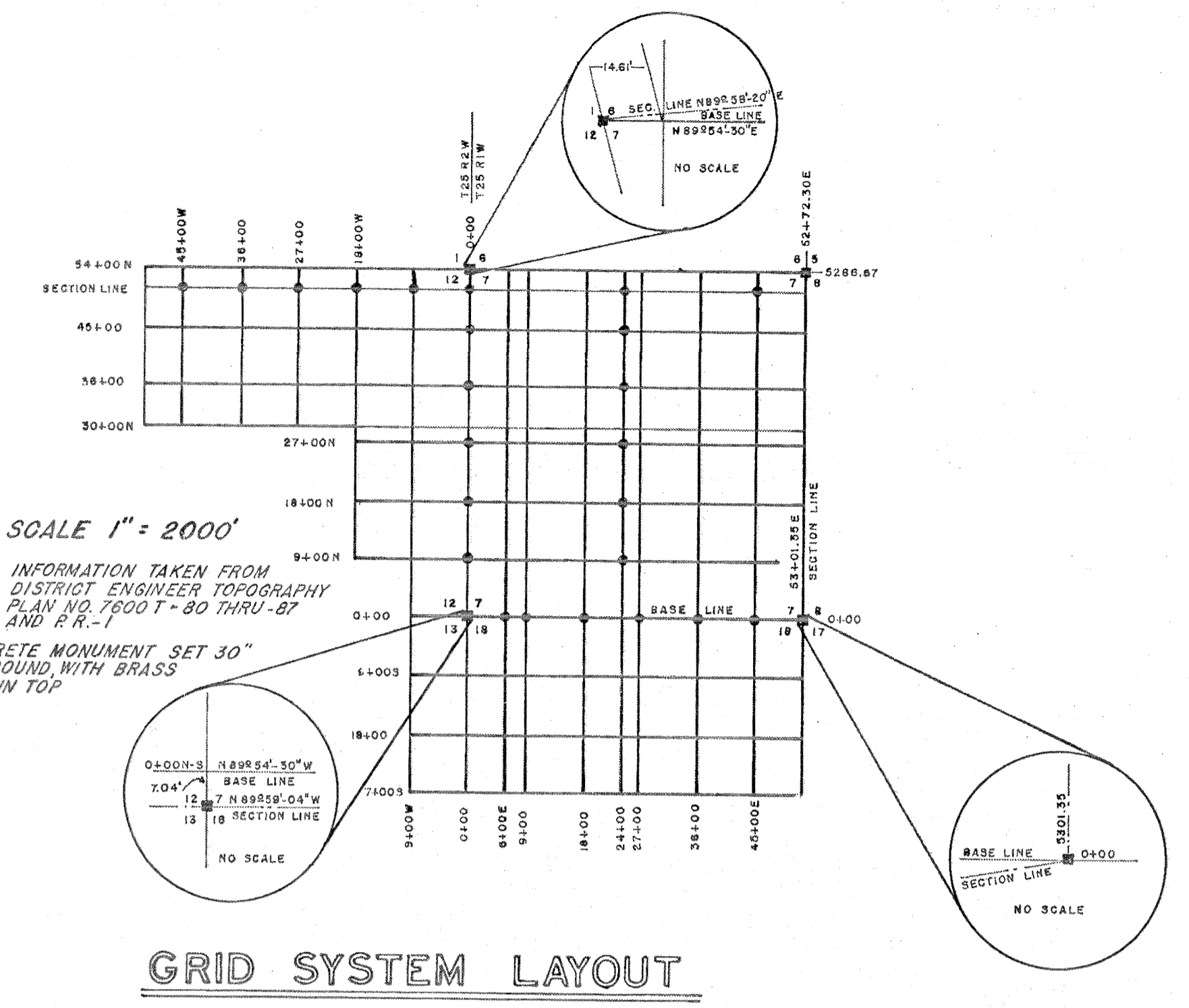


This map is provided solely for the purpose of assisting in locating the property and Cottonwood Title Insurance Agency, Inc. assumes no liability for variation, if any, with any actual survey.



**SURVEYORS CERTIFICATE**  
 L.A.M. SAMS, A REGISTERED LAND SURVEYOR AS PRESCRIBED UNDER THE LAWS OF THE STATE OF UTAH, AND HOLDING CERTIFICATE NO. 1272, DO HEREBY CERTIFY THAT THE TRACT OF LAND SHOWN ON THIS MAP AND OWNED BY KEARNS TOWNSITE, INCORPORATED, IS DESCRIBED AS FOLLOWS:  
 A TRACT OF LAND CONTAINED IN BLOCKS TWO (2), THREE (3) FOUR (4) AND FOUR (4) DESCRIBED AS SUCH IN THE GOVERNMENT DESCRIPTIONS AND SHOWN ON THE GOVERNMENT AREA MAPS OF CAMP KEARNS, UTAH, A PORTION OF SECTION 18, TOWNSHIP 2 SOUTH, RANGE 1 WEST, SALT LAKE BASE AND MERIDIAN, SALT LAKE COUNTY, STATE OF UTAH, AND MORE PARTICULARLY DESCRIBED AS FOLLOWS: CONTAINED IN A PORTION OF THE WEST 1/4 AND THE NORTH 1/4 OF SECTION 18, AND BEGINNING AT A POINT N 89° 54' 30" W ALONG THE NORTH LINE OF SECTION 18, 74.9 FT. AND 30° 05' 30" W 80.0 FT. FROM THE N.E. CORNER OF SECTION 18 T2S, R1W, SLBM, SAID POINT BEING THE INTERSECTION OF THE EAST R.O.W. OF AVE. B AND THE BACK RESIDENTIAL LOT LINES EXTENDED TO CORNER 20, 21, 22 & 23, BLOCK 4, SAID LOT LINES BEING 142.0 FT. SOUTH OF THE CENTERLINE OF SECOND SOUTH STREET, THENCE S 0° 05' 30" W ALONG THE R.O.W. LINE OF AVE. B 648.0 FT. TO A POINT ON THE SOUTH R.O.W. LINE OF FIFTH ST. STREET EXTENDED, THENCE N 89° 54' 30" W ALONG SAID R.O.W. LINE 388.44 FT. TO THE INTERSECTION OF THE EAST R.O.W. LINE OF AVE. E; THENCE S 0° 05' 30" W ALONG SAID R.O.W. LINE 42.0 FT. TO A POINT SAID POINT BEING THE INTERSECTION OF THE SOUTH LINE OF LOT 2, BLOCK 19 (EXTENDED); THENCE N 89° 54' 30" W ALONG SAID LOT LINE 170.0 FT. TO A POINT, SAID POINT BEING THE SOUTHWEST CORNER OF LOT 2, BLOCK 19; THENCE N 0° 05' 30" E ALONG THE BACK LOT LINE OF SAID LOT 2, 35.0 FT. TO A POINT SAID POINT BEING THE SOUTH EAST CORNER OF LOT 20, BLOCK 19, ALSO THE INTERSECTION OF THE BACK LOT LINES OF BLOCK 19; THENCE N 89° 54' 30" W ALONG SAID BACK LOT LINES 630.0 FT. TO A POINT, SAID POINT BEING THE SOUTHWEST CORNER OF LOT 20, BLOCK 19; THENCE N 0° 05' 30" E ALONG THE WEST LINE OF SAID LOT 20, 107.0 FT. TO A POINT ON THE SOUTH R.O.W. LINE OF FIFTH SOUTH STREET, THENCE N 89° 54' 30" W ALONG SAID R.O.W. LINE 1258.148 FT. TO A POINT ON THE SOUTHWESTERLY R.O.W. LINE OF AVENUE N; THENCE N 32° 16' 30" W ALONG SAID R.O.W. LINE 90.24 FT. TO A POINT, SAID POINT BEING THE INTERSECTION OF THE NORTHWESTERLY LINE OF LOT 13, BLOCK 28 (EXTENDED); THENCE N 51° 43' 30" E ALONG SAID LOT LINE 135.722 FT. TO THE INTERSECTION OF THE BACK LOT LINES OF BLOCK 28; THENCE S 88° 58' 30" E ALONG THE BACK LOT LINES OF BLOCKS 28 AND 3, 200.75 FT. TO A POINT ON THE EAST R.O.W. LINE OF AVE. E; THENCE N 0° 05' 30" E ALONG SAID R.O.W. LINE 17.0 FT. TO A POINT ON THE BACK LOT LINES OF LOTS 12, 11, 10, 9 IN BLOCK 2 COOR. S1-E3 AND LOTS 12 & 11 BLOCK 5, COOR. S1-E4; THENCE S 89° 54' 30" E ALONG SAID LOT LINES 468.0 FT. TO A POINT SAID POINT BEING ON THE SOUTH BACK LOT LINES OF BLOCK 5; COOR. S1-E4; THENCE N 0° 05' 30" E ALONG SAID BACK LOT LINES 476.0 FT. TO A POINT, SAID POINT BEING THE INTERSECTION OF THE BACK LOT LINES OF LOTS 22 & 1 BLOCK 5, & L. 20, 21, 22 & 1, BLOCK 5, S1-E4; THENCE S 89° 54' 30" E ALONG SAID LOT LINES 820.44 FT. TO THE POINT OF BEGINNING, CONTAINING 18,885 ACRES.  
 I ALSO CERTIFY THAT I HAVE BY THE AUTHORITY OF SAID CORPORATION SUBDIVIDED SAID DESCRIBED AREA INTO LOTS, BLOCKS AND STREETS AS KEARNS TOWNSITE PLAT "4" THAT ALL DIMENSIONS ARE SHOWN ON THIS MAP WHICH HAS BEEN ACCURATELY DRAWN TO A SCALE OF 100 FEET TO THE INCH, THAT THE NAMES AND DIMENSIONS OF THOSE PARCELS OF LAND DESIGNATED FOR PUBLIC USE ARE AS FOLLOWS: AVE. "B" 648 FT. IN LENGTH AND 60 FT. IN WIDTH; AVE. "C" 588 FT. IN LENGTH AND 50 FT. IN WIDTH; AVE. "D" 112 FT. IN LENGTH AND 60 FT. IN WIDTH; AVE. "E" 237 FT. IN LENGTH AND 60 FT. IN WIDTH; AVE. "N" 90.24 FT. IN LENGTH AND 50 FT. IN WIDTH; AVE. "N" 90.24 FT. IN LENGTH AND 60 FT. IN WIDTH; FIFTH SOUTH STREET 2959.321 IN LENGTH AND 60 FT. IN WIDTH.

**COUNTY SURVEYORS CERTIFICATE**  
 I hereby certify that I have examined this map and have found the same to be in accordance with information on file in this office.  
 Date 11 May 1953 Boyd W. Young County Surveyor

**OWNERS DEDICATION**  
 Know all men by these presents that Kearns Townsite, a corporation, owners of the above described tract of land, having caused the same to be subdivided into block, lots and streets to be known hereafter as KEARNS TOWNSITE PLAT "4", do hereby dedicate for perpetual use of the public all parcels of land shown on this map as intended for public use.  
 In witness whereof we have hereunto set our hands this 11 day of MAY, A. D. 1950  
Boyd W. Young President  
Max M. Bishop Secretary

**APPROVED AS TO FORM**  
Chas. W. Morrison County Attorney  
Boyd W. Young County Surveyor

**APPROVED**  
 Approved by the Salt Lake County Planning Commission  
Korcedo CHAIRMAN

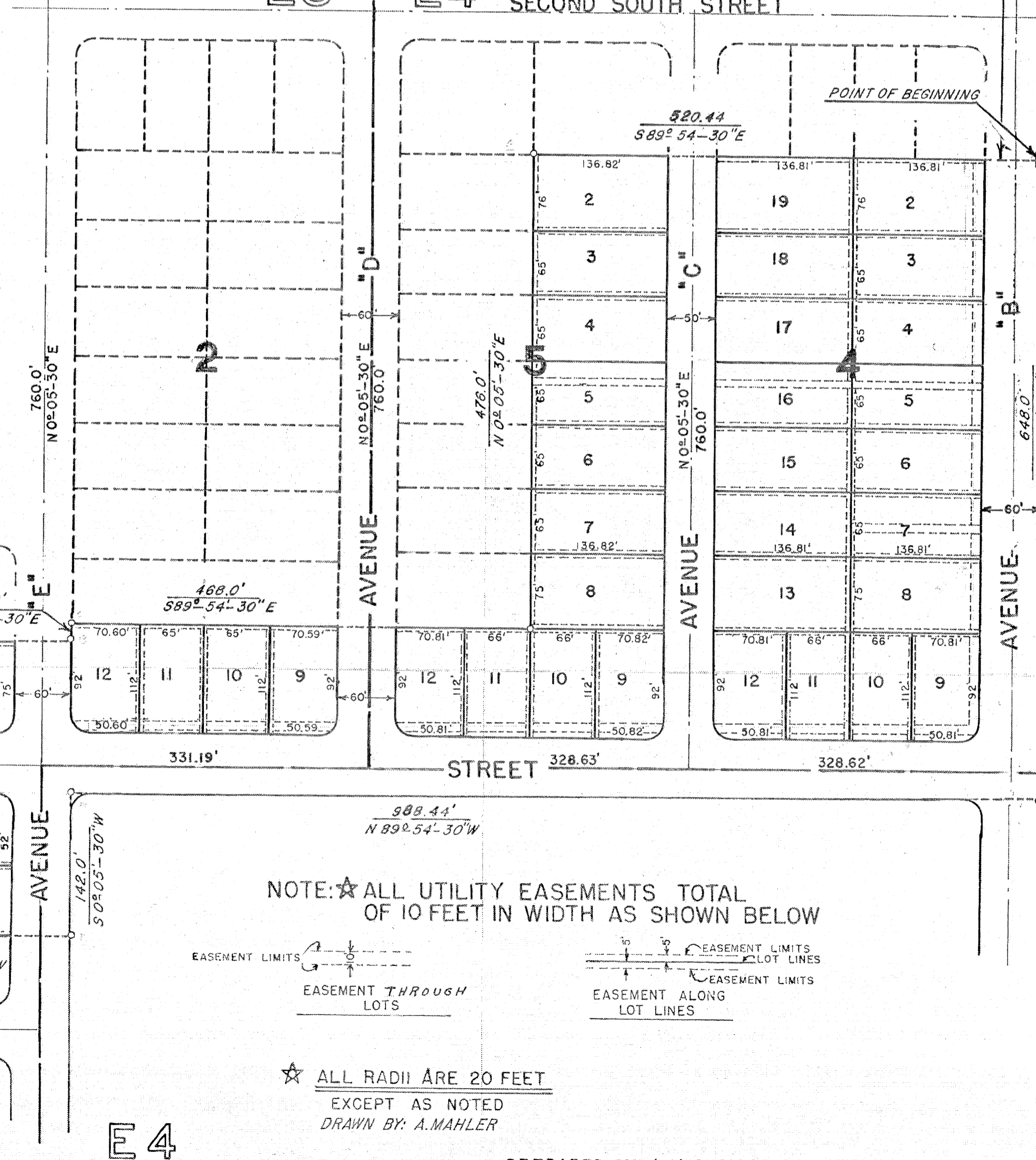
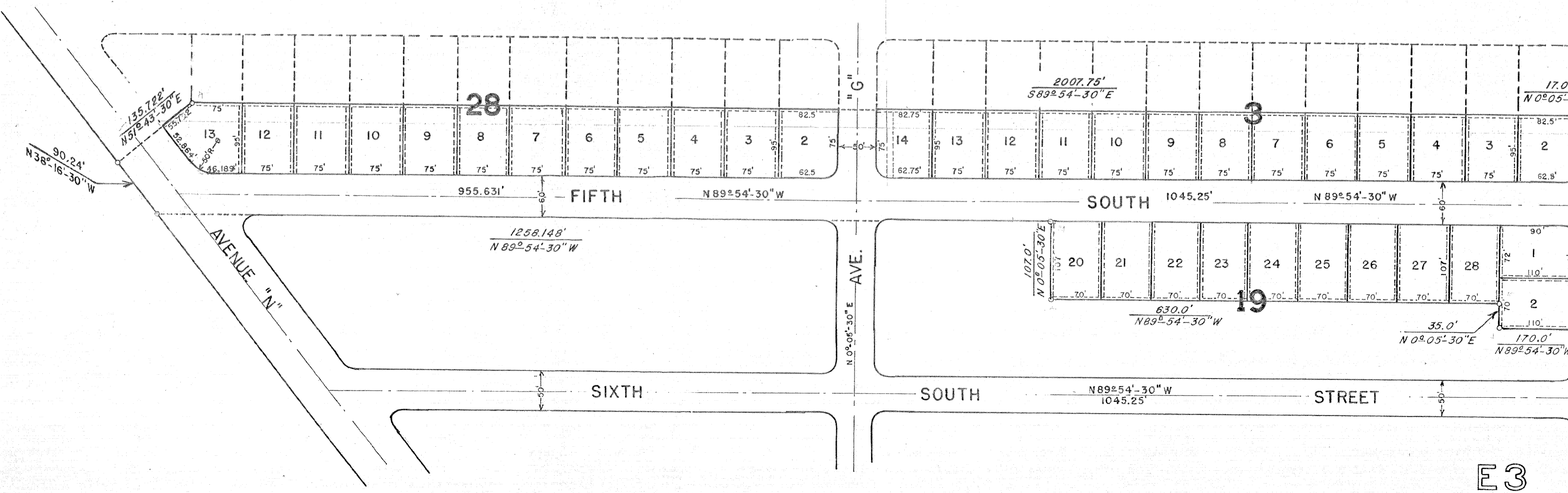
**APPROVED**  
 Approved and accepted by the Board of County Commissioners.  
 this 11 day of MAY, A. D. 1950  
Boyd W. Young Chairman  
Boyd W. Young County Clerk

**NOTARY PUBLIC**  
 Residing in Salt Lake City, Utah  
Boyd W. Young Notary Public

**PLAT "4"**  
**A SUBDIVISION PART OF**  
**KEARNS TOWNSITE**  
 PART OF SECTION 18, T2S, R1W, SLBM.

1206990  
 STATE OF UTAH, COUNTY OF SALT LAKE,  
 FILED AND RECORDED AT THE REQUEST OF  
 MOUNTAIN VIEW CONST. CO.  
 JULY 7, 1950 AT 2:10 P.M. IN BOOK "L" PLAT PAGE 4.  
 FEE PAID: \$44.00  
Boyd W. Young Notary Public

PREPARED BY: A. M. SAMS



**PLAT "4"**  
**A SUBDIVISION PART OF**  
**KEARNS TOWNSITE**  
 PART OF SECTION 18, T2S, R1W, SLBM.

1206990  
 STATE OF UTAH, COUNTY OF SALT LAKE,  
 FILED AND RECORDED AT THE REQUEST OF  
 MOUNTAIN VIEW CONST. CO.  
 JULY 7, 1950 AT 2:10 P.M. IN BOOK "L" PLAT PAGE 4.  
 FEE PAID: \$44.00  
Boyd W. Young Notary Public