

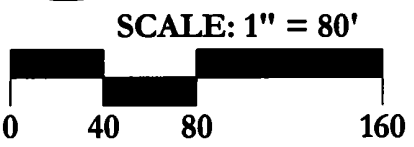
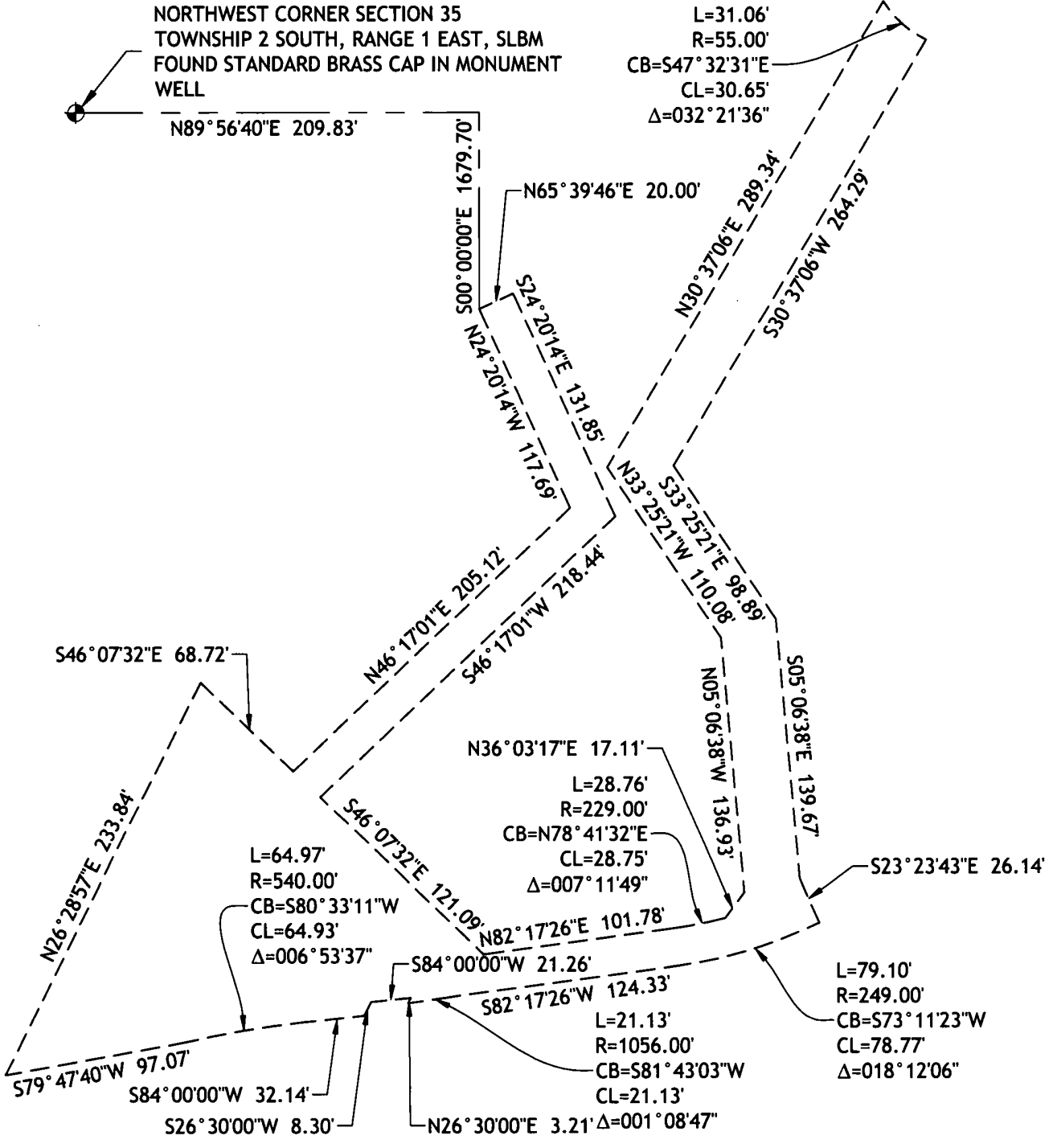
EXHIBIT "A"

COMMENCING AT THE NORTHWEST CORNER OF SECTION 35, TOWNSHIP 2 SOUTH, RANGE 1 EAST, SALT LAKE BASE AND MERIDIAN, SAID NORTHWEST CORNER BEING A FOUND BRASS CAP MONUMENT; THENCE ALONG THE NORTH LINE OF THE NORTHWEST QUARTER (NW 1/4) OF SAID SECTION N89°56'40"E 209.83 FEET; THENCE DEPARTING SAID NORTH LINE S00°00'00"E 1679.70 FEET TO THE POINT OF BEGINNING;

THENCE N65°39'46"E 20.00 FEET; THENCE S24°20'14"E 131.85 FEET; THENCE S46°17'01"W 218.44 FEET; THENCE S46°07'32"E 121.09 FEET; N82°17'26"E 101.78 FEET; THENCE ALONG A CURVE TO THE LEFT, HAVING A RADIUS OF 229.00 FEET, A DISTANCE OF 28.76 FEET, A CHORD DIRECTION N78°41'32"E AND A CHORD DISTANCE OF 28.75 FEET; THENCE N36°03'17"E 17.11 FEET; THENCE N05°06'38"W 136.93 FEET; THENCE N33°25'21"W 110.08 FEET; THENCE N30°37'06"E 289.34 FEET; THENCE ALONG A NON-TANGENT CURVE TO THE LEFT, HAVING A RADIUS OF 55.00 FEET, A DISTANCE OF 31.06 FEET, A CHORD DIRECTION OF S47°32'31"E AND A CHORD DISTANCE OF 30.65 FEET; THENCE S30°37'06"W 264.29 FEET; THENCE S33°25'21"E 98.89 FEET; THENCE S05°06'38"E 139.67 FEET; THENCE S23°23'43"E 26.14 FEET; THENCE ALONG A CURVE TO THE RIGHT, HAVING A RADIUS OF 249.00 FEET, A DISTANCE OF 79.10 FEET, A CHORD DIRECTION OF S73°11'23"W AND A CHORD DISTANCE OF 78.77 FEET; THENCE S82°17'26"W 124.33 FEET; THENCE ALONG A CURVE TO THE LEFT, HAVING A RADIUS OF 1056.00 FEET, A DISTANCE OF 21.13 FEET, A CHORD DIRECTION OF S81°43'03"W AND A CHORD DISTANCE OF 21.13 FEET; THENCE N26°30'00"E 3.21 FEET; THENCE S84°00'00"W 21.26 FEET; THENCE S26°30'00"W 8.30 FEET; THENCE S84°00'00"W 32.14 FEET; THENCE ALONG A CURVE TO THE LEFT, HAVING A RADIUS OF 540.00 FEET, A DISTANCE OF 64.97 FEET, A CHORD DIRECTION OF S80°33'11"W AND A CHORD DISTANCE OF 64.93 FEET; THENCE S79°47'40"W 97.07 FEET; THENCE N26°28'57"E 233.84 FEET; THENCE S46°07'32"E 68.72 FEET; THENCE N46°17'01"E 205.12 FEET; THENCE N24°20'14"W 117.69 FEET TO THE POINT OF BEGINNING.
CONTAINS 1.19 ACRES IN AREA

C:\Users\mingo\Dropbox\EDM (1)\Projects\Watson Hollow\Drawings\Ph3\1.G-1_Plat_P3.dwg

NORTHWEST CORNER SECTION 35
 TOWNSHIP 2 SOUTH, RANGE 1 EAST, SLBM
 FOUND STANDARD BRASS CAP IN MONUMENT
 WELL



WATSON HOLLOW PHASE 1 AND 2 STORM DRAIN EASEMENT

DATE:
 4/17/2018

FIGURE:
 1 OF 1