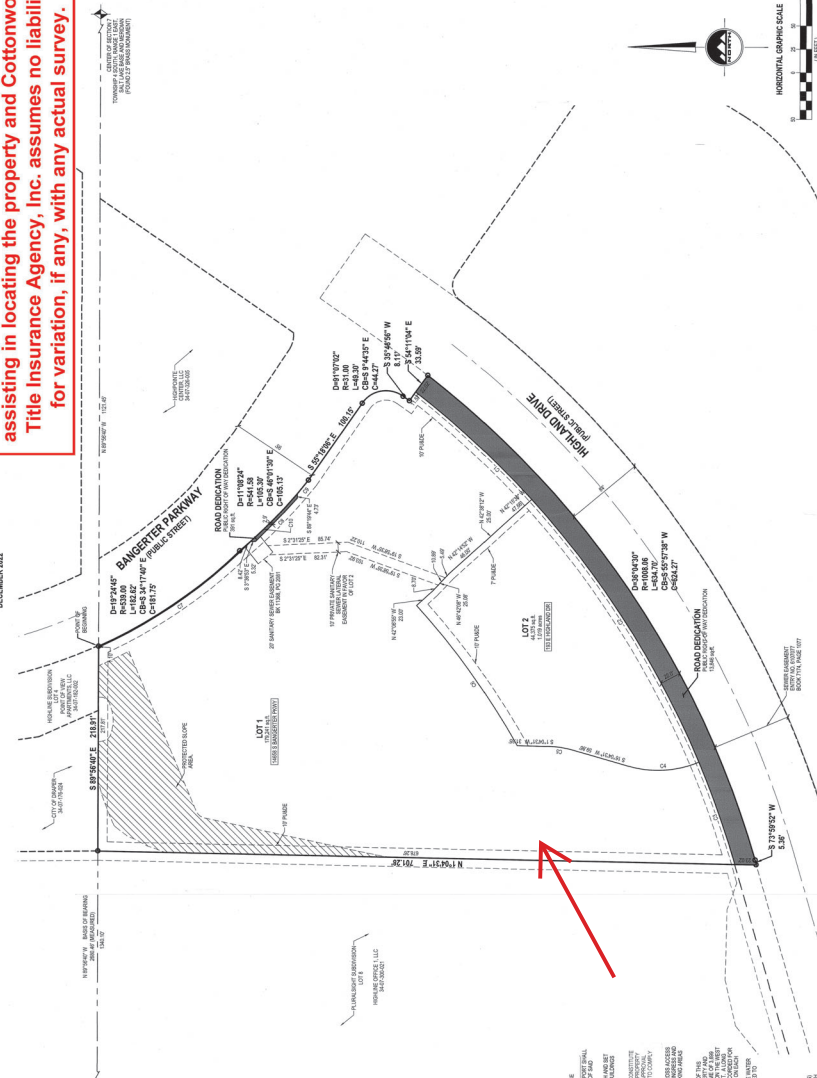


HIGHLAND DRIVE OFFICE SUBDIVISION

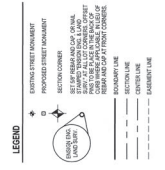
LOCATED IN THE SOUTHWEST QUARTER OF SECTION 7,
TOWNSHIP 48 NORTH, RANGE 35 WEST,
COUNTY OF SULLY, IOWA

This map is provided solely for the purpose of assisting in locating the property and Cottonwood Title Insurance Agency, Inc. assumes no liability for variation, if any, with any actual survey.



CURTAIN TABLE

CURTAIN	RANGE	SECTION	SECTION	CURTAIN
1	35W	18N	35W	18N
2	35W	18N	35W	18N
3	35W	18N	35W	18N
4	35W	18N	35W	18N
5	35W	18N	35W	18N
6	35W	18N	35W	18N
7	35W	18N	35W	18N
8	35W	18N	35W	18N
9	35W	18N	35W	18N
10	35W	18N	35W	18N
11	35W	18N	35W	18N
12	35W	18N	35W	18N
13	35W	18N	35W	18N
14	35W	18N	35W	18N
15	35W	18N	35W	18N
16	35W	18N	35W	18N
17	35W	18N	35W	18N
18	35W	18N	35W	18N
19	35W	18N	35W	18N
20	35W	18N	35W	18N



NOTES:

1. THE CURTAIN TABLE REFLECTS THE TOTAL AREA OF THE SUBDIVISION AS SHOWN ON THIS PLAN. THE TOTAL AREA OF THE SUBDIVISION IS 10.0 ACRES (435,600 SQ FT). THE TOTAL AREA OF THE SUBDIVISION IS 10.0 ACRES (435,600 SQ FT).
2. THE CURTAIN TABLE REFLECTS THE TOTAL AREA OF THE SUBDIVISION AS SHOWN ON THIS PLAN. THE TOTAL AREA OF THE SUBDIVISION IS 10.0 ACRES (435,600 SQ FT).
3. THE CURTAIN TABLE REFLECTS THE TOTAL AREA OF THE SUBDIVISION AS SHOWN ON THIS PLAN. THE TOTAL AREA OF THE SUBDIVISION IS 10.0 ACRES (435,600 SQ FT).
4. THE CURTAIN TABLE REFLECTS THE TOTAL AREA OF THE SUBDIVISION AS SHOWN ON THIS PLAN. THE TOTAL AREA OF THE SUBDIVISION IS 10.0 ACRES (435,600 SQ FT).
5. THE CURTAIN TABLE REFLECTS THE TOTAL AREA OF THE SUBDIVISION AS SHOWN ON THIS PLAN. THE TOTAL AREA OF THE SUBDIVISION IS 10.0 ACRES (435,600 SQ FT).
6. THE CURTAIN TABLE REFLECTS THE TOTAL AREA OF THE SUBDIVISION AS SHOWN ON THIS PLAN. THE TOTAL AREA OF THE SUBDIVISION IS 10.0 ACRES (435,600 SQ FT).
7. THE CURTAIN TABLE REFLECTS THE TOTAL AREA OF THE SUBDIVISION AS SHOWN ON THIS PLAN. THE TOTAL AREA OF THE SUBDIVISION IS 10.0 ACRES (435,600 SQ FT).
8. THE CURTAIN TABLE REFLECTS THE TOTAL AREA OF THE SUBDIVISION AS SHOWN ON THIS PLAN. THE TOTAL AREA OF THE SUBDIVISION IS 10.0 ACRES (435,600 SQ FT).
9. THE CURTAIN TABLE REFLECTS THE TOTAL AREA OF THE SUBDIVISION AS SHOWN ON THIS PLAN. THE TOTAL AREA OF THE SUBDIVISION IS 10.0 ACRES (435,600 SQ FT).
10. THE CURTAIN TABLE REFLECTS THE TOTAL AREA OF THE SUBDIVISION AS SHOWN ON THIS PLAN. THE TOTAL AREA OF THE SUBDIVISION IS 10.0 ACRES (435,600 SQ FT).
11. THE CURTAIN TABLE REFLECTS THE TOTAL AREA OF THE SUBDIVISION AS SHOWN ON THIS PLAN. THE TOTAL AREA OF THE SUBDIVISION IS 10.0 ACRES (435,600 SQ FT).
12. THE CURTAIN TABLE REFLECTS THE TOTAL AREA OF THE SUBDIVISION AS SHOWN ON THIS PLAN. THE TOTAL AREA OF THE SUBDIVISION IS 10.0 ACRES (435,600 SQ FT).
13. THE CURTAIN TABLE REFLECTS THE TOTAL AREA OF THE SUBDIVISION AS SHOWN ON THIS PLAN. THE TOTAL AREA OF THE SUBDIVISION IS 10.0 ACRES (435,600 SQ FT).
14. THE CURTAIN TABLE REFLECTS THE TOTAL AREA OF THE SUBDIVISION AS SHOWN ON THIS PLAN. THE TOTAL AREA OF THE SUBDIVISION IS 10.0 ACRES (435,600 SQ FT).
15. THE CURTAIN TABLE REFLECTS THE TOTAL AREA OF THE SUBDIVISION AS SHOWN ON THIS PLAN. THE TOTAL AREA OF THE SUBDIVISION IS 10.0 ACRES (435,600 SQ FT).
16. THE CURTAIN TABLE REFLECTS THE TOTAL AREA OF THE SUBDIVISION AS SHOWN ON THIS PLAN. THE TOTAL AREA OF THE SUBDIVISION IS 10.0 ACRES (435,600 SQ FT).
17. THE CURTAIN TABLE REFLECTS THE TOTAL AREA OF THE SUBDIVISION AS SHOWN ON THIS PLAN. THE TOTAL AREA OF THE SUBDIVISION IS 10.0 ACRES (435,600 SQ FT).
18. THE CURTAIN TABLE REFLECTS THE TOTAL AREA OF THE SUBDIVISION AS SHOWN ON THIS PLAN. THE TOTAL AREA OF THE SUBDIVISION IS 10.0 ACRES (435,600 SQ FT).
19. THE CURTAIN TABLE REFLECTS THE TOTAL AREA OF THE SUBDIVISION AS SHOWN ON THIS PLAN. THE TOTAL AREA OF THE SUBDIVISION IS 10.0 ACRES (435,600 SQ FT).
20. THE CURTAIN TABLE REFLECTS THE TOTAL AREA OF THE SUBDIVISION AS SHOWN ON THIS PLAN. THE TOTAL AREA OF THE SUBDIVISION IS 10.0 ACRES (435,600 SQ FT).

BOUNDARY DESCRIPTION

A general description of an acreage parcel as shown on the plat is given in the following description. The description is given in accordance with the provisions of the Iowa Code. The description is given in accordance with the provisions of the Iowa Code. The description is given in accordance with the provisions of the Iowa Code.

OWNER'S DEDICATION

Notwithstanding to whom the same may be made, the owner of the above described premises does hereby dedicate to the public, to be held in trust for the use and benefit of the public, the right of way shown on this plat for the road shown on this plat. The dedication is given in accordance with the provisions of the Iowa Code.

Dec 7, 2022
F.S. 2002

HIGHLAND DRIVE OFFICE SUBDIVISION

UNITED LIABILITY COMPANY ACKNOWLEDGMENT

STATE OF IOWA
COUNTY OF SULLY

I, *[Signature]*, Secretary, do hereby certify that the foregoing is a true and correct copy of the record of the above described plat as recorded in the records of the County of Sully, Iowa, on this 7th day of December, 2022.

RECORD OF SURVEY

FILE NO. _____

CITY ENGINEER APPROVAL

CITY PLANNING APPROVAL

CITY HEALTH DEPARTMENT APPROVAL

CITY LAND USE APPROVAL

CITY CLERK APPROVAL

ENGIN

RECORD OF SURVEY

FILE NO. _____

CITY ENGINEER APPROVAL

CITY PLANNING APPROVAL

CITY HEALTH DEPARTMENT APPROVAL

CITY LAND USE APPROVAL

CITY CLERK APPROVAL

HIGHLAND DRIVE OFFICE SUBDIVISION

LOCATED IN THE SOUTHWEST QUARTER OF SECTION 7,
TOWNSHIP 48 NORTH, RANGE 35 WEST,
COUNTY OF SULLY, IOWA

RECORDED IN SULLY COUNTY, IOWA

BY *[Signature]*, COUNTY CLERK

DATE: DEC 7, 2022

PLANNING APPROVAL

APPROVED: 12/14/22

HEALTH DEPARTMENT APPROVAL

APPROVED: 12/14/22

LAND USE APPROVAL

APPROVED: 12/14/22

CITY CLERK APPROVAL

APPROVED: 12/14/22

34-07-32 34-07-32L-002

34-07-32 34-07-32L-002

\$54.00