

THE HILLS AT SANTA CLARA PHASE 3 AMENDED

SECTION 17, TOWNSHIP 42 SOUTH, RANGE 16 WEST, SALT LAKE BASE AND MERIDIAN
 SANTA CLARA CITY, WASHINGTON COUNTY, UTAH

KEITH GUBLER
 INVESTMENTS CO.

PL DATA:
 L=170.20'
 R=130.00'
 A=070°32'19"
 CB=150°32'08"W
 CL=164.57'

PL DATA:
 L=142.37'
 R=161.50'
 A=050°30'35"
 CB=564°56'31"W
 CL=137.81'

PL DATA:
 L=170.20'
 R=130.00'
 A=070°32'19"
 CB=150°32'08"W
 CL=164.57'

PL DATA:
 L=170.20'
 R=130.00'
 A=070°32'19"
 CB=150°32'08"W
 CL=164.57'

PL DATA:
 L=170.20'
 R=130.00'
 A=070°32'19"
 CB=150°32'08"W
 CL=164.57'

PL DATA:
 L=170.20'
 R=130.00'
 A=070°32'19"
 CB=150°32'08"W
 CL=164.57'

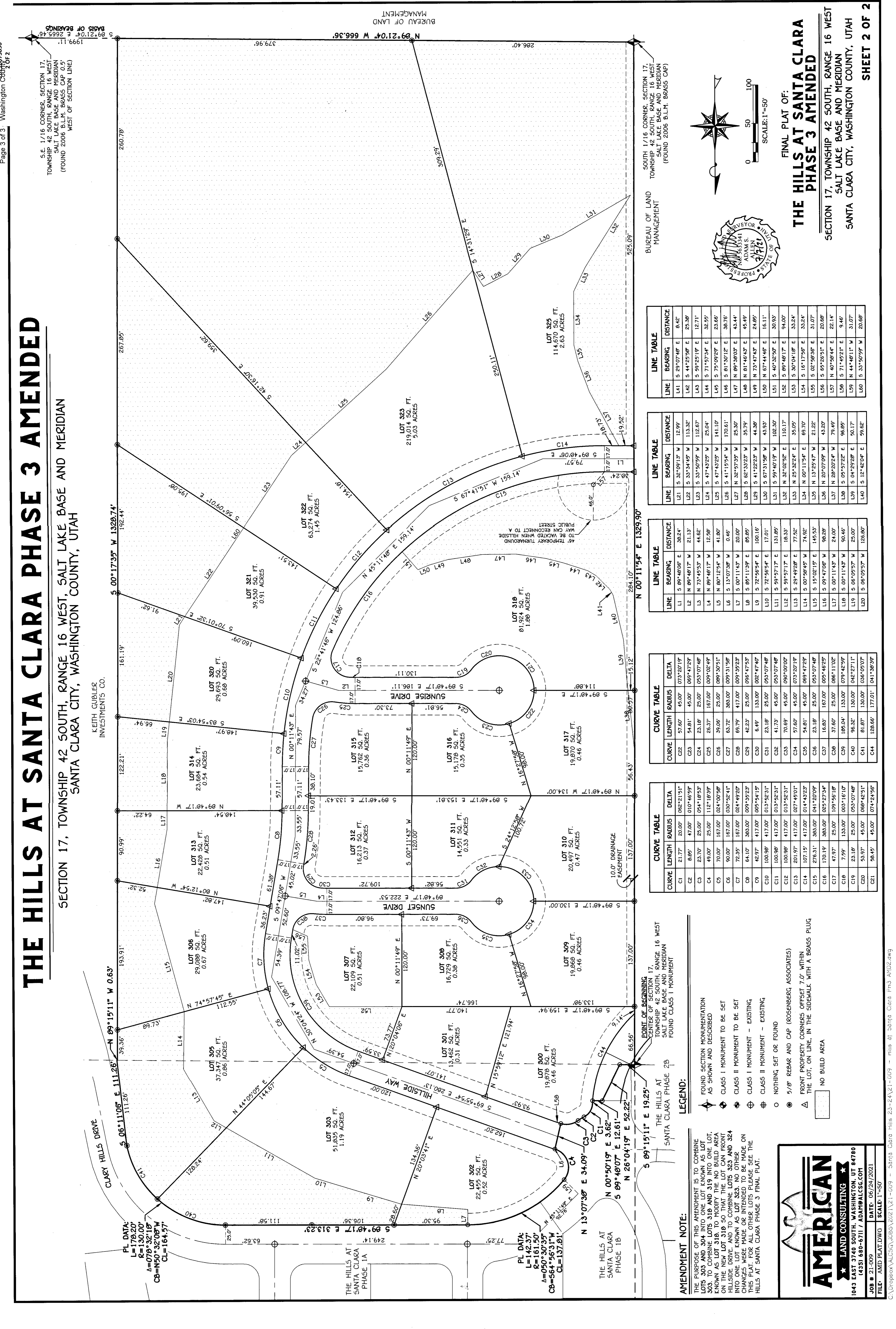
PL DATA:
 L=170.20'
 R=130.00'
 A=070°32'19"
 CB=150°32'08"W
 CL=164.57'

PL DATA:
 L=170.20'
 R=130.00'
 A=070°32'19"
 CB=150°32'08"W
 CL=164.57'

PL DATA:
 L=170.20'
 R=130.00'
 A=070°32'19"
 CB=150°32'08"W
 CL=164.57'

PL DATA:
 L=170.20'
 R=130.00'
 A=070°32'19"
 CB=150°32'08"W
 CL=164.57'

PL DATA:
 L=170.20'
 R=130.00'
 A=070°32'19"
 CB=150°32'08"W
 CL=164.57'



LINE	BEARING	DISTANCE
L41	S 29°07'46" E	8.42'
L42	S 44°25'58" E	25.38'
L43	S 59°25'19" E	12.71'
L44	S 71°57'34" E	32.55'
L45	S 75°09'23" E	23.86'
L46	S 81°30'12" E	38.78'
L47	N 81°38'03" E	43.44'
L48	N 81°46'43" E	45.49'
L49	N 73°47'45" E	24.69'
L50	N 67°44'46" E	16.11'
L51	S 40°32'50" E	30.93'
L52	S 69°48'17" E	94.00'
L53	S 30°04'18" E	33.24'
L54	S 16°17'56" E	33.24'
L55	S 02°59'38" E	31.07'
L56	S 69°26'51" E	20.69'
L57	N 40°58'44" E	22.14'
L58	S 71°42'21" E	9.46'
L59	N 44°48'11" W	31.07'
L60	S 33°50'59" W	20.69'

LINE	BEARING	DISTANCE
L21	S 32°09'13" W	12.99'
L22	S 33°54'45" W	113.32'
L23	S 33°50'59" W	112.67'
L24	S 47°43'25" W	25.04'
L25	S 47°43'25" W	141.10'
L26	S 41°15'54" W	176.61'
L27	N 32°57'35" W	25.30'
L28	S 62°33'23" W	35.79'
L29	S 41°22'23" W	44.38'
L30	S 67°31'58" W	43.93'
L31	S 59°40'19" W	102.30'
L32	N 32°02'52" E	110.17'
L33	N 25°32'24" E	35.05'
L34	N 00°11'43" E	69.70'
L35	N 13°25'47" W	21.22'
L36	N 20°07'09" W	43.20'
L37	N 28°20'24" W	79.49'
L38	S 05°57'22" E	96.85'
L39	S 04°29'28" E	50.17'
L40	S 12°42'04" E	59.62'

LINE	BEARING	DISTANCE
L1	S 89°48'06" E	39.24'
L2	N 89°48'17" W	21.13'
L3	N 73°45'53" W	44.62'
L4	N 89°48'17" W	12.58'
L5	N 80°12'54" W	41.80'
L6	S 13°07'39" W	0.46'
L7	S 00°11'43" W	20.00'
L8	S 89°11'39" E	89.89'
L9	S 72°56'54" E	100.16'
L10	S 72°56'54" E	100.16'
L11	S 59°57'17" E	131.89'
L12	S 59°57'17" E	18.33'
L13	S 29°49'28" E	77.32'
L14	S 09°58'45" W	74.92'
L15	S 15°02'19" E	145.53'
L16	S 09°47'08" W	98.28'
L17	S 00°11'43" W	24.00'
L18	S 06°09'57" W	90.48'
L19	S 06°09'57" W	126.80'
L20	S 06°09'57" W	126.80'

CURVE	LENGTH	RADIUS	DELTA
C22	57.60'	45.00'	073°20'19"
C23	54.91'	45.00'	089°47'29"
C24	23.18'	25.00'	053°07'48"
C25	26.37'	167.00'	009°02'49"
C26	39.06'	25.00'	089°30'51"
C27	63.72'	383.00'	009°31'59"
C28	69.79'	417.00'	009°35'23"
C29	42.23'	25.00'	086°47'35"
C30	6.49'	133.00'	002°47'40"
C31	23.18'	25.00'	053°07'48"
C32	41.73'	45.00'	053°07'48"
C33	70.69'	45.00'	090°00'00"
C34	57.60'	45.00'	073°20'19"
C35	54.91'	45.00'	089°47'29"
C36	23.18'	25.00'	053°07'48"
C37	16.83'	167.00'	005°46'29"
C38	37.60'	25.00'	086°11'02"
C39	189.04'	133.00'	079°42'59"
C40	96.32'	130.00'	042°27'11"
C41	81.87'	130.00'	036°05'07"
C44	128.66'	177.01'	041°38'39"

CURVE	LENGTH	RADIUS	DELTA
C1	21.77'	20.00'	082°21'51"
C2	8.85'	47.00'	010°46'59"
C3	23.70'	25.00'	094°18'53"
C4	49.00'	25.00'	112°18'39"
C5	70.00'	167.00'	024°00'58"
C6	90.00'	167.00'	030°52'41"
C7	72.35'	167.00'	024°49'20"
C8	64.10'	383.00'	009°35'23"
C9	42.97'	417.00'	005°54'19"
C10	100.98'	417.00'	013°52'31"
C11	100.98'	417.00'	013°52'31"
C12	100.98'	417.00'	013°52'31"
C13	201.97'	417.00'	027°42'01"
C14	107.15'	417.00'	014°43'23"
C15	276.31'	383.00'	041°20'09"
C16	170.19'	383.00'	023°27'34"
C17	47.97'	23.00'	109°56'18"
C18	7.59'	133.00'	003°16'10"
C19	23.18'	25.00'	053°07'48"
C20	53.97'	45.00'	089°42'51"
C21	96.45'	45.00'	074°24'56"

CURVE	LENGTH	RADIUS	DELTA
C1	21.77'	20.00'	082°21'51"
C2	8.85'	47.00'	010°46'59"
C3	23.70'	25.00'	094°18'53"
C4	49.00'	25.00'	112°18'39"
C5	70.00'	167.00'	024°00'58"
C6	90.00'	167.00'	030°52'41"
C7	72.35'	167.00'	024°49'20"
C8	64.10'	383.00'	009°35'23"
C9	42.97'	417.00'	005°54'19"
C10	100.98'	417.00'	013°52'31"
C11	100.98'	417.00'	013°52'31"
C12	100.98'	417.00'	013°52'31"
C13	201.97'	417.00'	027°42'01"
C14	107.15'	417.00'	014°43'23"
C15	276.31'	383.00'	041°20'09"
C16	170.19'	383.00'	023°27'34"
C17	47.97'	23.00'	109°56'18"
C18	7.59'	133.00'	003°16'10"
C19	23.18'	25.00'	053°07'48"
C20	53.97'	45.00'	089°42'51"
C21	96.45'	45.00'	074°24'56"

CURVE	LENGTH	RADIUS	DELTA
C22	57.60'	45.00'	073°20'19"
C23	54.91'	45.00'	089°47'29"
C24	23.18'	25.00'	053°07'48"
C25	26.37'	167.00'	009°02'49"
C26	39.06'	25.00'	089°30'51"
C27	63.72'	383.00'	009°31'59"
C28	69.79'	417.00'	009°35'23"
C29	42.23'	25.00'	086°47'35"
C30	6.49'	133.00'	002°47'40"
C31	23.18'	25.00'	053°07'48"
C32	41.73'	45.00'	053°07'48"
C33	70.69'	45.00'	090°00'00"
C34	57.60'	45.00'	073°20'19"
C35	54.91'	45.00'	089°47'29"
C36	23.18'	25.00'	053°07'48"
C37	16.83'	167.00'	005°46'29"
C38	37.60'	25.00'	086°11'02"
C39	189.04'	133.00'	079°42'59"
C40	96.32'	130.00'	042°27'11"
C41	81.87'	130.00'	036°05'07"
C44	128.66'	177.01'	041°38'39"

CURVE	LENGTH	RADIUS	DELTA
C1	21.77'	20.00'	082°21'51"
C2	8.85'	47.00'	010°46'59"
C3	23.70'	25.00'	094°18'53"
C4	49.00'	25.00'	112°18'39"
C5	70.00'	167.00'	024°00'58"
C6	90.00'	167.00'	030°52'41"
C7	72.35'	167.00'	024°49'20"
C8	64.10'	383.00'	009°35'23"
C9	42.97'	417.00'	005°54'19"
C10	100.98'	417.00'	013°52'31"
C11	100.98'	417.00'	013°52'31"
C12	100.98'	417.00'	013°52'31"
C13	201.97'	417.00'	027°42'01"
C14	107.15'	417.00'	014°43'23"
C15	276.31'	383.00'	041°20'09"
C16	170.19'	383.00'	023°27'34"
C17	47.97'	23.00'	109°56'18"
C18	7.59'	133.00'	003°16'10"
C19	23.18'	25.00'	053°07'48"
C20	53.97'	45.00'	089°42'51"
C21	96.45'	45.00'	074°24'56"

CURVE	LENGTH	RADIUS	DELTA
C22	57.60'	45.00'	073°20'19"
C23	54.91'	45.00'	089°47'29"
C24	23.18'	25.00'	053°07'48"
C25	26.37'	167.00'	009°02'49"
C26	39.06'	25.00'	089°30'51"
C27	63.72'	383.00'	009°31'59"
C28	69.79'	417.00'	009°35'23"
C29	42.23'	25.00'	086°47'35"
C30	6.49'	133.00'	002°47'40"
C31	23.18'	25.00'	053°07'48"
C32	41.73'	45.00'	053°07'48"
C33	70.69'	45.00'	090°00'00"
C34	57.60'	45.00'	073°20'19"
C35	54.91'	45.00'	089°47'29"
C36	23.18'	25.00'	053°07'48"
C37	16.83'	167.00'	005°46'29"
C38	37.60'	25.00'	086°11'02"
C39	189.04'	133.00'	079°42'59"
C40	96.32'	130.00'	042°27'11"
C41	81.87'	130.00'	036°05'07"
C44	128.66'	177.01'	041°38'39"

CURVE	LENGTH	RADIUS	DELTA
C22	57.60'	45.00'	073°20'19"
C23	54.91'	45.00'	089°47'29"
C24	23.18'	25.00'	053°07'48"
C25	26.37'	167.00'	009°02'49"
C26	39.06'	25.00'	089°30'51"
C27	63.72'	383.00'	009°31'59"
C28	69.79'	417.00'	009°35'23"
C29	42.23'	25.00'	086°47'35"
C30	6.49'	133.00'	002°47'40"
C31	23.18'	25.00'	053°07'48"
C32	41.73'	45.00'	053°07'48"
C33	70.69'	45.00'	090°00'00"
C34	57.60'	45.00'	073°20'19"
C35	54.91'	45.00'	089°47'29"
C36	23.18'	25.00'	053°07'48"
C37	16.83'	167.00'	005°46'29"
C38	37.60'	25.00'	086°11'02"
C39	189.04'	133.00'	079°42'59"
C40	96.32'	130.00'	042°27'11"
C41	81.87'	130.00'	036°05'07"
C44	128.66'	177.01'	041°38'39"

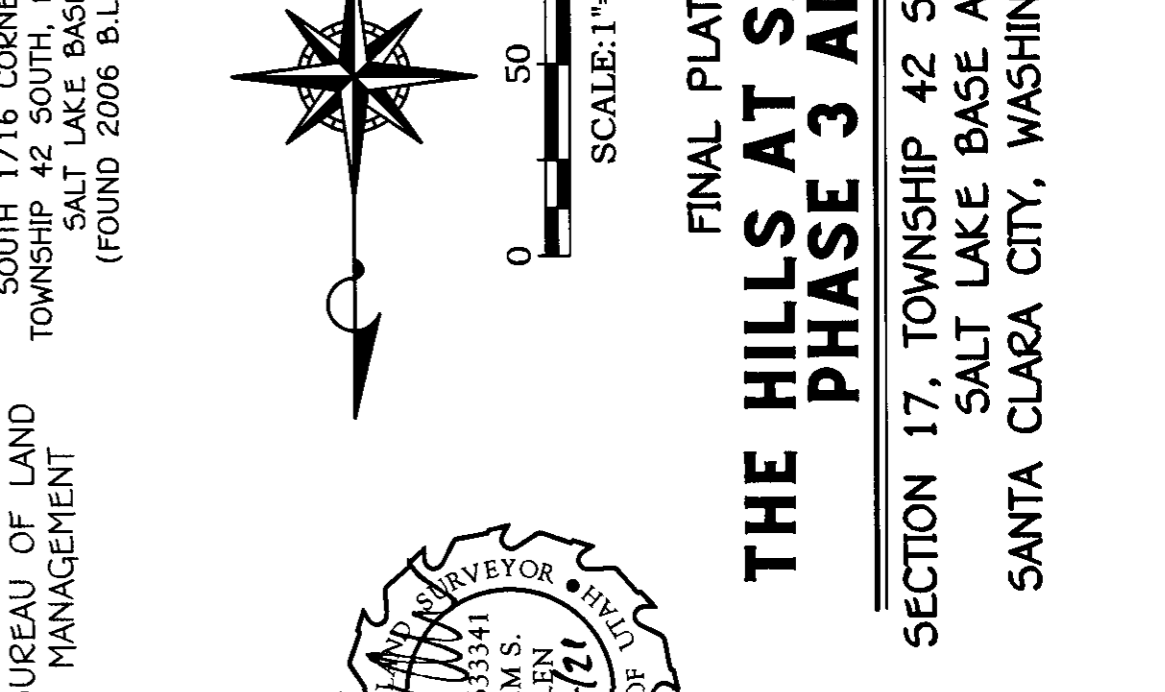
AMENDMENT NOTE:
 THE PURPOSE OF THIS AMENDMENT IS TO COMBINE LOTS 300 AND 304 INTO ONE LOT KNOWN AS LOT 300 TO COMBINE LOTS 310 AND 319 INTO ONE LOT KNOWN AS LOT 310 TO MODIFY THE NO BUILD AREA ON THE NEW LOT 310 SO THAT THE LOT CAN FRONT HILLSIDE DRIVE, AND TO COMBINE LOTS 323 AND 324 INTO ONE LOT KNOWN AS LOT 323. NO OTHER CHANGES WERE MADE OR INTENDED TO BE MADE ON THIS PLAT. FOR ALL OTHER LOTS PLEASE SEE THE HILLS AT SANTA CLARA PHASE 3 FINAL PLAT.

LEGEND:
 FOUND SECTION MONUMENTATION AS SHOWN AND DESCRIBED
 CLASS I MONUMENT TO BE SET
 CLASS II MONUMENT TO BE SET
 CLASS I MONUMENT - EXISTING
 CLASS II MONUMENT - EXISTING
 NOTHING SET OR FOUND
 5/8" REBAR AND CAP (ROSENBERG ASSOCIATES)
 FRONT PROPERTY CORNERS OFFSET 7.0' WITHIN THE LOT, ON LINE, IN THE SIDEWALK WITH A BRASS PLUG
 NO BUILD AREA

AMERICAN LAND CONSULTING
 1043 EAST 3740 SOUTH, WASHINGTON, UT 84780
 (435) 680-6711 / ADAM@ALCSC.COM

JOB # 21-009 DATE: 05/25/2021
 FILE: AMD PLAT.DWG SCALE: 1"=50'

FINAL PLAT OF:
THE HILLS AT SANTA CLARA
PHASE 3 AMENDED
 SECTION 17, TOWNSHIP 42 SOUTH, RANGE 16 WEST
 SALT LAKE BASE AND MERIDIAN
 SANTA CLARA CITY, WASHINGTON COUNTY, UTAH
SHEET 2 OF 2



SOUTH 1/16 CORNER, SECTION 17,
 TOWNSHIP 42 SOUTH, RANGE 16 WEST
 SALT LAKE BASE AND MERIDIAN
 (FOUND 2006 B.L.M. BRASS CAP)

BUREAU OF LAND
 MANAGEMENT

SOUTH 1/16 CORNER, SECTION 17,
 TOWNSHIP 42 SOUTH, RANGE 16 WEST
 SALT