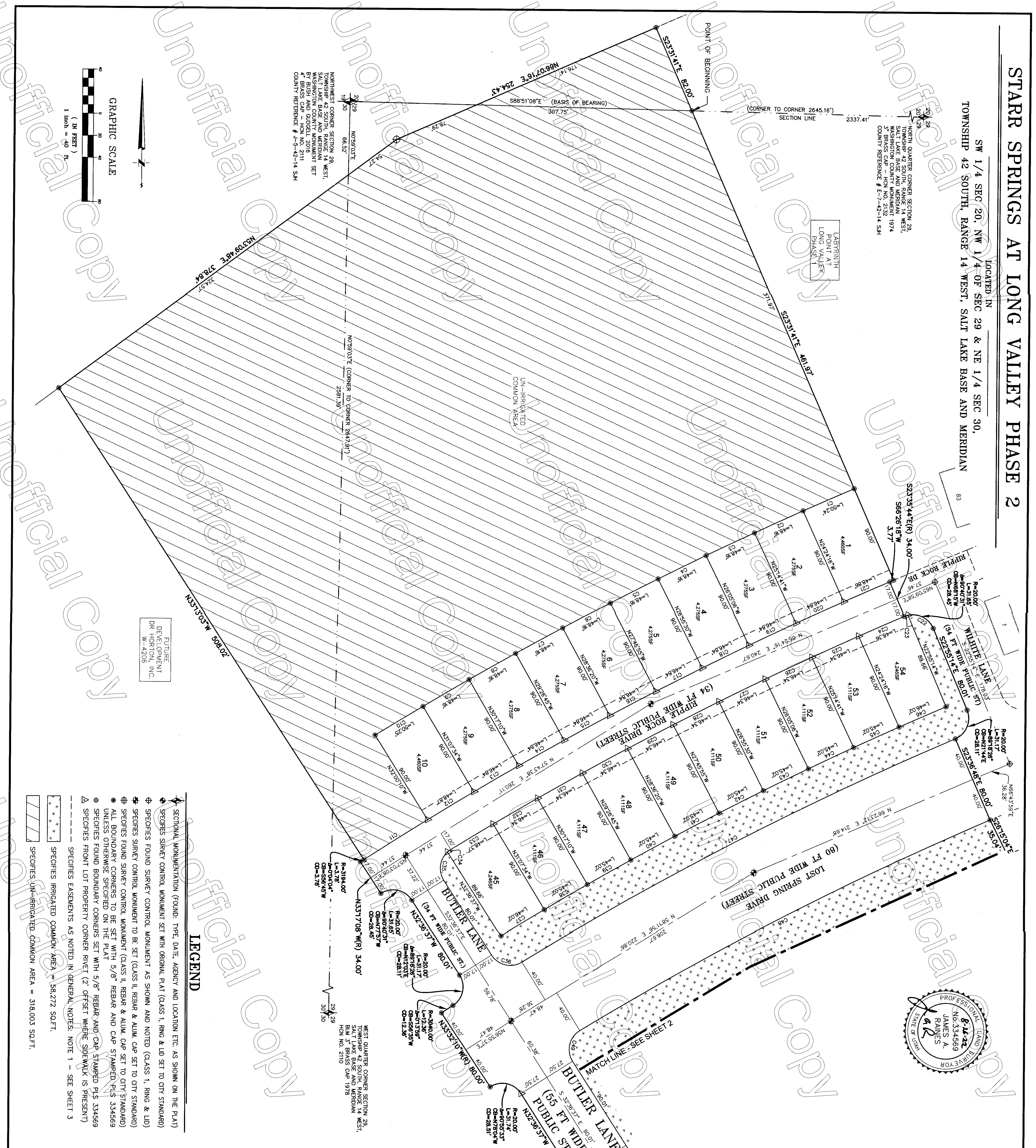


STARR SPRINGS AT LONG VALLEY PHASE 2

LOCATED IN
 SW 1/4 SEC 20, NW 1/4 OF SEC 29 & NE 1/4 SEC 30,
 TOWNSHIP 42 SOUTH, RANGE 14 WEST, SALT LAKE BASE AND MERIDIAN

PROFESSIONAL LAND SURVEYOR
 JAMES A. RAINES
 No. 334569
 STATE OF UTAH



- LEGEND**
- SECTIONAL MONUMENTATION (FOUND, TYPE, DATE, AGENCY AND LOCATION ETC. AS SHOWN ON THE PLAT)
 - RECORDS SURVEY CONTROL MONUMENT SET WITH ORIGINAL PLAT (CLASS 1, RING & LID SET TO CITY STANDARD)
 - SPECIES FOUND SURVEY CONTROL MONUMENT AS SHOWN AND NOTED (CLASS 1, RING & LID)
 - SPECIES SURVEY CONTROL MONUMENT TO BE SET (CLASS II, REBAR & ALUM. CAP SET TO CITY STANDARD)
 - SPECIES FOUND SURVEY CONTROL MONUMENT (CLASS II, REBAR & ALUM. CAP SET TO CITY STANDARD)
 - ALL BOUNDARY CORNERS TO BE SET WITH 5/8" REBAR AND ALUM. CAP STAMPED PLS 334569 UNLESS OTHERWISE SPECIFIED ON THE PLAT
 - SPECIES FOUND BOUNDARY CORNERS SET WITH 5/8" REBAR AND ALUM. CAP STAMPED PLS 334569 (IF PRESENT)
 - SPECIES FRONT LOT PROPERTY CORNER RIVER (Z) OFFSET WHERE SIDEWALK IS PRESENT
 - SPECIES EASEMENTS AS NOTED IN GENERAL NOTES, NOTE 1 - SEE SHEET 3
 - SPECIES UN-IRRIGATED COMMON AREA = 318,003 SQ.FT.
 - SPECIES IRRIGATED COMMON AREA = 38,272 SQ.FT.

CURVE TABLE

CURVE NO.	RADIUS	LENGTH	DELTA	CHORD DIRECTION	CHORD LENGTH
C1	3284.00'	50.24'	0°52'36"	S66°02'02"W	50.24'
C2	3284.00'	48.16'	0°50'25"	S65°10'32"W	48.16'
C3	3284.00'	48.16'	0°50'25"	S64°20'07"W	48.16'
C4	3284.00'	48.16'	0°50'25"	S63°29'42"W	48.16'
C5	3284.00'	48.16'	0°50'25"	S62°39'17"W	48.16'
C6	3284.00'	48.16'	0°50'25"	S61°48'52"W	48.16'
C7	3284.00'	48.16'	0°50'25"	S60°58'28"W	48.16'
C8	3284.00'	48.16'	0°50'25"	S60°08'03"W	48.16'
C9	3284.00'	48.16'	0°50'25"	S59°17'38"W	48.16'
C10	3284.00'	50.25'	0°52'36"	S58°26'08"W	50.24'
C11	3194.00'	67.72'	1°12'53"	S57°33'23"W	67.72'
C12	3194.00'	48.87'	0°52'36"	S56°39'08"W	48.87'
C13	3194.00'	46.84'	0°50'25"	S55°47'38"W	46.84'
C14	3194.00'	46.84'	0°50'25"	S54°56'03"W	46.84'
C15	3194.00'	46.84'	0°50'25"	S54°04'28"W	46.84'
C16	3194.00'	46.84'	0°50'25"	S53°12'53"W	46.84'
C17	3194.00'	46.84'	0°50'25"	S52°21'28"W	46.84'
C18	3194.00'	46.84'	0°50'25"	S51°29'53"W	46.84'
C19	3194.00'	46.84'	0°50'25"	S50°38'28"W	46.84'
C20	3194.00'	46.84'	0°50'25"	S49°46'53"W	46.84'
C21	3194.00'	45.09'	0°48'32"	S48°55'28"W	45.09'
C22	20.00'	27.90'	79°55'17"	N62°52'52"W	25.89'
C23	20.00'	3.75'	10°45'14"	S71°46'53"W	3.75'
C24	3160.00'	44.61'	0°48'32"	S68°00'00"W	44.61'
C25	3160.00'	46.34'	0°50'25"	S65°10'32"W	46.34'

CURVE TABLE

CURVE NO.	RADIUS	LENGTH	DELTA	CHORD DIRECTION	CHORD LENGTH
C26	3160.00'	46.34'	0°50'25"	S64°20'07"W	46.34'
C27	3160.00'	46.34'	0°50'25"	S63°29'42"W	46.34'
C28	3160.00'	46.34'	0°50'25"	S62°39'17"W	46.34'
C29	3160.00'	46.34'	0°50'25"	S61°48'52"W	46.34'
C30	3160.00'	46.34'	0°50'25"	S60°58'28"W	46.34'
C31	3160.00'	46.34'	0°50'25"	S60°08'03"W	46.34'
C32	3160.00'	46.34'	0°50'25"	S59°17'38"W	46.34'
C33	3160.00'	44.62'	0°48'32"	S58°26'08"W	44.62'
C34	20.00'	3.75'	10°45'14"	S57°33'23"W	3.75'
C35	20.00'	27.90'	79°55'17"	S72°10'11"W	25.89'
C36	20.00'	31.17'	89°18'28"	S77°15'50"E	28.11'
C37	3070.00'	46.02'	0°51'32"	S58°26'40"W	46.02'
C38	3070.00'	45.02'	0°50'25"	S59°17'38"W	45.02'
C39	3070.00'	45.02'	0°50'25"	S60°08'03"W	45.02'
C40	3070.00'	45.02'	0°50'25"	S60°98'03"W	45.02'
C41	3070.00'	45.02'	0°50'25"	S61°48'52"W	45.02'
C42	3070.00'	45.02'	0°50'25"	S62°39'17"W	45.02'
C43	3070.00'	45.02'	0°50'25"	S63°29'42"W	45.02'
C44	3070.00'	45.02'	0°50'25"	S64°20'07"W	45.02'
C45	3070.00'	45.02'	0°50'25"	S65°10'32"W	45.02'
C46	3070.00'	46.02'	0°51'32"	S66°01'30"W	46.02'
C47	3040.00'	440.61'	81°8'15"	S62°14'05"W	440.22'
C48	2960.00'	416.98'	80°4'17"	S62°21'04"W	416.63'
C49	20.00'	31.74'	90°55'33"	S12°51'09"W	28.51'

STARR SPRINGS AT LONG VALLEY PHASE 2

LOCATED IN
 SW 1/4 SEC 20, NW 1/4 OF SEC 29 & NE 1/4 SEC 30,
 TOWNSHIP 42 SOUTH, RANGE 14 WEST, SALT LAKE BASE AND MERIDIAN

Drawn: MDR Date: FEB. 2022
 Email: MDR
 Checked: JAR
 Approved: JAR
 Scale: 1" = 40'
 Job No: 211003

SHEET 1
 SHEETS 3

HIGH POINT ENGINEERING & SURVEYING
 ENGINEERING - PLANNING - SURVEYING
 1360 WEST 2130 SOUTH
 ST. GEORGE UT 84770
 OFFICE (435) 668-5293 - SURVEY SCHEDULE (435) 256-2109

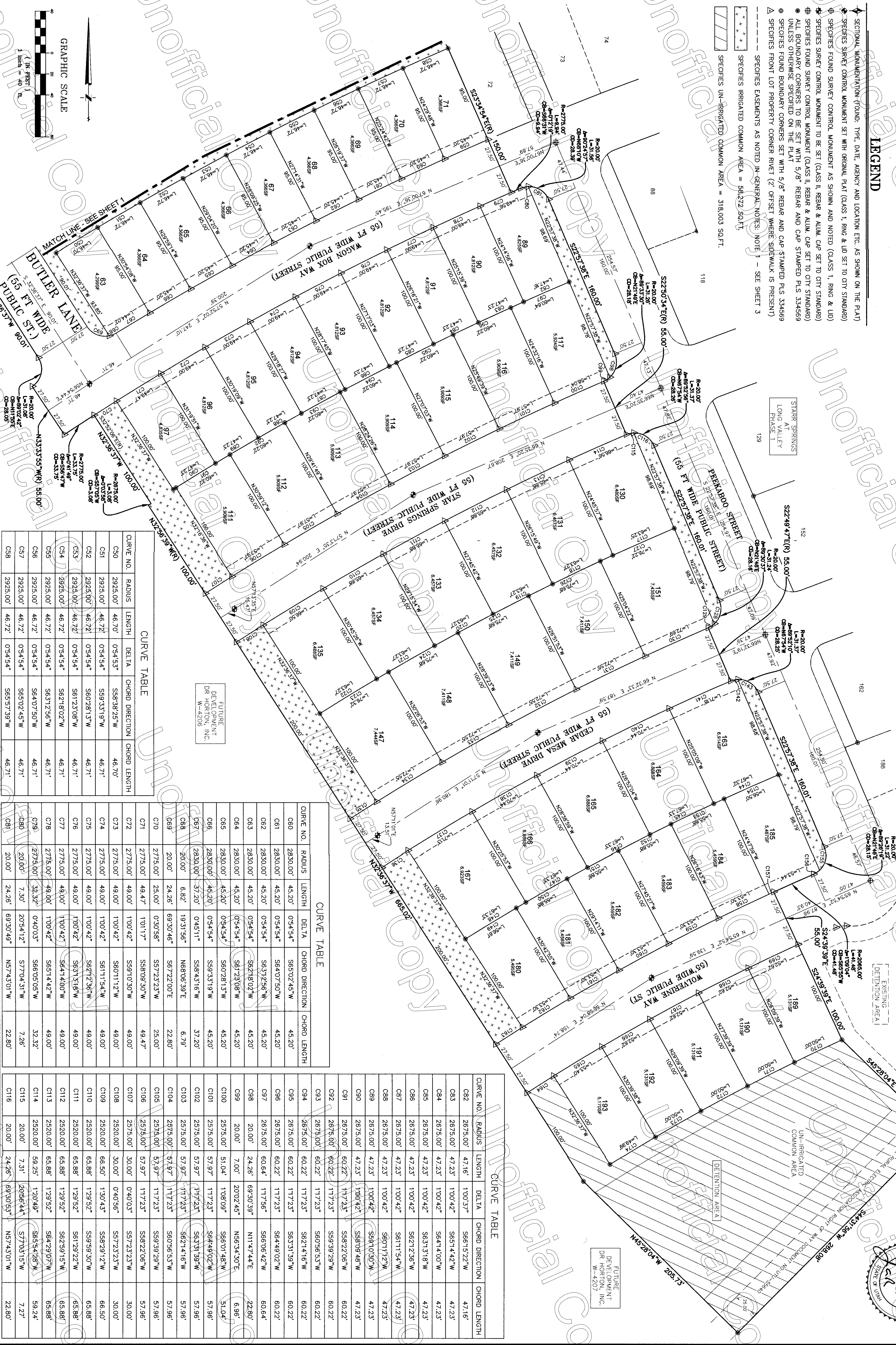
No.	Date	By	Revision

STARR SPRINGS AT LONG VALLEY PHASE 2

LOCATED IN SW 1/4 SEC 20, NW 1/4 OF SEC 29 & NE 1/4 SEC 30, TOWNSHIP 42 SOUTH, RANGE 14 WEST, SALT LAKE BASE AND MERIDIAN

LEGEND

- SECTIONAL MONUMENTATION (FOUND, TYPE, DATE, AGENCY AND LOCATION ETC. AS SHOWN ON THE PLAN)
- SPECIES SURVEY CONTROL MONUMENT SET WITH ORIGINAL PLAT (CLASS 1, RING & LID SET TO CITY STANDARD)
- SPECIES FOUND SURVEY CONTROL MONUMENT AS SHOWN AND NOTED (CLASS 1, RING & LID)
- SPECIES SURVEY CONTROL MONUMENT TO BE SET (CLASS II, REBAR & ALUM. CAP SET TO CITY STANDARD)
- SPECIES FOUND SURVEY CONTROL MONUMENT (CLASS II, REBAR & ALUM. CAP SET TO CITY STANDARD)
- ALL BOUNDARY CORNERS TO BE SET WITH 5/8" REBAR AND ALUM. CAP STAMPED PLS 334569 UNLESS OTHERWISE SPECIFIED ON THE PLAN
- SPECIES FOUND BOUNDARY CORNERS SET WITH 5/8" REBAR AND CAP STAMPED PLS 334569
- SPECIES FOUND LOT PROPERTY CORNER RIVET (Z OFFSET WHERE SIDEWALK IS PRESENT)
- SPECIES FOUND COMMON AREA = 568272 SQ.FT.
- SPECIES FOUND COMMON AREA = 318,003 SQ.FT.



CURVE TABLE

CURVE NO.	RADIUS	LENGTH	DELTA	CHORD DIRECTION	CHORD LENGTH
C30	2925.00'	46.70'	0°54'53"	S89°38'25"W	46.70'
C31	2925.00'	46.72'	0°54'54"	S89°33'19"W	46.71'
C32	2925.00'	46.72'	0°54'54"	S80°28'13"W	46.71'
C33	2925.00'	46.72'	0°54'54"	S61°23'08"W	46.71'
C34	2925.00'	46.72'	0°54'54"	S62°18'02"W	46.71'
C35	2925.00'	46.72'	0°54'54"	S63°12'56"W	46.71'
C36	2925.00'	46.72'	0°54'54"	S64°07'50"W	46.71'
C37	2925.00'	46.72'	0°54'54"	S65°02'45"W	46.71'
C38	2925.00'	46.72'	0°54'54"	S65°57'39"W	46.71'

CURVE TABLE

CURVE NO.	RADIUS	LENGTH	DELTA	CHORD DIRECTION	CHORD LENGTH
C60	2830.00'	45.20'	0°54'54"	S85°02'45"W	45.20'
C61	2830.00'	45.20'	0°54'54"	S84°07'50"W	45.20'
C62	2830.00'	45.20'	0°54'54"	S83°12'56"W	45.20'
C63	2830.00'	45.20'	0°54'54"	S82°18'02"W	45.20'
C64	2830.00'	45.20'	0°54'54"	S81°23'08"W	45.20'
C65	2830.00'	45.20'	0°54'54"	S80°28'13"W	45.20'
C66	2830.00'	45.20'	0°54'54"	S79°33'19"W	45.20'
C67	2830.00'	45.20'	0°54'54"	S78°38'25"W	45.20'
C68	20.00'	6.82'	19°31'56"	N88°06'39"E	6.79'
C69	20.00'	24.26'	69°30'46"	S67°22'00"E	22.80'
C70	2775.00'	25.00'	0°30'58"	S77°23'22"W	25.00'
C71	2775.00'	49.47'	1°01'17"	S88°09'30"W	49.47'
C72	2775.00'	49.00'	1°00'42"	S99°10'30"W	49.00'
C73	2775.00'	49.00'	1°00'42"	S80°11'12"W	49.00'
C74	2775.00'	49.00'	1°00'42"	S61°11'54"W	49.00'
C75	2775.00'	49.00'	1°00'42"	S82°12'36"W	49.00'
C76	2775.00'	49.00'	1°00'42"	S83°13'18"W	49.00'
C77	2775.00'	48.00'	1°00'42"	S64°14'00"W	49.00'
C78	2775.00'	49.00'	1°00'42"	S85°14'42"W	49.00'
C79	20.00'	7.30'	2°05'41"	S77°04'31"W	7.28'
C80	20.00'	24.26'	69°30'49"	N57°43'01"W	22.80'

CURVE TABLE

CURVE NO.	RADIUS	LENGTH	DELTA	CHORD DIRECTION	CHORD LENGTH
C82	2675.00'	47.16'	1°00'37"	S66°15'22"W	47.16'
C83	2675.00'	47.23'	1°00'42"	S65°14'42"W	47.23'
C84	2675.00'	47.23'	1°00'42"	S64°14'00"W	47.23'
C85	2675.00'	47.23'	1°00'42"	S63°13'18"W	47.23'
C86	2675.00'	47.23'	1°00'42"	S62°12'36"W	47.23'
C87	2675.00'	47.23'	1°00'42"	S61°11'54"W	47.23'
C88	2675.00'	47.23'	1°00'42"	S60°11'12"W	47.23'
C89	2675.00'	47.23'	1°00'42"	S59°10'30"W	47.23'
C90	2675.00'	47.23'	1°00'42"	S58°09'48"W	47.23'
C91	2675.00'	60.22'	1°17'23"	S58°22'06"W	60.22'
C92	2675.00'	60.22'	1°17'23"	S59°39'29"W	60.22'
C93	2675.00'	60.22'	1°17'23"	S60°56'53"W	60.22'
C94	2675.00'	60.22'	1°17'23"	S62°14'16"W	60.22'
C95	2675.00'	60.22'	1°17'23"	S63°31'39"W	60.22'
C96	2675.00'	60.22'	1°17'23"	S64°49'02"W	60.22'
C97	2675.00'	60.64'	1°17'56"	S66°06'42"W	60.64'
C98	20.00'	24.26'	69°30'39"	N11°47'44"E	22.80'
C99	20.00'	7.00'	2°02'45"	N56°34'30"E	6.96'
C100	2575.00'	51.04'	1°08'09"	S66°01'48"W	51.04'
C101	2575.00'	51.97'	1°17'23"	S67°18'22"W	51.96'
C102	2575.00'	51.97'	1°17'23"	S68°34'96"W	51.96'
C103	2575.00'	51.97'	1°17'23"	S69°50'70"W	51.96'
C104	2575.00'	51.97'	1°17'23"	S71°06'44"W	51.96'
C105	2575.00'	51.97'	1°17'23"	S72°22'38"W	51.96'
C106	2575.00'	51.97'	1°17'23"	S73°38'32"W	51.96'
C107	2575.00'	30.00'	0°40'56"	S57°23'23"W	30.00'
C108	2520.00'	65.88'	1°29'52"	S84°29'07"W	65.88'
C109	2520.00'	65.88'	1°29'52"	S85°44'28"W	65.88'
C110	2520.00'	65.88'	1°29'52"	S86°59'49"W	65.88'
C111	2520.00'	65.88'	1°29'52"	S88°15'10"W	65.88'
C112	2520.00'	65.88'	1°29'52"	S89°30'31"W	65.88'
C113	2520.00'	65.88'	1°29'52"	S90°45'52"W	65.88'
C114	2520.00'	65.88'	1°29'52"	S91°61'13"W	65.88'
C115	20.00'	7.31'	2°06'44"	S77°03'15"W	7.27'
C116	20.00'	24.26'	69°30'55"	N57°43'01"W	22.80'

STARR SPRINGS AT LONG VALLEY PHASE 2
 LOCATED IN SW 1/4 SEC 20, NW 1/4 OF SEC 29 & NE 1/4 SEC 30, TOWNSHIP 42 SOUTH, RANGE 14 WEST, SALT LAKE BASE AND MERIDIAN

Drawn: MDR Date: FEB 2022
 Email: MDR
 Checked: JAR
 Approved: JAR
 Scale: 1" = 40'
 Job No.: 211003



HIGH POINT ENGINEERING & SURVEYING
 ENGINEERING - PLANNING - SURVEYING
 1360 WEST 2130 SOUTH
 ST. GEORGE UT 84770
 OFFICE: (435) 688-5293 - SURVEY SCHEDULE: (435) 256-2109



SHEETS 3
 FILE: 211003.P2

