



MAP

NAME: STARR SPRINGS AT LONG VALLEY PHASE 3

LOTS: 95 MAP: 5171

PARCEL NUMBER: W-4206 W-4207

D R HORTON INC

A PARCEL OF LAND LOCATED IN SECTIONS 29 & 30, TOWNSHIP 42 SOUTH RANGE 14 WEST SALT LAKE BASE AND MERIDIAN AND INCLUDING A PORTION OF SECTION LOT 5 OF SAID SECTION 29 & A PORTION OF SECTION LOT 13 & 18 OF SAID SECTION 30 AND BEING MORE PARTICULARLY DESCRIBED AS FOLLOWS:

BEGINNING AT A POINT LOCATED S0°59'03"W 256.52 FEET ALONG THE SECTION LINE AND N89°00'57"W 256.39 FEET FROM THE NORTHWEST CORNER OF SECTION 29, TOWNSHIP 42 SOUTH, RANGE 14 WEST, SALT LAKE BASE AND MERIDIAN, SAID POINT BEING THE TRUE POINT OF BEGINNING AND SAID POINT ALSO BEING LOCATED ON THE WESTERLY BOUNDARY OF THE "STARR SPRINGS AT LONG VALLEY PHASE 2" SUBDIVISION, RECORDED AND ON FILE AT WASHINGTON COUNTY RECORDERS OFFICE, STATE OF UTAH; RUNNING THENCE ALONG SAID WESTERLY BOUNDARY THE FOLLOWING EIGHTEEN (18) COURSES: (1) S33°13'03"E 508.02 FEET (2) TO A POINT OF A 3194.00 FOOT RADIUS NON-TANGENT CURVE TO THE LEFT, WITH A RADIUS WHICH BEARS S33°13'00"E; THENCE ALONG THE ARC OF SAID CURVE 3.78 FEET THROUGH A CENTRAL ANGLE OF 0°04'04"; (3) THENCE S33°17'08"E 34.00 FEET (4) TO A POINT OF A 20.00 FOOT RADIUS NON-TANGENT CURVE TO THE RIGHT, WITH A RADIUS WHICH BEARS S33°17'08"E; THENCE ALONG THE ARC OF SAID CURVE 31.65 FEET THROUGH A CENTRAL ANGLE OF 90°40'31"; (5) THENCE S32°36'37"E 80.01 FEET; (6) TO THE POINT OF A 20.00 FOOT RADIUS CURVE TO THE RIGHT; THENCE ALONG THE ARC OF SAID CURVE 31.17 FEET THROUGH A CENTRAL ANGLE OF 89°18'26"; (7) TO THE POINT OF A 3040.00 FOOT RADIUS REVERSE CURVE TO THE LEFT; THENCE ALONG THE ARC OF SAID CURVE 12.36 FEET THROUGH A CENTRAL ANGLE OF 0°13'59"; (8) THENCE S33°32'10"E 80.00 FEET (9) TO A POINT OF A 20.00 FOOT RADIUS NON-TANGENT CURVE TO THE RIGHT, WITH A RADIUS WHICH BEARS S33°32'10"E; THENCE ALONG THE ARC OF SAID CURVE 31.74 FEET THROUGH A CENTRAL ANGLE OF 90°55'33"; (10) THENCE S32°36'37"E 80.01 FEET (11) TO THE POINT OF A 20.00 FOOT RADIUS CURVE TO THE RIGHT; THENCE ALONG THE ARC OF SAID CURVE 31.08 FEET THROUGH A CENTRAL ANGLE OF 89°02'42"; (12) THENCE S33°33'55"E 55.00 FEET (13) TO A POINT OF A 2775.00 FOOT RADIUS NON-TANGENT CURVE TO THE RIGHT, WITH A RADIUS WHICH BEARS S33°33'55"E; THENCE ALONG THE ARC OF SAID CURVE 33.75 FEET THROUGH A CENTRAL ANGLE OF 0°41'49"; (14) THENCE S32°36'37"E 100.00 FEET (15) TO A POINT OF A 2675.00 FOOT RADIUS NON-TANGENT CURVE TO THE LEFT, WITH A RADIUS WHICH BEARS S32°52'41"E; THENCE ALONG THE ARC OF SAID CURVE 3.08 FEET THROUGH A CENTRAL ANGLE OF 0°03'58"; (16) THENCE S32°56'39"E 100.00 FEET; (17) THENCE S32°36'37"E 665.02 FEET; (18) THENCE S45°28'04"E 205.73 FEET; THENCE S44°31'56"W 108.77 FEET; THENCE S43°25'39"W 395.08 FEET; THENCE S45°15'43"W 401.82 FEET; THENCE S45°19'41"W 117.74 FEET TO A POINT OF A 472.50 FOOT RADIUS NON-TANGENT CURVE TO THE RIGHT, WITH A RADIUS WHICH BEARS N66°05'33"E; THENCE ALONG THE ARC OF SAID CURVE 74.37 FEET THROUGH A CENTRAL ANGLE OF 9°01'04"; THENCE N14°53'23"W 220.26 FEET TO THE POINT OF A 527.50 FOOT RADIUS CURVE TO THE LEFT; THENCE ALONG THE ARC OF SAID CURVE 77.03 FEET THROUGH A CENTRAL ANGLE OF 8°22'02" TO THE POINT OF A 20.00 FOOT RADIUS REVERSE CURVE TO THE RIGHT; THENCE ALONG THE ARC OF SAID CURVE 29.68 FEET THROUGH A CENTRAL ANGLE OF 85°01'22"; THENCE N28°14'02"W 55.00 FEET; THENCE N61°45'58"E 4.67 FEET TO THE POINT OF A 122.50 FOOT RADIUS CURVE TO THE LEFT; THENCE ALONG THE ARC OF SAID CURVE 44.50 FEET THROUGH A CENTRAL ANGLE OF 20°43'04"; THENCE N41°02'54"E 394.81 FEET; TO THE POINT OF A 177.50 FOOT RADIUS CURVE TO THE RIGHT; THENCE ALONG THE ARC OF SAID CURVE 2.46 FEET THROUGH A CENTRAL ANGLE OF 0°47'41" TO THE POINT OF A 20.00 FOOT RADIUS REVERSE CURVE TO THE LEFT; THENCE ALONG THE ARC OF SAID CURVE 28.98 FEET THROUGH A CENTRAL ANGLE OF 83°00'35"; THENCE N41°00'00"W 161.47 FEET; TO THE POINT OF A 20.00 FOOT RADIUS CURVE TO THE LEFT; THENCE ALONG THE ARC OF SAID CURVE 51.42 FEET THROUGH A CENTRAL ANGLE OF 90°00'00"; THENCE N41°10'00"W 55.00 FEET TO A POINT OF A 20.00 FOOT RADIUS NON-TANGENT CURVE TO THE LEFT, WITH A RADIUS WHICH BEARS N41°10'00"W; THENCE ALONG THE ARC OF SAID CURVE 31.42 FEET THROUGH A CENTRAL ANGLE OF 90°00'00"; THENCE N41°10'00"W 599.93 FEET TO THE POINT OF A 20.00 FOOT RADIUS CURVE TO THE LEFT; THENCE ALONG THE ARC OF SAID CURVE 31.51 FEET THROUGH A CENTRAL ANGLE OF 90°16'12"; THENCE N41°26'12"W 80.00 FEET TO A POINT OF A 6040.00 FOOT RADIUS NON-TANGENT CURVE TO THE LEFT, WITH A RADIUS WHICH BEARS S41°26'12"E; THENCE ALONG THE ARC OF SAID CURVE 298.63 FEET THROUGH A CENTRAL ANGLE OF 2°49'58"; THENCE N45°36'23"W 117.51 FEET; THENCE N52°34'28"W 34.00 FEET TO A POINT OF A 267.00 FOOT RADIUS NON-TANGENT CURVE TO THE RIGHT, WITH A RADIUS WHICH BEARS S52°34'28"E; THENCE ALONG THE ARC OF SAID CURVE 8.39 FEET THROUGH A CENTRAL ANGLE OF 1°47'58"; THENCE N50°46'30"W 104.63 FEET; THENCE N9°57'59"W 47.34 FEET; THENCE N22°42'39"W 117.41 FEET; THENCE N41°21'21"E 476.30 FEET; THENCE N36°26'25"W 196.75 FEET TO A POINT LOCATED ON THE SOUTHERN RIGHT OF WAY LINE OF THE SOUTHERN PARKWAY; THENCE ALONG SAID SOUTHERN RIGHT OF WAY LINE THE FOLLOWING TWO (2) COURSES: (1) N53°11'39"E 298.86 FEET; (2) THENCE N53°09'38"E 94.07 FEET TO THE POINT OF BEGINNING.

CONTAINS 1,261,462 SQ FT OR 28.96 ACRES MORE LESS

# STARR SPRINGS AT LONG VALLEY PHASE 3

LOCATED IN  
NW 1/4 OF SEC 29 & NE 1/4 SEC 30,  
TOWNSHIP 42 SOUTH, RANGE 14 WEST, SALT LAKE BASE AND MERIDIAN

CURVE TABLE					
CURVE NO.	RADIUS	LENGTH	DELTA	CHORD DIRECTION	CHORD LENGTH
C78	6160.00'	45.67'	0.2529°	S46°47'23"W	45.67'
C79	6160.00'	45.67'	0.2529°	S46°21'54"W	45.67'
C80	6160.00'	13.25'	0.0724°	S46°05'28"W	13.25'
C81	233.00'	34.99'	8°36'14"	S41°43'39"W	34.96'
C82	6070.00'	45.00'	0.2529°	S46°47'23"W	45.00'
C83	6070.00'	45.00'	0.2529°	S46°47'23"W	45.00'
C84	6070.00'	45.00'	0.2529°	S47°12'53"W	45.00'
C85	6070.00'	45.00'	0.2529°	S47°38'22"W	45.00'
C86	6070.00'	45.00'	0.2529°	S48°03'51"W	45.00'
C87	6070.00'	45.00'	0.2529°	S48°29'20"W	45.00'
C88	6040.00'	11.03'	0.0617°	S48°56'56"W	11.03'
C89	20.00'	31.56'	88°36'05"	N3°45'02"E	28.28'
C90	20.00'	31.42'	90°00'00"	S86°10'00"E	28.28'
C91	3070.00'	19.98'	0.2222°	S49°01'11"W	19.98'
C92	3070.00'	45.00'	0.5023°	S49°37'33"W	45.00'

CURVE TABLE					
CURVE NO.	RADIUS	LENGTH	DELTA	CHORD DIRECTION	CHORD LENGTH
C93	3070.00'	45.00'	0.5023°	S50°27'57"W	45.00'
C94	3070.00'	45.00'	0.5023°	S51°18'20"W	45.00'
C95	3070.00'	45.00'	0.5023°	S52°08'44"W	45.00'
C96	3070.00'	45.00'	0.5023°	S52°59'07"W	45.00'
C97	3070.00'	45.00'	0.5023°	S53°49'31"W	45.00'
C98	3070.00'	45.00'	0.5023°	S54°39'54"W	45.00'
C99	3070.00'	45.00'	0.5023°	S55°30'18"W	45.00'
C100	3070.00'	45.00'	0.5023°	S56°20'41"W	45.00'
C101	3040.00'	404.87'	7°37'51"	S52°38'55"W	404.57'
C102	2960.00'	394.22'	7°37'51"	S52°38'55"W	393.92'
C103	20.00'	31.42'	90°00'00"	S33°50'00"W	28.28'



CURVE TABLE					
CURVE NO.	RADIUS	LENGTH	DELTA	CHORD DIRECTION	CHORD LENGTH
C1	20.00'	3.76'	10°46'55"	S62°06'20"W	3.76'
C2	20.00'	27.89'	79°53'36"	N72°33'25"W	25.68'
C3	20.00'	3.53'	10°06'24"	S43°46'48"W	3.52'
C4	20.00'	27.89'	79°53'36"	S11°31'12"E	26.68'
C5	20.00'	27.90'	79°55'17"	N81°07'39"W	25.69'
C6	20.00'	3.58'	10°14'30"	S63°47'28"W	3.57'
C7	3384.00'	49.15'	0°51'27"	S66°21'13"W	49.15'
C8	3384.00'	48.14'	0°50'23"	S55°30'18"W	48.14'
C9	3384.00'	48.14'	0°50'23"	S44°39'54"W	48.14'
C10	3384.00'	48.14'	0°50'23"	S53°49'31"W	48.14'
C11	3384.00'	48.14'	0°50'23"	S52°59'07"W	48.14'
C12	3384.00'	48.14'	0°50'23"	S52°08'44"W	48.14'
C13	3384.00'	48.14'	0°50'23"	S51°18'20"W	48.14'
C14	3384.00'	48.14'	0°50'23"	S50°27'57"W	48.14'
C15	3384.00'	48.14'	0°50'23"	S49°37'33"W	48.14'
C16	3384.00'	21.37'	0°22'22"	S49°01'11"W	21.37'
C17	6284.00'	46.80'	0°25'36"	S48°29'23"W	46.80'
C18	6284.00'	46.59'	0°25'29"	S48°03'51"W	46.59'
C19	6284.00'	46.59'	0°25'29"	S47°38'22"W	46.59'
C20	6284.00'	46.59'	0°25'29"	S47°12'53"W	46.59'
C21	6284.00'	46.59'	0°25'29"	S46°47'23"W	46.59'
C22	6284.00'	46.59'	0°25'29"	S46°21'54"W	46.59'
C23	6284.00'	46.59'	0°25'29"	S45°56'56"W	46.59'
C24	6284.00'	46.59'	0°25'29"	S45°31'27"W	46.59'
C25	6284.00'	46.59'	0°25'29"	S45°05'58"W	46.59'
C26	6284.00'	46.59'	0°25'29"	S44°40'29"W	46.59'
C27	6284.00'	46.59'	0°25'29"	S44°14'59"W	46.59'
C28	6284.00'	46.59'	0°25'29"	S43°49'29"W	46.59'
C29	3284.00'	48.14'	0°50'23"	S44°39'54"W	48.14'
C30	3384.00'	48.14'	0°50'23"	S53°49'31"W	48.14'
C31	3384.00'	48.14'	0°50'23"	S52°59'07"W	48.14'
C32	3384.00'	48.14'	0°50'23"	S52°08'44"W	48.14'
C33	3384.00'	48.14'	0°50'23"	S51°18'20"W	48.14'
C34	3384.00'	48.14'	0°50'23"	S50°27'57"W	48.14'
C35	3384.00'	48.14'	0°50'23"	S49°37'33"W	48.14'
C36	3384.00'	21.37'	0°22'22"	S49°01'11"W	21.37'
C37	6284.00'	46.80'	0°25'36"	S48°29'23"W	46.80'
C38	6284.00'	46.59'	0°25'29"	S48°03'51"W	46.59'
C39	6284.00'	46.59'	0°25'29"	S47°38'22"W	46.59'
C40	6284.00'	46.59'	0°25'29"	S47°12'53"W	46.59'
C41	6284.00'	46.59'	0°25'29"	S46°47'23"W	46.59'
C42	6284.00'	46.59'	0°25'29"	S46°21'54"W	46.59'
C43	6284.00'	46.59'	0°25'29"	S45°56'56"W	46.59'
C44	357.00'	42.40'	6°48'16"	S42°37'38"W	42.37'
C45	267.00'	31.71'	6°48'16"	S46°05'28"W	31.69'
C46	6194.00'	13.33'	0°07'24"	S46°21'54"W	13.33'
C47	6194.00'	45.92'	0°25'29"	S46°47'23"W	45.92'
C48	6194.00'	45.92'	0°25'29"	S46°21'54"W	45.92'
C49	6194.00'	45.92'	0°25'29"	S45°56'56"W	45.92'
C50	6194.00'	45.92'	0°25'29"	S45°31'27"W	45.92'
C51	6194.00'	45.92'	0°25'29"	S45°05'58"W	45.92'
C52	6194.00'	46.13'	0°25'36"	S48°29'23"W	46.13'
C53	6194.00'	14.06'	0°07'48"	S48°04'08"W	14.06'
C54	3194.00'	20.78'	0°22'22"	S49°01'11"W	20.78'
C55	3194.00'	46.82'	0°50'23"	S49°37'33"W	46.82'
C56	3194.00'	46.82'	0°50'23"	S50°27'57"W	46.82'
C57	3194.00'	46.82'	0°50'23"	S51°18'20"W	46.82'
C58	3194.00'	46.82'	0°50'23"	S52°08'44"W	46.82'
C59	3194.00'	46.82'	0°50'23"	S52°59'07"W	46.82'
C60	3194.00'	46.82'	0°50'23"	S53°49'31"W	46.82'
C61	3194.00'	46.82'	0°50'23"	S54°39'54"W	46.82'
C62	3194.00'	46.82'	0°50'23"	S55°30'18"W	46.82'
C63	3194.00'	44.02'	0°47'23"	S55°19'11"W	44.02'
C64	3160.00'	43.55'	0°47'23"	S56°19'11"W	43.55'
C65	3160.00'	46.32'	0°50'23"	S54°39'54"W	46.32'
C66	3160.00'	46.32'	0°50'23"	S53°49'31"W	46.32'
C67	3160.00'	46.32'	0°50'23"	S52°59'07"W	46.32'
C68	3160.00'	46.32'	0°50'23"	S52°08'44"W	46.32'
C69	3160.00'	46.32'	0°50'23"	S51°18'20"W	46.32'
C70	3160.00'	46.32'	0°50'23"	S50°27'57"W	46.32'
C71	3160.00'	46.32'	0°50'23"	S49°37'33"W	46.32'
C72	3160.00'	20.56'	0°22'22"	S49°01'11"W	20.56'
C73	3160.00'	45.67'	0°25'29"	S48°29'23"W	45.67'
C74	3160.00'	45.67'	0°25'29"	S48°03'51"W	45.67'
C75	3160.00'	45.67'	0°25'29"	S47°38'22"W	45.67'
C76	3160.00'	45.67'	0°25'29"	S47°12'53"W	45.67'
C77	3160.00'	45.67'	0°25'29"	S46°47'23"W	45.67'

CURVE TABLE					
CURVE NO.	RADIUS	LENGTH	DELTA	CHORD DIRECTION	CHORD LENGTH
C78	6160.00'	45.67'	0.2529°	S46°47'23"W	45.67'
C79	6160.00'	45.67'	0.2529°	S46°21'54"W	45.67'
C80	6160.00'	13.25'	0.0724°	S46°05'28"W	13.25'
C81	233.00'	34.99'	8°36'14"	S41°43'39"W	34.96'
C82	6070.00'	45.00'	0.2529°	S46°47'23"W	45.00'
C83	6070.00'	45.00'	0.2529°	S46°47'23"W	45.00'
C84	6070.00'	45.00'	0.2529°	S47°12'53"W	45.00'
C85	6070.00'	45.00'	0.2529°	S47°38'22"W	45.00'
C86	6070.00'	45.00'	0.2529°	S48°03'51"W	45.00'
C87	6070.00'	45.00'	0.2529°	S48°29'20"W	45.00'
C88	6040.00'	11.03'	0.0617°	S48°56'56"W	11.03'
C89	20.00'	31.56'	88°36'05"	N3°45'02"E	28.28'
C90	20.00'	31.42'	90°00'00"	S86°10'00"E	28.28'
C91	3070.00'	19.98'	0.2222°	S49°01'11"W	19.98'
C92	3070.00'	45.00'	0.5023°	S49°37'33"W	45.00'

**STARR SPRINGS AT LONG VALLEY PHASE 3**

LOCATED IN  
NW 1/4 OF SEC 29 & NE 1/4 SEC 30,  
TOWNSHIP 42 SOUTH, RANGE 14 WEST, SALT LAKE BASE AND MERIDIAN

**HIGH POINT ENGINEERING & SURVEYING**  
ENGINEERING - PLANNING & SURVEYING  
1360 WEST 2130 SOUTH  
ST. GEORGE UT 84770  
OFFICE (435) 688-5293 - SURVEY SCHEDULE (435) 256-2109

PROFESSIONAL LAND SURVEYOR  
JAMES A. JAMES  
No. 334569  
STATE OF UTAH

Drawn: MDR  
Email: MDR  
Checked: JAR  
Approved: JAR  
Scale: 1" = 40'  
Job No.: 211003

Date: SEPT. 2022

1 OF 4

# STARR SPRINGS AT LONG VALLEY PHASE 3

LOCATED IN  
NW 1/4 OF SEC 29 & NE 1/4 SEC 30,  
TOWNSHIP 42 SOUTH, RANGE 14 WEST, SALT LAKE BASE AND MERIDIAN

## CURVE TABLE

CURVE NO.	RADIUS	LENGTH	DELTA	CHORD DIRECTION	CHORD LENGTH
C104	2930.00'	33.19'	0.3956°	S49°09'28"W	33.19'
C105	2930.00'	51.77'	1.0044°	S49°59'18"W	51.77'
C106	2930.00'	51.77'	1.0044°	S51°00'02"W	51.77'
C107	2930.00'	51.77'	1.0044°	S52°00'47"W	51.77'
C108	2930.00'	51.77'	1.0044°	S53°01'31"W	51.77'
C109	2930.00'	51.77'	1.0044°	S54°02'15"W	51.77'
C110	2930.00'	51.77'	1.0044°	S55°03'00"W	51.77'
C111	2930.00'	53.27'	1.0230°	S56°04'37"W	53.27'
C112	2830.00'	43.40'	0.5243°	S55°58'43"W	43.40'
C113	2830.00'	50.00'	1.0044°	S55°03'00"W	50.00'
C114	2830.00'	50.00'	1.0044°	S54°02'15"W	50.00'
C115	2830.00'	50.00'	1.0044°	S53°01'31"W	50.00'
C116	2830.00'	50.00'	1.0044°	S52°00'47"W	50.00'
C117	2830.00'	50.00'	1.0044°	S51°00'02"W	50.00'
C118	2830.00'	50.00'	1.0044°	S49°59'18"W	50.00'
C119	2830.00'	32.05'	0.3856°	S49°09'28"W	32.05'
C120	2775.00'	43.14'	0.5326°	S48°16'43"W	43.14'
C121	2775.00'	61.83'	1.1636°	S50°21'44"W	61.83'
C122	2775.00'	61.83'	1.1636°	S51°38'20"W	61.83'
C123	2775.00'	61.83'	1.1636°	S52°54'56"W	61.83'
C124	2775.00'	61.83'	1.1636°	S54°11'31"W	61.83'
C125	2775.00'	61.83'	1.1636°	S55°28'07"W	61.83'
C126	2675.00'	44.30'	0.5656°	S56°34'53"W	44.30'
C127	2675.00'	59.60'	1.1636°	S52°54'56"W	59.60'
C128	2675.00'	59.60'	1.1636°	S54°11'31"W	59.60'
C129	2675.00'	59.60'	1.1636°	S52°54'56"W	59.60'
C130	2675.00'	59.60'	1.1636°	S51°38'20"W	59.60'
C131	2675.00'	59.60'	1.1636°	S50°21'44"W	59.60'
C132	2675.00'	41.58'	0.5326°	S49°16'43"W	41.58'
C133	2675.00'	48.38'	1.0210°	S49°21'05"W	48.38'
C134	2675.00'	67.10'	1.2614°	S50°31'7"W	67.10'
C135	2675.00'	67.10'	1.2614°	S52°01'31"W	67.10'
C136	2675.00'	67.10'	1.2614°	S53°27'46"W	67.10'
C137	2675.00'	67.10'	1.2614°	S54°54'00"W	67.10'
C138	2675.00'	67.10'	1.2614°	S56°20'14"W	67.10'
C139	2575.00'	64.59'	1.2614°	S56°20'14"W	64.59'
C140	2575.00'	64.59'	1.2614°	S54°54'00"W	64.59'
C141	2575.00'	64.59'	1.2614°	S53°27'46"W	64.59'
C142	2575.00'	64.59'	1.2614°	S52°01'31"W	64.59'
C143	2575.00'	64.59'	1.2614°	S50°31'7"W	64.59'
C144	2575.00'	46.57'	1.0210°	S49°21'05"W	46.57'
C145	2520.00'	44.48'	1.0041°	S49°20'20"W	44.48'
C146	2520.00'	63.25'	1.2617°	S50°33'49"W	63.25'
C147	2520.00'	63.25'	1.2617°	S52°00'06"W	63.25'
C148	2520.00'	63.25'	1.2617°	S53°26'22"W	63.25'
C149	2520.00'	63.25'	1.2617°	S54°52'39"W	63.25'
C150	2520.00'	63.87'	1.2708°	S56°19'21"W	63.86'

## CURVE TABLE

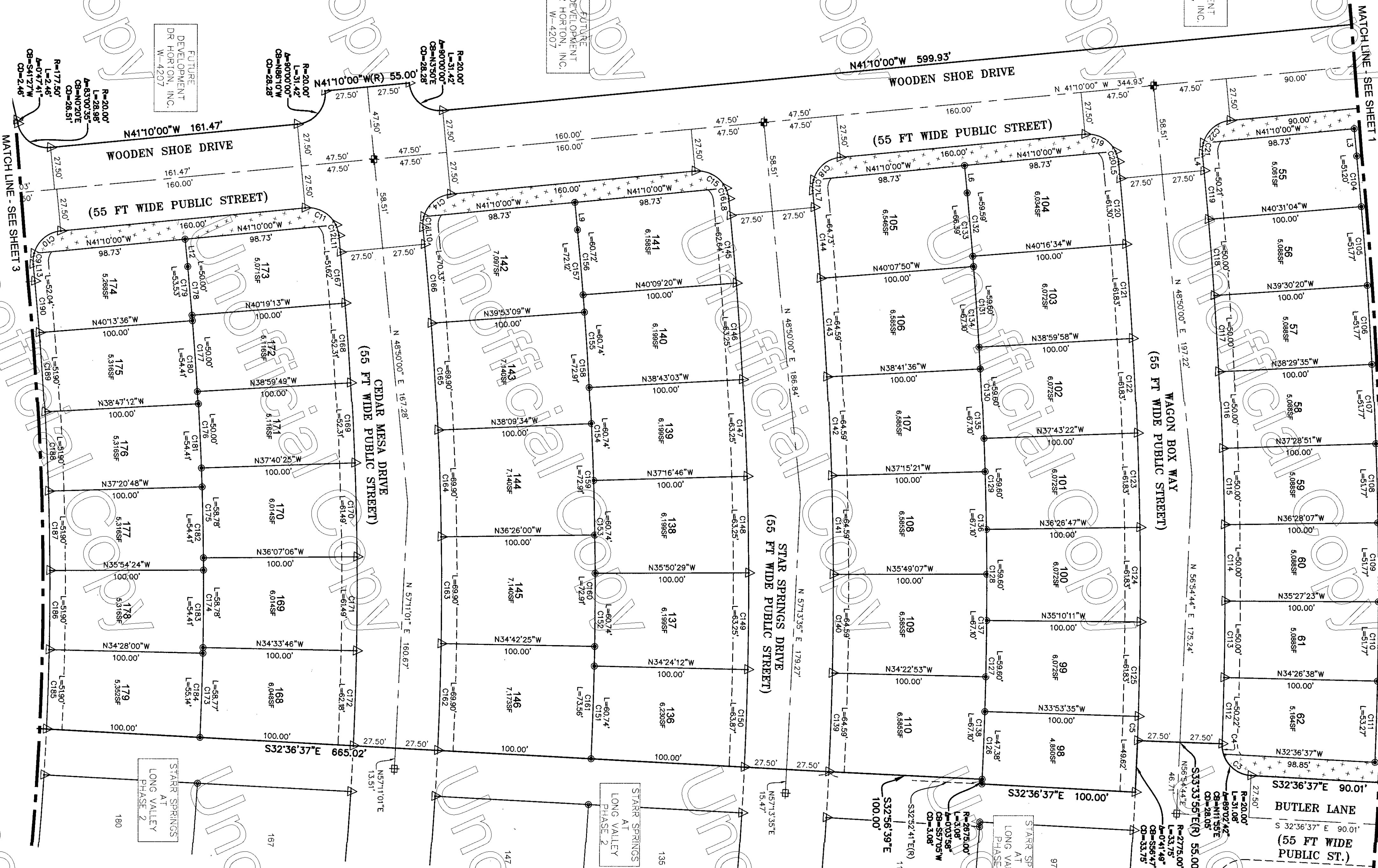
CURVE NO.	RADIUS	LENGTH	DELTA	CHORD DIRECTION	CHORD LENGTH
C151	2420.00'	60.74'	1.2617°	S56°19'56"W	60.74'
C152	2420.00'	60.74'	1.2617°	S54°52'39"W	60.74'
C153	2420.00'	60.74'	1.2617°	S53°26'22"W	60.74'
C154	2420.00'	60.74'	1.2617°	S52°00'06"W	60.74'
C155	2420.00'	60.74'	1.2617°	S50°33'49"W	60.74'
C156	2420.00'	42.71'	1.0041°	S49°20'20"W	42.71'
C157	2420.00'	54.11'	1.1652°	S48°28'26"W	54.11'
C158	2420.00'	72.91'	1.4334°	S50°58'39"W	72.91'
C159	2420.00'	72.91'	1.4334°	S52°42'13"W	72.91'
C160	2420.00'	72.91'	1.4334°	S54°25'48"W	72.91'
C161	2420.00'	73.56'	1.4430°	S56°09'50"W	73.56'
C162	2320.00'	69.90'	1.4334°	S56°09'52"W	69.90'
C163	2320.00'	69.90'	1.4334°	S54°25'48"W	69.90'
C164	2320.00'	69.90'	1.4334°	S52°42'13"W	69.90'
C165	2320.00'	69.90'	1.4334°	S50°58'39"W	69.90'
C166	2320.00'	51.87'	1.1652°	S49°28'26"W	51.87'
C167	2265.00'	52.31'	1.1924°	S50°20'29"W	52.31'
C168	2265.00'	52.31'	1.1924°	S51°39'53"W	52.31'
C169	2265.00'	52.31'	1.1924°	S52°59'53"W	52.31'
C170	2265.00'	61.49'	1.3320°	S53°06'15"W	61.49'
C171	2265.00'	61.49'	1.3320°	S54°39'34"W	61.49'
C172	2265.00'	62.18'	1.3422°	S56°13'26"W	62.18'
C173	2165.00'	58.77'	1.3319°	S56°12'54"W	58.77'
C174	2165.00'	58.78'	1.3320°	S54°39'34"W	58.78'
C175	2165.00'	58.78'	1.3320°	S53°06'15"W	58.78'
C176	2165.00'	50.00'	1.1924°	S51°39'53"W	50.00'
C177	2165.00'	50.00'	1.1924°	S50°20'29"W	50.00'
C178	2165.00'	31.99'	0.5047°	S49°16'23"W	31.99'
C179	2165.00'	35.52'	0.5624°	S49°18'12"W	35.52'
C180	2165.00'	54.41'	1.2824°	S50°29'56"W	54.41'
C181	2165.00'	54.41'	1.2824°	S51°56'00"W	54.41'
C182	2165.00'	54.41'	1.2824°	S53°22'24"W	54.41'
C183	2165.00'	54.41'	1.2824°	S54°48'48"W	54.41'
C184	2165.00'	55.14'	1.2733°	S56°16'47"W	55.14'
C185	2065.00'	51.90'	1.2824°	S56°15'12"W	51.90'

## LEGEND

- SECTIONAL MONUMENT FOUND: TYPE, DATE, AGENCY AND LOCATION ETC. AS SHOWN ON THE PLAN
- SPECIES SURVEY CONTROL MONUMENT SET WITH ORIGINAL PLAT (CLASS 1, RING & LID SET TO CITY STANDARD)
- SPECIES FOUND SURVEY CONTROL MONUMENT AS SHOWN AND NOTED (CLASS 1, RING & LID)
- SPECIES SURVEY CONTROL MONUMENT TO BE SET (CLASS II, REBAR & ALUM. CAP SET TO CITY STANDARD)
- SPECIES FOUND SURVEY CONTROL MONUMENT (CLASS II, REBAR & ALUM. CAP SET TO CITY STANDARD)
- ALL BOUNDARY CORNERS TO BE SET WITH 5/8" REBAR AND ALUM. CAP STAMPED PLS 334569 UNLESS OTHERWISE SPECIFIED ON THE PLAN
- SPECIES FOUND BOUNDARY CORNERS SET WITH 5/8" REBAR AND CAP STAMPED PLS 334569
- SPECIES FOUND LOT PROPERTY CORNER RIGHT (2) OFFSET WHERE SIDEWALK IS PRESENT
- SPECIES EASEMENTS AS NOTED IN GENERAL NOTES: NOTE 1 - SEE SHEET 4
- SPECIES IRREGULAR COMMON AREA = 51,090 SQ.FT.
- SPECIES UN-IRREGULAR COMMON AREA = 489,838 SQ.FT.

### LINE TABLE

LINE NO.	DIRECTION	LENGTH
L3	N48°50'00"E	18.01'
L4	S48°50'00"W	11.01'
L5	S48°50'00"W	11.01'
L6	N48°50'00"E	18.01'
L7	N48°50'00"E	11.01'
L8	S48°50'00"W	11.01'
L9	N48°50'00"E	18.01'
L10	N48°50'00"E	11.01'
L11	S48°50'00"W	11.01'
L12	N48°50'00"E	18.01'
L13	N48°50'00"E	11.01'

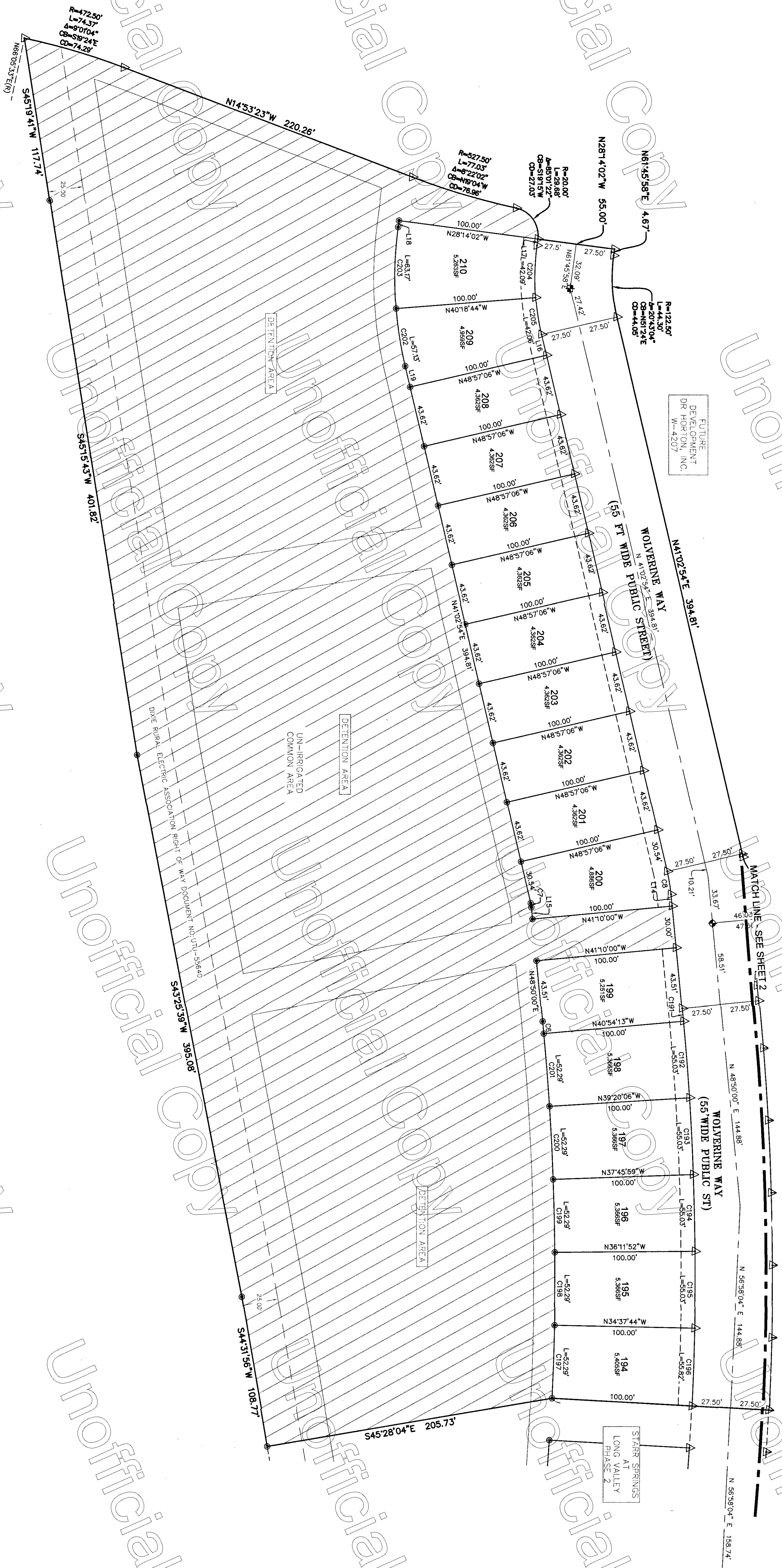


# STARR SPRINGS AT LONG VALLEY PHASE 3

LOCATED IN  
NW 1/4 OF SEC 29 & NE 1/4 SEC 30,  
TOWNSHIP 42 SOUTH, RANGE 14 WEST, SALT LAKE BASE AND MERIDIAN



FUTURE DEVELOPMENT  
DR. W. 4207, INC.  
W. 4207



### LEGEND

- ▲ SECTIONAL MONUMENTATION (FOUND, TYPE, DATE, AGENCY AND LOCATION ETC. AS SHOWN ON THE PLAN)
- SPECIES SURVEY CONTROL MONUMENT SET WITH ORIGINAL PLAT (CLASS 1, RING & LID SET TO CITY STANDARD)
- ⊕ SPECIES FOUND SURVEY CONTROL MONUMENT AS SHOWN AND NOTED (CLASS 1, RING & LID)
- ⊕ SPECIES SURVEY CONTROL MONUMENT TO BE SET (CLASS II, REBAR & ALUM. CAP SET TO CITY STANDARD)
- ⊕ SPECIES FOUND SURVEY CONTROL MONUMENT (CLASS II, REBAR & ALUM. CAP SET TO CITY STANDARD)
- ⊕ ALL BOUNDARY CORNERS TO BE SET WITH 5/8" REBAR AND CAP STAMPED PLS 334569 UNLESS OTHERWISE SPECIFIED ON THE PLAT
- ⊕ SPECIES FOUND BOUNDARY CORNERS SET WITH 5/8" REBAR AND CAP STAMPED PLS 334569
- ▲ SPECIES FOUND PROPERTY CORNER RIVER (2 OFFSET WHERE SIDEWALK IS PRESENT)
- SPECIES EASEMENTS AS NOTED IN GENERAL NOTES: NOTE 1 - SEE SHEET 4
- ▨ SPECIES IRRIGATED COMMON AREA = 51,090 SQ.FT.
- ▨ SPECIES UN-IRRIGATED COMMON AREA = 489,838 SQ.FT.

CURVE TABLE

CURVE NO.	RADIUS	LENGTH	DELTA	CHORD DIRECTION	CHORD LENGTH
C6	1910.00'	8.77'	0°15'47"	S48°57'53"W	8.77'
C7	22.50'	3.06'	7°47'06"	S44°56'27"W	3.06'
C8	122.50'	16.64'	7°47'06"	S44°56'27"W	16.63'

LINE TABLE

LINE NO.	DIRECTION	LENGTH
L14	S48°50'00"W	8.46'
L15	N48°50'00"E	8.46'
L16	S41°02'54"W	15.29'
L17	N61°45'58"E	4.67'
L18	N61°45'58"E	4.67'
L19	N41°02'54"E	15.29'

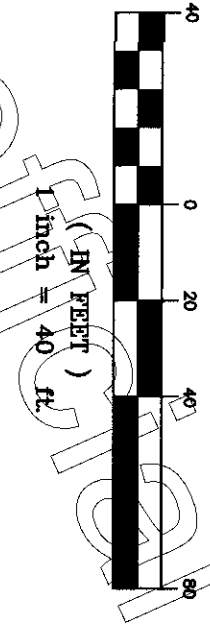
CURVE TABLE

CURVE NO.	RADIUS	LENGTH	DELTA	CHORD DIRECTION	CHORD LENGTH
C191	2010.00'	9.23'	0°15'47"	S48°57'53"W	9.23'
C192	2010.00'	55.03'	1°34'07"	S48°52'50"W	55.03'
C193	2010.00'	55.03'	1°34'07"	S51°28'58"W	55.03'
C194	2010.00'	55.03'	1°34'07"	S53°01'05"W	55.03'
C195	2010.00'	55.03'	1°34'07"	S54°35'12"W	55.03'
C196	2010.00'	55.82'	1°35'28"	S56°10'00"W	55.81'
C197	1910.00'	52.29'	1°34'07"	S56°09'19"W	52.29'
C198	1910.00'	52.29'	1°34'07"	S54°35'12"W	52.29'
C199	1910.00'	52.29'	1°34'07"	S53°01'05"W	52.29'
C200	1910.00'	52.29'	1°34'07"	S51°28'58"W	52.29'

CURVE TABLE

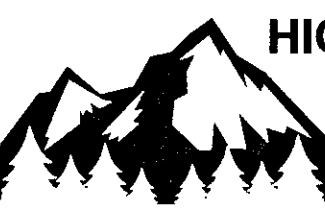
CURVE NO.	RADIUS	LENGTH	DELTA	CHORD DIRECTION	CHORD LENGTH
C201	1910.00'	52.29'	1°34'07"	S49°52'50"W	52.29'
C202	277.50'	41.84'	8°38'23"	N45°22'05"E	41.80'
C203	277.50'	58.50'	12°04'42"	N55°43'37"E	58.39'
C204	177.50'	37.42'	12°04'42"	N55°43'37"E	37.35'
C205	177.50'	26.77'	8°38'23"	N45°22'05"E	26.74'

GRAPHIC SCALE



**STARR SPRINGS AT LONG VALLEY PHASE 3**  
LOCATED IN  
NW 1/4 OF SEC 29 & NE 1/4 SEC 30,  
TOWNSHIP 42 SOUTH, RANGE 14 WEST, SALT LAKE BASE AND MERIDIAN

Drawn: MDR Date: SEPT 2022  
Email: MDR  
Checked: JAR  
Approved: JAR  
Scale: 1" = 40'  
Job No: 211003



**HIGH POINT ENGINEERING & SURVEYING**  
ENGINEERING - PLANNING - SURVEYING  
1360 WEST 2130 SOUTH  
ST. GEORGE UT 84770  
OFFICE: (435) 668-5293 - SURVEY SCHEDULE (435) 256-2109

No	Date	By	Revision

SHEET  
3  
4  
SHEETS  
FILE: 211003\F3

