

C:\Users\kenn\OneDrive\Documents\local\temp\kcp\dshsh_17601\23322C\affidavit_exhibit.dwg May 20, 2016 - 2:38pm

MCNEIL ENGINEERING - CIVIL, L.C.

MCNEIL ENGINEERING STRUCTURAL, L.C.

MCNEIL ENGINEERING - ST. GEORGE, L.C.

MCNEIL ENGINEERING STRUCTURAL, L.C.

MCNEIL ENGINEERING - CIVIL, L.C.

MCNEIL ENGINEERING - SURVEYING, L.C.

PROJECT NO:	12332C
CHECKED BY:	MDH
DRAWN BY:	DNV
DATE:	2/23/15

**THE VIEWS AT EAGLEWOOD
VILLAGE P.U.D. PHASE 1
EAGLEWOOD DR. & PARKVIEW DR.
AFFIDAVIT EXHIBIT**

**McNEIL
ENGINEERING**

Designing for the Future Since 1983™

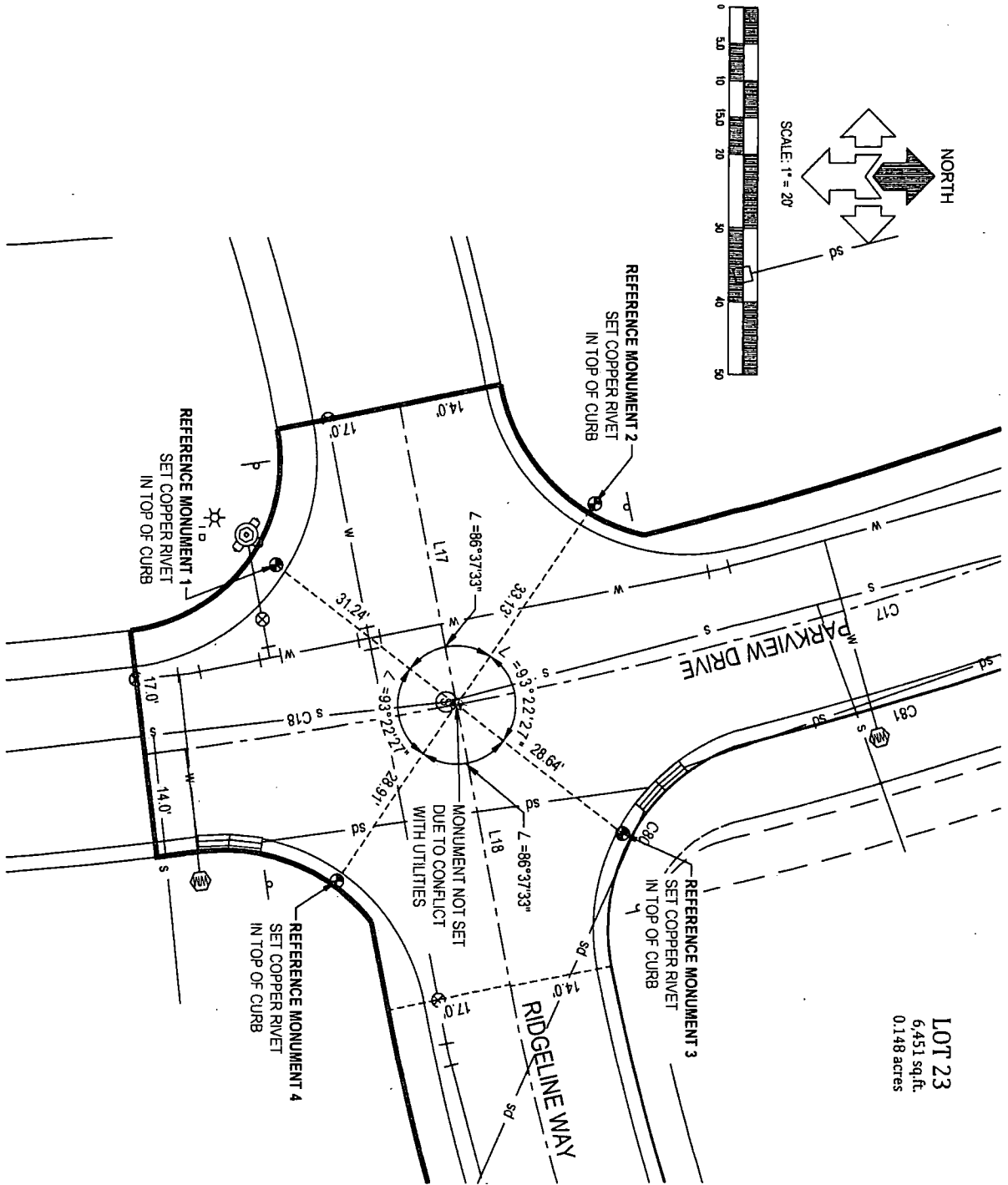
8610 So. Sandy Parkway, Suite 200 Sandy, Utah 84070
TEL. (801) 255-7700 FAX (801) 255-8071
E-MAIL info@mcneileng.com WEB SITE AT www.mcneil-group.com

C:\Users\Kenl\OneDrive\Documents\Local\temp\McNeil\17160\12332C\affidavit\embedding May 20, 2016 - 2:38pm

MCNEIL ENGINEERING STRUCTURAL, L.C.

MCNEIL ENGINEERING - CIVIL, L.C.

MCNEIL ENGINEERING - SURVEYING, L.C.



LOT 23
6,451 sq. ft.
0.148 acres

MONUMENT NOT SET
DUE TO CONFLICT
WITH UTILITIES

**THE VIEWS AT EAGLEWOOD
VILLAGE P.U.D. PHASE 1**
PARKVIEW DR. RIDGELINE WAY
AFFIDAVIT EXHIBIT



**McNEIL
ENGINEERING**
Designing for the Future Since 1983™

8610 So. Sandy Parkway, Suite 200 Sandy, Utah 84070
TEL. (801) 255-7700 FAX (801) 255-8071
E-MAIL info@mcneileng.com WEB SITE AT www.mcneil-group.com

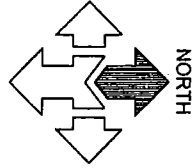
PROJECT NO.:	12332C
CHECKED BY:	MDH
DRAWN BY:	DNW
DATE:	5/20/16
5 OF 6	

C:\Users\ken\OneDrive\Work\Projects\2016\1760\12332SP\affidavit\exhibiting May 20, 2016 - 2:39pm

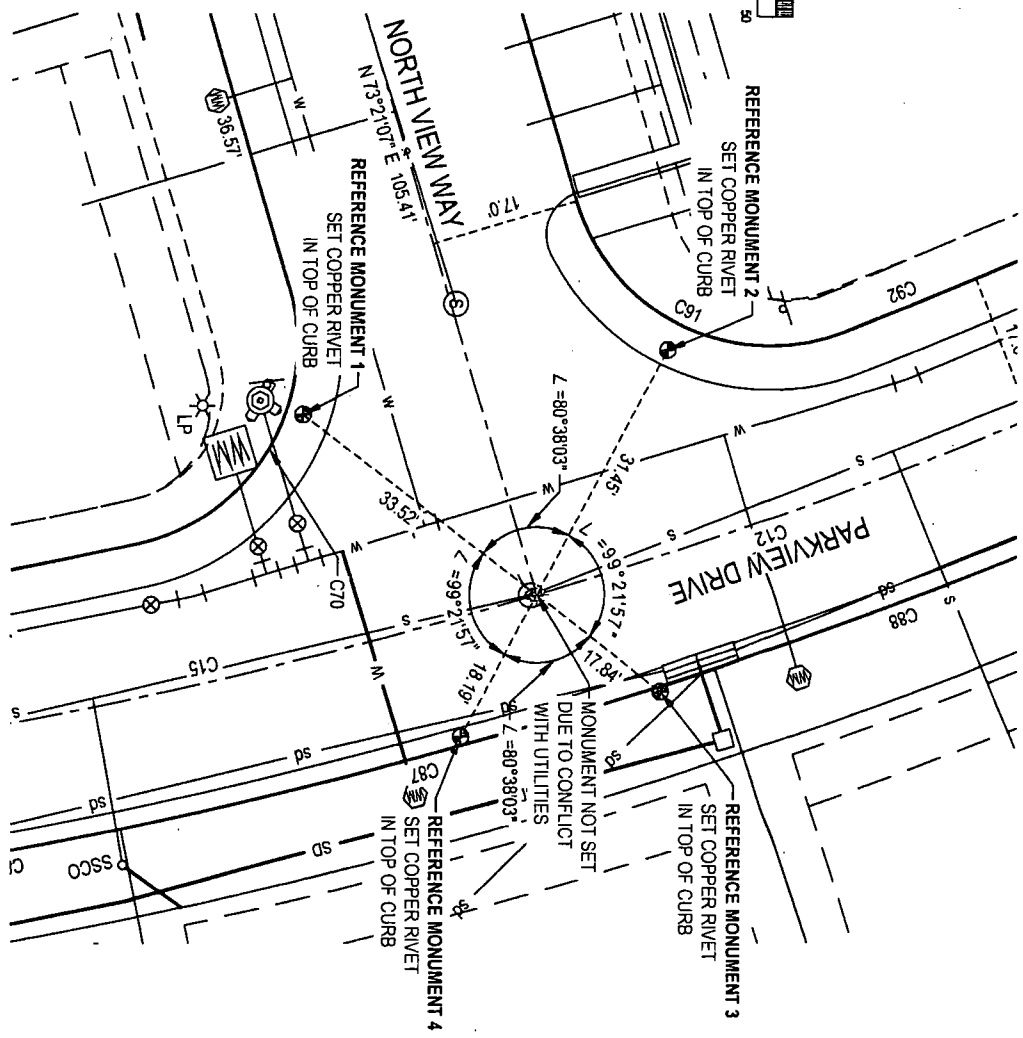
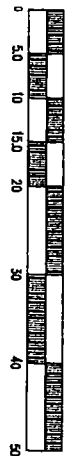
MCNEIL ENGINEERING STRUCTURAL, L.C.

MCNEIL ENGINEERING - CIVIL, L.C.

MCNEIL ENGINEERING - SURVEYING, L.C.



SCALE: 1" = 20'



MCNEIL ENGINEERING STRUCTURAL, L.C.

MCNEIL ENGINEERING - ST. GEORGE, L.C.

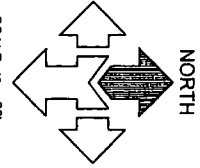
**THE VIEWS AT EAGLEWOOD
VILLAGE P.U.D. PHASE 1**
PARKVIEW DR. & NOTHVIEW WAY
AFFIDAVIT EXHIBIT



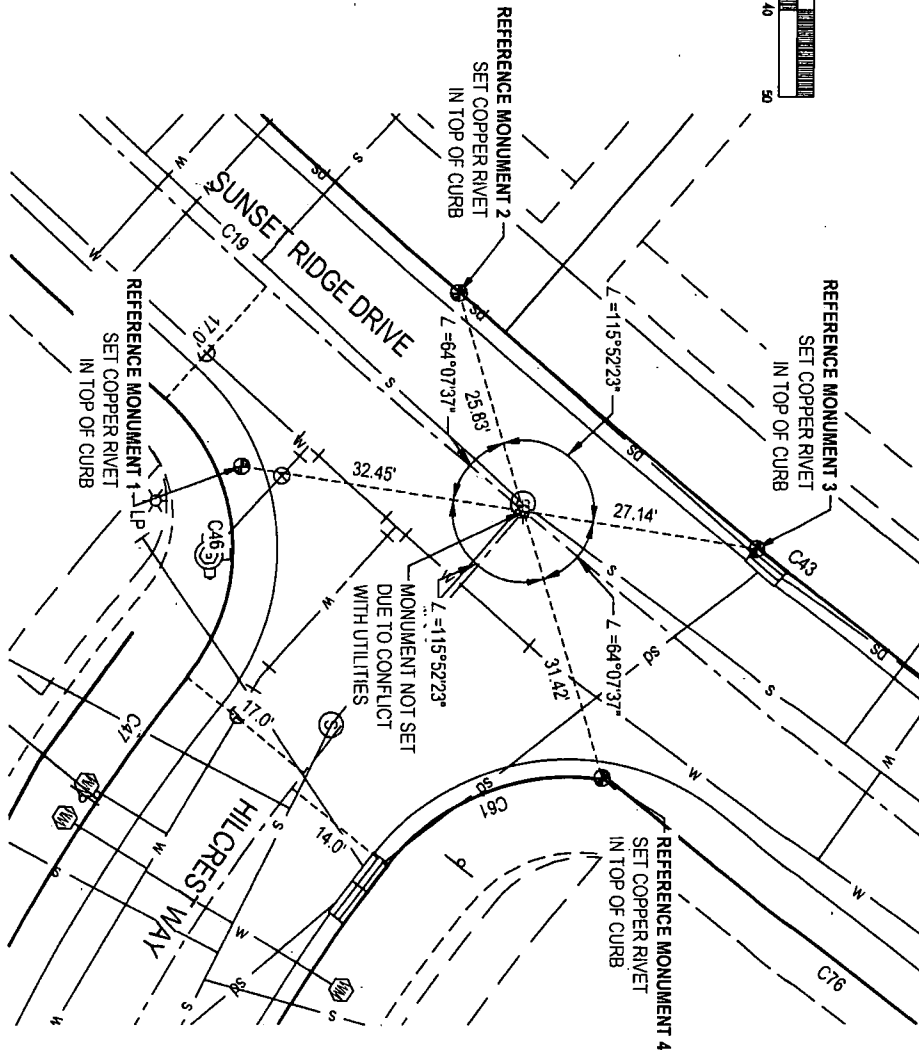
**McNEIL
ENGINEERING**
Designing for the Future Since 1983™

8610 So. Sandy Parkway, Suite 200 Sandy, Utah 84070
TEL. (801) 255-7700 FAX (801) 255-8071
E-MAIL info@mccneileng.com WEB SITE AT www.mccneil-group.com

PROJECT NO.:	12332.C
CHECKED BY:	MDH
DRAWN BY:	DKW
DATE:	5/20/16
2 OF 6	



SCALE: 1" = 20'



C:\Users\kvent\OneDrive\Group\update\local\temp\AcP\drafts\1760\123325P affidavit exhibit.dwg May 20, 2016 - 2:36pm

MCNEIL ENGINEERING - CIVIL, L.C.

MCNEIL ENGINEERING STRUCTURAL, L.C.

MCNEIL ENGINEERING - ST. GEORGE, L.C.

MCNEIL ENGINEERING STRUCTURAL, L.C.

MCNEIL ENGINEERING - CIVIL, L.C.

MCNEIL ENGINEERING - SURVEYING, L.C.

PROJECT NO:	12332C
CHECKED BY:	MDH
DRAWN BY:	DRW
DATE:	5/20/16

**THE VIEWS AT EAGLEWOOD
VILLAGE P.U.D. PHASE 1
SUNSET RIDGE DRIVE & HILCREST WAY
AFFIDAVIT EXHIBIT**

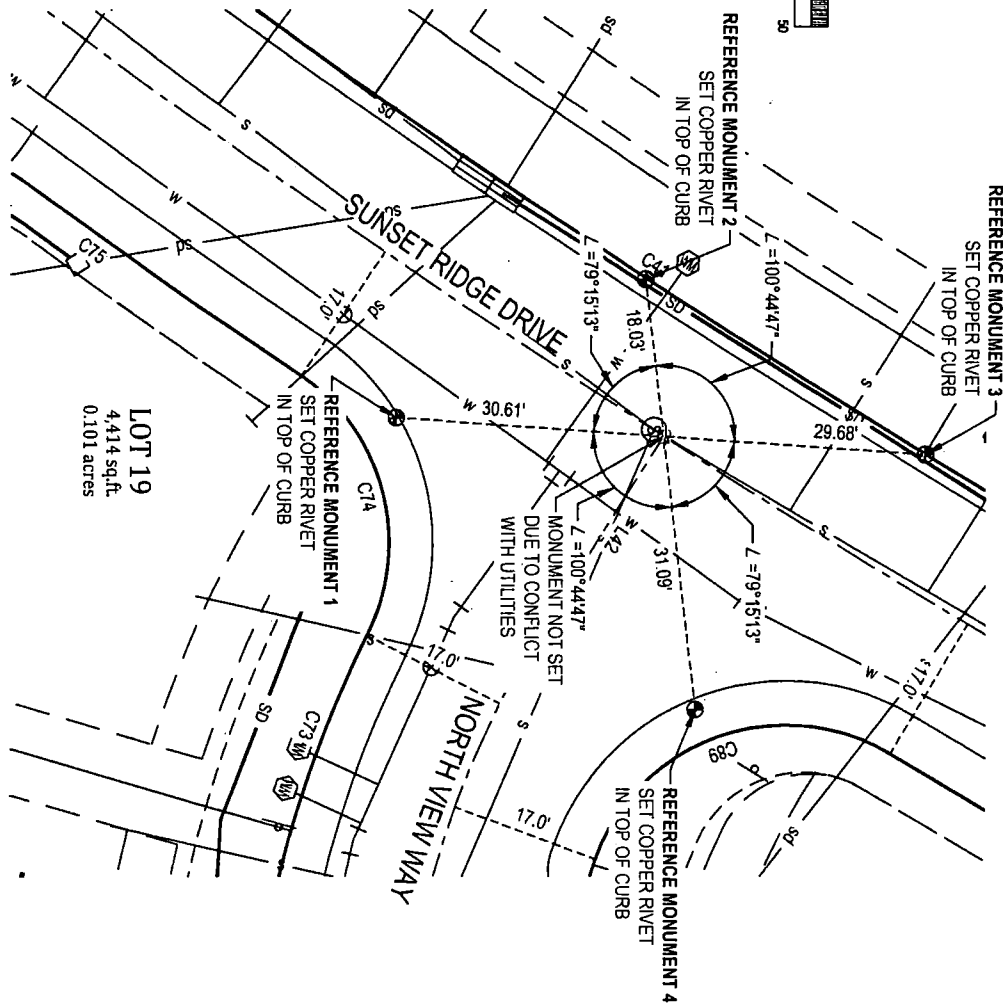
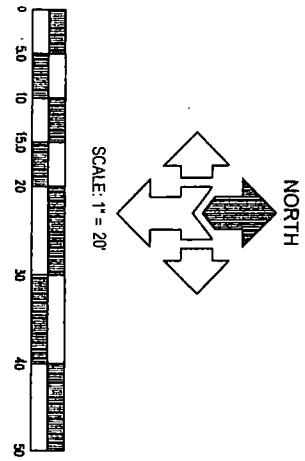


**McNEIL
ENGINEERING**
Designing for the Future Since 1983

8610 So. Sandy Parkway, Suite 200 Sandy, Utah 84070
TEL. (801) 255-7700 FAX (801) 255-8071
E-MAIL info@mcneileng.com WEB SITE AT www.mcneil-group.com

C:\Users\kvent\OneDrive\OneDrive\local\temp\AcProject\1780\1233232P\affidavit\exhibit.dwg May 20, 2016 - 2:36pm

MCNEIL ENGINEERING STRUCTURAL, L.C. MCNEIL ENGINEERING - CIVIL, L.C. MCNEIL ENGINEERING - SURVEYING, L.C.



LOT 19
4,414 sq.ft.
0.101 acres

PROJECT NO:	12332C
CHECKED BY:	MDH
DRAWN BY:	DRW
DATE:	5/20/16

**THE VIEWS AT EAGLEWOOD
VILLAGE P.U.D. PHASE 1
SUNSET RIDGE DR. & NORTHVIEW WAY
AFFIDAVIT EXHIBIT**

McNEIL ENGINEERING
Designing for the Future Since 1983™
8610 So. Sandy Parkway, Suite 200 Sandy, Utah 84070
TEL. (801) 255-7700 FAX (801) 255-8071
E-MAIL info@mcneileng.com WEB SITE AT www.mcneil-group.com