

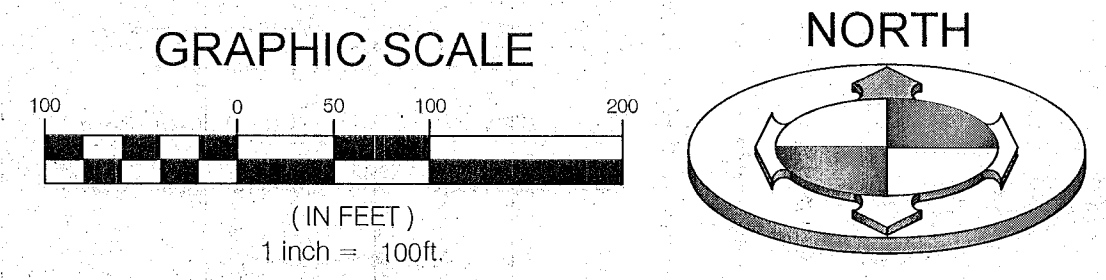
LS-60

**LEGEND**

|   |                   |
|---|-------------------|
| ◆ WEBER COUNTY SECTION CORNER             | SECTION LINE      |
| ○ LOT CORNER (SET 3/4 REBAR AND CAP)      | BOUNDARY LINE     |
| ○ BOUNDARY CORNER (SET 3/4 REBAR AND CAP) | LOT LINE          |
| P.U.E. PUBLIC UTILITY EASEMENT            | STREET CENTERLINE |
| ◆ STREET MON. (TO BE CONST.)              | EASEMENT LINE     |
|   | RIGHT OF WAY LINE |

# WINSTON PARK SUBDIVISION

LOCATED IN THE NORTHEAST QUARTER OF SECTION 28,  
TOWNSHIP 6 NORTH NORTH, RANGE 2 WEST,  
SALT LAKE BASE AND MERIDIAN  
WEBER COUNTY, UTAH  
JUNE, 2022



**SURVEYOR'S CERTIFICATE**

I, BRIAN A. LINAM DO HEREBY CERTIFY THAT I AM A LICENSED PROFESSIONAL LAND SURVEYOR, IN THE STATE OF UTAH IN ACCORDANCE WITH TITLE 58, CHAPTER 22, PROFESSIONAL ENGINEERS AND LAND SURVEYORS ACT, AND THAT I HOLD CERTIFICATE NO. 7240531; AND THAT I HAVE COMPLETED A SURVEY OF THE PROPERTY DESCRIBED ON THIS PLAT IN ACCORDANCE WITH SECTION 17-23-17 AND HAVE VERIFIED ALL MEASUREMENTS, AND HAVE PLACED MONUMENTS AS REPRESENTED ON THIS PLAT, AND THAT THIS PLAT OF WINSTON PARK SUBDIVISION IN WEBER COUNTY, UTAH, HAS BEEN DRAWN CORRECTLY TO THE DESIGNATED SCALE AND IS A TRUE AND CORRECT REPRESENTATION OF THE HEREIN DESCRIBED LANDS INCLUDED IN SAID SUBDIVISION, BASED UPON DATA COMPILED FROM RECORDS IN THE WEBER COUNTY RECORDERS OFFICE AND FROM SAID SURVEY MADE BY ME ON THE GROUND. I FURTHER CERTIFY THAT THE REQUIREMENTS OF ALL APPLICABLE STATUTES AND ORDINANCES OF WEBER COUNTY CONCERNING ZONING REQUIREMENTS REGARDING LOT MEASUREMENTS HAVE BEEN COMPILED WITH.



**WINSTON PARK SUBDIVISION**

**BOUNDARY DESCRIPTION**

A TRACT OF LAND LOCATED IN THE NORTHEAST QUARTER OF SECTION 28, TOWNSHIP 6 NORTH, RANGE 2 WEST, SALT LAKE BASE AND MERIDIAN. SAID TRACT OF LAND MORE PARTICULARLY DESCRIBED AS FOLLOWS:  
BEGINNING AT A POINT ON THE EXISTING FENCE LINE EXTENDED DEFINED AS THE WESTERLY BANK OF A SLOUGH, SAID POINT BEING NORTH 89°15'08" WEST ALONG THE QUARTER SECTION LINE 152.35 FEET FROM THE NORTHEAST CORNER OF SECTION 28, TOWNSHIP 6 NORTH, RANGE 2 WEST, SALT LAKE BASE AND MERIDIAN AND RUNNING THENCE BEGINNING AT A POINT ON THE EXISTING FENCE LINE EXTENDED DEFINED AS THE WESTERLY BANK OF A SLOUGH, SAID POINT BEING NORTH 89°15'08" WEST ALONG THE QUARTER SECTION LINE 152.35 FEET FROM THE NORTHEAST CORNER OF SECTION 28, TOWNSHIP 6 NORTH, RANGE 2 WEST, SALT LAKE BASE AND MERIDIAN AND RUNNING THENCE ALONG SAID EXISTING FENCE AND WESTERLY BANK OF SAID SLOUGH THE FOLLOWING SEVEN (7) COURSES: 1) SOUTH 38°20'27" WEST 414.75 FEET; 2) SOUTH 37°51'05" WEST 188.07 FEET; 3) SOUTH 38°06'04" WEST 513.12 FEET; 4) SOUTH 43°27'51" WEST 42.80 FEET; 5) SOUTH 39°10'43" WEST 191.74 FEET; 6) SOUTH 41°15'28" WEST 152.02 FEET; 7) SOUTH 33°50'24" WEST 167.55 FEET TO POINT ON A BOUNDARY LINE AGREEMENT RECORDED AS ENTRY NO. 3184075 AT THE OFFICE OF THE WEBER COUNTY RECORDER; THENCE NORTH 88°46'49" WEST 814.57 FEET ALONG SAID BOUNDARY LINE AGREEMENT; THENCE NORTH 00°41'23" EAST 1313.75 FEET TO THE QUARTER SECTION LINE; THENCE SOUTH 89°15'08" EAST ALONG SAID QUARTER SECTION LINE 1830.36 FEET TO THE POINT OF BEGINNING.

CONTAINS 40.152 ACRES, MORE OR LESS  
54 RESIDENTIAL LOTS & 2 COMMON AREAS & 1 PARCEL

**OWNER'S DEDICATION**

WE THE UNDERSIGNED OWNERS OF THE HEREIN DESCRIBED TRACT OF LAND, DO HEREBY SET APART AND SUBDIVIDE THE SAME INTO LOTS AND STREETS AS SHOWN ON THE PLAT AND NAME SAID TRACT, WINSTON PARK SUBDIVISION, AND DO HEREBY DEDICATE, FOR PERPETUAL USE OF THE PUBLIC ALL PARCELS OF LAND, TRAILS AND ROADS INTENDED FOR PUBLIC USE AND ALSO TO GRANT AND DEDICATE A PERPETUAL RIGHT AND EASEMENT OVER, UPON AND UNDER THE LANDS DESIGNATED HEREON AS PUBLIC UTILITY EASEMENTS, STORM WATER DETENTION PONDS, SEWER EASEMENTS, AND DRAINAGE EASEMENTS, THE SAME TO BE USED FOR THE INSTALLATION, MAINTENANCE, AND OPERATION OF PUBLIC UTILITY SERVICES LINE, AND STORM DRAINAGE FACILITIES, WITH NO BUILDINGS OR STRUCTURES BEING ERRECTED WITHIN SUCH EASEMENTS.

AND DO ALSO GRANT AND CONVEY TO THE SUBDIVISION LOT OWNERS ASSOCIATION, ALL THOSE PARTS OR PORTIONS OF SAID TRACT OF LAND DESIGNATED AS COMMON AREAS TO BE USED FOR RECREATIONAL AND PURPOSES FOR THE BENEFIT OF EACH LOT OWNERS ASSOCIATION MEMBER IN COMMON WITH ALL OTHERS IN THE SUBDIVISION AND GRANT AND DEDICATE TO THE COUNTY A PERPETUAL RIGHT AND EASEMENT ON AND OVER THE COMMON AREAS TO GUARANTEE TO WEBER COUNTY THAT THE COMMON AREAS REMAIN OPEN AND UNDEVELOPED EXCEPT FOR APPROVED RECREATIONAL, PARKING AND OPEN SPACE PURPOSES.

SIGNED THIS 6 DAY OF July, 2022

**WINSTON PARK SUBDIVISION**

Wade Rumsey, Wade Rumsey, op  
Wade Rumsey, MEMBER MANAGER FOR OGDEN 3, LLC

**ACKNOWLEDGMENT**

State of } S.S.  
County of }  
ON THE 6 DAY OF July, 2022, Wade Rumsey, op, PERSONALLY APPEARED BEFORE ME, THE UNDERSIGNED NOTARY PUBLIC, WADE RUMSEY, OF THE ABOVE OWNERS DEDICATION AND CERTIFICATION, WHO BEING BY ME DULY SWORN, DID ACKNOWLEDGE TO ME THAT HE SIGNED IT FREELY, VOLUNTARILY, AND FOR THE PURPOSES THEREIN MENTIONED.

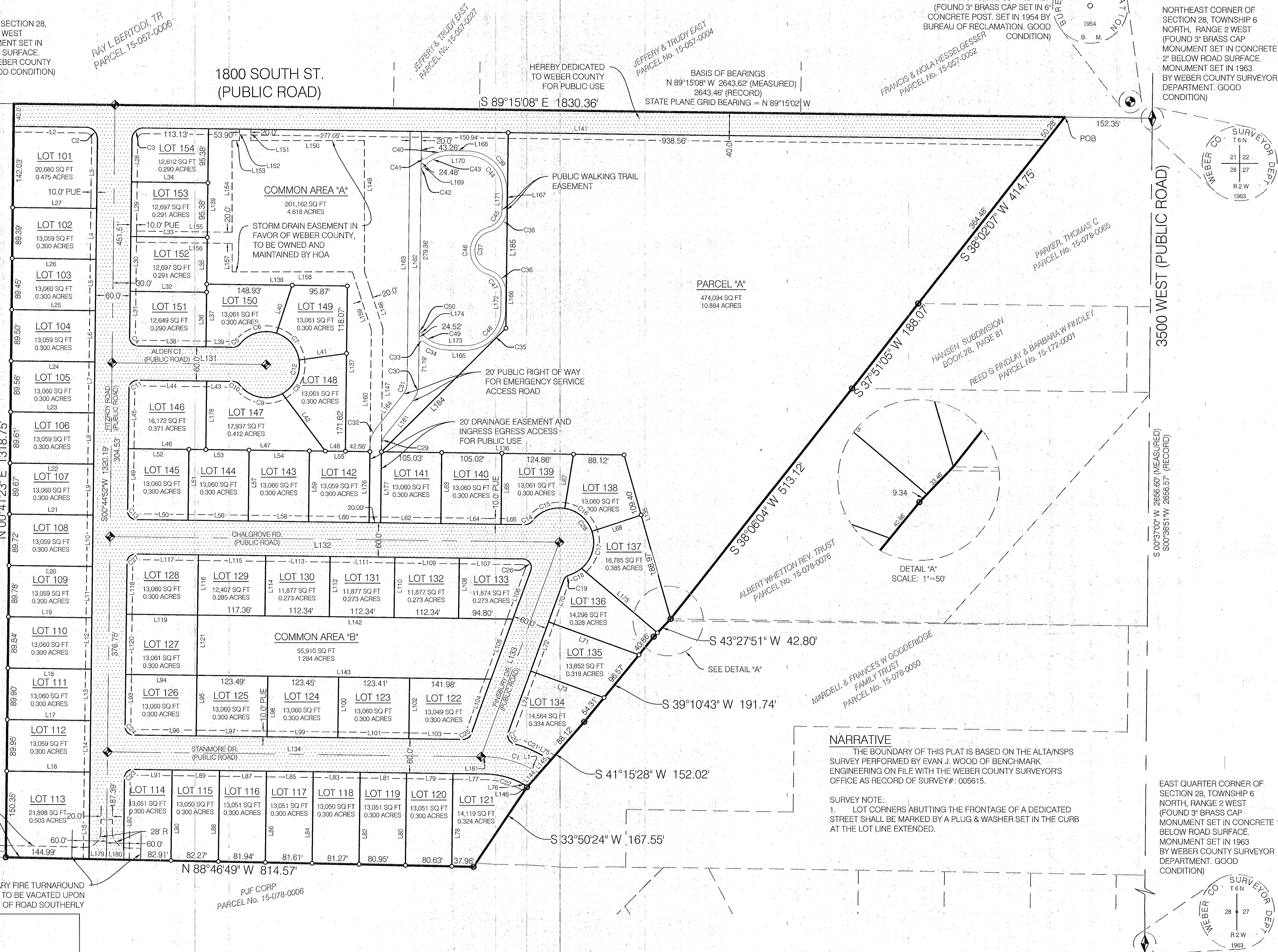
MY COMMISSION NUMBER: 705242 Ann J. Macley, NOTARY PUBLIC (PRINT NAME)

MY COMMISSION EXPIRES: 3-18-2025 Ann J. Macley, NOTARY PUBLIC, RESIDING IN WEBER COUNTY

**WINSTON PARK SUBDIVISION**

LOCATED IN THE NORTHEAST QUARTER OF SECTION 28,  
TOWNSHIP 6 NORTH NORTH, RANGE 2 WEST,  
SALT LAKE BASE AND MERIDIAN  
WEBER COUNTY, UTAH  
JUNE, 2022

**NOTES:**  
1. FOR LOT ADDRESSES SEE PAGE 2  
2. AGRICULTURE IS THE PREFERRED USE IN THE AGRICULTURAL ZONES. AGRICULTURAL OPERATIONS AS SPECIFIED IN THE LAND USE CODE FOR A PARTICULAR ZONE ARE PERMITTED AT ANYTIME INCLUDING THE OPERATION OF FARM MACHINERY AND NOT AGRICULTURAL USE SHALL BE SUBJECT TO RESTRICTIONS ON THE BASIS THAT IT INTERFERES WITH ACTIVITIES OF FUTURE RESIDENTS OF THIS SUBDIVISION. WCO 106-1-8 (C)(5)  
3. THE LOWEST ALLOWABLE LIVABLE FINISH FLOOR ELEVATION WILL NEED TO BE APPROVED BY GEOTECHNICAL ENGINEER AND COUNTY ENGINEER DUE TO GROUND WATER TABLE.  
4. SETBACKS FOR THIS SUBDIVISION MAY VARY FROM THE A-1 ZONE. FRONT/REAR: 20 FT, SIDE: 6 FT, STREET-FACING SIDE (CORNER LOT): 15 FT.



**NARRATIVE**  
THE BOUNDARY OF THIS PLAT IS BASED ON THE ALTA/NSPS SURVEY PERFORMED BY EVAN J. WOOD OF BENCH-MARK ENGINEERING ON FILE WITH THE WEBER COUNTY SURVEYORS OFFICE AS RECORD OF SURVEY#: 005615.

**SURVEY NOTE:**  
1. LOT CORNERS ABUTTING THE FRONTAGE OF A DEDICATED STREET SHALL BE MARKED BY A PLUG & WASHER SET IN THE CURB AT THE LOT LINE EXTENDED.

EAST QUARTER CORNER OF SECTION 28, TOWNSHIP 6 NORTH, RANGE 2 WEST (FOUND 3" BRASS CAP MONUMENT SET IN CONCRETE 1' BELOW ROAD SURFACE. MONUMENT SET IN 1963 BY WEBER COUNTY SURVEYOR DEPARTMENT. GOOD CONDITION)

**OWNER / DEVELOPER:**  
NAME: OGDEN 3, LLC  
TELEPHONE: (801) 209-6759  
IGORMAKSYMIV@AOL.COM

**TAYLOR WEST WEBER WATER IMPROVEMENT DISTRICT**  
THIS IS TO CERTIFY THAT THIS SUBDIVISION PLAT AND WATER DESIGN IS APPROVED BY TAYLOR WEST WEBER WATER IMPROVEMENT DISTRICT ON THE 30th DAY OF June, 2022.

**WEBER COUNTY SURVEYOR**  
I HEREBY CERTIFY THAT THE WEBER COUNTY SURVEYORS OFFICE HAS REVIEWED THIS PLAT AND ALL CONDITIONS FOR APPROVAL BY THIS OFFICE HAVE BEEN SATISFIED. THE APPROVAL OF THIS PLAT BY THE WEBER COUNTY SURVEYOR DOES NOT RELIEVE THE LICENSED LAND SURVEYOR WHO EXECUTED THIS PLAT FROM THE RESPONSIBILITIES AND/OR LIABILITIES ASSOCIATED THEREWITH.  
SIGNED THIS 28th DAY OF June, 2022.  
WEBER COUNTY SURVEYOR  
RECORD OF SURVEY # 705242

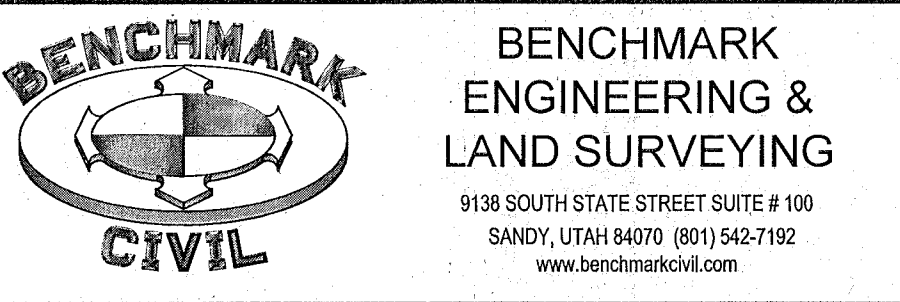
**WEBER COUNTY PLANNING COMMISSION ACCEPTANCE**  
THIS IS TO CERTIFY THAT THIS SUBDIVISION PLAT WAS DULY APPROVED BY THE WEBER COUNTY PLANNING COMMISSION ON THE 12 DAY OF July, 2022.

**WEBER COUNTY ENGINEER**  
I HEREBY CERTIFY THAT THE REQUIRED PUBLIC IMPROVEMENT STANDARDS AND DRAWINGS FOR THIS SUBDIVISION CONFORM WITH THE COUNTY STANDARDS AND THE AMOUNT OF THE FINANCIAL GUARANTEE IS SUFFICIENT FOR THE INSTALLATION OF THESE IMPROVEMENTS.  
SIGNED THIS 11th DAY OF July, 2022

**WEBER COUNTY COMMISSION ACCEPTANCE**  
THIS IS TO CERTIFY THAT THIS SUBDIVISION PLAT, THE DEDICATION OF STREETS AND OTHER OTHER PUBLIC WAYS AND FINANCIAL GUARANTEE OF PUBLIC IMPROVEMENTS ASSOCIATED WITH THIS SUBDIVISION, THEREON ARE HEREBY APPROVED AND ACCEPTED BY THE COMMISSIONERS OF WEBER COUNTY, UTAH THIS 12 DAY OF July, 2022

**WEBER COUNTY ATTORNEY**  
I HAVE EXAMINED THE FINANCIAL GUARANTEE AND OTHER DOCUMENTS ASSOCIATED WITH THIS SUBDIVISION PLAT AND IN MY OPINION THEY CONFORM WITH THE COUNTY ORDINANCE APPLICABLE THERETO AND NOW IN FORCE AND AFFECT.  
SIGNED THIS 08 DAY OF July, 2022

**WEBER COUNTY RECORDER**  
ENTRY NO. 3245491  
FILED FOR RECORD AND RECORDED 12-01-2022 AT 2:50  
BOOK 93 OF OFFICIAL RECORDS, PAGE 87  
RECORDED FOR: OGDEN 3, LLC  
LEANN H. KELLS  
WEBER COUNTY RECORDER  
DEPUTY



Signature of Taylor West Weber  
REPRESENTATIVE (TWWIID)

Signature of Weber County Surveyor

Signature of Weber County Planning Commission Chairman

Signature of Weber County Engineer

Signature of Weber County Commission Chairman

Signature of Weber County Attorney

Signature of Weber County Recorder Deputy

35-86

# WINSTON PARK SUBDIVISION

LOCATED IN THE NORTHEAST QUARTER OF SECTION 28,  
TOWNSHIP 6 NORTH NORTH, RANGE 2 WEST,  
SALT LAKE BASE AND MERIDIAN  
WEBER COUNTY, UTAH  
JUNE 2022

| CURVE TABLE |        |        |            |               |                |
|-------------|--------|--------|------------|---------------|----------------|
| CURVE #     | LENGTH | RADIUS | DELTA      | CHORD BEARING | CHORD DISTANCE |
| C1          | 77.39  | 170.00 | 26°04'54"  | N 76°11'45" W | 76.72          |
| C2          | 31.42  | 20.00  | 90°00'00"  | N 44°15'08" W | 28.28          |
| C3          | 31.42  | 20.00  | 90°00'00"  | S 45°44'52" W | 28.28          |
| C4          | 23.56  | 15.00  | 90°00'00"  | S 44°15'08" E | 21.21          |
| C5          | 13.60  | 15.00  | 51°56'37"  | N 64°46'33" E | 13.14          |
| C6          | 70.24  | 58.00  | 69°23'17"  | S 73°29'54" W | 66.03          |
| C7          | 64.62  | 58.00  | 63°50'01"  | N 39°53'27" W | 61.33          |
| C8          | 69.97  | 58.00  | 69°07'21"  | N 26°35'14" E | 65.81          |
| C9          | 82.55  | 58.00  | 81°32'34"  | S 78°04'49" E | 75.75          |
| C10         | 13.60  | 15.00  | 51°56'37"  | N 63°16'50" W | 13.14          |
| C11         | 23.56  | 15.00  | 90°00'00"  | S 45°44'52" W | 21.21          |
| C12         | 287.38 | 58.00  | 283°53'13" | N 00°44'52" E | 71.51          |
| C13         | 23.56  | 15.00  | 90°00'00"  | S 44°15'08" E | 21.21          |
| C14         | 13.91  | 15.00  | 53°07'48"  | N 64°10'57" E | 13.42          |
| C15         | 64.50  | 60.00  | 61°35'49"  | S 68°24'58" W | 61.44          |
| C16         | 65.29  | 60.00  | 62°21'06"  | N 49°36'35" W | 62.12          |
| C17         | 71.33  | 60.00  | 68°07'00"  | N 15°37'28" E | 67.20          |
| C18         | 24.58  | 60.00  | 23°28'25"  | N 61°25'11" E | 24.41          |
| C19         | 13.91  | 15.00  | 53°07'48"  | S 46°35'29" W | 13.42          |
| C20         | 24.81  | 15.00  | 94°46'35"  | S 27°21'43" E | 22.08          |
| C21         | 40.47  | 200.00 | 11°35'42"  | N 68°57'09" W | 40.41          |
| C22         | 63.73  | 140.00 | 26°04'54"  | N 76°11'45" W | 63.18          |
| C23         | 23.57  | 15.00  | 90°00'57"  | S 45°45'20" W | 21.22          |
| C24         | 23.56  | 15.00  | 89°59'03"  | S 44°14'40" E | 21.21          |
| C25         | 18.52  | 15.00  | 70°44'14"  | N 55°23'42" E | 17.37          |
| C26         | 28.61  | 15.00  | 109°16'43" | N 34°36'47" W | 24.47          |
| C27         | 23.56  | 15.00  | 90°00'00"  | S 45°44'52" W | 21.21          |
| C28         | 225.71 | 60.00  | 215°32'20" | N 34°36'47" W | 114.28         |
| C29         | 18.43  | 28.00  | 37°42'19"  | S 19°36'01" E | 18.10          |
| C30         | 31.59  | 48.00  | 37°42'19"  | N 19°36'01" E | 31.02          |
| C31         | 18.43  | 28.00  | 37°42'19"  | N 19°36'01" E | 18.10          |
| C32         | 31.59  | 48.00  | 37°42'19"  | S 19°36'01" W | 31.02          |
| C33         | 11.11  | 5.00   | 127°17'04" | S 64°23'23" W | 8.96           |
| C34         | 45.55  | 70.00  | 37°17'02"  | S 70°36'37" E | 44.75          |
| C35         | 109.96 | 70.00  | 90°00'00"  | N 45°44'52" E | 98.99          |
| C36         | 52.00  | 40.00  | 74°28'45"  | N 36°29'31" W | 48.41          |
| C37         | 90.32  | 34.74  | 148°57'29" | S 00°44'52" W | 66.95          |
| C38         | 52.00  | 40.00  | 74°28'45"  | N 37°59'14" E | 48.41          |
| C39         | 109.96 | 70.00  | 90°00'00"  | N 44°15'08" W | 98.99          |
| C40         | 45.48  | 70.00  | 37°13'40"  | S 72°08'02" W | 44.69          |
| C41         | 11.10  | 5.00   | 127°13'40" | S 62°51'58" E | 8.96           |
| C42         | 3.93   | 5.00   | 45°00'03"  | S 23°14'50" W | 3.83           |
| C43         | 48.69  | 62.00  | 45°00'00"  | S 68°14'52" W | 47.45          |
| C44         | 97.39  | 62.00  | 90°00'00"  | N 44°15'08" W | 87.68          |
| C45         | 41.60  | 32.00  | 74°28'45"  | N 37°59'14" E | 38.73          |
| C46         | 111.12 | 42.74  | 148°57'29" | S 00°44'52" W | 82.37          |
| C47         | 41.60  | 32.00  | 74°28'45"  | N 36°29'31" W | 38.73          |
| C48         | 97.39  | 62.00  | 90°00'00"  | N 45°44'52" E | 87.68          |
| C49         | 48.82  | 62.00  | 45°06'54"  | S 66°41'41" E | 47.57          |
| C50         | 3.92   | 5.00   | 44°53'06"  | S 21°41'41" E | 3.82           |

| PARCEL LINE TABLE |               |          |
|-------------------|---------------|----------|
| LINE #            | BEARING       | DISTANCE |
| L1                | S 63°09'18" E | 22.14    |
| L2                | S 89°15'08" E | 126.28   |
| L3                | S 00°44'52" W | 122.02   |
| L4                | S 00°44'52" W | 89.39    |
| L5                | S 00°44'52" W | 89.45    |
| L6                | S 00°44'52" W | 89.50    |
| L7                | S 00°44'52" W | 89.56    |
| L8                | S 00°44'52" W | 89.61    |
| L9                | S 00°44'52" W | 89.67    |
| L10               | S 00°44'52" W | 89.72    |
| L11               | S 00°44'52" W | 89.78    |
| L12               | S 00°44'52" W | 89.84    |
| L13               | S 00°44'52" W | 89.90    |
| L14               | S 00°44'52" W | 89.95    |
| L15               | S 00°44'52" W | 151.55   |
| L16               | N 89°15'08" W | 145.14   |
| L17               | S 89°15'08" E | 145.23   |
| L18               | N 89°15'08" W | 145.32   |
| L19               | S 89°15'08" E | 145.41   |
| L20               | N 89°15'08" W | 145.50   |
| L21               | S 89°15'08" E | 145.60   |
| L22               | N 89°15'08" W | 145.69   |
| L23               | S 89°15'08" E | 145.78   |
| L24               | N 89°15'08" W | 145.87   |
| L25               | S 89°15'08" E | 145.96   |
| L26               | N 89°15'08" W | 146.05   |
| L27               | S 89°15'08" E | 146.14   |
| L28               | S 00°44'52" W | 75.38    |
| L29               | S 00°44'52" W | 95.38    |
| L30               | S 00°44'52" W | 95.38    |
| L31               | S 00°44'52" W | 80.38    |
| L32               | S 89°15'08" E | 133.13   |
| L33               | S 89°15'08" E | 133.13   |
| L34               | S 89°15'08" E | 133.13   |
| L35               | S 00°44'52" W | 95.38    |
| L36               | S 00°44'52" W | 95.38    |
| L37               | S 00°44'52" W | 109.50   |
| L38               | S 89°15'08" E | 118.13   |
| L39               | S 89°15'08" E | 47.61    |
| L40               | N 18°11'32" E | 88.23    |

| PARCEL LINE TABLE |               |          |
|-------------------|---------------|----------|
| LINE #            | BEARING       | DISTANCE |
| L41               | N 82°01'33" E | 83.34    |
| L42               | S 36°41'11" E | 125.62   |
| L43               | S 89°15'08" E | 45.77    |
| L44               | S 89°15'08" E | 119.97   |
| L45               | S 00°44'52" W | 105.18   |
| L46               | S 89°15'08" E | 134.97   |
| L47               | S 89°15'08" E | 208.26   |
| L48               | S 89°15'08" E | 34.70    |
| L49               | S 00°44'52" W | 109.35   |
| L50               | N 89°15'08" W | 90.42    |
| L51               | S 00°44'52" W | 124.35   |
| L52               | S 89°15'08" E | 105.42   |
| L53               | S 89°15'08" E | 105.03   |
| L54               | N 89°15'08" W | 105.02   |
| L55               | N 89°15'08" W | 105.02   |
| L56               | N 89°15'08" W | 105.03   |
| L57               | S 00°44'52" W | 124.35   |
| L58               | N 89°15'08" W | 105.02   |
| L59               | S 00°44'52" W | 124.35   |
| L60               | N 89°15'08" W | 105.02   |
| L61               | N 89°15'08" W | 105.03   |
| L62               | N 89°15'08" W | 105.03   |
| L63               | S 00°44'52" W | 124.35   |
| L64               | N 89°15'08" W | 105.02   |
| L65               | S 00°44'52" W | 124.35   |
| L66               | N 89°15'08" W | 41.88    |
| L67               | N 09°12'52" E | 96.05    |
| L68               | S 71°33'58" W | 90.42    |
| L69               | N 20°01'35" E | 77.72    |
| L70               | N 69°58'25" W | 167.70   |
| L71               | N 20°01'35" E | 91.22    |
| L72               | N 69°58'25" W | 136.01   |
| L73               | N 20°01'35" E | 114.23   |
| L74               | S 63°09'18" E | 29.85    |
| L75               | S 63°09'18" E | 14.43    |
| L76               | S 89°14'12" E | 56.18    |
| L77               | S 00°44'52" W | 162.18   |
| L78               | S 89°14'12" E | 80.63    |
| L79               | N 00°45'48" E | 161.54   |
| L80               | S 89°14'12" E | 80.95    |
| L81               | S 00°45'48" W | 160.90   |

| PARCEL LINE TABLE |               |          |
|-------------------|---------------|----------|
| LINE #            | BEARING       | DISTANCE |
| L82               | S 89°14'12" E | 81.27    |
| L83               | N 00°45'48" E | 160.25   |
| L84               | S 89°14'12" E | 81.61    |
| L85               | S 00°45'48" W | 159.60   |
| L86               | S 89°14'12" E | 81.94    |
| L87               | N 00°45'48" E | 158.95   |
| L88               | S 89°14'12" E | 82.27    |
| L89               | S 00°45'48" W | 158.29   |
| L90               | S 89°14'12" E | 67.95    |
| L91               | S 00°44'52" W | 142.63   |
| L92               | S 00°44'52" W | 90.71    |
| L93               | N 89°15'08" W | 123.99   |
| L94               | S 00°44'52" W | 105.74   |
| L95               | S 89°14'12" E | 109.00   |
| L96               | S 89°14'12" E | 123.49   |
| L97               | S 00°44'52" W | 105.77   |
| L98               | S 89°14'12" E | 123.45   |
| L99               | S 00°44'52" W | 105.81   |
| L100              | S 89°14'12" E | 123.41   |
| L101              | S 00°44'52" W | 105.84   |
| L102              | S 89°14'12" E | 94.30    |
| L103              | N 20°01'35" E | 101.51   |
| L104              | N 20°01'35" E | 111.60   |
| L105              | N 20°01'35" E | 90.86    |
| L106              | N 89°15'08" W | 110.64   |
| L107              | S 00°44'52" W | 105.72   |
| L108              | N 89°15'08" W | 112.34   |
| L109              | S 00°44'52" W | 105.72   |
| L110              | N 89°15'08" W | 112.34   |
| L111              | S 00°44'52" W | 105.72   |
| L112              | N 89°15'08" W | 112.34   |
| L113              | S 00°44'52" W | 105.72   |
| L114              | N 89°15'08" W | 112.34   |
| L115              | S 00°44'52" W | 105.60   |
| L116              | N 89°15'08" W | 108.99   |
| L117              | S 00°44'52" W | 90.72    |
| L118              | N 89°15'08" W | 123.99   |
| L119              | S 00°44'52" W | 105.34   |
| L120              | S 89°14'12" E | 105.34   |
| L121              | S 00°44'52" W | 32.47    |
| L122              | S 89°32'47" E | 17.45    |

| PARCEL LINE TABLE |               |          |
|-------------------|---------------|----------|
| LINE #            | BEARING       | DISTANCE |
| L123              | S 00°27'13" W | 10.00    |
| L124              | S 89°32'47" E | 17.40    |
| L125              | N 20°59'25" W | 24.13    |
| L126              | N 89°15'08" W | 50.00    |
| L127              | S 89°15'08" E | 268.22   |
| L128              | N 89°15'08" W | 782.43   |
| L129              | N 20°01'35" E | 399.33   |
| L130              | S 89°14'12" E | 650.58   |
| L131              | S 15°42'00" E | 219.92   |
| L132              | S 89°15'08" E | 423.03   |
| L133              | S 00°44'52" W | 279.01   |
| L134              | S 89°15'08" E | 244.80   |
| L135              | S 00°44'52" W | 279.01   |
| L136              | S 89°15'08" E | 938.56   |
| L137              | N 89°15'08" W | 549.18   |
| L138              | S 89°15'08" E | 512.29   |
| L139              | N 41°15'28" E | 30.97    |
| L140              | N 41°15'28" E | 30.97    |
| L141              | S 00°00'00" E | 1.95     |
| L142              | S 00°44'17" W | 216.62   |
| L143              | N 17°55'14" W | 103.47   |
| L144              | S 00°00'00" E | 230.00   |
| L145              | N 90°00'00" E | 197.07   |
| L146              | S 00°00'00" E | 19.64    |
| L147              | S 00°00'00" E | 19.90    |
| L148              | N 90°00'00" W | 12.93    |
| L149              | S 00°00'00" E | 160.70   |
| L150              | N 89°15'08" W | 166.45   |
| L151              | N 89°15'08" W | 166.71   |
| L152              | N 00°00'00" E | 49.30    |
| L153              | N 90°00'00" W | 208.98   |
| L154              | N 17°55'14" W | 106.65   |
| L155              | S 00°44'17" W | 213.33   |
| L156              | S 38°27'11" W | 78.01    |
| L157              | S 00°44'52" W | 442.81   |
| L158              | N 00°44'52" E | 442.81   |
| L159              | N 38°27'11" E | 78.01    |
| L160              | N 89°15'08" W | 29.47    |
| L161              | S 00°44'52" W | 32.47    |
| L162              | S 00°44'52" W | 32.47    |

| PARCEL LINE TABLE |               |          |
|-------------------|---------------|----------|
| LINE #            | BEARING       | DISTANCE |
| L163              | S 89°15'08" E | 29.53    |
| L164              | S 45°44'52" W | 7.17     |
| L165              | N 89°15'08" W | 29.53    |
| L166              | N 00°44'52" E | 32.47    |
| L167              | N 00°44'52" E | 32.47    |
| L168              | S 89°15'08" E | 29.47    |
| L169              | S 44°08'14" E | 7.15     |
| L170              | S 49°27'36" E | 173.69   |
| L171              | N 00°44'52" E | 124.35   |
| L172              | S 00°44'52" W | 124.35   |
| L173              | S 00°44'52" W | 120.18   |
| L174              | S 88°46'49" E | 30.00    |
| L175              | S 88°46'49" E | 30.00    |
| L176              | S 89°14'12" E | 7.22     |
| L177              | N 45°04'54" E | 306.98   |
| L178              | N 00°44'52" E | 342.12   |

| LOT | ADDRESS           |
|-----|-------------------|
| 101 | 3789 W. / 1811 S. |
| 102 | 1825 S.           |
| 103 | 1841 S.           |
| 104 | 1855 S.           |
| 105 | 1871 S.           |
| 106 | 1885 S.           |
| 107 | 1901 S.           |
| 108 | 1915 S.           |
| 109 | 1931 S.           |
| 110 | 1947 S.           |
| 111 | 1961 S.           |
| 112 | 1977 S.           |
| 113 | 1991 S.           |
| 114 | 1988 S. / 3761 W. |
| 115 | 3749 W.           |
| 116 | 3737 W.           |
| 117 | 3725 W.           |
| 118 | 3711 W.           |
| 119 | 3701 W.           |
| 120 | 3687 W.           |
| 121 | 3673 W.           |
| 122 | 1957 S. / 3685 W. |
| 123 | 3702 W.           |
| 124 | 3722 W.           |
| 125 | 3738 W.           |
| 126 | 3758 W. / 1958 S. |
| 127 | 1942 S.           |
| 128 | 1927 S. / 3759 W. |
| 129 | 3741 W.           |
| 130 | 3723 W.           |
| 131 | 3705 W.           |
| 132 | 3689 W.           |
| 133 | 3671 W.           |
| 134 | 3662 W. / 1958 S. |
| 135 | 1942 S.           |
| 136 | 1928 S.           |

| LOT | ADDRESS |
|-----|---------|
| 137 | 1918 S. |
| 138 | 3650 W. |