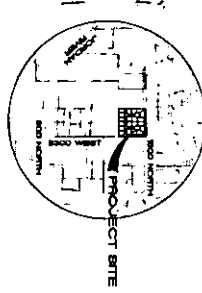
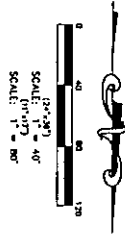




EXHIBIT A



NOTES:  
1. ALL PIPE IS TO BE 8" ADS STORM DRAIN  
PIPE INSTALLED @ 0.30% GRADE.

NO.	DATE	REVISION	BY	CHECKED BY
1				
2				
3				
4				
5				

**TRANE ENGINEERING, P.C.**  
CONSULTING ENGINEERS AND LAND SURVEYORS  
27 EAST MAIN, LEHI, UTAH 84043 (801) 768-4344

LEHI, UTAH

**SPRING HAVEN PLAT "A"**  
A RESIDENTIAL DEVELOPMENT

LAND DRAIN DESIGN  
JOB NO. HE-485  
SHEET NO. 1 OF 1

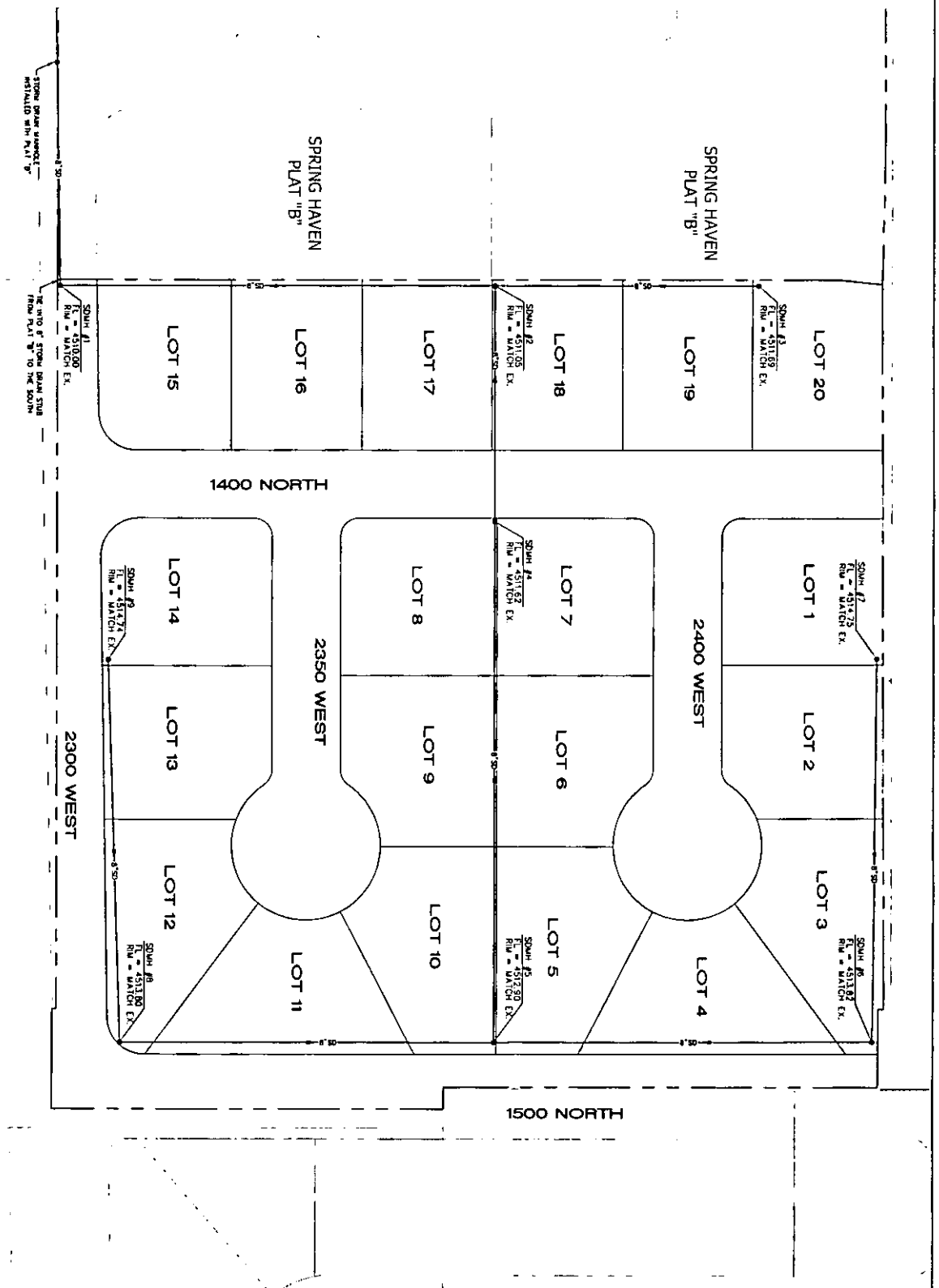


EXHIBIT "B"

Easement descriptions for Spring Haven, Plat A, Lehi, Utah are as follows:

The North 20 feet of Lots 4, 10, and 12

The West 20 feet of Lot 2

The East 20 feet of Lots 12 & 14

The South 20 feet of Lots 16 and 19

The West 10 feet of Lots 8, 9 and 10

SPRING HAVEN PLAT 'A' SUBSURFACE DRAIN EASEMENT EXHIBIT

