

DREAMS END SUBDIVISION

PART OF SE 1/4 SE 1/4 SEC. 11

T 4 N, R 1 W

SLBM

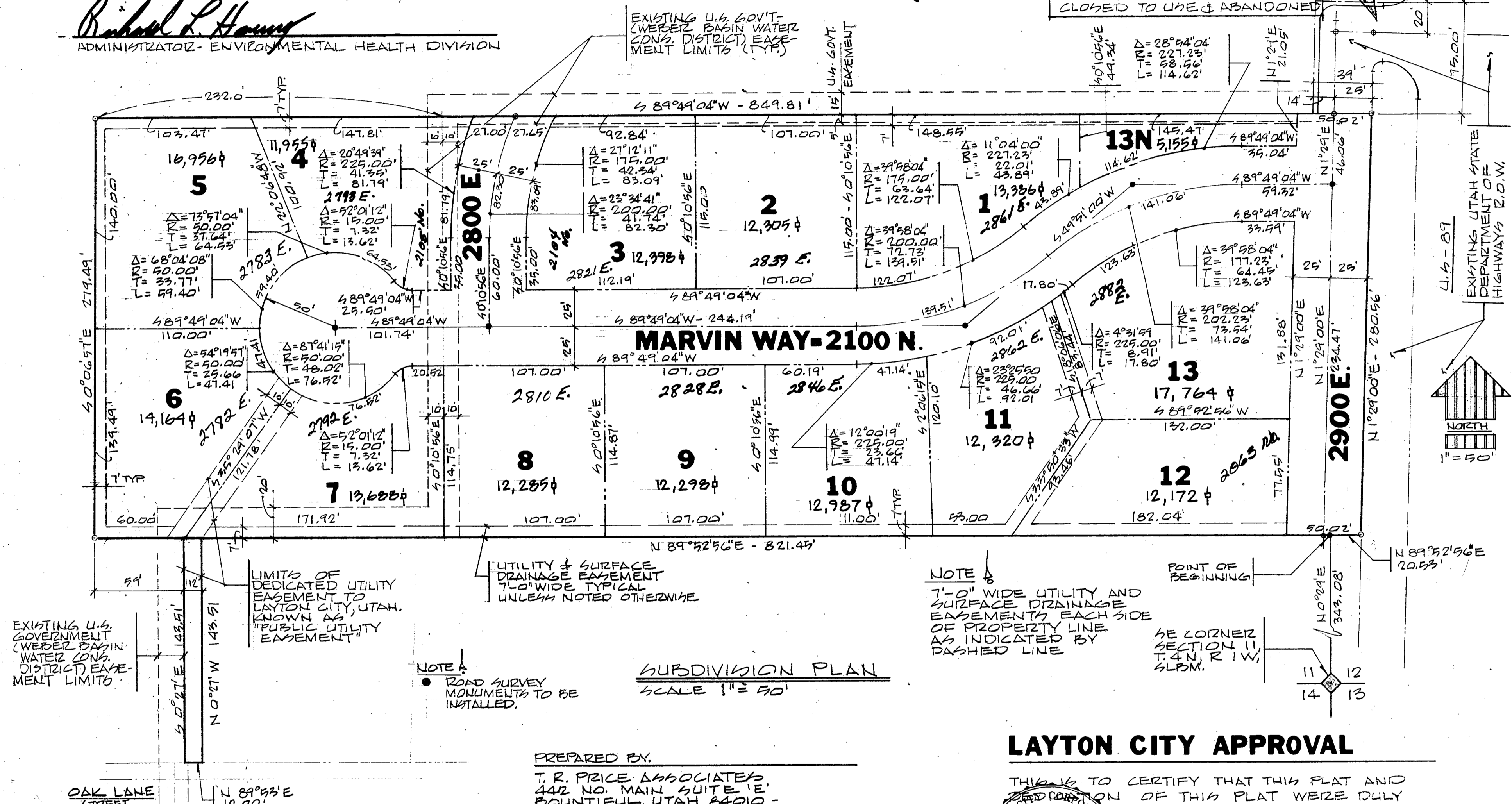
LAYTON, UTAH

DAVIS CO. BOARD OF HEALTH

APPROVED BY THE DAVIS COUNTY BOARD OF HEALTH - ENVIRONMENTAL HEALTH DIVISION ON THIS 25 DAY OF January, 1980.

Richard L. Harvey
ADMINISTRATOR - ENVIRONMENTAL HEALTH DIVISION

NOTE:
AT SUCH TIME AS 2900 EAST IS EXTENDED NORTH OF SUBDIVISION BOUNDARY EXISTING 40 FT. WIDE ACCESS TO U.S. 89 HIGHWAY SHALL BE CLOSED TO USE & ABANDONED



MARVIN WAY-2100 N.

SUBDIVISION PLAN

SCALE 1" = 30'

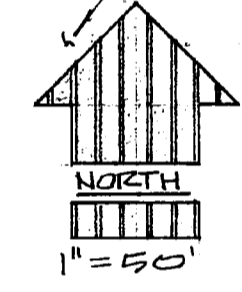
NOTE:
7'-0" WIDE UTILITY AND SURFACE DRAINAGE EASEMENTS EACH SIDE OF PROPERTY LINE AS INDICATED BY DASHED LINE

NOTE:
ROAD SURVEY MONUMENTS TO BE INSTALLED.

EXISTING U.S. GOVERNMENT (WESEB) BASIN WATER CONG. DISTRICT EASEMENT LIMITS

LIMITS OF DEDICATED UTILITY EASEMENT TO LAYTON CITY, UTAH, KNOWN AS "PUBLIC UTILITY EASEMENT"

UTILITY & SURFACE DRAINAGE EASEMENT 7'-0" WIDE TYPICAL UNLESS NOTED OTHERWISE



EXISTING UTAH STATE DEPARTMENT OF HIGHWAYS E.I.O.W.

LAYTON CITY APPROVAL

THIS IS TO CERTIFY THAT THIS PLAT AND DESCRIPTION OF THIS PLAT WERE DULY APPROVED AND ACCEPTED BY THE CITY OF LAYTON CITY, DAVIS COUNTY, UTAH, THIS 17 DAY OF January, 1980.

Richard L. Harvey
Recorder

Lewis G. Shields
MAYOR

LAYTON CITY ENG.

I HEREBY CERTIFY THAT I HAVE REVIEWED THE LINES OF SURVEY OF THE FOREGOING SUBDIVISION PLAT AND DESCRIPTION OF THE EMPRACED LAND THEREIN AND FIND THEM TO BE CORRECT AND TO AGREE WITH RECORDS IN THIS OFFICE.

SIGNED THIS 25 DAY OF JAN, 1980
Richard L. Harvey
LAYTON CITY ENGINEER

PREPARED BY:
T. R. PRICE ASSOCIATES
442 NO. MAIN SUITE 1E
BOUNTIFUL, UTAH 84010
TERRY R. PRICE - ENGINEER
J. RUSSELL MANNING - LAND SURVEYOR

LAYTON CITY PLANNING COMM.

APPROVED BY THE LAYTON CITY PLANNING COMMISSION ON THE 8 DAY OF January, 1980.

CHAIRMAN: *as listed*

SURVEYOR'S CERTIFICATE

I, J. RUSSELL MANNING, A REGISTERED LAND SURVEYOR IN THE STATE OF UTAH, DO HEREBY CERTIFY THAT THIS PLAT OF DREAMS END SUBDIVISION IN DAVIS COUNTY, UTAH HAS BEEN CORRECTLY DRAWN TO THE DESIGNATED SCALE AND IS A TRUE AND CORRECT REPRESENTATION OF THE FOLLOWING DESCRIPTION OF LANDS INCLUDED IN SAID SUBDIVISION BASED ON DATA COMPILED FROM RECORDS IN THE DAVIS COUNTY RECORDER'S OFFICE, AND OF A SURVEY MADE ON THE GROUND.

SIGNED THIS 15th DAY OF January, 1980.

3080
LICENSE NUMBER

J. Russell Manning
SIGNATURE - J. RUSSELL MANNING

OWNER'S DEDICATION

I, THE UNDERSIGNED OWNER OF THE HEREIN DESCRIBED TRACT OF LAND, HEREBY SET APART AND SUBDIVIDE THE SAME INTO LOTS AND STREETS AS SHOWN ON THIS PLAT AND NAME SAID TRACT DREAMS END SUBDIVISION AND HEREBY DEDICATE, GRANT, AND CONVEY TO LAYTON CITY, DAVIS COUNTY, UTAH, ALL THOSE PARTS OR PORTIONS OF SAID TRACT OF LAND DESIGNATED AS STREETS AND PUBLIC UTILITY EASEMENTS, THE SAME TO BE USED AS PUBLIC PROPERTY, PUBLIC THOROUGHFARES, AND PUBLIC UTILITY EASEMENTS FOREVER, AND ALSO DEDICATE TO LAYTON CITY, DAVIS COUNTY, UTAH THOSE CERTAIN STRIPS AS EASEMENTS FOR PUBLIC UTILITIES AND SURFACE DRAINAGE PURPOSES AS SHOWN HEREON, THE SAME TO BE USED FOR THE INSTALLATION, MAINTENANCE, AND OPERATION OF PUBLIC UTILITY SERVICE LINES AND DRAINAGE AS MAY BE AUTHORIZED BY LAYTON CITY.

SIGNED THIS ___ DAY OF ___, 19__

LEONA HACKMEISTER - OWNER

ACKNOWLEDGEMENT

STATE OF: UTAH
COUNTY OF: DAVIS

ON THE ___ DAY OF ___, 19__ PERSONALLY APPEARED BEFORE ME, THE UNDERSIGNED NOTARY PUBLIC, THE SIGNER OF THE ABOVE OWNER'S DEDICATION, ___ IN NUMBER, WHO DULY ACKNOWLEDGED TO ME THAT THEY SIGNED IT FREELY AND VOLUNTARILY AND FOR THE PURPOSES THEREIN MENTIONED.

COMMISSION EXPIRES _____ NOTARY PUBLIC

BOUNDARY DESCRIPTION

BEGINNING AT A POINT WHICH IS N 0° 29' 00" E, 343.08 FT. ALONG THE SECTION LINE FROM THE SE CORNER OF SECTION 11, T. 4 N., R. 1 W., SLBM. THENCE N 89° 52' 56" E, 20.93 FT. TO THE WEST LINE OF HWY 89; THENCE N 1° 29' 00" E, 280.56 FT. ALONG SAID HWY LINE; THENCE S 89° 49' 04" W, 849.81 FT.; THENCE S 0° 06' 51" E, 219.49 FT.; THENCE N 89° 52' 56" E, 821.45 FT. TO POINT OF BEGINNING. (CONTAINING 5.44 ACRES)

BANKS OF BEARINGS IS THE MONUMENTED LINE ALONG THE WEST RIGHT-OF-WAY LINE OF U.S. HIGHWAY 89. SUBJECT TO EASEMENTS OF RECORD.

COUNTY RECORDER

ENTRY NO. 56448 FEE PAID \$17.00 FILED FOR RECORD AND RECORDED THIS 9th DAY OF MAY, 1980 A.D. AT 11:15 A.M. IN BOOK 824 OF O.R. PAGE 94
BY Carol Dean Page DEPUTY DAVIS COUNTY RECORDER