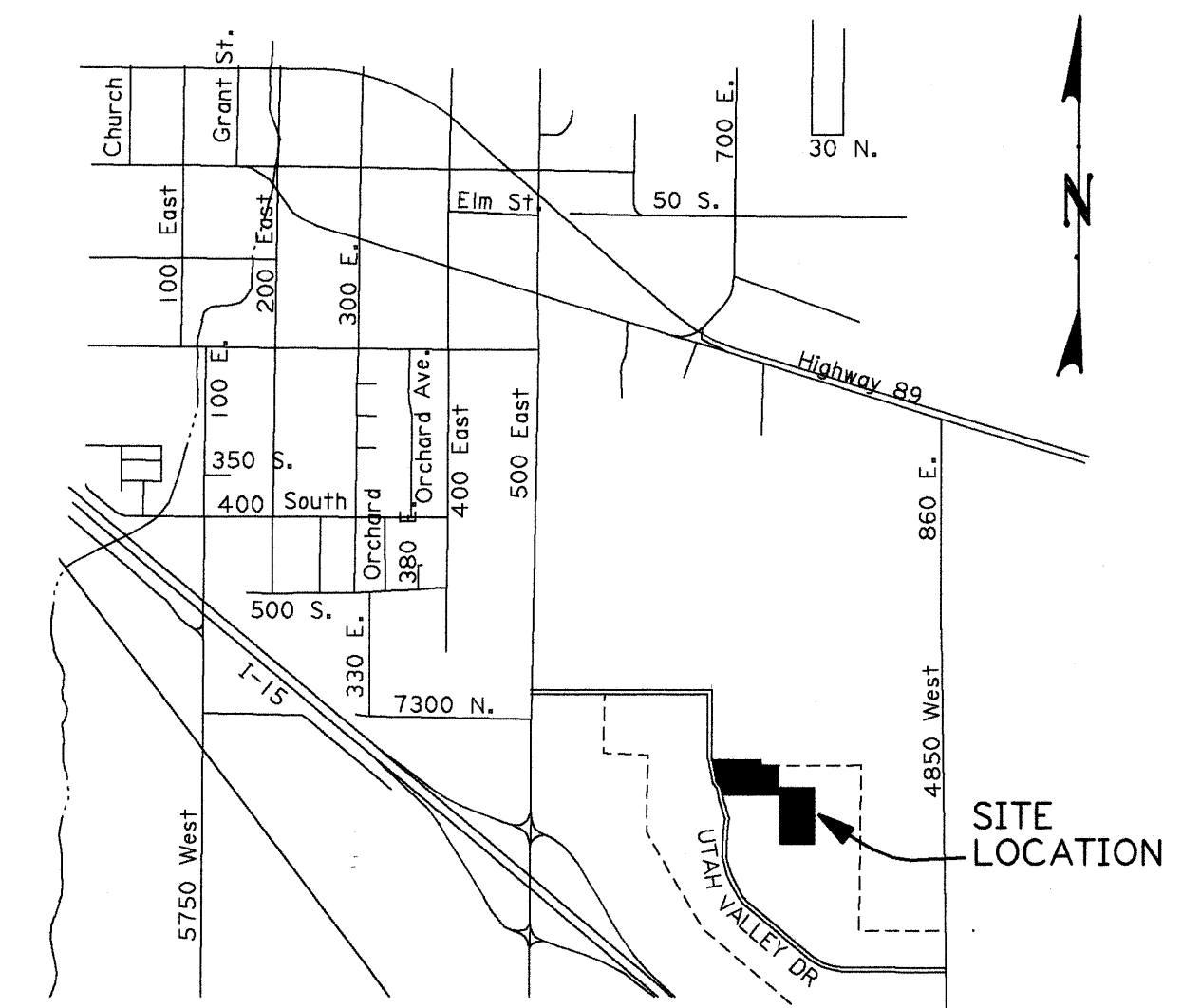
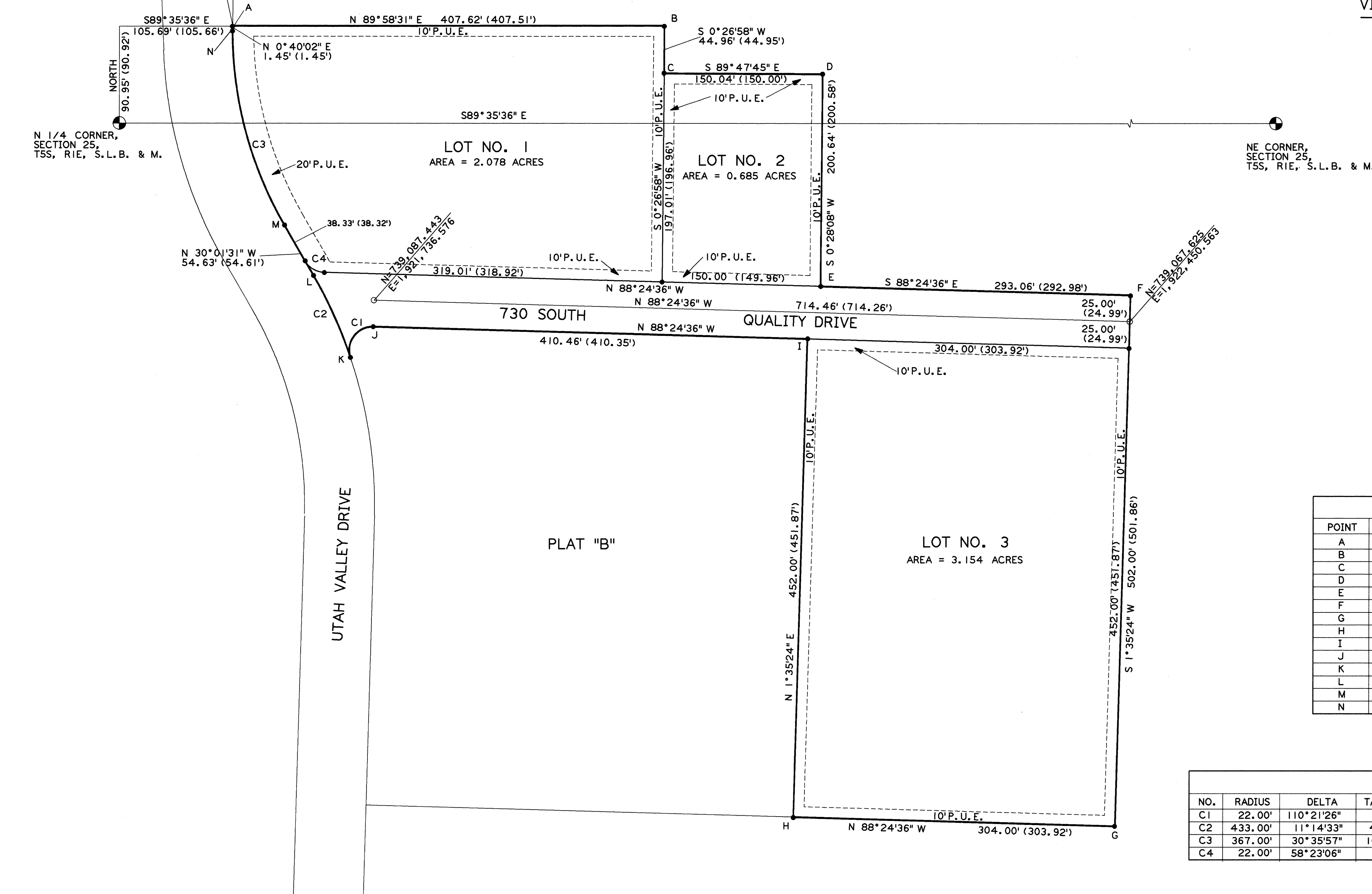


SCALE: 1" = 60'



VICINITY MAP

POINT	NORTHING	EASTING
A	739,346.621	1,921,602.884
B	739,346.797	1,922,010.389
C	739,301.851	1,922,010.036
D	739,301.317	1,922,160.033
E	739,100.737	1,922,158.392
F	739,092.608	1,922,451.255
G	738,590.940	1,922,437.330
H	738,599.373	1,922,133.532
I	739,051.073	1,922,146.070
J	739,062.460	1,921,735.882
K	739,033.397	1,921,714.448
L	739,110.624	1,921,679.411
M	739,157.906	1,921,652.084
N	739,345.171	1,921,602.867

NO.	RADIUS	DELTA	TANGENT	LENGTH	CHORD	CHORD BEARING
C1	22.00'	110°21'26"	31.63'	42.37'	36.12'	S 36°24'33" W
C2	433.00'	11°14'33"	42.62'	84.96'	84.83'	N 24°24'13" W
C3	367.00'	30°35'57"	100.40'	196.00'	193.68'	N 14°43'32" W
C4	22.00'	58°23'06"	12.29'	22.42'	21.46'	N 59°13'03" W

NOTE:
 ○ = SUBDIVISION MONUMENT
 COORDINATES SHOWN ARE STATE PLANE
 DISTANCES IN () ARE GRID DISTANCES

SURVEYOR'S CERTIFICATE
 I, VICTOR E. HANSEN, DO HEREBY CERTIFY THAT I AM A REGISTERED LAND SURVEYOR, AND THAT I HOLD CERTIFICATE NO. 176895, AS PRESCRIBED UNDER THE LAWS OF THE STATE OF UTAH. I FURTHER CERTIFY BY AUTHORITY OF THE OWNERS, I HAVE MADE A SURVEY OF THE TRACT OF LAND SHOWN ON THIS PLAT AND DESCRIBED BELOW, AND HAVE SUBDIVIDED SAID TRACT OF LAND INTO LOTS, BLOCKS, STREETS, AND EASEMENTS AND THE SAME HAS BEEN CORRECTLY SURVEYED AND STAKED ON THE GROUND AS SHOWN ON THIS PLAT AND THAT THIS IS TRUE AND CORRECT.

BOUNDARY DESCRIPTION
 COMMENCING S 89°35'36" E ALONG THE SECTION LINE 105.69 FEET AND NORTH 90.95 FEET FROM THE NORTH 1/4 CORNER OF SECTION 25 T5S, R1E, S.L.B. & M. THENCE AS FOLLOWS:

COURSE	DISTANCE	REMARKS
N 89°58'31" E	407.62'	
S 0°26'58" W	44.96'	
S 89°47'45" E	150.04'	
S 0°28'08" W	200.64'	
S 88°24'36" E	293.06'	
S 1°35'24" W	502.00'	
N 88°24'36" W	304.00'	TO SOUTHEAST CORNER OF PLAT "B"
N 1°35'24" E	452.00'	ALONG EAST LINE OF PLAT "B"
N 88°24'36" W	410.46'	
ARC LENGTH	42.37'	CHORD BEARS S 36°24'33" W, 36.12 FEET TO EAST SIDE OF UTAH VALLEY DRIVE, THENCE ALONG UTAH VALLEY DRIVE THE FOLLOWING COURSES AND DISTANCES: CHORD BEARS N 24°24'13" W, 84.83 FEET
ARC LENGTH	84.96'	
N 30°01'31" W	54.63'	
ARC LENGTH	196.00'	CHORD BEARS N 14°43'32" W, 193.68 FEET
N 0°40'02" E	1.45'	TO THE POINT OF BEGINNING
AREA = 6.795 ACRES MORE OR LESS		

BASIS OF BEARING = S 89°35'36" E ALONG SECTION LINE ACCORDING TO THE UTAH STATE PLANE COORDINATE SYSTEM.

DATE: 7-29-94
 SURVEYOR: Victor E. Hansen (SEE SEAL BELOW)

OWNER'S DEDICATION
 KNOW ALL MEN BY THESE PRESENTS THAT WE, ALL OF THE UNDERSIGNED OWNERS OF ALL OF THE PROPERTY DESCRIBED IN THE SURVEYOR'S CERTIFICATE AND SHOWN ON THIS MAP AND SUBJECT TO ANY CONDITIONS AND RESTRICTIONS STATED HEREON, HAVE CAUSED THE SAME TO BE SUBDIVIDED INTO LOTS, BLOCKS, STREETS AND EASEMENTS AND DO HEREBY DEDICATE THE STREETS AND OTHER PUBLIC AREAS AS INDICATED HEREON FOR PERPETUAL USE OF THE PUBLIC. IN WITNESS WHEREOF WE HAVE HEREUNTO SET OUR HANDS THIS 10th DAY OF August, A.D. 1994.

NORTH VALLEY INVESTMENT GROUP
 By: Wallace Woodruff, Michael Ford, Kristin S. Waldron (SEE SEALS BELOW)

STATE OF UTAH, COUNTY OF UTAH, S.S.
 ON THE 10th DAY OF August, A.D. 1994, PERSONALLY APPEARED BEFORE ME THE SIGNERS OF THE FOREGOING DEDICATION WHO DULY ACKNOWLEDGE TO ME THAT THEY DID EXECUTE THE SAME.

MY COMMISSION EXPIRES: [Signature]
 NOTARY PUBLIC (SEE SEAL BELOW)

ACCEPTANCE BY LEGISLATIVE BODY
 THE City Council of American Fork, COUNTY OF UTAH, APPROVES THIS SUBDIVISION SUBJECT TO THE CONDITIONS AND RESTRICTIONS STATED HEREON HEREBY ACCEPTS THE DEDICATION OF ALL STREETS, EASEMENTS, AND OTHER PARCELS OF LAND INTENDED FOR PUBLIC PURPOSES FOR THE PERPETUAL USE OF THE PUBLIC THIS 20th DAY OF July, A.D. 1994.

APPROVED: [Signatures]
 ENGINEER (SEE SEAL BELOW) ATTEST: [Signature] CLERK-RECORDER (SEE SEAL BELOW)

BOARD OF HEALTH
 APPROVED SUBJECT TO THE FOLLOWING CONDITIONS:

CITY-COUNTY HEALTH DEPARTMENT

FIRE MARSHAL
 APPROVED SUBJECT TO THE FOLLOWING CONDITIONS:

FIRE MARSHAL

PLANNING COMMISSION APPROVAL
 APPROVED THIS 20th DAY OF July, A.D. 1994, BY THE PLANNING COMMISSION.

[Signatures]
 DIRECTOR-SECRETARY CHAIRMAN, PLANNING COMMISSION

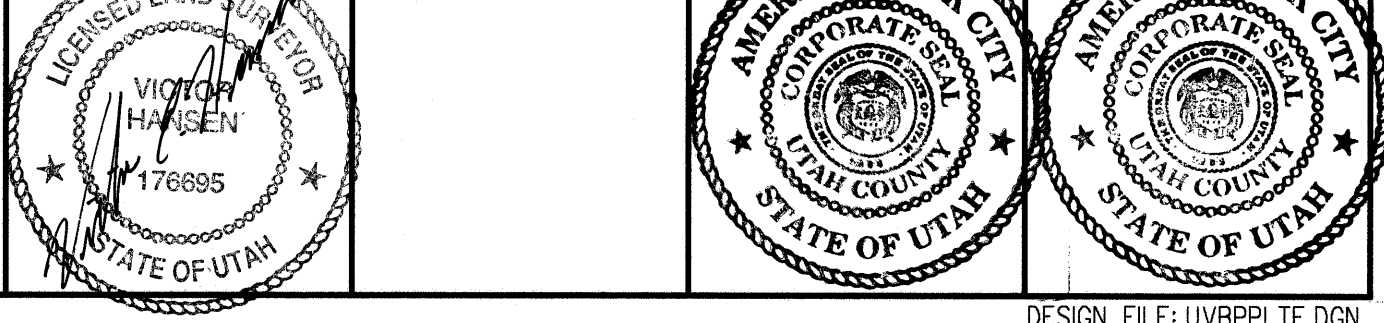
CONDITIONS OF APPROVAL

PLAT "F" ENT 68296 MAP 8 5684
 ALMA B REID UTAH CO RECORDER BY MB
 1994 AUG 26 9:32 AM FEE 33.00
 RECORDED FOR AMERICAN FORK CITY

UTAH VALLEY BUSINESS PARK

SUBDIVISION
 AMERICAN FORK, UTAH COUNTY, UTAH

SCALE: 1" = 60 FEET



5684-68

