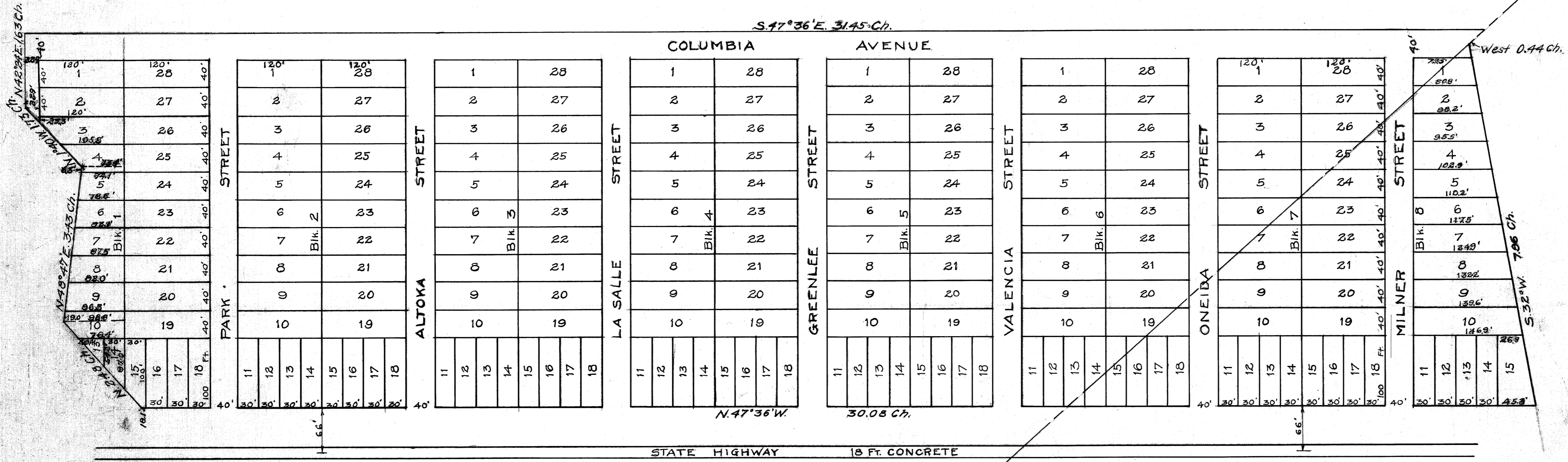


MAP OF  
STEEL CITY SUBDIVISION PLAT A  
UTAH COUNTY, UTAH.  
SCALE: 1 IN. 100 FT.

*Refer to Amended plat*



**ENGINEER'S CERTIFICATE.**  
I hereby certify that I have surveyed the land shown on this Map, and that the plat thereof showing its division into lots, blocks, and streets is true and correct. The land is described as follows:-  
Commencing 10.48 Chains West of the South East Corner of Section 17, T. 7 S. R. 3 E. S. L. B. & M.; thence S. 32° W. 7.96 Chains, N 47° 36' W. parallel to center line of paved road, 30.08 Chains, to a point 3.05 Chains East of the mid-section line; thence North 2.48 Chains, N. 48° 47' E. 3.43 Chains, N. 1° 40' W. 1.73 Chains, N. 42° 24' E. 1.63 Chains, S. 47° 36' E. 31.45 Chains, West 0.44 Chains to beginning. Area 25.09 Acres.

*E.A. Jacob*, Civil Engineer.

**OWNERS' DEDICATION.**  
KNOW ALL MEN BY THESE PRESENTS:- That we Ole V. Sorenson, Alta V. Sorenson, Thomas Boardman, and S.A. Cotterell, the owners of the property described in the Engineers Certificate hereon, and delineated upon this Map, have caused the said property to be subdivided into lots, blocks, streets and avenues, and we do hereby dedicate the said streets and avenues, as shown hereon for the perpetual use of the public.  
In witness whereof we have hereunto subscribed our hands this 24 day of November, 1922.

Witnessed by  
*Reed K. Baker*  
*W.A. Ray*  
STATE OF UTAH }  
COUNTY OF UTAH } SS.

*Ole V. Sorenson*  
*Alta V. Sorenson*  
*Thomas Boardman*  
*S.A. Cotterell*

On the 24<sup>th</sup> day of November, A.D. 1922, personally appeared before me Ole V. Sorenson, Alta V. Sorenson, Thomas Boardman, and S.A. Cotterell, the signers of the above instrument, who duly acknowledged to me that they executed the same.  
*W.A. Ray*, Notary Public.  
Residing at Provo, Utah.  
M Commission expires Jan. 3, 1926.

**COMMISSIONERS' CERTIFICATE**  
This certifies that we have examined this Map of STEEL CITY SUBDIVISION and the same is hereby approved, Nov. 27, 1922.

*James F. Boardman*  
*Leah Wright*  
*Joseph Pease*  
UTAH COUNTY COMMISSIONERS.

*Edward B. Jones*  
UTAH COUNTY SURVEYOR.  
ATTEST:- *Wallace M. Hales*

CLERK OF UTAH COUNTY.  
*Ray Priscilla Christensen*  
Deputy Clerk.  
Recorder of Utah County  
*Leah Ekman*

*Map # 11*

*17# 11# 12# 13# 14# 15# 16# 17# 18# 19# 20# 21# 22# 23# 24# 25# 26# 27# 28#*

Sec. 17  
Sec. 20  
Sec. 16  
Sec. 21  
Sheet # 18 #

*What is the purpose of this plat?*

Map # 71

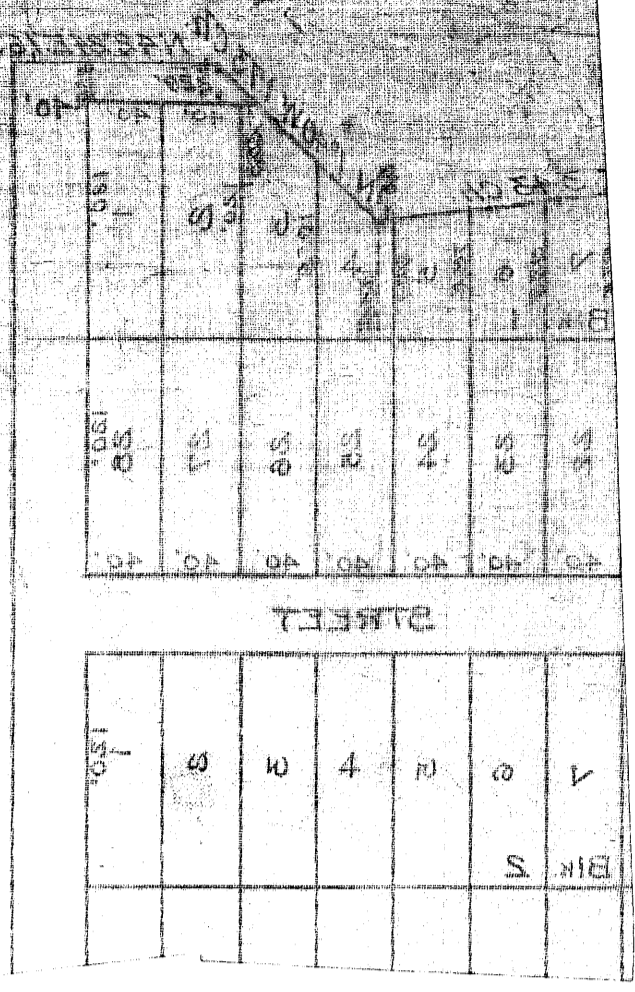
Map # 71  
Steel City Plat A # 71

7554

W H Ray  
Nov 27 1923 3 28

Leah Ekins

Recording Stamp For:  
Steel City  
Plat A  
71\_2



33:5

# 11 90770