

OGDEN COMMERCIAL & INDUSTRIAL PARK - PLAT "D"

PART OF THE NW 1/4 OF SEC. 36, T.6N., R.2W., S.L.B. & M.

BOUNDARY DESCRIPTION

NORTH 1/4 COR. SEC. 36

NOTICE OF COMMENCEMENT
 In testimony whereof, I, the undersigned, County Clerk of Weber County, Utah, have hereunto set my hand and the seal of said County at Ogden, Utah, this 13th day of April, 1981.

ACKNOWLEDGMENT
 On the 13th day of April, 1981, personally appeared before me, the undersigned, County Clerk of Weber County, Utah, the following persons, who being duly sworn, did say that they are the owners and grantors of the above described premises, and that the instrument was signed in behalf of said persons.

John Thibault
 Notary Public

GRANTS MEDICATION
 Ogden City, a municipal corporation of the State of Utah, and the undersigned surveyor of the State of Utah, do hereby set apart and dedicate the same into lots, streets, and easements as shown on the above and foregoing plat thereof, which is hereby made a part thereof, and assign the lands included in said plat the name of OGDEN COMMERCIAL & INDUSTRIAL PARK - PLAT "D". The undersigned surveyor further hereby declares that these parts or portions of said tracts of land designated on said plat as streets, the same to be used as public thoroughfares forever and dedicate perpetual rights and easements over, on and under the land designated on the plat as public easements, the same to be used for the installation, maintenance, and operation of public utility service lines as may be authorized by Ogden City.

Dated this 13th day of April, 1981.
 By: *John Thibault*
 Ogden City Recorder

ACKNOWLEDGMENT
 I, Charles R. Kelley, a Registered Land Surveyor in the State of Utah, do hereby certify that this plat for the OGDEN COMMERCIAL & INDUSTRIAL PARK - PLAT "D" in Weber County, Utah, has been correctly drawn to the designated scale and is a true and correct representation of the above description of lands included in said subdivision, based on data compiled from records in the Weber County Recorder's Office, and of a survey made on the ground.

Signed this 13th day of April, 1981.
 License No. 1355
Charles R. Kelley
 Signature

A part of the Northwest Quarter of Section 36, Township 6 North, Range 2 West, Salt Lake Base and Meridian, U. S. Survey.

Beginning at a point on the South line of 2550 South Street at the Northwest Corner of Plat "C" of the Ogden Commercial and Industrial Park in Ogden City, Weber County, Utah, said point being due South 33.0 feet and N.89°09'W. 1319.01 feet from the Northeast Corner of said Quarter Section; and running thence along the West line of said Plat "C" S.0°28'W. 1283.0 feet; thence N.89°09'W. 400.00 feet; thence S.0°28'W. 22.05 feet; thence N.89°09'W. 265.67 feet; thence S.0°28'W. 664.10 feet; thence N.89°09'W. 603.34 feet to the East line of 1900 West Street; thence along said East line N.0°28'E. 664.10 feet; thence S.89°09'E. 305.66 feet; thence M.0°28'E. 1305.05 feet to the South line of 2550 South Street; thence along said South line S.89°09'E. 963.35 feet to the point of beginning.

Containing 37.850 Acres.

CERTIFICATE OF SURVEY

I, Charles R. Kelley, a Registered Land Surveyor in the State of Utah, do hereby certify that this plat for the OGDEN COMMERCIAL & INDUSTRIAL PARK - PLAT "D" in Weber County, Utah, has been correctly drawn to the designated scale and is a true and correct representation of the above description of lands included in said subdivision, based on data compiled from records in the Weber County Recorder's Office, and of a survey made on the ground.

Signed this 13th day of April, 1981.

1355 License No. *Charles R. Kelley* Signature

OGDEN CITY PLANNING COMMISSION'S APPROVAL

The Ogden City Planning Commission hereby certifies that the foregoing plat and dedication of OGDEN COMMERCIAL & INDUSTRIAL PARK - PLAT "D" was approved by said Commission.

Dated this 13th day of May, 1981.
Kevin Ruge
 Ogden City Planner

ACCEPTANCE BY OGDEN CITY COUNCIL

We, the Mayor and City Recorder of Ogden City, Utah, hereby certify that the above and foregoing plat of OGDEN COMMERCIAL & INDUSTRIAL PARK - PLAT "D" was approved and accepted by the City Council.

On this 13th day of May, 1981.
 By: *James Deam*
 Ogden City Recorder

OGDEN CITY ATTORNEY'S APPROVAL

I have examined the proposed plat of OGDEN COMMERCIAL & INDUSTRIAL PARK - PLAT "D" and in my opinion it conforms with the Utah City Ordinance applicable thereto and now in force.

Signed this 13th day of May, 1981.
John A. G. Smith
 Ogden City Attorney

OGDEN CITY ENGINEERS APPROVAL

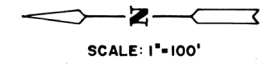
I hereby certify that I have carefully investigated the lines of survey of the foregoing plat and the local description of the lands embraced therein and found them to conform with the lines and monuments of the Ogden City Engineering Department Office, and hereby approve said plat.

Signed this 13th day of May, 1981.
F. Mark Harkness
 Ogden City Public Works Director

OGDEN CITY MANAGERS APPROVAL

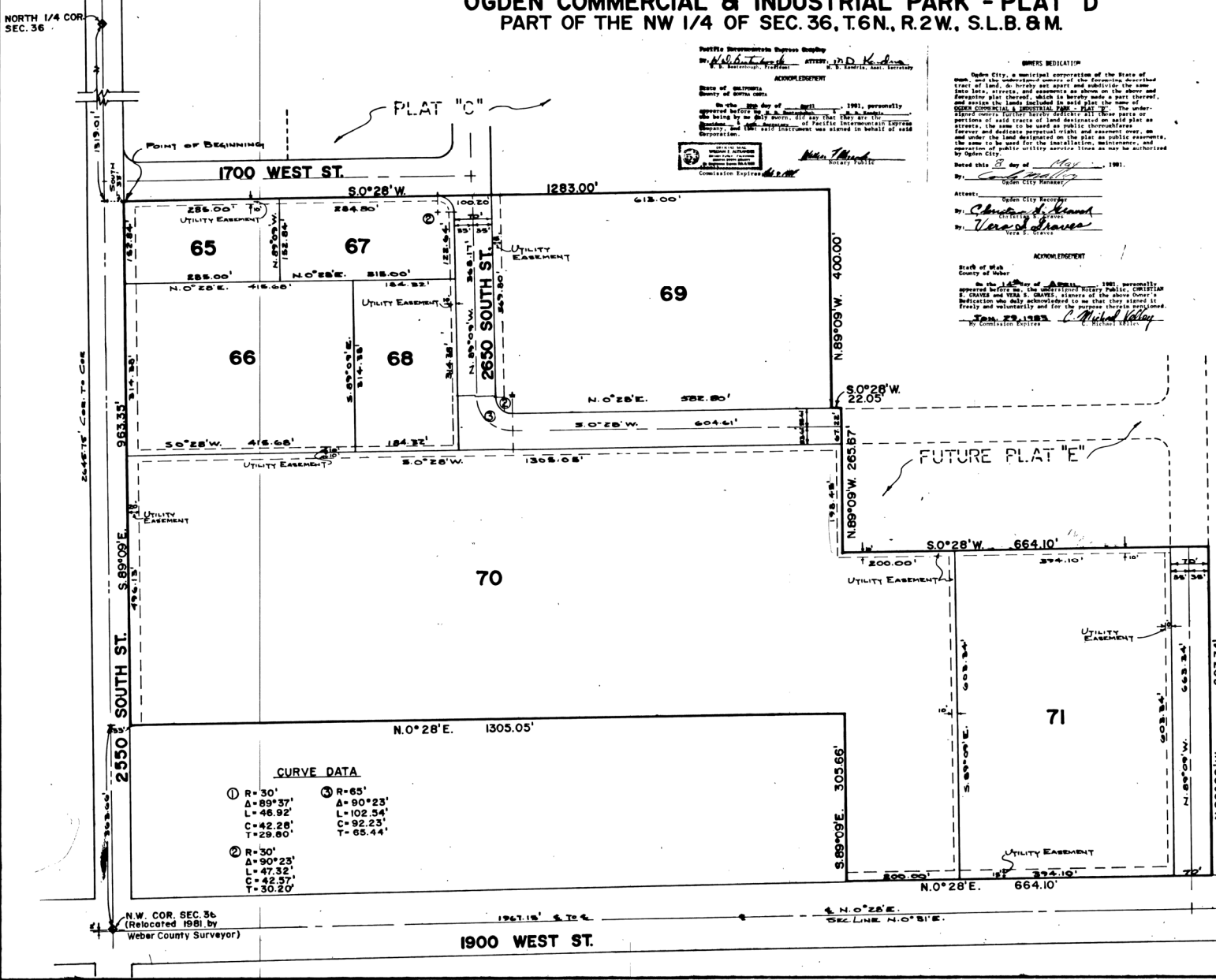
I hereby certify that the requirements of all applicable orders and ordinances are hereby approved by the Ogden City Council of the foregoing plat and dedications have been complied with.

Signed this 13th day of May, 1981.
Carl M. Kelly
 Ogden City Manager



CURVE DATA

① R=30' Δ=89°37' L=46.92' C=42.28' T=29.80'	③ R=65' Δ=90°23' L=102.54' C=92.23' T=65.44'
② R=30' Δ=90°23' L=47.32' C=42.37' T=30.20'	



835443 NO FEE
 RUTH EAMES OLSEN
 WEBER COUNTY RECORDER
 DEPUTY *Ruth Eames Olsen*
 MAY 8 2 11 P.M. '81
 FILED & RECORDED FOR
 OGDEN CITY
 IN BOOK 23 OF PLATS, PAGE 73