

1 2 3 4 5 6 7 8 9 10 11 12 13 14 15 16

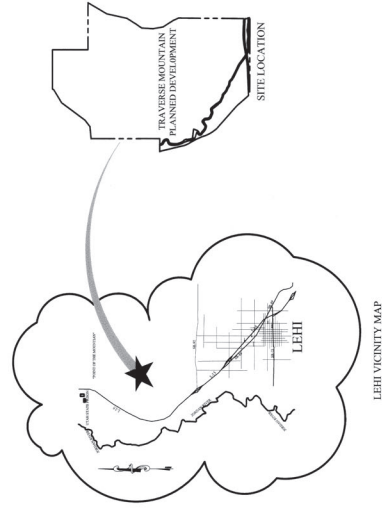
TRAVERSE MOUNTAIN

PLAT "A"

FINAL PLAT

A PLANNED COMMUNITY DEVELOPMENT LEHI CITY, UTAH

(LOCATED IN SECTIONS 19,25,30,31, & 36 TOWNSHIP 4 SOUTH, RANGE 1 EAST, SALT LAKE BASE AND MERIDIAN)



- NOTE:**
1. WATER LINES WILL HAVE INTERNAL LOOPS INSIDE THE LOTS
 2. THIS AREA IS SUBJECT TO THE EVERYDAY SOUNDS, ODORS, SITES, EQUIPMENT, FACILITIES AND ANY OTHER ASPECTS ASSOCIATED WITH AN AGRICULTURAL LIFESTYLE. FUTURE RESIDENTS SHOULD ALSO RECOGNIZE THE RISKS INHERENT WITH LIVESTOCK.
 3. ROAD SYSTEMS INTERIOR TO THE LOTS SHOWN ON THIS PLAT SHALL BE DESIGNED TO LOOP EXCEPT WHERE TERRAIN PROHIBITS.
 4. THE AREA IDENTIFIED AS "OPEN SPACE" IN THE APPROVED AREA PLAN SHALL BE SERVED AS "OPEN SPACE" IN THE POD PLAT MAPPING PROCESS OR IN FUTURE PHASES OF DEVELOPMENT PURSUANT TO THE AREA PLAN.
 5. EXISTING WELLS WILL BE REQUIRED TO BE CAPPED BY A CERTIFIED WELL DRILLER. DOCUMENTATION OF THE CAPPING SHALL BE PROVIDED TO LEHI CITY.
 6. IN THE EVENT OF A CONFLICT BETWEEN THIS MAP AND THE FOX RIDGE AREA PLAN OR THE ANNEXATION AND DEVELOPMENT AGREEMENT APPROVED BY LEHI CITY, AS EITHER MAY BE MODIFIED IN THE FUTURE, THE FOX RIDGE AREA PLAN AND THE ANNEXATION AND DEVELOPMENT AGREEMENT, AS MODIFIED, WILL CONTROL INSTEAD OF THIS MAP.
 7. LEHI CITY HAS THE RIGHT TO APPROVE VARIATIONS FROM THE ARRANGEMENTS ESTABLISHED IN THIS MAP. THESE VARIATIONS MAY NOT BE EVIDENCED IN A RECORDED DOCUMENT.

Developed By
LAND COM FINANCIAL GROUP
5296 South Commerce Drive Suite 100
Salt Lake City, Utah 84107

Engineering By
PSOMAS
2825 E. Cottonwood Parkway, Suite 120
Salt Lake City, Utah 84121

9220-105 (sheet 1 of 3)



DATE	01-16-01
SCALE	
PROJECT NO.	BLCT0103

TRAVERSE MOUNTAIN
FINAL PLAT

PSOMAS

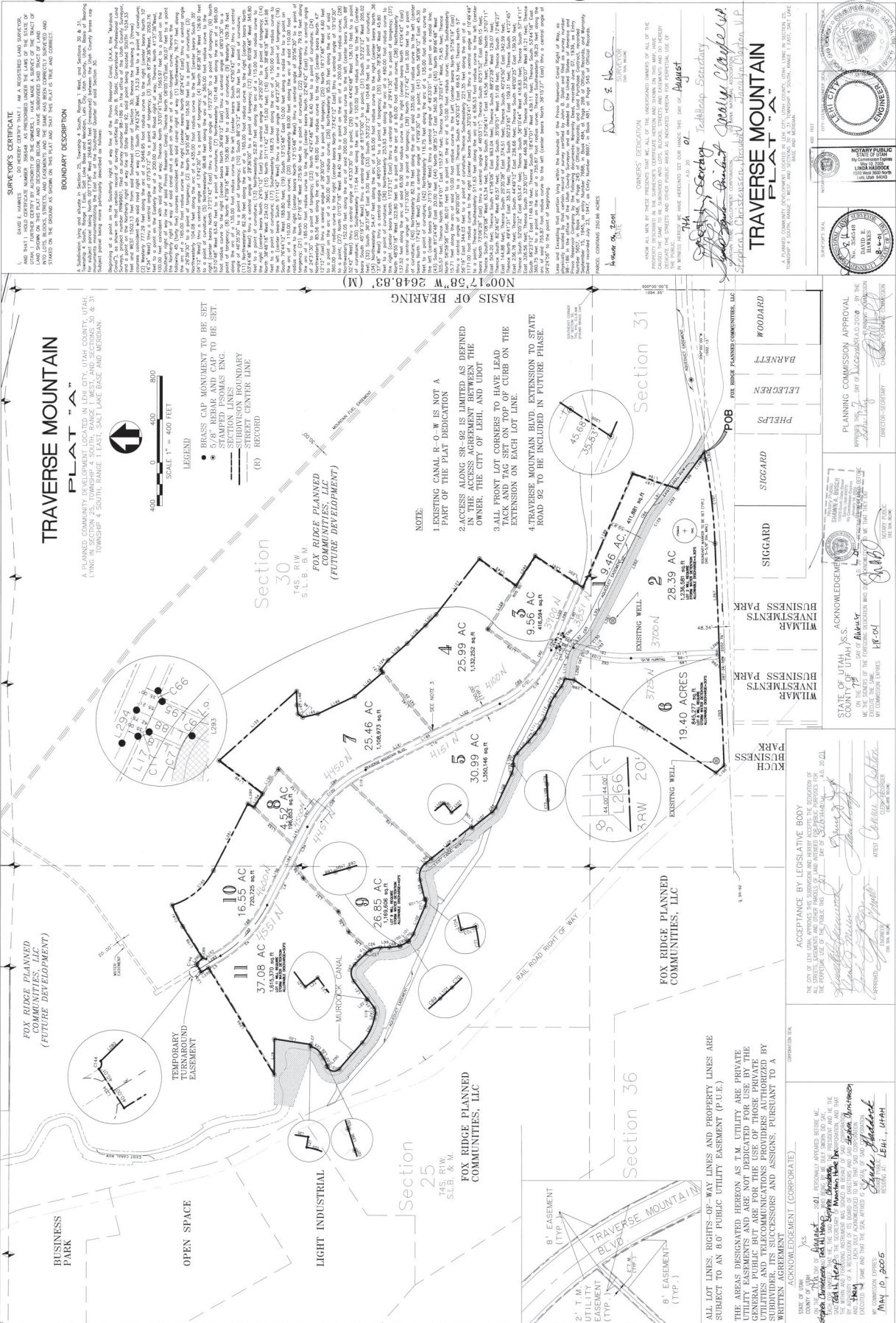
DESIGNED	
DRAWN	
ACAD	
CHECKED	
1 OF 3	

TRAVIS R. JOHNSON
UTAH PROFESSIONAL ENGINEER
LICENSE NO. 12547

TU-010

Sheet 25-785-R10
Date: 01/16/01

9220-105 (sheet 2 of 3)



TRaverse Mountain Flat 'A'

A PLANNED COMMUNITY DEVELOPMENT LOCATED IN LEHI CITY, UTAH COUNTY, UTAH, LIVING IN TOWNSHIP 4 SOUTH, RANGE 1 EAST, SALT LAKE BASIN AND MERIDIAN.

BOUNDARY DESCRIPTION

A Subdivision Map was filed in Section 25, Township 4 South, Range 1 East and Section 30, 31, and 32, T4S, R1E, W6E, on the 15th day of March, 2005, in the Office of the County Clerk, Utah County, Utah. The plat is subject to the provisions of the Utah Subdivision Map Act, Chapter 2, Title 66, Utah Code, and the provisions of the Utah Subdivision Map Act, Chapter 2, Title 66, Utah Code, and the provisions of the Utah Subdivision Map Act, Chapter 2, Title 66, Utah Code.

LEGEND

- BRASS CAP MONUMENT TO BE SET
- 5" R" REBAR AND CAP TO BE SET
- SECTION LINES
- SUBDIVISION BOUNDARY
- STREET CENTER LINE
- (R) RECORD

NOTE:

1. REMAINING CANAL R.O.W. IS NOT A PART OF THE PLAT DEDICATION
2. ACCESS ALONG SR-92 IS LIMITED AS DEFINED IN THE ACCESS AGREEMENT BETWEEN THE OWNER, THE CITY OF LEHI, AND UDOT
3. ALL FRONT LOT CORNERS TO HAVE LEAD MARKERS TAG SET ON TOP OF CURB ON THE EXPANSION ON EACH LOT LINE.
4. TRAVERSE MOUNTAIN BLVD. EXTENSION TO STATE ROAD 92 TO BE INCLUDED IN FUTURE PHASE.

PLANNING COMMISSION APPROVAL

APPROVED BY THE PLANNING COMMISSION OF LEHI CITY, UTAH COUNTY, UTAH, ON MAY 12, 2005.

ACCEPTANCE BY LEGISLATIVE BODY

THE CITY OF LEHI HAS REVIEWED AND APPROVED THIS PLAT AND THE STREETS, EASEMENTS AND OTHER FEATURES THEREON AND HAS ORDERED THE CITY ENGINEER TO RECORD THIS PLAT.

ACKNOWLEDGEMENT (CORPORATE)

BY: *[Signature]*
 TITLE: *[Title]*
 FOR: *[Company Name]*

TRaverse Mountain Flat 'A'

A PLANNED COMMUNITY DEVELOPMENT LOCATED IN LEHI CITY, UTAH COUNTY, UTAH, LIVING IN TOWNSHIP 4 SOUTH, RANGE 1 EAST, SALT LAKE BASIN AND MERIDIAN.

BOUNDARY DESCRIPTION

A Subdivision Map was filed in Section 25, Township 4 South, Range 1 East and Section 30, 31, and 32, T4S, R1E, W6E, on the 15th day of March, 2005, in the Office of the County Clerk, Utah County, Utah. The plat is subject to the provisions of the Utah Subdivision Map Act, Chapter 2, Title 66, Utah Code, and the provisions of the Utah Subdivision Map Act, Chapter 2, Title 66, Utah Code, and the provisions of the Utah Subdivision Map Act, Chapter 2, Title 66, Utah Code.

LEGEND

- BRASS CAP MONUMENT TO BE SET
- 5" R" REBAR AND CAP TO BE SET
- SECTION LINES
- SUBDIVISION BOUNDARY
- STREET CENTER LINE
- (R) RECORD

NOTE:

1. REMAINING CANAL R.O.W. IS NOT A PART OF THE PLAT DEDICATION
2. ACCESS ALONG SR-92 IS LIMITED AS DEFINED IN THE ACCESS AGREEMENT BETWEEN THE OWNER, THE CITY OF LEHI, AND UDOT
3. ALL FRONT LOT CORNERS TO HAVE LEAD MARKERS TAG SET ON TOP OF CURB ON THE EXPANSION ON EACH LOT LINE.
4. TRAVERSE MOUNTAIN BLVD. EXTENSION TO STATE ROAD 92 TO BE INCLUDED IN FUTURE PHASE.

PLANNING COMMISSION APPROVAL

APPROVED BY THE PLANNING COMMISSION OF LEHI CITY, UTAH COUNTY, UTAH, ON MAY 12, 2005.

ACCEPTANCE BY LEGISLATIVE BODY

THE CITY OF LEHI HAS REVIEWED AND APPROVED THIS PLAT AND THE STREETS, EASEMENTS AND OTHER FEATURES THEREON AND HAS ORDERED THE CITY ENGINEER TO RECORD THIS PLAT.

ACKNOWLEDGEMENT (CORPORATE)

BY: *[Signature]*
 TITLE: *[Title]*
 FOR: *[Company Name]*

TRaverse Mountain Flat 'A'

A PLANNED COMMUNITY DEVELOPMENT LOCATED IN LEHI CITY, UTAH COUNTY, UTAH, LIVING IN TOWNSHIP 4 SOUTH, RANGE 1 EAST, SALT LAKE BASIN AND MERIDIAN.

BOUNDARY DESCRIPTION

A Subdivision Map was filed in Section 25, Township 4 South, Range 1 East and Section 30, 31, and 32, T4S, R1E, W6E, on the 15th day of March, 2005, in the Office of the County Clerk, Utah County, Utah. The plat is subject to the provisions of the Utah Subdivision Map Act, Chapter 2, Title 66, Utah Code, and the provisions of the Utah Subdivision Map Act, Chapter 2, Title 66, Utah Code, and the provisions of the Utah Subdivision Map Act, Chapter 2, Title 66, Utah Code.

LEGEND

- BRASS CAP MONUMENT TO BE SET
- 5" R" REBAR AND CAP TO BE SET
- SECTION LINES
- SUBDIVISION BOUNDARY
- STREET CENTER LINE
- (R) RECORD

NOTE:

1. REMAINING CANAL R.O.W. IS NOT A PART OF THE PLAT DEDICATION
2. ACCESS ALONG SR-92 IS LIMITED AS DEFINED IN THE ACCESS AGREEMENT BETWEEN THE OWNER, THE CITY OF LEHI, AND UDOT
3. ALL FRONT LOT CORNERS TO HAVE LEAD MARKERS TAG SET ON TOP OF CURB ON THE EXPANSION ON EACH LOT LINE.
4. TRAVERSE MOUNTAIN BLVD. EXTENSION TO STATE ROAD 92 TO BE INCLUDED IN FUTURE PHASE.

PLANNING COMMISSION APPROVAL

APPROVED BY THE PLANNING COMMISSION OF LEHI CITY, UTAH COUNTY, UTAH, ON MAY 12, 2005.

ACCEPTANCE BY LEGISLATIVE BODY

THE CITY OF LEHI HAS REVIEWED AND APPROVED THIS PLAT AND THE STREETS, EASEMENTS AND OTHER FEATURES THEREON AND HAS ORDERED THE CITY ENGINEER TO RECORD THIS PLAT.

ACKNOWLEDGEMENT (CORPORATE)

BY: *[Signature]*
 TITLE: *[Title]*
 FOR: *[Company Name]*

TRaverse Mountain Flat 'A'

A PLANNED COMMUNITY DEVELOPMENT LOCATED IN LEHI CITY, UTAH COUNTY, UTAH, LIVING IN TOWNSHIP 4 SOUTH, RANGE 1 EAST, SALT LAKE BASIN AND MERIDIAN.

BOUNDARY DESCRIPTION

A Subdivision Map was filed in Section 25, Township 4 South, Range 1 East and Section 30, 31, and 32, T4S, R1E, W6E, on the 15th day of March, 2005, in the Office of the County Clerk, Utah County, Utah. The plat is subject to the provisions of the Utah Subdivision Map Act, Chapter 2, Title 66, Utah Code, and the provisions of the Utah Subdivision Map Act, Chapter 2, Title 66, Utah Code, and the provisions of the Utah Subdivision Map Act, Chapter 2, Title 66, Utah Code.

LEGEND

- BRASS CAP MONUMENT TO BE SET
- 5" R" REBAR AND CAP TO BE SET
- SECTION LINES
- SUBDIVISION BOUNDARY
- STREET CENTER LINE
- (R) RECORD

NOTE:

1. REMAINING CANAL R.O.W. IS NOT A PART OF THE PLAT DEDICATION
2. ACCESS ALONG SR-92 IS LIMITED AS DEFINED IN THE ACCESS AGREEMENT BETWEEN THE OWNER, THE CITY OF LEHI, AND UDOT
3. ALL FRONT LOT CORNERS TO HAVE LEAD MARKERS TAG SET ON TOP OF CURB ON THE EXPANSION ON EACH LOT LINE.
4. TRAVERSE MOUNTAIN BLVD. EXTENSION TO STATE ROAD 92 TO BE INCLUDED IN FUTURE PHASE.

PLANNING COMMISSION APPROVAL

APPROVED BY THE PLANNING COMMISSION OF LEHI CITY, UTAH COUNTY, UTAH, ON MAY 12, 2005.

ACCEPTANCE BY LEGISLATIVE BODY

THE CITY OF LEHI HAS REVIEWED AND APPROVED THIS PLAT AND THE STREETS, EASEMENTS AND OTHER FEATURES THEREON AND HAS ORDERED THE CITY ENGINEER TO RECORD THIS PLAT.

ACKNOWLEDGEMENT (CORPORATE)

BY: *[Signature]*
 TITLE: *[Title]*
 FOR: *[Company Name]*

TRaverse Mountain Flat 'A'

A PLANNED COMMUNITY DEVELOPMENT LOCATED IN LEHI CITY, UTAH COUNTY, UTAH, LIVING IN TOWNSHIP 4 SOUTH, RANGE 1 EAST, SALT LAKE BASIN AND MERIDIAN.

BOUNDARY DESCRIPTION

A Subdivision Map was filed in Section 25, Township 4 South, Range 1 East and Section 30, 31, and 32, T4S, R1E, W6E, on the 15th day of March, 2005, in the Office of the County Clerk, Utah County, Utah. The plat is subject to the provisions of the Utah Subdivision Map Act, Chapter 2, Title 66, Utah Code, and the provisions of the Utah Subdivision Map Act, Chapter 2, Title 66, Utah Code, and the provisions of the Utah Subdivision Map Act, Chapter 2, Title 66, Utah Code.

LEGEND

- BRASS CAP MONUMENT TO BE SET
- 5" R" REBAR AND CAP TO BE SET
- SECTION LINES
- SUBDIVISION BOUNDARY
- STREET CENTER LINE
- (R) RECORD

NOTE:

1. REMAINING CANAL R.O.W. IS NOT A PART OF THE PLAT DEDICATION
2. ACCESS ALONG SR-92 IS LIMITED AS DEFINED IN THE ACCESS AGREEMENT BETWEEN THE OWNER, THE CITY OF LEHI, AND UDOT
3. ALL FRONT LOT CORNERS TO HAVE LEAD MARKERS TAG SET ON TOP OF CURB ON THE EXPANSION ON EACH LOT LINE.
4. TRAVERSE MOUNTAIN BLVD. EXTENSION TO STATE ROAD 92 TO BE INCLUDED IN FUTURE PHASE.

PLANNING COMMISSION APPROVAL

APPROVED BY THE PLANNING COMMISSION OF LEHI CITY, UTAH COUNTY, UTAH, ON MAY 12, 2005.

ACCEPTANCE BY LEGISLATIVE BODY

THE CITY OF LEHI HAS REVIEWED AND APPROVED THIS PLAT AND THE STREETS, EASEMENTS AND OTHER FEATURES THEREON AND HAS ORDERED THE CITY ENGINEER TO RECORD THIS PLAT.

ACKNOWLEDGEMENT (CORPORATE)

BY: *[Signature]*
 TITLE: *[Title]*
 FOR: *[Company Name]*

TRaverse Mountain Flat 'A'

A PLANNED COMMUNITY DEVELOPMENT LOCATED IN LEHI CITY, UTAH COUNTY, UTAH, LIVING IN TOWNSHIP 4 SOUTH, RANGE 1 EAST, SALT LAKE BASIN AND MERIDIAN.

BOUNDARY DESCRIPTION

A Subdivision Map was filed in Section 25, Township 4 South, Range 1 East and Section 30, 31, and 32, T4S, R1E, W6E, on the 15th day of March, 2005, in the Office of the County Clerk, Utah County, Utah. The plat is subject to the provisions of the Utah Subdivision Map Act, Chapter 2, Title 66, Utah Code, and the provisions of the Utah Subdivision Map Act, Chapter 2, Title 66, Utah Code, and the provisions of the Utah Subdivision Map Act, Chapter 2, Title 66, Utah Code.

LEGEND

- BRASS CAP MONUMENT TO BE SET
- 5" R" REBAR AND CAP TO BE SET
- SECTION LINES
- SUBDIVISION BOUNDARY
- STREET CENTER LINE
- (R) RECORD

NOTE:

1. REMAINING CANAL R.O.W. IS NOT A PART OF THE PLAT DEDICATION
2. ACCESS ALONG SR-92 IS LIMITED AS DEFINED IN THE ACCESS AGREEMENT BETWEEN THE OWNER, THE CITY OF LEHI, AND UDOT
3. ALL FRONT LOT CORNERS TO HAVE LEAD MARKERS TAG SET ON TOP OF CURB ON THE EXPANSION ON EACH LOT LINE.
4. TRAVERSE MOUNTAIN BLVD. EXTENSION TO STATE ROAD 92 TO BE INCLUDED IN FUTURE PHASE.

PLANNING COMMISSION APPROVAL

APPROVED BY THE PLANNING COMMISSION OF LEHI CITY, UTAH COUNTY, UTAH, ON MAY 12, 2005.

ACCEPTANCE BY LEGISLATIVE BODY

THE CITY OF LEHI HAS REVIEWED AND APPROVED THIS PLAT AND THE STREETS, EASEMENTS AND OTHER FEATURES THEREON AND HAS ORDERED THE CITY ENGINEER TO RECORD THIS PLAT.

ACKNOWLEDGEMENT (CORPORATE)

BY: *[Signature]*
 TITLE: *[Title]*
 FOR: *[Company Name]*

9220-105 (sheet 2 of 3)

