

1987

188J

188J

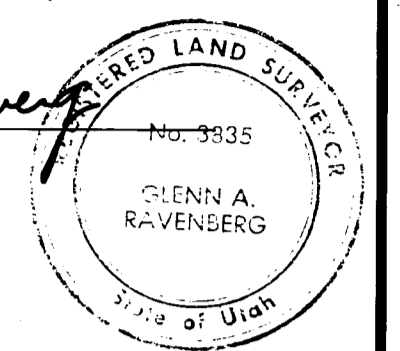
CLIFFORD ESTATES NO. 1

PART OF THE S.E. 1/4 OF SEC. 27, T5N, R2W, SLB&M, U.S. SURVEY
CLINTON CITY, DAVIS COUNTY, UTAH
NOV. 1990

SURVEYORS CERTIFICATE

I, GLENN RAVENBERG, a Registered Land Surveyor in the State of Utah, do hereby certify that this plat of CLIFFORD ESTATES NO. 1, located in CLINTON City, DAVIS County, Utah, has been correctly drawn to the designated scale and is a true and correct representation of the following description of lands included in said subdivision based on data compiled from records on file in the DAVIS County Recorder's Office and a survey made on the ground.

Signed this 4th day of JAN, 1991
3835
License No. Glenn Ravenberg
Signature



OWNERS DEDICATION

We the undersigned owners of the hereon described tract of land hereby set apart and subdivide same into lots and streets as shown on this plat and name said tract CLIFFORD ESTATES NO. 1 and hereby dedicate, grant and convey to CLINTON City, DAVIS County, Utah, all those portions of said tract of land designated as streets, the same to be used as public thoroughfares forever, and also dedicate to CLINTON City, those certain strips shown as easements for Public Utilities and drainage purposes as shown hereon, the same to be used for the installation, maintenance and operation of public utility service lines and drainage as may be authorized by CLINTON City.

Signed this 4 day of JAN, 1991
Highley & Highley Const. Inc.
Mark L. Highley V. Pres.

ACKNOWLEDGEMENT

State of Utah }
County of }
On this 14th day of February, 1991, personally appeared before me the undersigned Notary Public, the signers of the above Owners Dedication, in number who duly acknowledged to me that they signed it freely and voluntarily and for the purposes therein mentioned.

Jennette P. Richard
Notary Public
Commission Expires

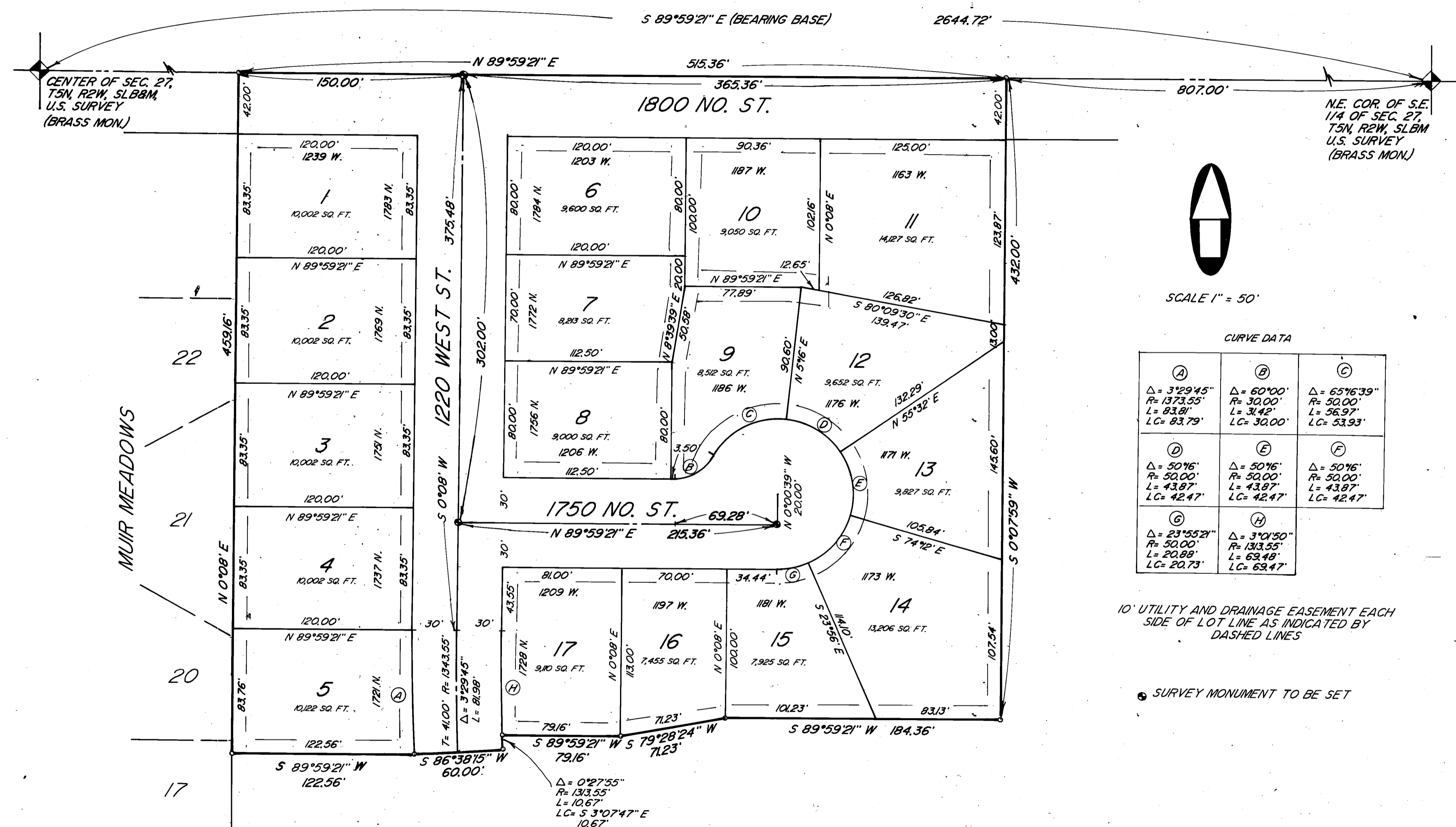
State of Utah } DAVIS
County of }
On this 4 day of JAN, 1991, personally appeared before me MARK L. HIGHLEY who being by me duly sworn, did say that HE is VICE PRESIDENT of HIGLEY & HIGLEY CONST. INC. and that said instrument was signed on behalf of said corporation by a resolution of its Board of Directors and acknowledged to me that said Corporation executed the same.

9-21-92
Commission Expires
Johnnie McKain
Notary Public
LADONIA MCKAIN
Notary Public
STATE OF UTAH
My Comm. Exp. Sep. 21, 1991

BOUNDARY DESCRIPTION

A PART OF THE SOUTHEAST QUARTER OF SECTION 27, T5N, R2W, SLB&M, U.S. SURVEY, BEGINNING AT A POINT WHICH IS SOUTH 89°59'21" WEST 807.00 FT. ALONG THE 1/4 SECTION LINE FROM THE NORTHEAST CORNER OF SAID SOUTHEAST QUARTER SECTION AND RUNNING THENCE SOUTH 0°07'59" WEST 432.00 FT., THENCE SOUTH 89°59'21" WEST 184.36 FT., THENCE SOUTH 79°28'24" WEST 71.23 FT., THENCE SOUTH 89°59'21" WEST 79.16 FT., THENCE SOUTHERLY ALONG THE ARC OF A 1313.55 FT. RADIUS CURVE TO THE LEFT 10.67 FT. (L.C. BEARS SOUTH 3°07'47" EAST 10.67 FT.), THENCE SOUTH 86°38'15" WEST 60.00 FT., THENCE SOUTH 89°59'21" WEST 122.56 FT. TO THE EAST LINE OF MUIR MEADOWS, THENCE NORTH 0°08' EAST 459.16 FT., THENCE NORTH 89°59'21" EAST 515.36 FT. TO THE POINT OF BEGINNING.

CONTAINS 5.256 ACRES



CURVE DATA

(A) Δ = 3°29'45" R = 1373.55' L = 83.81' LC = 83.79'	(B) Δ = 60°00" R = 30.00' L = 31.42' LC = 30.00'	(C) Δ = 65°16'39" R = 50.00' L = 56.97' LC = 53.93'
(D) Δ = 50°16' R = 50.00' L = 43.87' LC = 42.47'	(E) Δ = 50°16' R = 50.00' L = 43.87' LC = 42.47'	(F) Δ = 50°16' R = 50.00' L = 43.87' LC = 42.47'
(G) Δ = 23°55'21" R = 50.00' L = 20.89' LC = 20.73'	(H) Δ = 3°01'50" R = 1313.55' L = 63.48' LC = 63.47'	

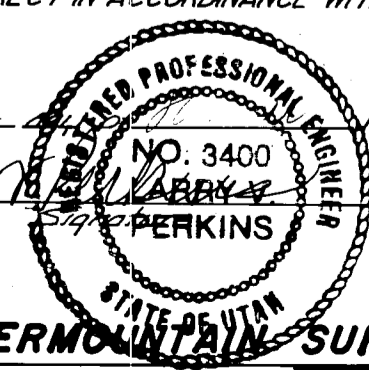
10' UTILITY AND DRAINAGE EASEMENT EACH SIDE OF LOT LINE AS INDICATED BY DASHED LINES

● SURVEY MONUMENT TO BE SET

CITY ENGINEER

I HEREBY CERTIFY THAT THIS OFFICE HAS EXAMINED THIS PLAT AND FIND THAT IT IS CORRECT IN ACCORDANCE WITH INFORMATION ON FILE IN THIS OFFICE.

Signed this 14th day of February, 1991
Angela Perkins
Professional Engineer
No. 3400
Perkins



INTERMOUNTAIN SURVEYING

CITY APPROVAL

This is to certify that this plat and dedication of this plot were duly approved and accepted by the City Council of CLINTON City, Utah on this 11th day of December, 1990

Attest Mary K. Clark Steve E. Walker
Title City Recorder Mayor

CITY PLANNING COMMISSION

Approved by the Planning Commission of CLINTON City on this 4th day of December, 1990

[Signature]
Signature

COUNTY HEALTH DEPT.

Approved by the Health Department of DAVIS County on this 4th day of December, 1991

[Signature]
Signature

COUNTY RECORDER

Entry No. 917105 Fee Paid 28.50 Filed for record and recorded this 4 day of Feb, 1991, at 2:01 PM in Book 1394 Page 855 of the Official Records

Carol Ann Page
Deputy
County Recorder

188P1

188P1

14-158
14-004-0025
\$28.50